

RESEARCH ARTICLE

Open Access



Longitudinal study of electrical, functional and structural remodelling in an equine model of atrial fibrillation

Eva Zander Hesselkilde^{1†}, Helena Carstensen^{1†}, Mette Flethøj¹, Merle Fenner¹, Ditte Dybvald Kruse², Stefan M. Sattler^{3,4}, Jacob Tfelt-Hansen^{3,5}, Steen Pehrson³, Thomas Hartig Braunstein², Jonas Carlson⁶, Pyotr G. Platonov⁶, Thomas Jespersen² and Rikke Buhl^{1*} 

Abstract

Background: Large animal models are important in atrial fibrillation (AF) research, as they can be used to study the pathophysiology of AF and new therapeutic approaches. Unlike other animal models, horses spontaneously develop AF and could therefore serve as a *bona fide* model in AF research. We therefore aimed to study the electrical, functional and structural remodelling caused by chronic AF in a horse model.

Method: Nine female horses were included in the study, with six horses tachypaced into self-sustained AF and three that served as a time-matched sham-operated control group. Acceleration in atrial fibrillatory rate (AFR), changes in electrocardiographic and echocardiographic variables and response to medical treatment (flecainide 2 mg/kg) were recorded over a period of 2 months. At the end of the study, changes in ion channel expression and fibrosis were measured and compared between the two groups.

Results: AFR increased from 299 ± 33 fibrillations per minute (fpm) to 376 ± 12 fpm ($p < 0.05$) and atrial function (active left atrial fractional area change) decreased significantly during the study ($p < 0.05$). No changes were observed in heart rate or ventricular function. The AF group had more atrial fibrosis compared to the control group ($p < 0.05$). No differences in ion channel expression were observed.

Conclusion: Horses with induced AF show signs of atrial remodelling that are similar to humans and other animal models.

Keywords: Animal model, Atrial fibrillation, Atrial fibrillatory rate, Chronic atrial fibrillation, Equine, Flecainide, Horse

Background

Atrial fibrillation (AF) remains the most important arrhythmia in clinical practice, with a high morbidity, mortality and economic burden on society (1). AF alters the electrophysiology, the structure and the contractility of the atrium – a process commonly known as atrial remodelling. Atrial remodelling further promotes AF (2) and impedes cardioversion to sinus rhythm (SR). Animal models complement clinical studies by investigating the underlying mechanisms leading to AF and its

maintenance. Furthermore, a good large animal model could also indicate whether new antiarrhythmic drugs will be useful in the clinic and report on potential side effects. Models for AF research span *ex vivo* cellular studies to larger animal models, yet the preference seems to have shifted over the years toward: 1) large animal models, as the AF mechanisms are highly complex and require a proper substrate and 2) chronic AF models, as AF develops over time and these changes are crucial for optimal treatment (3).

Horses fulfil several requirements of a *bona fide* model for AF studies; horses are large animals that are easy to handle and many procedures can be performed without sedation or anaesthesia. They have a high AF inducibility (4, 5), and most importantly, spontaneously develop AF

* Correspondence: rib@sund.ku.dk

†Eva Zander Hesselkilde and Helena Carstensen contributed equally to this work.

¹Department of Veterinary Clinical Sciences, Faculty of Health and Medical Sciences, University of Copenhagen, Højbakkegaard Allé 5, 2630 Taastrup, Denmark

Full list of author information is available at the end of the article



both with and without the presence of structural heart disease. Furthermore, horses with chronic AF do not develop heart failure, which facilitates long-term studies (6). Horses have previously been suggested as an animal model for AF studies and several studies have investigated the short term effect of induced AF in horses (15 min – 7 days) (4, 5, 7–9) while only a few studies on long-term AF exist (10, 11).

In order to establish the horse as an animal model, it is important to document the effect of AF on electrical, structural and contractile remodelling over time. The aim of the study was therefore to develop a long-term (55 days) horse model with tachypacing-induced AF. Electrocardiography (ECG), echocardiography, histology and molecular expression studies were performed in order to evaluate temporal changes. We hypothesized that horses with induced AF would develop electrical, functional and structural remodelling, observed as changes in atrial fibrillatory rate (AFR), reduced atrial function and changes in ion channel expression and atrial fibrosis, respectively.

Methods

Nine female Standardbred horses aged 4–17 years (10 ± 5 years), with a body weight between 408 and 572 kg (474 ± 47 kg) were included in the study. The horses were purchased as experimental animals from private trainers. Six horses were electrically stimulated into AF (the AF group) and three served as a time-matched, sham-operated control group. All animals were deemed healthy based on clinical examination including blood analysis, and no abnormalities were found from ECG or echocardiographic examinations at the time of inclusion.

Pacemaker implantation

Pacemaker implantation in horses has previously been described (12). In this study dual-chamber pacemakers¹ were implanted in nine horses for AF induction (AF group) and electrophysiological studies (AF and control group). The pacemakers were implanted in sedated (0.01 mg/kg detomidine, 0.01 mg/kg butorphanol and constant rate infusion of 1.0 mg/ml xylazine) standing horses. The pectoral region was surgically prepared and locally anesthetised before a 6–8 cm incision was made. Through the cephalic vein two leads² were advanced to the heart and both were fixated in the right atrium. Pacing ability, threshold, lead impedance and absence of phrenic nerve stimulation were tested before and after fixation. The leads were secured in the cephalic vein and connected to the pacemaker which was placed in a subcutaneous pocket distal to the incision. The incision was

sutured in three layers and the horses were treated with antibiotics and non-steroidal anti-inflammatory drugs. The surgery-time was between 60 and 150 min.

AF induction and study design

The study design is depicted in Fig. 1. AF was induced by high-rate pacing from the pacemaker, pacing from both leads at a rate of 170 min^{-1} (with a delay between the leads of 175 ms and 2.5 V @ 0.4 ms output) which resulted in an atrial pacing rate of 340 min^{-1} . AF was initiated by burst-pacing operated manually through the pacemaker, which was continued daily (1–8 h per horse) until sustained AF was achieved. During AF (in the period of AF induction), the pacemaker was in an inhibitory mode to automatically start pacing if the atrial rate fell below 170 min^{-1} , thus ensuring a minimum atrial rate of 170 min^{-1} at all times. The horses were constantly monitored with ECG during AF induction, except for a few hours per day, when they were allowed to walk freely in the paddock. The pacemaker was turned off after the horses had been in self-sustained AF for more than 24 h.

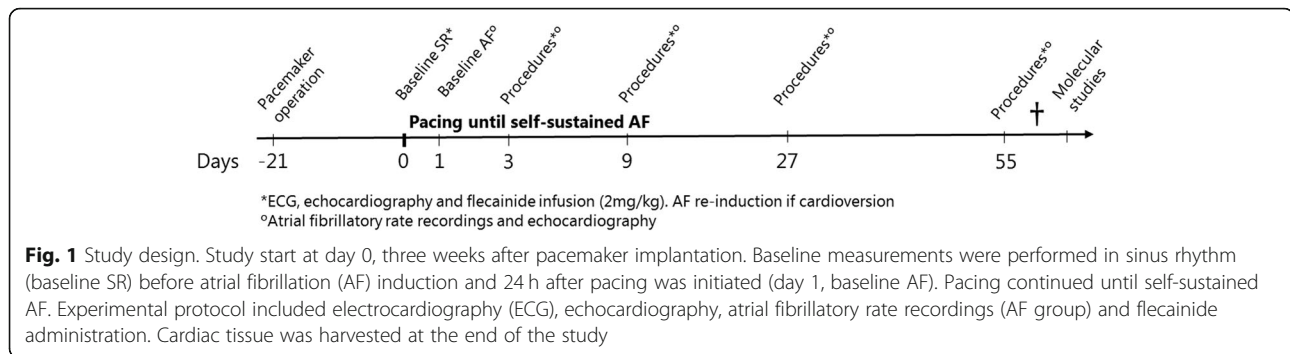
Total AF durations were calculated from the surface ECG, and all AF episodes of more than 10 min were included. Episodes shorter than 10 min, burst-pacing and pacemaker activity were not included. If the horses spontaneously cardioverted to SR in the paddock (when not equipped with an ECG) or at night (after dislodging the electrodes), these periods were registered as uncertain AF and were not included in the total AF duration.

To investigate the effect of both short- and long-term AF on atrial remodelling, the procedures described below were performed 3, 9, 27 and 55 days (procedure days) after pacing was initiated. Baseline measurements were obtained on day 0 before pacing was initiated (SR measurements) and on day 1 (AF measurements). If the horses were not in AF on the procedure days, the pacemaker was turned off and the procedures were performed in SR. To study the effect of remodelling on pharmacological cardioversion, intravenous flecainide³ (2 mg/kg, rate 0.2 mg/kg/min) was administered on each of the procedure days. Flecainide was chosen for cardioversion as it previously has been studied in horses, it is used in the clinic to treat paroxysmal AF and has a short half-life (7). The pacemaker was turned off at least 30 min before flecainide infusion began to avoid that spontaneous cardioversion was attributed to the effect of flecainide. A detailed description of the effects of flecainide can be found elsewhere (13). At the end of each procedure day, AF was re-induced following the same induction protocol as described above.

¹Assurity™ MRI 2272, St. Jude Medical, St. Paul, MN

²Tendril STS Pacing Leads 100 cm, St. Jude Medical, St. Paul, MN

³Tambacor™, Meda A/S, Allerød, Denmark



Electrocardiographic parameters

During AF induction and throughout each procedure day, the horses were equipped with a three-lead Holter ECG⁴ with the electrodes placed as a modified base-apex ECG (7). The ECGs from each procedure day were manually analysed offline by a single observer; QRS duration and QT interval were measured and averaged over five consecutive beats and HR was averaged over 10 beats. QT measurements were adjusted beat-to-beat according to species specific HR (QTc), as previously described (14).

Atrial fibrillatory rate

Atrial fibrillatory rate (AFR) is a non-invasive measurement of atrial remodelling, and is inversely proportional to atrial fibrillation cycle length (AFCL) (15). AFR was calculated from a 15-min surface ECG recording of AF. ECG analysis including QRST cancellation and AFR calculation was performed using the Cardiolund AFR Tracker software⁵ (16).

Functional studies

Echocardiographic examinations were performed to quantify left atrial and ventricular size and function. All echocardiographic examinations were performed using a portable Vivid I ultrasound system with a 3.1 MHz phased array transducer⁶ at rest and without sedation, as previously described (17). Echocardiographic examinations were performed before pacemaker implantation, at baseline and on all procedures days (before, days 0, 1, 3, 9, 27 and 55) in both SR and AF when possible. Horses in the AF group were examined in AF before administration of flecainide, and an additional examination was performed if they cardioverted to SR after flecainide treatment. Assessment of ventricular size and function was performed from the examinations obtained in AF while assessment of atrial size and function was performed from the SR examinations as the left atrial

fractional area change measurements only can be obtained in SR. Horses in the control group were examined before flecainide administration. Colour flow Doppler was used to assess valvular competences. Analysis was performed offline⁷ by a single observer and two-dimensional echocardiography (2D) and anatomical M-mode (AMM) were used to assess the left atrial (LA) and left ventricular (LV) size and function. Values are reported as the average of three non-consecutive cardiac cycles. Ventricular measurements are described in the Additional file 1. Two-dimensional echocardiographic variables for the assessment of LA size and function were measured as follows: left atrial area at mitral valve closure (LAA_{min}), left atrial area at onset of the P wave (LAA_a), left atrial area at mitral valve opening (LAA_{max}), left atrial diameter at mitral valve opening (LAD), passive left atrial fractional area change (LA-Fac_{passive} = (LAA_{max} - LAA_a) / LAA_{max}), active left atrial fractional area change (LA-Fac_{active} = (LAA_a - LAA_{min}) / LAA_a) and total left atrial fractional area change (LA-Fac_{total} = LAA_{max} - LAA_{min}) / LAA_{max}) (18). Valvular insufficiency was classified as: none, clinically insignificant, mild, moderate or severe (19).

Structural studies

The horses were euthanized between 58 and 63 days after AF initiation by bolt-stunning, and cardiac tissue was harvested for microscopy and quantitative polymerase chain reaction (qPCR, described in Additional file 1: Table S1) from the left atrial appendage (LAA), right atrial appendage (RAA) and right ventricle (RV). Biopsies for microscopy were sliced (4 µm) and stained with Picro-Sirius Red. Detailed information about the preparation of the tissue can be found in the Additional file 1. Full biopsy sections were scanned, using a ZEISS Axioscan slide scanner equipped with a 20x, 0.8 NA objective.⁸ Scanned images were analysed with the software ZEN 2.3 Blue edition⁹ in combination with the extension

⁴Televet 100, Telemetric ECG, Kruuse A/S, Langeskov, Denmark

⁵Cardiolund AFR Tracker software, cardiolund.com, Lund Sweden

⁶Vivid I, 3S Phased Array transducer, GE Healthcare, Horten, Norway

⁷EchoPAC PC, GE Healthcare, Horten, Norway

⁸Axio Scan Z1 slide scanner, Zeiss, Oberkochen, Germany

⁹ZEN 2.3 Blue edition, Zeiss, Oberkochen, Germany

software ZEN Intellesis,¹⁰ which was used for image segmentation to distinguish between background, muscle and collagen. We applied two approaches for collagen assessment. First, the full sections including large vessels, epi- and endocardial tissue were analysed. Second, quantification of interstitial fibrosis, where three areas from each section containing either high amounts (interstitial_{max}) or low amounts (interstitial_{min}) of collagen between the cardiomyocytes were chosen, by eye and blindfolded to the observer, and analysed as the average of interstitial_{min} and interstitial_{max}.

Data analysis

Investigators were blinded to the group allocation and procedure day throughout all analyses. Data analyses were performed using Microsoft Excel¹¹ and GraphPad Prism.¹² Changes in AFR and other ECG parameters between baseline and day 55, were assessed using student's t-tests where paired analysis were performed when appropriate. Difference in fibrotic area and ion channels expression (measured with qPCR) between AF and control were also assessed using student's t-test. The qPCR data were subsequently Bonferroni corrected. Echocardiographic data were compared to baseline measurement with a one-way ANOVA followed by Dunnett's post hoc test for multiple comparisons. Data are presented as mean \pm SD and $p \leq 0.05$ was considered significant.

Results

All horses completed the study period of 55 days. One control horse developed non-cardiac-related colic and could not participate on procedure day 3. After the study period (day 59), cardioversion was attempted in horse #1 with an additional dose of flecainide 10 min after the first dose. The horse developed ventricular fibrillation and was not included in the molecular studies.

AF induction

All horses were continuously paced into self-sustained AF until they no longer spontaneously cardioverted to SR. The pacing time required to achieve self-sustained AF varied among horses (18 ± 9.9 days, range 8–36 days). AF stability increased over time for all horses; at the beginning of AF induction, burst-pacing only resulted in short AF episodes, but as pacing continued, longer AF episodes occurred and eventually only a small number of burst-pacing sessions were needed for AF to become sustained (Fig. 2, panel C). The AF became less organized over time as it developed into more stable AF (Fig. 2, panel E and F). In contrast, no ECG changes were

observed in the control group between day 0 and day 55 (Fig. 2, panel A + B). Total AF duration ranged from 15 to 46 days (37 ± 11 days), and the AF burden for each horse is illustrated in Fig. 3. The total duration of unknown AF was on average 2.4 days per horse and was not included.

Electrical remodelling

ECG changes

There was a trend towards an increased HR in the AF group from day 0 (measured in SR) to day 55 when the horses were in AF (HR day 0: $42 \pm 13 \text{ min}^{-1}$, HR day 55: $64 \pm 20 \text{ min}^{-1}$, $p = 0.07$). No difference in HR was observed for the control group (HR day 0: $46 \pm 10.2 \text{ min}^{-1}$, day 55: $42 \pm 7 \text{ min}^{-1}$, $p < 0.05$). No changes in QRS or QTc duration were observed in any of the groups ($p < 0.05$). In the AF group, QRS duration was 103 ± 5 ms on day 0 and 100 ± 7 ms on day 55. In the control group, QRS duration was 93 ± 3 on day 0 and 92 ± 6 on day 55. Mean QTc duration was 442 ± 38 ms on day 0 and 441 ± 23 ms on day 55 for the AF group and 438 ± 1 ms on day 0 and 458 ± 10 ms on day 55 for the control group.

Atrial fibrillatory rate

On day 1 (24 h after pacing was initiated), AFR was 299 ± 33 fibrillations per minute (fpm; range 239–323 fpm). The AFR increased during the study (apart from day 3 when only two horses were in stable AF) and was significantly higher on day 55 compared to day 1 (mean AFR on day 55: 376 ± 12 fpm, range 362–394 fpm, $p < 0.01$, Fig. 4).

Ion channel expression

No significant changes in ion channel expression were found for any of the genes (SCNA5, CACNA1C, KCND3, KCNIP2, KCNA5, KCNH2, KCNQ1, KCNJ2, KCNJ3, KCNJ5 and KCNN1–3.) between the AF and control horses. Expression levels for each gene are presented in Additional file 1: Fig. S1.

Functional remodelling

Offline assessment of echocardiographic image and data quality led to the exclusion of ventricular measurement obtained in AMM for two horses from the AF group (on day 1 and 55), and ventricular measurement obtained in 2DE for 1 horses in the AF group at day 55 and for atrial images in one horse during AF at day 1.

From the echocardiographic examinations performed in SR after cardioversion with flecainide (AF group) we found that the left atrial area (LAA_{min}) significantly increased after day 9 ($p < 0.01$, Fig. 5) compared to baseline while no significant changes were observed for LAA_{max} or LAD. The LA-Fac_{active} significantly decreased after day 3 ($p < 0.01$, Fig. 5) while no significant changes

¹⁰ZEN Intellesis, 2017, Zeiss, Oberkochen, Germany

¹¹Microsoft, Redmont, 2016, USA

¹²GraphPad Software, San Diego, CA, USA

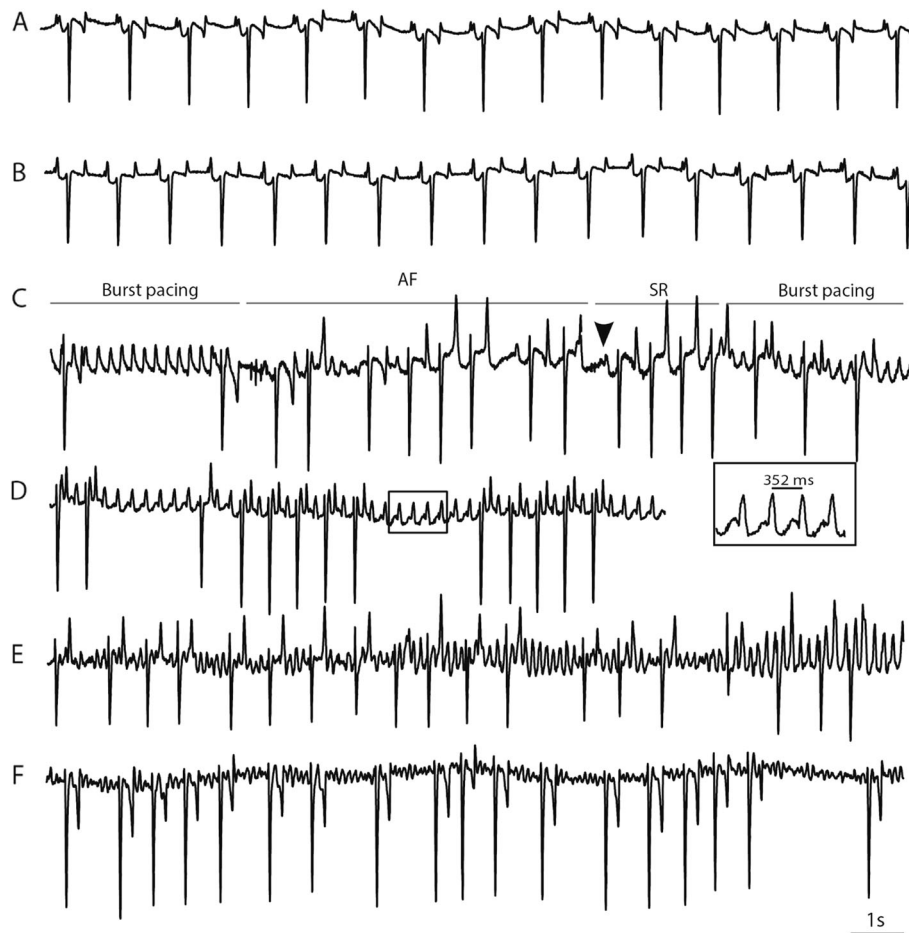


Fig. 2 ECG traces during the study. A: Control horse in SR at day 0 and at day 55 (B). C: Manual burst-pace at day 0 resulted in short AF episodes followed by SR. Arrow head indicate the first P wave after spontaneous cardioversion. D: Pacemaker driven atrial rhythm of 170 min^{-1} (352 ms) with intermittent AV block. E and F: One horse in AF at day 1 and day 55, respectively. Note the faster fibrillatory rate at day 55 (F). Paper speed 10 mm/s, gain 10 mm/mv

were observed for $\text{LA-Fac}_{\text{passive}}$ but a tendency for $\text{LA-Fac}_{\text{total}}$ was found at several time points and showed significant difference at day 27 ($p < 0.01$). No differences were observed between examinations performed before pacemaker implantation and at baseline (after pacemaker implantation, before induction of AF). Before cardioversion with flecainide the horses in the AF group had an echocardiographic examination while in AF. Data from these examinations revealed a significant enlargement of the LAA_{min} and LAA_{max} between baseline (AF baseline = day 1) and day 55 ($p < 0.01$). No changes in LAD or $\text{LA-Fac}_{\text{total}}$ were observed. Measurement of LAA_a , $\text{LA-Fac}_{\text{active}}$ and $\text{LA-Fac}_{\text{passive}}$ were not possible as no P wave was visible during AF. We observed no changes in either atrial size or function in the control group (Fig. 5 and Additional file 1: Table S2). Measurements of atrial size and function before the pacemaker was implanted, at baseline, during the AF episodes and

after cardioversion are illustrated in Additional file 1: Table S2.

Colour flow Doppler revealed a moderate tricuspid valve insufficiency in one horse at inclusion that did not progress during the study. Several horses had mild and clinically insignificant valve insufficiencies. None of the horses developed valvular insufficiencies beyond the “mild” category throughout the study.

To study ventricular remodelling and monitor signs of heart failure, LV size and function were in each group assessed during the study. No differences were observed in the AF or control groups during the study period ($p > 0.05$). Results are displayed in Additional file 1: Table S3–4.

Cardioversion to sinus rhythm

Results on cardioversion rates with flecainide have previously been published (13). Briefly, one horse was in stable AF on procedure day 3, and cardioverted 3 min

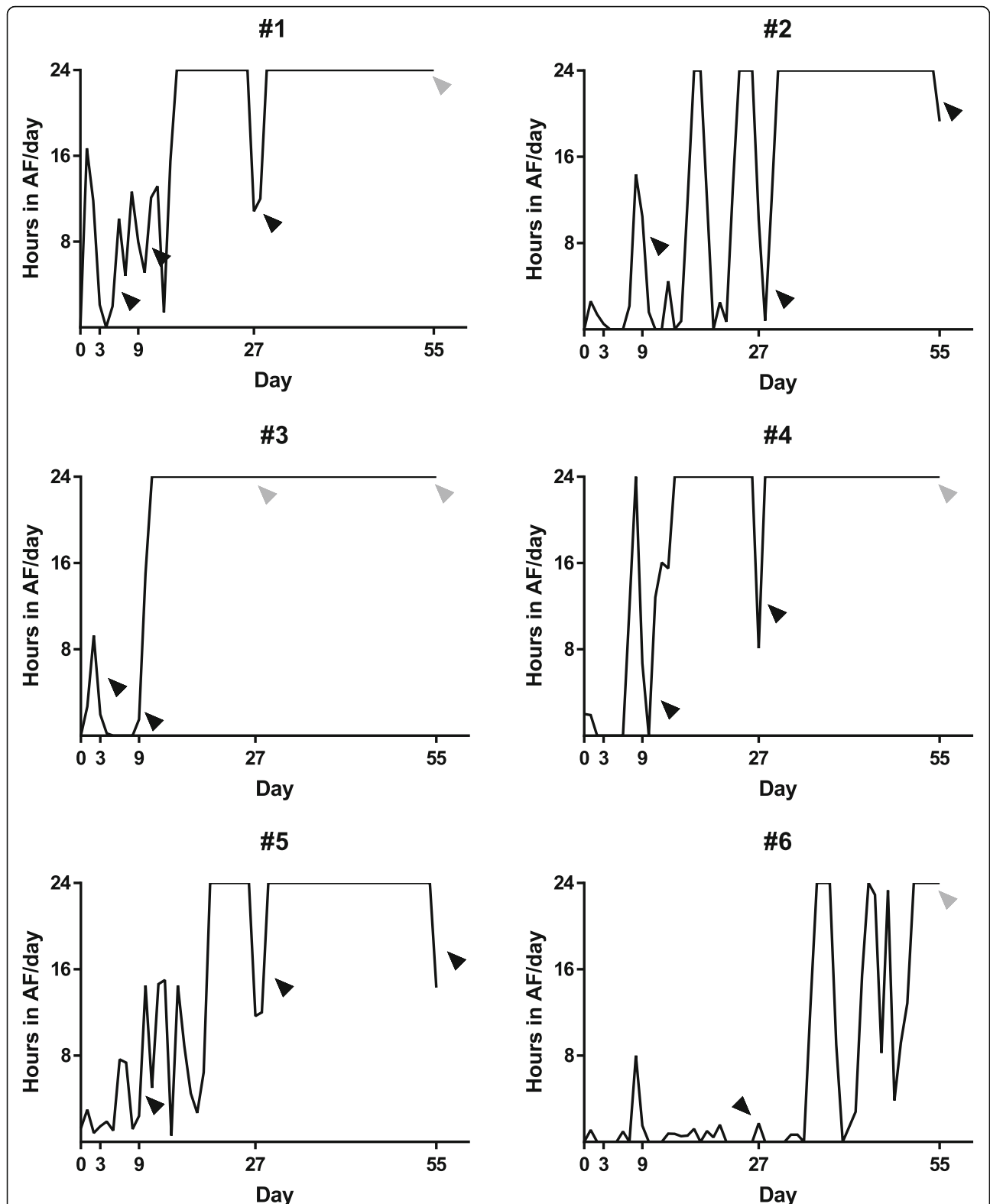
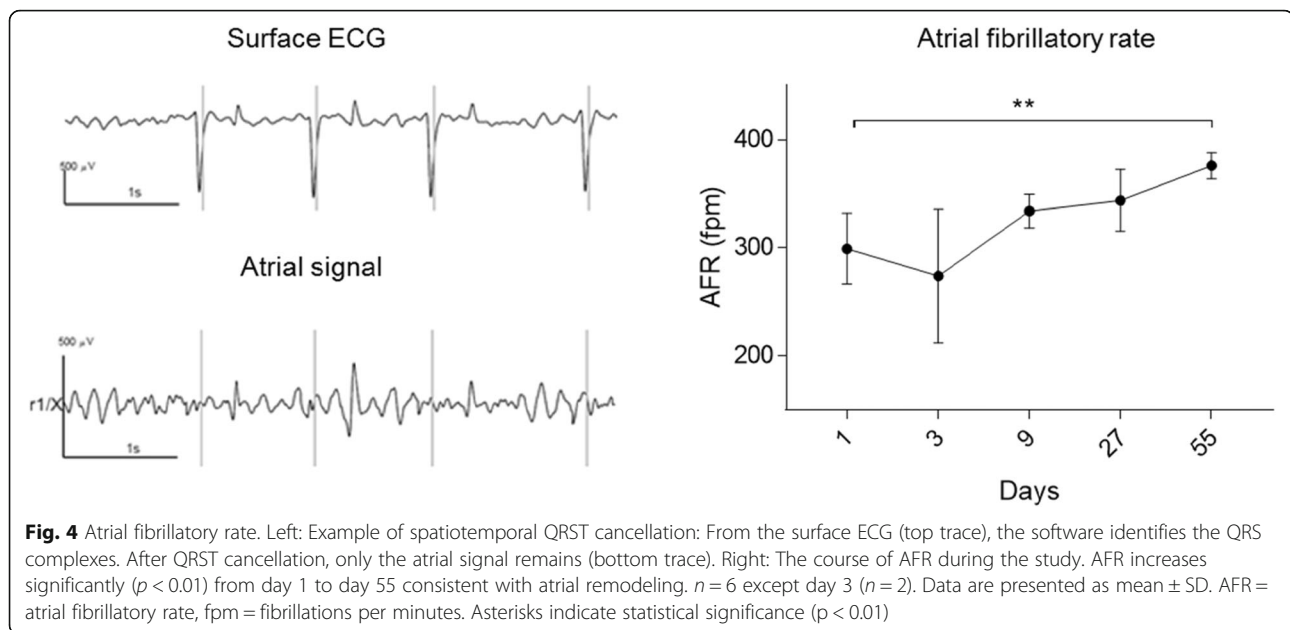


Fig. 3 AF burden. Total AF burden for individual horses. Black arrowheads indicate successful cardioversion to sinus rhythm after flecainide administration. Grey arrowheads indicate unsuccessful cardioversion after flecainide administration. Pacing, AF episodes < 10 min and unknown AF are not included



after flecainide infusion was initiated. On day 9, 5/5 horses cardioverted (6–12 min after flecainide infusion began), on day 27, 5/6 horses cardioverted (4–62 min after infusion began) and on day 55, 2/6 horses cardioverted (96 and 185 min after infusion began, Fig. 3). There was a correlation between the time from infusion start until cardioversion to SR and the cumulative duration of AF ($p < 0.001$, $R^2 = 0.80$) (13).

Structural remodelling

With the Picro-Sirius Red staining of connective tissue we found a significantly increased collagen deposition in the left atria in the AF group (compared to the control group) for both the full LAA sections ($p < 0.05$, Fig. 6A, C) and the analysis of interstitial fibrosis ($p < 0.05$, Fig. 6D, F). There were no significant differences found for the full RAA section ($p = 0.14$, Fig. 6B, C), although a tendency was seen in the analyses of interstitial fibrosis ($p = 0.06$, Fig. 6E, F). Quantification of collagen deposition of the RV sections (Fig. 6C) showed no differences between the two groups ($p = 0.97$).

Discussion

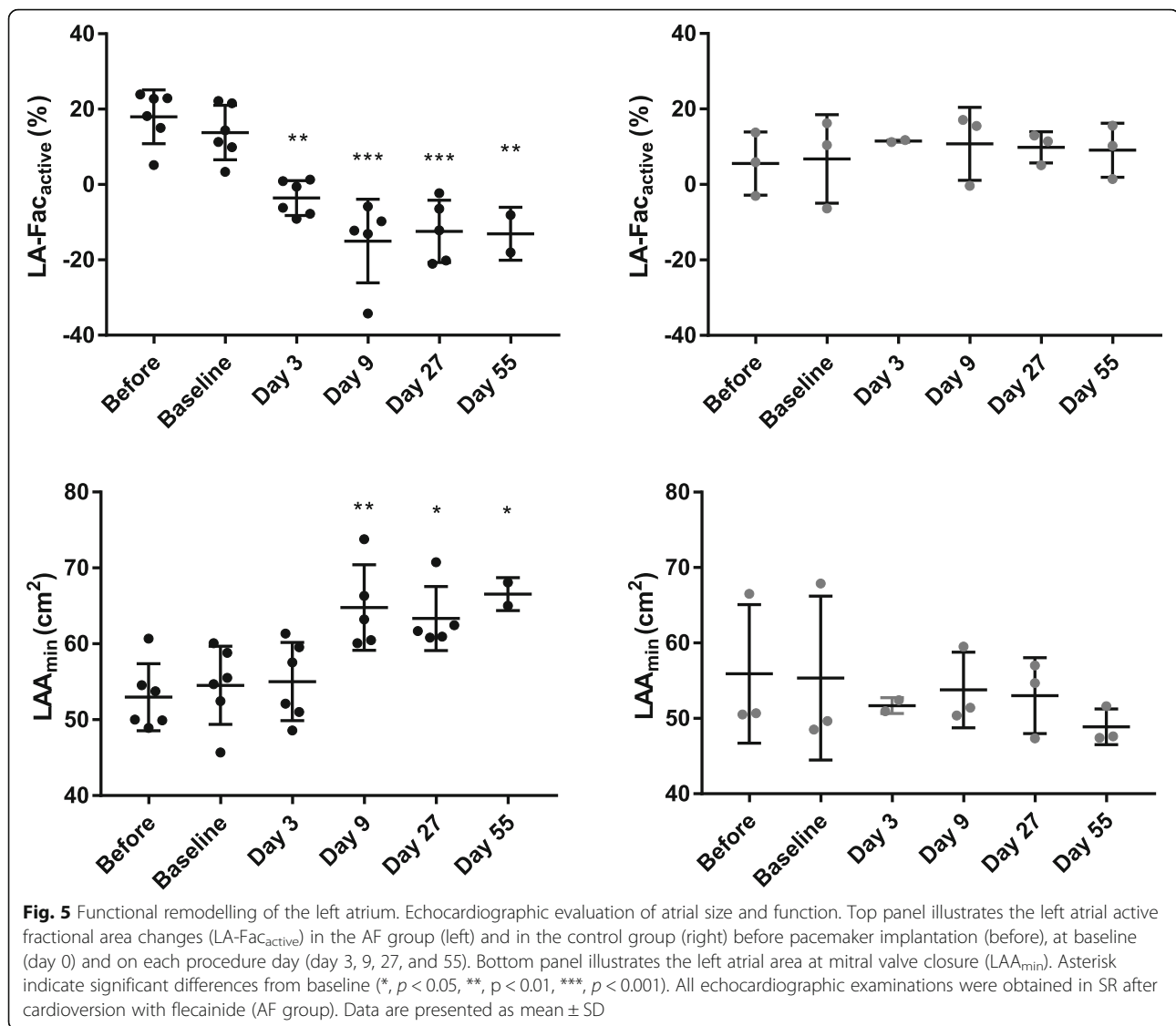
In this study, we have introduced a novel model of chronic AF. We found that horses can be tachypaced into to self-sustained AF and that AF promotes electrical, functional and structural remodelling. Horses spontaneously develop AF both with and without the presence of underlying cardiac disease, which is why we present the horse as a highly relevant animal model of human AF. In order to study changes from early AF to chronic AF, we included healthy horses, in which AF was induced by tachypacing.

AF induction

The pacemaker ensured a constant rate between 170 and 340 min⁻¹ in the atria, however this did not lead to sufficient capture nor the development of self-sustained AF. Burst-pacing was therefore introduced and combined with pacing from the pacemaker it proved feasible for inducing self-sustained AF in horses. Other animal studies (8, 20) have used neurostimulators to automatically burst-pace the atria which is desirable as it is less time-consuming for the operators and ensures a uniform and a most likely faster AF induction. The pacing-time required to achieve self-sustained AF varied among horses, suggesting a variation in AF vulnerability. Atrial pacing led to increased AF vulnerability and increased AF duration in all horses; this is the main feature of atrial remodelling where “AF begets AF” (2). One horse (#6) required a particularly long pacing-time, which could be attributed to its small size (408 kg), as AF is difficult to induce in small horses (11). Despite the prolonged period before persistent AF was induced in this horse, intensive pacing did seem to remodel the heart, as this horse could not be pharmacologically cardioverted by flecainide on day 55.

Electrical remodelling

A number of studies on electrical properties in horses with induced AF have been published (5, 7–9) and in one of them, spontaneous cardioversion to SR allowed refractory period measurements without drug interferences (8). The equine atrial refractoriness is rate-dependent and decreases with AF (7–9) in a similar way to humans (21), dogs (22), pigs (23) and goats (2). Shortening of the refractory period allows more

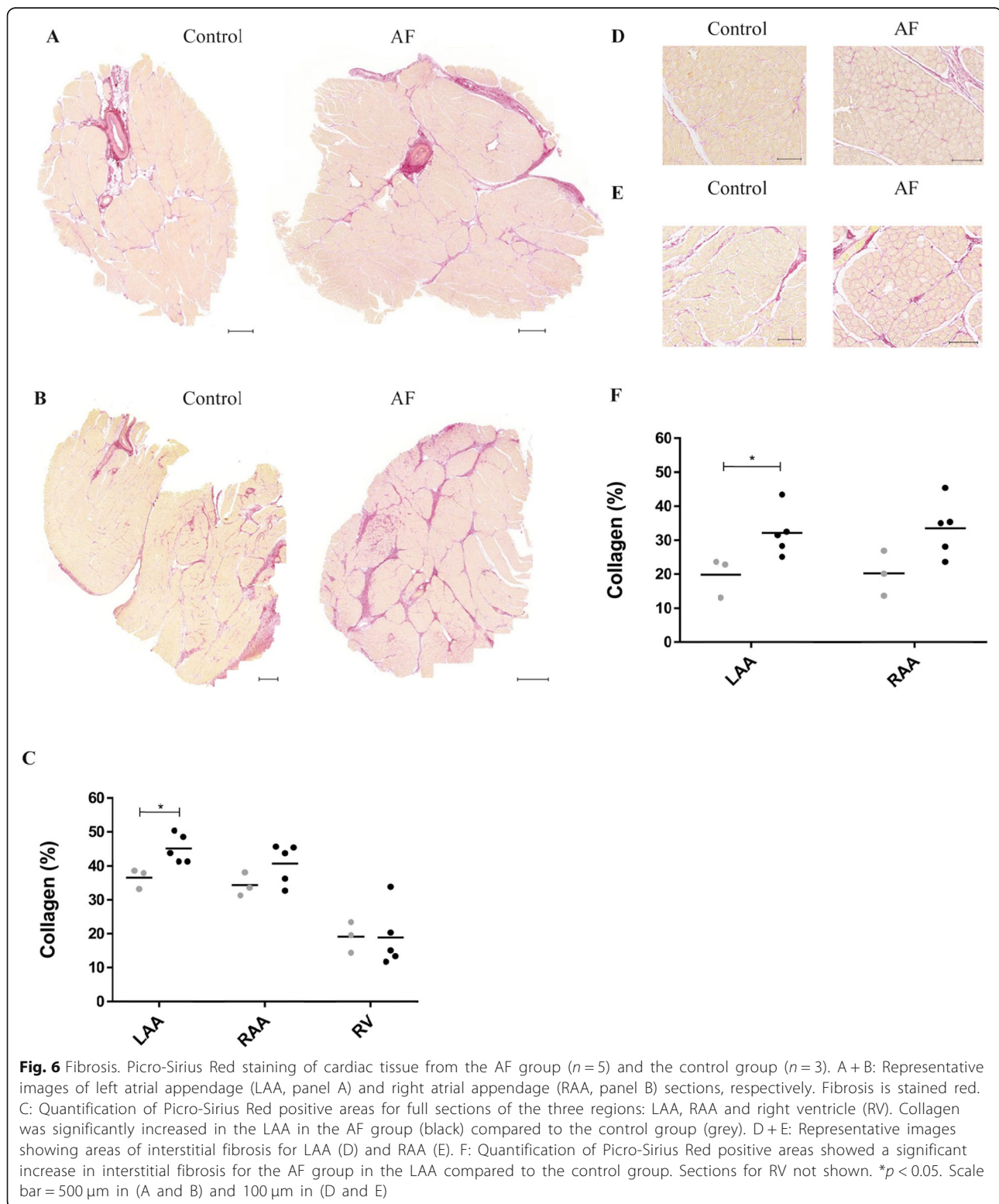


fibrillatory waves to co-exist, which further promotes AF. In this study, we measured the rate of the fibrillatory waves while the horses were in AF. Several studies have validated AFR as a measurement of electrical remodelling (24–26), and this method allowed us to study the progression of electrical remodelling non-invasively and without drug interference. We found a significant increase in AFR between day 1 and day 55, which is representative of electrical remodelling. We have previously studied AFR in horses with both short-term induced AF and spontaneous persistent AF (26). Similar to the findings in this study, the AFR in horses with induced short-term AF was lower (269 ± 36 fpm) compared to horses with spontaneous persistent AF (364 ± 26 fpm) (26). These values correspond well with AFR values in patients with paroxysmal and persistent AF, respectively (25, 27).

Electrical remodelling also describe changes in the genes encoding ion channels during AF. In this study, no difference in ion channel expression was observed between the AF and control group. Other studies have found a down-regulation in the L-type Ca^{2+} channel, the α subunit of cardiac Na^{+} channels and $\text{Kv}4.3$ channel (28, 29), however, as these analyses are underpowered similar conclusions cannot be made from the present study.

Functional remodelling

Atrial fibrillation is also known to cause atrial enlargement and contractile dysfunction that can persist several days after cardioversion (30). In patients, atrial contractile dysfunction, also known as “atrial stunning”, is considered an important risk factor for thromboembolisms (31). In this study, we observed a significant reduction in atrial



function (LA-Fac_{active}) three days after AF induction was initiated. Atrial remodelling has also been documented in dogs after 6 weeks of continuous pacing (22) and a study on instrumented goats tachypaced into AF, showed that

atrial function was reduced already after 5 min of AF and that the reduction increased with AF duration (32). Similar results have been described for horses with spontaneous (18) and induced AF (8, 33).

Ventricular function

Atrial fibrillation is associated with impaired ventricular function and heart failure is a common comorbidity in AF patients. Although not fully elucidated, this is likely to be the result of a tachycardia-induced cardiomyopathy caused by a persistently increased HR (34). In human patients, the increased HR is often managed with rate-control drugs such as beta-blockers (1). Other animal models also have increased HR, and these are often treated medically with digoxin, or surgically with an AV nodal ablation (20). Horses have a high vagal tone, and if they develop persistent AF they usually have a normal to slightly increased HR (35). In accordance with this, we found no significant difference in HR between the AF and control group. In addition, no changes in ventricular size or function from the echocardiographic examinations were found and no differences in ventricular fibrosis between control and AF group were observed. These results are in accordance with observations from the equine clinic, where horses with spontaneous AF rarely develop heart failure without underlying cardiac disease (18, 36). Tachycardia induced heart failure albeit medical rate control has been shown in pigs and dogs, while goats did not show signs of heart failure. Increased myocardial fibrosis was also evident in the ventricles of the pigs and dogs but not in the goats (20).

Cardioversion to sinus rhythm.

The success rate of medical cardioversion to SR decreases as AF progresses (1). A human clinical study previously reported that the cardioversion success rate decreased from 86 to 22% if the patients treated with flecainide had been in AF for longer than 10 days (37). We found similar results in this study, as the cardioversion success rate fell from 100% on days 3 and 9 to 33% on day 55. This suggests that the horse could be an interesting model for testing novel antiarrhythmic drugs, as it seems that the response to medical treatment is comparable.

Structural remodelling

In addition to electrical and functional remodelling, AF is also known to cause structural remodelling, which includes hypertrophy of the cardiomyocytes, myolysis, alterations in connexin expression and interstitial fibrosis, all of which increase conduction heterogeneity and support the maintenance of AF (30, 38). To our knowledge, this is the first study to compare structural remodelling in horses with and without AF and we found significantly increased amounts of collagen in the AF group. The difference between groups was more pronounced in the left atrium compared to the right atrium, where only a tendency was present. Several studies in both human patients (39) and animal models (20) show an increase in collagen as a consequence of AF. The literature seems to agree on increased fibrosis in the left atrium in

patients with AF, yet there are mixed results regarding right atrial fibrosis (40). Some studies report an equal amount of fibrosis in both the left and right atrium, while other studies report similar findings as this study, where less fibrosis was observed in the right atrium compared to the left (41–43). Atrial fibrosis increases with age which have been suggested to be a contributing factor to the increased AF burden in the aging population (44). In this study two out of the three control horses were above the age of 15 years which might have caused an increase in fibrosis in the control group.

Limitations

This study is limited by the relatively low number of animals included. The small sample size is strengthened by the longitudinal design of the study which facilitates repeated measurements, however, both the AF and SR measurements holds several missing values. The missing AF values are attributed to the prolonged AF induction, which could have been avoided by continuous burst-pacing. Sinus rhythm measurements were limited by the attenuated ability of flecainide to cardiovert longstanding AF. Future studies should consider either a more potent drug than flecainide or electrical cardioversion in order to obtain SR measurements. AFR only provides a summary of the atrial activity and local heterogeneity cannot be captured with this method. Technical errors prevented us from assessing local changes in AFCL and atrial refractoriness. Future studies should explore endo- and epicardial atrial recordings and mapping of fibrillation patterns.

Conclusion

In this study, we have described a model for chronic AF in horses which are naturally predisposed to AF. We observed electrical remodelling (as AFR increased during the study period), functional remodelling (described by atrial enlargement and reduced left atrial fractional area change), and structural remodelling (as the atria in the AF group were more fibrotic than in the control group), which are findings likely to contribute to the maintenance of AF. In accordance with this, a decrease in the efficacy of the anti-arrhythmic drug flecainide was observed. No functional remodelling of the ventricles or signs of heart failure were observed. This makes the model interesting for long-term AF studies.

Supplementary information

Supplementary information accompanies this paper at <https://doi.org/10.1186/s12872-019-1210-4>.

Additional file 1. "Supplementary material": Detailed description of how the echocardiographic ventricular variables were analysed, detailed description of tissue harvest, preparation of tissue post mortem and

quantitative reverse transcription polymerase chain reaction (qPCR, Table S1). In addition, the results of ion channel expression (Fig. S1), and echocardiographic measurement (Table S2–4) are shown.

Abbreviations

2D: Two-dimensional echocardiography; AF: Atrial fibrillation; AFCL: Atrial fibrillation cycle length; AFR: Atrial fibrillatory rate; AMM: Anatomical M-mode; ECG: Electrocardiography; HR: Heart rate; LA: Left atria; LAA: Left atrial appendage; LAA_o: Left atrial area at onset of the P wave; LAA_{max}: Left atrial area at mitral valve opening; LAA_{min}: Left atrial area at mitral valve closure; LAD: Left atrial diameter at mitral valve opening; LA-Fac_{active}: Active left atrial fractional area change; LA-Fac_{passive}: Passive left atrial fractional area change; LA-Fac_{total}: Total left atrial fractional area change; LV: Left ventricle; QTc: Corrected QT interval; RA: Right atrium; RAA: Right atrial appendage; SR: Sinus rhythm

Acknowledgements

The in vivo experiments were conducted at The University Hospital for Large Animals, Department of Veterinary Clinical Sciences, Faculty of Health and Medical Sciences, University of Copenhagen. We gratefully acknowledge all staff members for their support and the caretaking of the animals. Further, we wish to acknowledge Bjørg Zindernagel Klein, Karen Margrethe Haugaard and Kirsten Bomberg Ravn for their enormous contribution to this study and Dr. Melis for his invaluable assistance with data analysis. The ex vivo experiments were conducted at the Department of Biomedical Sciences and Core Facility for Integrated Microscopy (CFIM), Faculty of Health and Medical Sciences, University of Copenhagen.

Authors' contributions

EZH and HC contributed equally. Design and scientific rationale: EZH, HC, SMS, JTH, SP, THB, PGP, TJ, RB. Obtained funding: EZH, MFe, JTH, TJ, RB. In vivo experiments: EZH, HC, MFe, MFI, SMS, JTH, RB. Ex vivo experiments: EZH, DDK, THB. Data analysis: EZH, HC, MFI, DDK, JC. Drafted manuscript: EZH, HC, MFI, MFe, DDK, SMS, JTH, SP, THB, JC, PGP, TJ, RB. All authors read and approved the final version of the manuscript.

Funding

This work was generously funded by: The Danish Horse Levy Foundation, the Brdr. Hartmann Foundation, the Kirsten and Freddy Johansens foundation, The KUSTOS Foundation of 1881 and The Augustinus Foundation. The funding sources had no involvement in conducting the research or preparing the article.

Merle Fenner is funded by the European Union's Horizon 2020 research and innovation program under the Marie Skłodowska-Curie grant agreement No. 675351.

Availability of data and materials

The datasets used and/or analysed during the current study are available from the corresponding author on reasonable request.

Ethics approval and consent to participate

This study was approved by local ethical committee at the Department of Veterinary Clinical Sciences, University of Copenhagen and The Danish Animal Experiments Inspectorate (license number 2015-15-0201-00693) and was performed in accordance with the European Commission Directive 86/609/EEC.

Consent for publication

Not applicable.

Competing interests

The authors declare that they have no competing interests.

Author details

¹Department of Veterinary Clinical Sciences, Faculty of Health and Medical Sciences, University of Copenhagen, Højbakkegaard Allé 5, 2630 Taastруп, Denmark. ²Department of Biomedical Sciences, Faculty of Health and Medical Sciences, University of Copenhagen, Blegdamsvej 3, 2200 Copenhagen, Denmark. ³Department of Cardiology, The Heart Centre, Copenhagen University Hospital, Blegdamsvej 9, 2100 Copenhagen,

Denmark. ⁴Department of Medicine I, University Hospital Munich, Campus Grosshadern, Ludwig-Maximilians University Munich (LMU), Munich, Germany. ⁵Department of Forensic Medicine, Faculty of Health and Medical Sciences, University of Copenhagen, Frederik V's vej 11, 2100 Copenhagen, Denmark. ⁶Department of Cardiology, Clinical Sciences, Arrhythmia Clinic, Skåne University Hospital, Lund University, 21185 Lund, Sweden.

Received: 12 February 2019 Accepted: 26 September 2019

Published online: 21 October 2019

References

1. January CT, Wann LS, Alpert JS, Calkins H, Cigarroa JE, Cleveland JC Jr, et al. 2014 AHA/ACC/HRS guideline for the management of patients with atrial fibrillation: a report of the American College of Cardiology/American Heart Association task force on practice guidelines and the Heart Rhythm Society. *J Am Coll Cardiol*. 2014;64(21):e1–76.
2. Wijffels MC, Kirchhof CJ, Dorland R, Allessie MA. Atrial fibrillation begets atrial fibrillation. A study in awake chronically instrumented goats. *Circulation*. 1995;92(7):1954–68.
3. Nishida K, Michael G, Dobrev D, Nattel S. Animal models for atrial fibrillation: clinical insights and scientific opportunities. *Europace*. 2010;12(2):160–72.
4. Haugaard MM, Hesselkilde EZ, Pehrson S, Carstensen H, Flethoj M, Praestegaard KF, et al. Pharmacologic inhibition of small-conductance calcium-activated potassium (SK) channels by NS8593 reveals atrial antiarrhythmic potential in horses. *Heart rhythm : the official journal of the Heart Rhythm Society*. 2015;12(4):825–35.
5. Carstensen H, Kjaer L, Haugaard MM, Flethoj M, Hesselkilde EZ, Kanters JK, et al. Antiarrhythmic effects of combining Dofetilide and Ranolazine in a model of acutely induced atrial fibrillation in horses. *J Cardiovasc Pharmacol*. 2018;71(1):26–35.
6. Decloedt A, Schwarzwald CC, De Clercq D, Van Der Vekens N, Pardon B, Reef VB, et al. Risk factors for recurrence of atrial fibrillation in horses after cardioversion to sinus rhythm. *Journal of veterinary internal medicine / American College of Veterinary Internal Medicine*. 2015;29(3):946–53.
7. Haugaard MM, Pehrson S, Carstensen H, Flethoj M, Hesselkilde EZ, Praestegaard KF, et al. Antiarrhythmic and electrophysiologic effects of flecainide on acutely induced atrial fibrillation in healthy horses. *Journal of veterinary internal medicine / American College of Veterinary Internal Medicine*. 2015;29(1):339–47.
8. De Clercq D, van Loon G, Tavernier R, Duchateau L, Deprez P. Atrial and ventricular electrical and contractile remodeling and reverse remodeling owing to short-term pacing-induced atrial fibrillation in horses. *Journal of veterinary internal medicine / American College of Veterinary Internal Medicine*. 2008;22(6):1353–9.
9. Van Loon G, Duytschaever M, Tavernier R, Fonteyne W, Jordaens L, Deprez P. An equine model of chronic atrial fibrillation: methodology. *Veterinary journal (London, England : 1997)*. 2002;164(2):142–50.
10. De Clercq D, van Loon G, Tavernier R, Verbesselt R, Deprez P. Use of propafenone for conversion of chronic atrial fibrillation in horses. *Am J Vet Res*. 2009;70(2):223–7.
11. Van Loon G, Tavernier R, Duytschaever M, Fonteyne W, Deprez P, Jordaens L. Pacing induced sustained atrial fibrillation in a pony. *Canadian Journal of Veterinary Research-Revue Canadienne De Recherche Veterinaire*. 2000;64(4):254–8.
12. Van Loon G, Fonteyne W, Rottiers H, Tavernier R, Jordaens L, D'Hont L, et al. Dual-chamber pacemaker implantation via the cephalic vein in healthy equids. *Journal of veterinary internal medicine / American College of Veterinary Internal Medicine*. 2001;15(6):564–71.
13. Carstensen H, Hesselkilde EZ, Fenner M, Loft-Andersen AV, Flethoj M, Kanters JK, et al. Time-dependent antiarrhythmic effects of flecainide on induced atrial fibrillation in horses. *Journal of veterinary internal medicine / American College of Veterinary Internal Medicine*. 2018;32(5):1708–17.
14. Pedersen PJ, Kanters JK, Buhl R, Klaerke DA. Normal electrocardiographic QT interval in race-fit Standardbred horses at rest and its rate dependence during exercise. *Journal of veterinary cardiology : the official journal of the European Society of Veterinary Cardiology*. 2013;15(1):23–31.
15. Platonov PG, Corino VD, Seifert M, Holmqvist F, Sornmo L. Atrial fibrillatory rate in the clinical context: natural course and prediction of intervention outcome. *Europace*. 2014;16 Suppl 4:iiv110–iv9.
16. Stridh M, Sornmo L. Spatiotemporal QRST cancellation techniques for analysis of atrial fibrillation. *IEEE Trans Biomed Eng*. 2001;48(1):105–11.

17. Flethoj M, Schwarzwald CC, Haugaard MM, Carstensen H, Kanthers JK, Olsen LH, et al. Left ventricular function after prolonged exercise in equine endurance athletes. *Journal of veterinary internal medicine / American College of Veterinary Internal Medicine*. 2016;30(4):1260–9.
18. Schwarzwald CC, Schober KE, Bonagura JD. Echocardiographic evidence of left atrial mechanical dysfunction after conversion of atrial fibrillation to sinus rhythm in 5 horses. *Journal of veterinary internal medicine / American College of Veterinary Internal Medicine*. 2007;21(4):820–7.
19. Reef VB, Bain FT, Spencer PA. Severe mitral regurgitation in horses: clinical, echocardiographic and pathological findings. *Equine Vet J*. 1998;30(1):18–27.
20. Dossdall DJ, Ranjan R, Higuchi K, Kholmovski E, Angel N, Li L, et al. Chronic atrial fibrillation causes left ventricular dysfunction in dogs but not goats: experience with dogs, goats, and pigs. *Am J Physiol Heart Circ Physiol*. 2013;305(5):H725–31.
21. Daoud EG, Bogun F, Goyal R, Harvey M, Man KC, Strickberger SA, et al. Effect of atrial fibrillation on atrial refractoriness in humans. *Circulation*. 1996;94(7):1600–6.
22. Morillo CA, Klein GJ, Jones DL, Guiraudon CM. Chronic rapid atrial pacing. Structural, functional, and electrophysiological characteristics of a new model of sustained atrial fibrillation. *Circulation*. 1995;91(5):1588–95.
23. Rahme MM, Cotter B, Leistad E, Subudhayangkul S, Wadhwa M, Ungab G, et al. Persistence of atrial fibrillation after its induction-importance of the duration and dispersion of atrial refractoriness and electrical remodeling. *J Cardiovasc Pharmacol Ther*. 1999;4(2):113–20.
24. Holm M, Pehrson S, Ingemansson M, Sornmo L, Johansson R, Sandhall L, et al. Non-invasive assessment of the atrial cycle length during atrial fibrillation in man: introducing, validating and illustrating a new ECG method. *Cardiovasc Res*. 1998;38(1):69–81.
25. Bollmann A, Kanuru NK, McTeague KK, Walter PF, DeLurgio DB, Langberg JJ. Frequency analysis of human atrial fibrillation using the surface electrocardiogram and its response to ibutilide. *Am J Cardiol*. 1998;81(12):1439–45.
26. Hesselkilde EZ, Carstensen H, Haugaard MM, Carlson J, Pehrson S, Jespersen T, et al. Effect of flecainide on atrial fibrillatory rate in a large animal model with induced atrial fibrillation. *BMC Cardiovasc Disord*. 2017;17(1):289.
27. Platonov PG, Stridh M, de Melis M, Urban L, Carlson J, Corbucci G, et al. Analysis of atrial fibrillatory rate during spontaneous episodes of atrial fibrillation in humans using implantable loop recorder electrocardiogram. *J Electrocardiol*. 2012;45(6):723–6.
28. Yue L, Melnyk P, Gaspo R, Wang Z, Nattel S. Molecular mechanisms underlying ionic remodeling in a dog model of atrial fibrillation. *Circ Res*. 1999;84(7):776–84.
29. Van Wagoner DR, Pond AL, McCarthy PM, Trimmer JS, Nerbonne JM. Outward K⁺ current densities and Kv1.5 expression are reduced in chronic human atrial fibrillation. *Circ Res*. 1997;80(6):772–81.
30. Allesie M, Ausma J, Schotten U. Electrical, contractile and structural remodeling during atrial fibrillation. *Cardiovasc Res*. 2002;54(2):230–46.
31. Khan IA. Atrial stunning: basics and clinical considerations. *Int J Cardiol*. 2003;92(2–3):113–28.
32. Schotten U, Duytschaever M, Ausma J, Eijsbouts S, Neuberger HR, Allesie M. Electrical and contractile remodeling during the first days of atrial fibrillation go hand in hand. *Circulation*. 2003;107(10):1433–9.
33. Van Loon G. Atrial pacing and experimental atrial fibrillation in equines. Merelbeke (Belgium): Ghent University; 2001.
34. Wijesurendra RS, Casadei B. Atrial fibrillation: effects beyond the atrium? *Cardiovasc Res*. 2015;105(3):238–47.
35. Reef VB, Bonagura J, Buhl R, McGurrin MK, Schwarzwald CC, van Loon G, et al. Recommendations for management of equine athletes with cardiovascular abnormalities. *Journal of veterinary internal medicine / American College of Veterinary Internal Medicine*. 2014;28(3):749–61.
36. Reef VB, Levitan CW, Spencer PA. Factors affecting prognosis and conversion in equine atrial fibrillation. *Journal of veterinary internal medicine / American College of Veterinary Internal Medicine*. 1988;2(1):1–6.
37. Borgeat A, Goy JJ, Maendly R, Kaufmann U, Grbic M, Sigwart U. Flecainide versus quinidine for conversion of atrial fibrillation to sinus rhythm. *Am J Cardiol*. 1986;58(6):496–8.
38. Platonov PG. Atrial fibrosis: an obligatory component of arrhythmia mechanisms in atrial fibrillation? *Journal of geriatric cardiology : JGC*. 2017; 14(4):233–7.
39. Li Y, Jian Z, Yang ZY, Chen L, Wang XF, Ma RY, et al. Increased expression of connective tissue growth factor and transforming growth factor-beta-1 in atrial myocardium of patients with chronic atrial fibrillation. *Cardiology*. 2013;124(4):233–40.
40. Dzeshka MS, Lip GY, Snezhitskiy V, Shantsila E. Cardiac fibrosis in patients with atrial fibrillation: mechanisms and clinical implications. *J Am Coll Cardiol*. 2015;66(8):943–59.
41. Cosgrave J, Foley JB, Flavin R, O'Brian DS, Fitzpatrick E, Bennett K, et al. Preoperative atrial histological changes are not associated with postoperative atrial fibrillation. *Cardiovascular pathology : the official journal of the Society for Cardiovascular Pathology*. 2006;15(4):213–7.
42. Swartz MF, Fink GW, Lutz CJ, Taffet SM, Berenfeld O, Vikstrom KL, et al. Left versus right atrial difference in dominant frequency, K⁺ channel transcripts, and fibrosis in patients developing atrial fibrillation after cardiac surgery. *Heart rhythm : the official journal of the Heart Rhythm Society*. 2009;6(10):1415–22.
43. Swartz MF, Fink GW, Sarwar MF, Hicks GL, Yu Y, Hu R, et al. Elevated pre-operative serum peptides for collagen I and III synthesis result in post-surgical atrial fibrillation. *J Am Coll Cardiol*. 2012;60(18):1799–806.
44. Laredo M, Waldmann V, Khairy P, Nattel S. Age as a critical determinant of atrial fibrillation: a two-sided relationship. *The Canadian journal of cardiology*. 2018;34(11):1396–406.

Publisher's Note

Springer Nature remains neutral with regard to jurisdictional claims in published maps and institutional affiliations.

Ready to submit your research? Choose BMC and benefit from:

- fast, convenient online submission
- thorough peer review by experienced researchers in your field
- rapid publication on acceptance
- support for research data, including large and complex data types
- gold Open Access which fosters wider collaboration and increased citations
- maximum visibility for your research: over 100M website views per year

At BMC, research is always in progress.

Learn more [biomedcentral.com/submissions](https://www.biomedcentral.com/submissions)

