

Poster presentation

Open Access

Diagnostic performance of non-contrast whole-heart coronary magnetic resonance angiography combined with black-blood arterial wall imaging in patients with suspected coronary artery disease

Qinyi Dai^{*1}, Zhaoqi Zhang¹, Yi He¹, Wei Yu¹, Biao Lv¹, Zhanming Fan¹, Jing An², Lixin Jin³, Renate Jerecic⁴, Wolfgang Rehwald⁵, Guobin Li² and Meng Li¹

Address: ¹AnZhen Hospital, Capital Medical University, Beijing, PR China, ²Siemens Mindit Magnetic Resonance Ltd, Shenzhen, PR China, ³Research Scientist, Collaboration Team, Siemens Ltd, Shanghai, PR China, ⁴Siemens Ltd. Healthcare-Magnetic Resonance, Shanghai, PR China and ⁵Siemens Healthcare USA, Chicago, IL, USA

* Corresponding author

from 13th Annual SCMR Scientific Sessions
Phoenix, AZ, USA. 21-24 January 2010

Published: 21 January 2010

Journal of Cardiovascular Magnetic Resonance 2010, 12(Suppl 1):P38 doi:10.1186/1532-429X-12-S1-P38

This abstract is available from: <http://jcmr-online.com/content/12/S1/P38>

© 2010 Dai et al; licensee BioMed Central Ltd.

Introduction

Whole-heart-coronary-MRA (WH-CMRA) or black-blood-coronary-arterial-wall imaging have been used independently to detect coronary artery disease (CAD) in previous studies [1,2]. However, the diagnostic performance of a combined approach hasn't been reported yet.

Purpose

To evaluate the diagnostic performance of combined non-contrast WH-CMRA and black-blood-arterial-wall imaging in patients with suspected CAD.

Methods

Thirteen patients with suspected CAD were scanned at 1.5 T (MAGNETOM Sonata, Siemens, Germany) after written informed consent was obtained. WH-CMRA was acquired using a 3D ECG-triggered, navigator-gated, fat-suppressed, T2-prepared steady-state-free-precession sequence. Cross-sectional coronary wall imaging (thickness = 5 mm) was performed using a 2D-black-blood, navigator and ECG-gated, Turbo-Spin-Echo sequence with asymmetric-adiabatic-spectral inversion-recovery fat suppression [3]. Continuous slices without gap for wall imaging were positioned from pre to post of the suspected

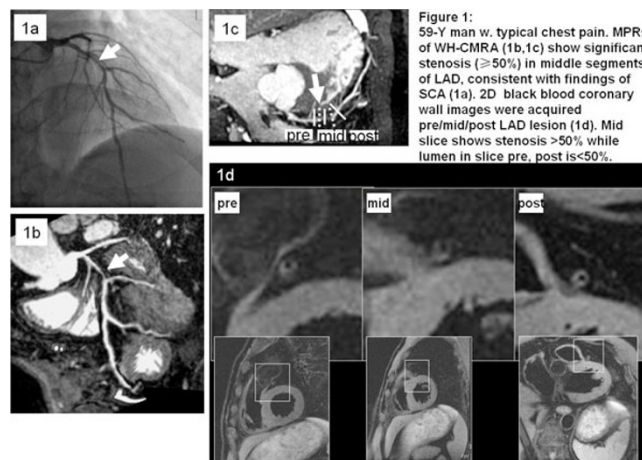


Figure 1
59-Y man w. typical chest pain. MPRs of WH-CMRA (1b, 1c) show significant stenosis ($\geq 50\%$) in middle segments of LAD, consistent with findings of SCA (1a). 2D black blood coronary wall images were acquired pre/mid/post LAD lesion (1d). Mid slice shows stenosis $>50\%$ while lumen in slice pre, post is $<50\%$.

Table 1: Patient population and results of non-contrast WH-CMRA and black blood arterial wall compared with SCA.

Patient	BMI	HR	Location	WH-CMRA	IQ WH-CMRA	Vessel Wall	IQ Vessel Wall	Match CMRA-V. Wall	Combined MR diagnosis	Stenosis on SCA	Match MR-SCA	Follow Up
P01, M/32	28.38	69	LAD proximal	+	4	+	4	Y	+	80%	Y	stent
			LAD middle	+	4	+	4	Y	+	75%	Y	stent
P02, M/37	26.77	68	LM	-	4	-	4	Y	-	-	Y	-
P03, M/45	29.04	60	LAD middle	-	4	-	4	Y	-	-	Y	-
P04, M/49	24.49	75-80	LAD proximal	-	3	+	3	N	+	50-60%	Y	-
P05, M/63	22.04	71	RCA proximal	+	4	+	4	Y	+	80-90%	Y	stent
			RCA middle	+	4	+	4	Y	+	80-90%	Y	stent
P06, F/72	33.33	82-93	LM	-	3	?	1	N	-	-	Y	-
			LAD proximal	-	3	?	1	N	-	-	Y	-
P07, F/67	34.17	73	LAD proximal	-	2	-	2	Y	-	60%	N	-
P08, M/59	27.04	68	LAD middle	+	4	+	4	Y	+	60-70%	Y	-
P09, M/54	25.56	60	LAD proximal	-	3	-	4	Y	-	-	Y	-
			RCA proximal	-	3	-	4	Y	-	-	Y	-
P10, M/48	25.39	72-79	LAD proximal	-	3	-	3	Y	-	-	Y	-
P11, M/46	26.58	65-72	RCA proximal	-	3	-	3	Y	-	-	Y	-
			RCA middle	-	3	-	3	Y	-	-	Y	-
P12, M/57	26.45	65	LAD proximal	+	4	+	4	Y	+	80%	Y	stent
			LAD middle	+	4	+	4	Y	=	85%	Y	stent

Table 1: Patient population and results of non-contrast WH-CMRA and black blood arterial wall compared with SCA. (Continued)

PI3, M/ 62	20/07	60	LAD middle	+	4	+	4	Y	+	70%	Y	CABG
			RCA proximal	-	4	-	4	Y	-	-	Y	-

"-" means stenosis <50%, "+" means stenosis ≥ 50%, "Y" = yes, "N" = no. Image quality (IQ) score: 1-poor, 2-good, 3-very good, 4-excellent.

lesion segment perpendicular to the multi-planar reformats (MPRs) of WH-CMRA. All patients received SCA within 1 week before or after the MR examination. Image quality of WH-CMRA and vessel wall images was evaluated on a segment basis by 4-point scale (1 - poor, 4 - excellent). Segments with a score of 1 in both techniques were excluded from analysis. A positive diagnosis of CAD was made based on the MR images when at least in one of both techniques a stenosis ≥ 50% was detected by visual analysis. Only left main (LM), proximal and middle segments of right coronary artery (RCA)/left anterior descending coronary artery (LAD) were included in our study. CAD was defined positive on SCA when showing a luminal diameter reduction ≥ 50%.

Results

20/65 segments were found stenosis by WH-CMRA. The mean total scan times for WH-CMRA and coronary wall imaging were 13 ± 1.2 min, 2 ± 0.3 min respectively. 10 of 20 segments were diagnosed as CAD by SCA. On a segment-based analysis, average image quality of WH-CMRA and arterial wall were 3.5 and 3.45, respectively. Two of 20 segments of wall image score were 1 because of rapid heart rate. MR results did not agree with SCA in one of 20 caused by high BMI (34.17) and irregular breathing. The sensitivity of WH-CMRA only and WH-CMRA combined with arterial wall were (8/10) and (9/10), NPV (10/12) and (10/11), PPV(8/8) and (9/9) respectively. No difference of specificity (10/10) between the two groups Figure 1 and table 1.

Conclusion

The combination of WH-CMRA and black blood coronary wall imaging improves diagnostic accuracy to detect CAD over WH-CMRA alone. The study with larger sample size is under investigation.

References

1. Yang Q, et al.: JACC 2009, 54:69-76.
2. Miao C, et al.: JACC 2009, 53:1708-1715.
3. Shea S, et al.: Proc ISMRM 2007, 15:2475.

Publish with **BioMed Central** and every scientist can read your work free of charge

"BioMed Central will be the most significant development for disseminating the results of biomedical research in our lifetime."

Sir Paul Nurse, Cancer Research UK

Your research papers will be:

- available free of charge to the entire biomedical community
- peer reviewed and published immediately upon acceptance
- cited in PubMed and archived on PubMed Central
- yours — you keep the copyright

Submit your manuscript here:
http://www.biomedcentral.com/info/publishing_adv.asp

