

RESEARCH

Open Access

Spatiotemporal expression of SERPINE2 in the human placenta and its role in extravillous trophoblast migration and invasion

Schu-Rern Chern^{1,2}, Sheng-Hsiang Li^{2,3}, Chien-Ling Chiu², Hsiao-Ho Chang², Chih-Ping Chen^{2,4,5,6,7,8*} and Edmund I Tsuen Chen^{1*}

Abstract

Background: SERPINE2, one of the potent serpins belonging to the plasminogen activator (PA) system, is involved in the tissue remodeling. We previously demonstrated the expression patterns of Serpine2 in the mouse placenta and uterus, indicating that Serpine2 is a major PA inhibitor in the placenta and uterus during the estrous cycle, pregnancy, and lactation. In this study, we further investigated the expression pattern of SERPINE2 in the human placenta and explored possible functional roles of SERPINE2 in regulating trophoblast activity.

Methods: Placental tissues from various trimesters were collected for real-time reverse-transcription polymerase chain reaction quantification. Immunohistochemical staining was performed in placental tissues to assure localization of SERPINE2. *SERPINE2* small interfering (si) RNA was applied to suppress its expression in villous explants and extravillous trophoblast-like 3A cells. Subsequent experiments to evaluate SERPINE2 levels, villous outgrowth, trophoblast invasion, and tube formation were performed.

Results: *SERPINE2* messenger RNA was detected in the human placenta during pregnancy with the highest levels in the third trimester. The SERPINE2 protein was present in villous syncytiotrophoblasts and trophoblasts of chorionic villi for anti-SERPINE2 immunostaining. Extravillous trophoblasts in the chorionic plate and basal plate confronting the invasive face of anchoring villi were also positive. In most decidual cells, SERPINE2 was observed in the cytoplasm. In addition, fibrinoid deposit was weakly immunoreactive. Introduction of *SERPINE2* siRNA into villous explants and trophoblast cells led to significantly reduced villous outgrowth, and trophoblastic migration and invasion. Moreover, capillary-like network formation of 3A cells in Matrigel was greatly attenuated by *SERPINE2* siRNA and SERPINE2 antiserum.

Conclusions: These data identify the temporal and spatial SERPINE2 distribution in the human placenta and suggest its possible role in modulating tissue remodeling of extravillous trophoblasts in the placenta during pregnancy.

Background

SERPINE2, also called protease nexin-1 and glial-derived neurite promoting factor, is a 44-kDa member of the serine protease inhibitor (SERPIN) superfamily. It was shown to be a potent inhibitor of the urokinase-plasminogen activator (uPA), tissue-type PA (tPA), thrombin, trypsin, factor XIa, and prostatic [1-5].

SERPINE2 is widely expressed in various tissues, including endothelial cells, fibroblasts, smooth muscle cells, tumor cells, glial cells, neurons, and placental cells [6-9]. Expression patterns of SERPINE2 in the placenta are quite dissimilar in different species. Expression levels of *SERPINE2* in the monkey endometrium and placenta during early pregnancy were below the level of detection [10]. In rats, *Serpine2* messenger RNA (mRNA) expression was only detected in endometrial stromal cells of the uterus, particularly at the time of implantation [11].

* Correspondence: cpc_mmh@yahoo.com; chenit@ym.edu.tw

¹Department of Biotechnology and Laboratory Science in Medicine, National Yang-Ming University, Taipei, Taiwan

²Department of Medical Research, Mackay Memorial Hospital, Taipei, Taiwan
Full list of author information is available at the end of the article

It was reported that SERPINE2 is highly expressed in the human placenta throughout pregnancy [12].

We demonstrated that Serpine2 is extensively expressed in various cell types in the mouse placenta and uterus, and in the human uterine endometrium [13,14]. In the murine uterus and placenta, it was prominently expressed in decidual stromal cells, metrial glands, endometrial epithelium, trophoblasts of the labyrinth, and spongiotrophoblasts during gestation. In humans, the SERPINE2 protein is highly expressed in the endometrium during the secretory phase [14]. These findings suggest a role for SERPINE2 in modulating tissue remodeling during implantation. Although SERPINE2 was found to be expressed by trophoblasts in various animals, the temporal expression of SERPINE2 in the human placenta during gestation still remains unclear [12].

Recent reports on human cancers indicated that SERPINE2 levels were elevated in pancreatic tumors [15], breast tumors [16], colorectal tumors [17], oral squamous carcinomas [18], and liposarcomas [19]. In contrast, the physiological function of SERPINE2 in placental extravillous trophoblasts that possess “pseudomalignant” features is less well documented [20].

In addition to previous findings of the relatively abundant levels of SERPINE2 in female reproductive tissues, existing microarray gene expression profiles of normal human tissues deposited in the NCBI GEO database (<http://www.ncbi.nlm.nih.gov/geo/>; GDS596, GDS1096, and GDS3113) show that the placenta expresses the highest levels of *SERPINE2* among all probed tissues except seminal vesicles. In the present study, we investigated the spatiotemporal expression of SERPINE2 in the human placenta. Further, knock-down experiments with *SERPINE2* were performed to examine if the suppression of *SERPINE2* in villous explants and trophoblast cells could modulate trophoblast invasion *in vitro*.

Methods

Placental tissue collection

Human placental tissues from the first (7~12 wk of gestation; $n = 5$), second (13~24 wk of gestation; $n = 4$), and third trimesters (31~38 wk of gestation; $n = 10$) were obtained from the Department of Obstetrics and Gynecology, Mackay Memorial Hospital. Signed, written consent was obtained from each patient before sample collection. The use of placental tissue specimens and the consent forms were approved by the Institutional Review Board of Mackay Memorial Hospital. Tissues were collected and washed three times in sterile saline, then they were (a) fixed in 10% neutral formalin (Merck, Darmstadt, Germany), embedded in paraffin, (b) stored in either RNAlater (Ambion, Austin, TX, USA) at -80°C for subsequent RNA extraction, and/or (c) finely minced

with a surgical knife and resuspended in culture medium (Medium 199 containing 10% fetal calf serum (FCS), penicillin/streptomycin, and amphotericin B).

Cell/explant culture and treatment

3A cells, derived from first-trimester human trophoblast by SV40 ts30 transformation [21], were purchased from ATCC (CRL-1584; Rockville, MD, USA). Cells were cultured in medium 199 (M199, Invitrogen, Carlsbad, CA, USA) supplemented with 10% FCS (Invitrogen) and 100 IU/ml penicillin/streptomycin (Invitrogen), and maintained at 37°C in 5% CO_2 . Preparation of placental explants was performed as described elsewhere [22]. Villous tips were dissected under a microscope to approximately $2\sim 3\text{ mm}^3$ and incubated for 16 h in culture medium at 37°C and 5% CO_2 . An extracellular matrix (ECM) gel solution was prepared using 1 ml neutralized collagen I (4 mg/ml, Sigma-Aldrich, St Louis, MO, USA) mixed with 1 ml Matrigel (10 mg/ml, BD Biosciences, San Jose, CA, USA). The ECM gel for explants was formed by adding 85 μl of the ECM solution onto the surface of 6-well culture dishes (Nunc, Roskilde, Denmark). After hardening of the gels, the villous tips (explants) were put on top of the gel and immersed in medium for 2~4 h to allow adherence to the ECM. Explants were then flooded with 1 ml M199 medium in the absence or presence of small interfering RNA (siRNA). Three ECM gels in each well containing 9~12 and 30~36 explants of each placenta were utilized. Four placentas (with respective gestational ages of 9, 12, 16, and 20 wk) were subjected to explant culture. Villous outgrowth and migration of trophoblasts were evaluated following a previously published protocol [23]. Briefly, the explant morphology was carefully analyzed by two observers to judge explant outgrowth. The numbers of outgrowth sites of villous explants were recorded at 72 h. Migration of trophoblast cells in the ECM was scored at 120 h on a scale of 0-5 (0, no migration; 1, one or two sites of localized migration; 2, several sites of localized migration; 3, moderate migration; 4, moderate to extensive migration; and 5, extensive migration from several sites around the explant).

SERPINE2-targeted siRNAs and corresponding scrambled siRNAs were obtained from Sigma-Aldrich (for sequences see Additional file 1, Table S1). 3A cells (3×10^6) were transiently transfected with 0.05 μM of siRNAs using the Lipofectamine 2000 (Invitrogen) reagent, whereas villous cultures directly gained 1 μM siRNAs by an active transport mode [24]. After 24 h of transfection, 3A cells were trypsinized for subsequent experiments, including RNA extraction following a reverse-transcription polymerase chain reaction (RT-PCR), wound-healing assay, invasion assay, and tube formation as described below. During the culture of

explants, the medium was collected at 16 and 24 h for the Western blot analysis. At the end of the experiment, explants were harvested and processed for Western blotting, RNA extraction, and RT-PCR.

A batch of explants (at a gestational age of 14 wk) was cultured for 10 days in Matrigel to allow the ECM gel shank. The gel containing villi was fixed in 10% neutral buffered formalin for 24 h and processed for the immunohistochemical analysis.

Immunocytochemistry

Immunocytochemical staining was performed as previously described [14]. Briefly, placental tissues were collected, fixed in neutralized formalin, embedded in paraffin, and cut into 5- μ m sections. After the sections were deparaffinized and hydrated, they were treated with 3% hydrogen peroxide in phosphate-buffered saline (PBS, Invitrogen) for 15 min to quench any endogenous peroxidase activity, then blocked with 10% normal goat serum in PBS for 1 h. Immunocytochemistry for the SERPINE2 and trophoblast-specific CK7 marker was performed on tissues using anti-SERPINE2 antiserum (1:700) [14] and anti-human CK7 (1:100) (Dako, Copenhagen, Denmark) in blocking solution at 4°C for 16 h. Negative controls were performed by replacing primary antibodies with serum pretreated with SERPINE2-conjugated beads at the same concentration. After washing, slides were treated with biotin-conjugated goat anti-rabbit immunoglobulin G (IgG; ~3 μ g/ml) (Zymed, San Francisco, CA, USA). Slides were then incubated with horseradish peroxidase (HRP)-conjugated streptavidin (~1 μ g/ml) (Zymed) in the blocking solution for 40 min at room temperature. Protein signals were detected by 3-amino-9-ethylcarbazole (Zymed) staining. Slides were then counterstained with hematoxylin (Vector Laboratories, Burlingame, CA, USA) and photographed using a Zeiss AxioImager Z1 microscope system (Wetzlar, Germany) equipped with a digital camera and an automated acquisition system (TissueGnostics, Vienna, Austria).

RNA isolation and real-time RT-PCR

Total RNA of placental tissues and 3A cells was extracted using a QuickPrep RNA extraction kit (GE Healthcare Life Sciences, Uppsala, Sweden). To examine *SERPINE2* gene expression, an RT-PCR was conducted. PCR primers (for sequences see Additional file 1, Table S1) were designed to cross the junction between the exon and intron. Four micrograms of total RNA was reverse-transcribed using an iScript complementary DNA synthesis kit (Bio-Rad, Hercules, CA, USA) according to the manufacturer's instructions. The PCR was performed in a total volume of 20 μ l, and 25 ng of cDNA was added to the PCR mix made with 2-fold pre-mix containing fluorescein (Kapa SYBR Fast qPCR Kit,

KAPA Biosystems, Woburn, MA, USA). Amplification conditions were as follows: 95°C for 10 min, and then 40 cycles at 95°C for 15 s and at 60°C for 1 min using the CFX96 real-time PCR system (BioRad) in triplicate. The PCR amplification efficiency for each gene was tested to be sure it was equivalent to that of *RPLPO mRNA* examined in a cDNA dilution series. Product purity was checked through a melting curve analysis at the end of the real-time PCR. The accuracy of the PCR products was confirmed by DNA sequencing. Relative gene expression levels were determined using the threshold cycle (CT) method ($2^{-\Delta\Delta C_t}$ method) with reference to the endogenous *RPLPO* control [25]. Gene expression was normalized to RNA loading using primers for *RPLPO* as an internal standard.

Western blot analysis

Tissue extract proteins were separated by sodium dodecylsulfate-polyacrylamide gel electrophoresis (SDS-PAGE) on a 4%~15% gradient gel (Invitrogen) and were transferred to nitrocellulose membranes for immunostaining. Membranes were blocked with 10% (w/v) skim milk in PBS (blocking solution) for 2 h, and then incubated with anti-SERPINE2 antiserum (1:3000) or monoclonal anti- β -actin (1:5000, Sigma-Aldrich) in blocking solution for 1 h at room temperature. After gentle agitation in four changes of PBS for 15 min each, the membranes were immunoreacted with HRP-conjugated goat anti-rabbit IgG (1:10000, GE Healthcare Life Sciences) or HRP-conjugated anti-mouse IgG (1:15000; GE Healthcare Life Sciences) in blocking solution for 1 h. Immunoreactive bands were revealed using an enhanced chemiluminescence (ECL) substrate according to the manufacturer's instructions (Pierce, Rockford, IL, USA).

Collected medium (25 μ l) from explants and 3A cell cultures were subjected to Blue Sepharose (GE Healthcare Life Sciences) chromatography to remove albumin and analyzed by Western blotting. Residual albumin was taken as the loading control and immunodetected by a rabbit anti-BSA polyclonal antibody (1:2500, GeneTex, San Antonio, TX, USA).

Invasion assay

Invasion assays were carried out using Matrigel Invasion Chambers (BD Biosciences). Briefly, cells transfected with siRNAs (scrambled or *SERPINE2*) were trypsinized and seeded on Matrigel inserts in triplicate at a density of 5×10^4 cells/well in 200 μ l of culture medium. Following an incubation period of 48 h, the filter inserts were removed and washed three times with PBS. Cells were fixed with 4% paraformaldehyde (Merck) and stained with hematoxylin for 3 min. Cells on the upper side of the transwell membrane were removed with a cotton tip swab. Cell numbers on the filters were

counted under a microscope (IX71, Olympus, Tokyo, Japan).

Migration scratch assay

3A cells with or without siRNA treatment were harvested after 24 h of transfection, seeded into 10-cm dishes, and grown to about 95% confluence. A wound about 1 mm wide was created on cell monolayers by scraping them with a pipette tip. The dishes were washed with PBS to remove detached cells and incubated for 16 h at 37°C in the culture medium. After incubation, images were taken on an inverted light microscope (Olympus IX71) equipped with a digital camera. For quantification, these images were analyzed with the TScratch software tool [26]. This free software is able to automatically measure the area occupied by cells in the image. The cell-free area correlated with the ability of 3A cells to migrate into the scratch, and closure of the controls was used for normalization.

In vitro angiogenesis assay (tube-formation assay)

Matrigel was thawed on ice overnight, and 10 µl was pipetted with ice-cold pipette tips into the lower chambers of an angiogenesis slide (IBIDI, München, Germany) and allowed to harden for 30 min at 37°C. Then, 7500 cells with or without siRNA treatment were seeded on the chamber and incubated overnight in the absence or presence SERPINE2 anti-serum (1:100) in the medium. Images were taken using an Olympus DP71 microscope with a camera system and analyzed using Image-Pro Plus software vers. 6.0 (Media Cybernetics, Houston, TX, USA). Network formation was quantified by measuring the branch point, and total cord lengths were compared between silenced and non-silenced cells.

Statistical analysis

Data are expressed as the mean ± standard error of the mean (SEM). Results were subjected to a statistical analysis by Student's *t*-tests as appropriate using Prism 5.0c (GraphPad Prism, San Diego, CA, USA), and significance was accepted when $p < 0.05$. * $p < 0.05$; ** $p < 0.01$; *** $p < 0.001$. All experiments were repeated three or more times with similar results.

Results

Spatiotemporal expression of SERPINE2 in the human placenta

We analyzed the expression of *SERPINE2* in human placentas from various trimesters ($n = 5, 4,$ and 10 for the first, second, and third trimesters, respectively) at the mRNA level by real-time RT-PCR. The level of *SERPINE2* mRNA was about 2.7-fold higher in the third trimester compared to the first trimester (Figure 1A).

Immunohistochemistry was used to localize SERPINE2 in placental tissues obtained from the second trimester ($n = 3$). SERPINE2 protein expression was visible in extravillous trophoblast cells and decidual cells of the chorionic plate (Figure 1B). However, it was strongly expressed in villous syncytiotrophoblasts, cytotrophoblasts, decidual cells, extravillous trophoblasts anchoring the villous cell column (av-cc) adjunction zone, spiral arteries, and decidual stroma cells (Figure 1C, D). The immunoreaction was evident in extravillous trophoblasts invading the basal plate, where cytoplasm of most decidual cells were positively stained (Figure 1D). No detectable signal was found in septal endometrial stromal cells or mesenchymal cores of chorionic villi. Lower immunoreactivity was observed in fibrinoid deposits (Figure 1D). CK-7-positive extravillous trophoblasts were observed in the cell column (Figure 1E). Syncytiotrophoblasts and cytotrophoblasts in floating villi were strongly positive for SERPINE2 (Figure 1F, upper-left panel). Furthermore, most endothelia of spiral artery were both SERPINE2 and CK-7 positive (Figure 1F, lower panels). However, when slides were immunostained with control antiserum, no signal was detected (Figure 1G).

Villous explants

Villous explant culture on Matrigel was demonstrated as an *in vitro* model that allows the study of extravillous trophoblast outgrowth, migration, and invasion during the first trimester of gestation [22]. We preliminarily found that more SERPINE2 proteins were secreted into the culture medium during the outgrowth of explant villi and the invasion of trophoblasts (Figure 2A). Villi embodied within the shrunken gel (Figure 2B) at 10 d were examined with an immunohistochemical analysis. Trophoblasts with SERPINE2 staining had migrated, invaded, and formed networks among the gels (Figure 2C-F).

The trophoblast-derived cell line, 3A-sub E (3A) [21,27], was applied for the *in vitro* studies of SERPINE2 in extravillous trophoblasts. Of note, 3A cells express HLA-G, CD9, and CK-7 mRNAs, which are characteristics of invasive extravillous trophoblasts [27,28], as shown by an RT-PCR study (Additional file 2, Figure S1). Furthermore, *SERPINE2* mRNA levels in 3A cells resembled those of the first trimester placenta tissue (data not shown).

Knockdown of SERPINE2

In our examination of the effect of siRNA-mediated downregulation of *SERPINE2* (Figure 3), both mRNA and protein levels of *ex vivo* villous cultures and 3A cells were specifically suppressed. A scoring scale is illustrated (Additional file 3, Figure S2) to show explant outgrowth and invasion of trophoblasts. The depletion

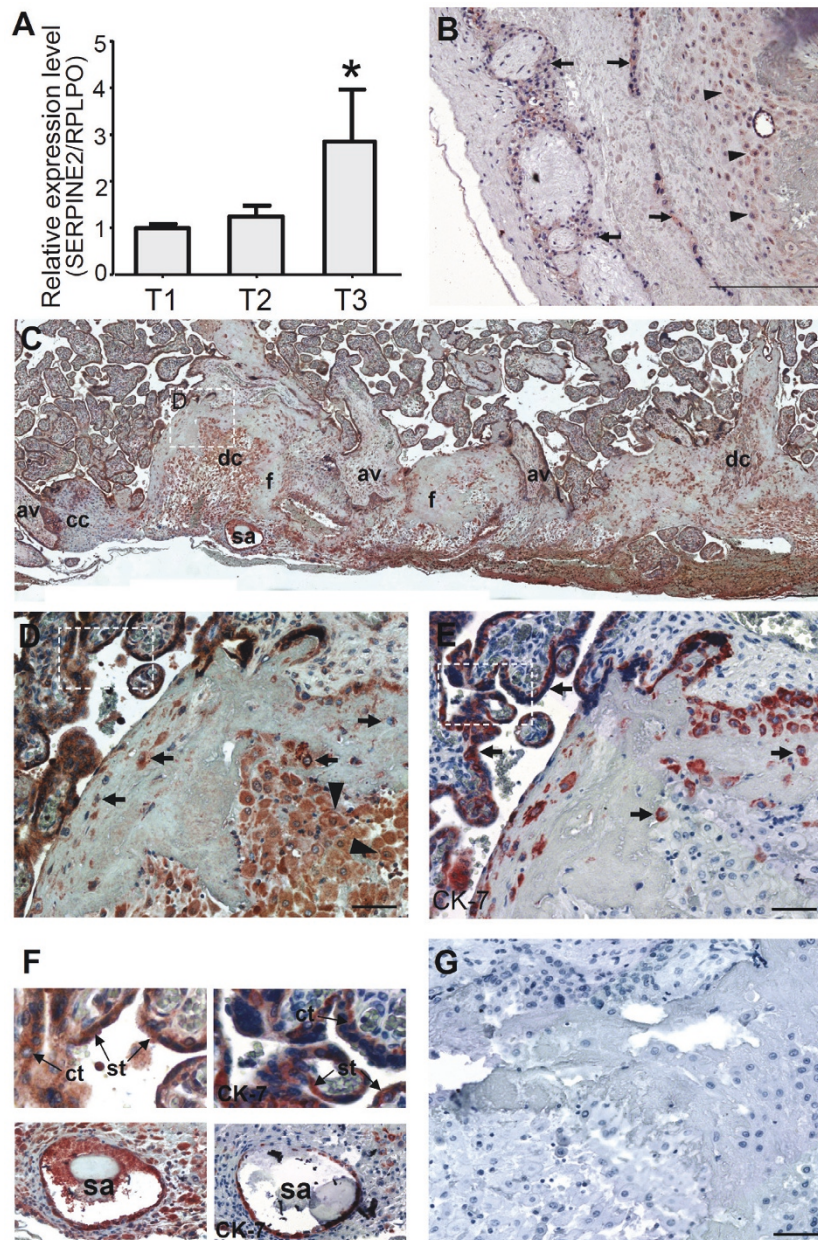
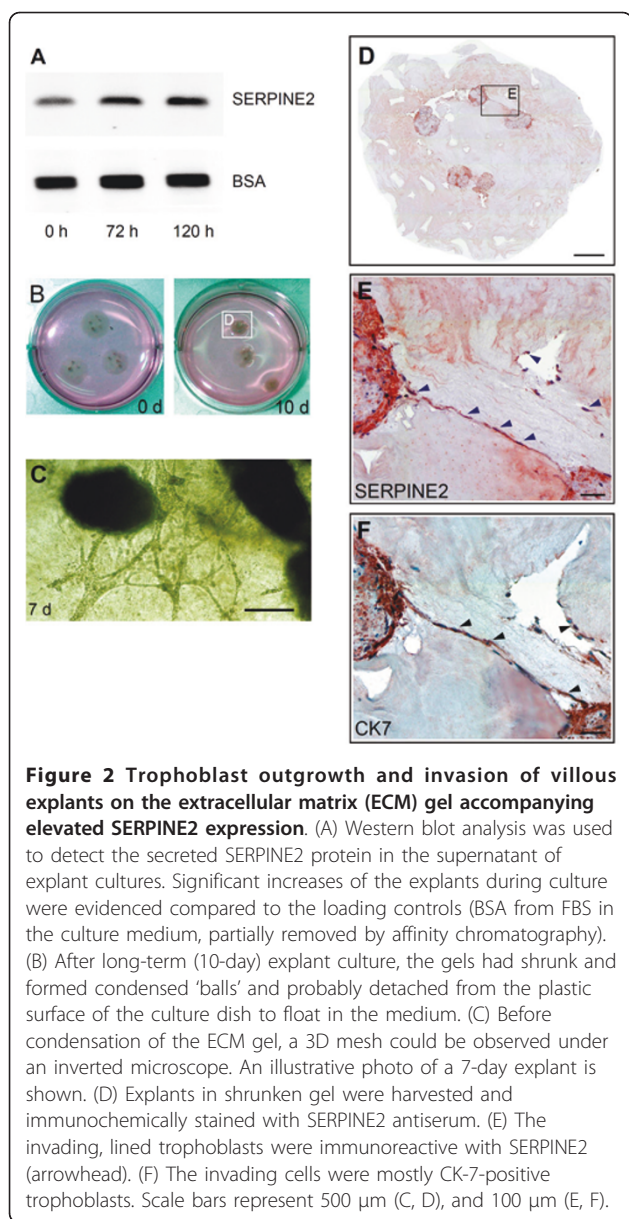
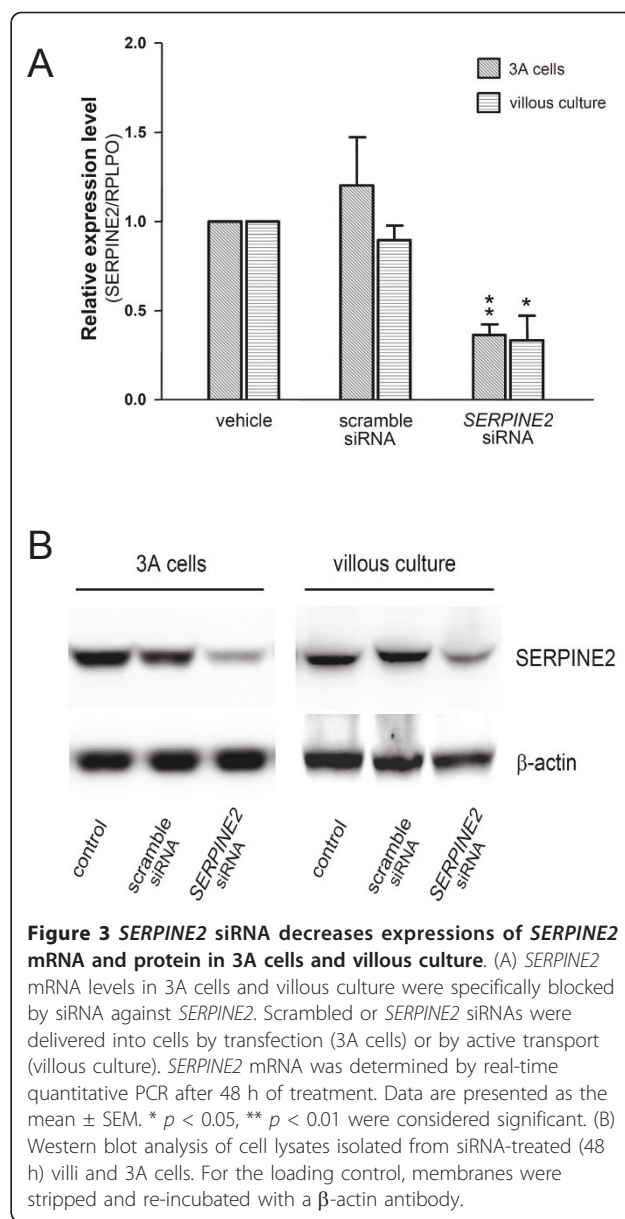


Figure 1 Spatiotemporal expression of SERPINE2 in the human placenta. (A) Expression of *SERPINE2* mRNA in human placentas in different trimesters. Levels of *SERPINE2* mRNA were determined by real-time quantitative PCR in 19 placental tissues collected in three gestational trimesters (T1, T2, and T3; $n = 5, 4,$ and $10,$ respectively). For each sample, the *SERPINE2* expression level was normalized to the expression level of the *RPLPO* gene in the same sample. Data are presented as the mean \pm SEM. * $p < 0.05$. Immunohistochemical staining showed the distribution of the *SERPINE2* protein in the human placenta at gestational week 15. (B) Moderate staining of extravillous trophoblasts (arrow) and decidual cells (arrowhead) in the chorionic plate, and very low staining in the chorionic mesoderm and fibrinoid deposits. (C) Positive immunostaining was extensively detected in decidual cells (dc), cytotrophoblasts, extravillous trophoblasts at the junction zone of the cell column (cc) and anchoring villi (av), and the endothelia of the spiral artery (sa); and weak staining was found in fibrinoids (f) and the villous mesenchyme. (D) The dashed-lined region in 1C was magnified to show intense staining in syncytiotrophoblasts and cytotrophoblasts in floating villi. The invaded extravillous trophoblasts (arrow) and decidual cells (arrowhead) at the basal plate were strongly stained. (E) Positive staining of cytokeratin (CK)-7 was confirmed in syncytiotrophoblasts and cytotrophoblasts in floating villi, and invading trophoblasts (arrow). (F) Upper panels, dashed-lined rectangle regions in D and E were magnified to show strong staining of *SERPINE2* (left) and CK-7 (right) in syncytiotrophoblasts (st) and cytotrophoblasts (ct) in floating villi. Lower panels, most of the endothelia of spiral arteries were positively stained with anti-*SERPINE2* (left), and anti-CK-7 (right) antibodies. (G) Negative staining of control antiserum. Scale bars represent $200 \mu\text{m}$ (B, C), and $50 \mu\text{m}$ (D, E, G).



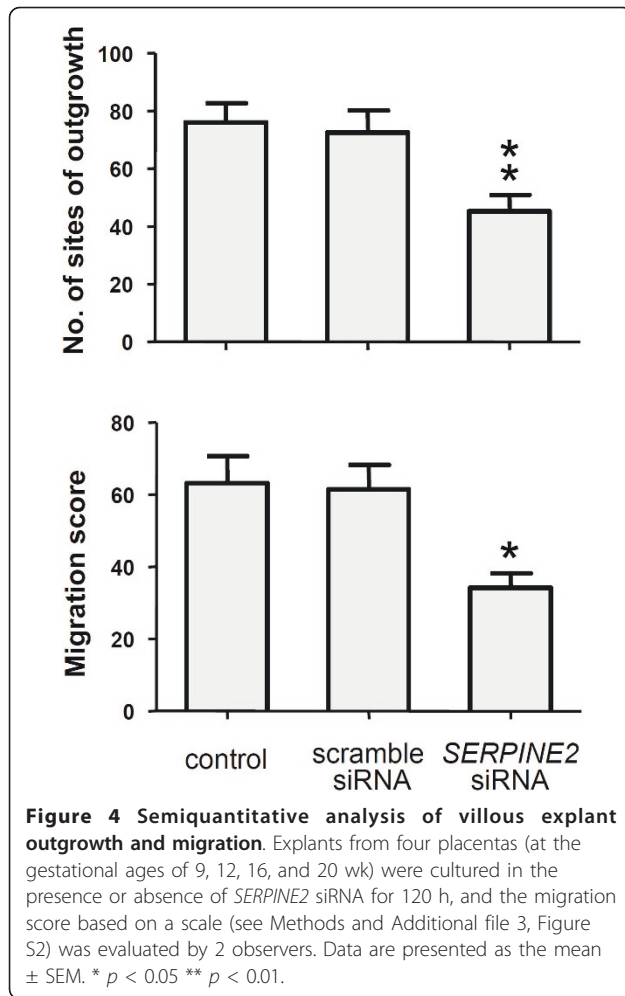
of SERPINE2 substantially suppressed villous outgrowth and the invasion of trophoblasts in ECM gels (Figure 4). Cells deprived of SERPINE2 exhibited reduced migration and invasion (Figure 5). Wound-healing assays demonstrated that SERPINE2 siRNA reduced the motility of 3A cells on plastic (Figure 5A). Compared to the controls, SERPINE2-silenced cells were significantly less migratory ($52.7\% \pm 5.9\%$ vs. $34.8\% \pm 7\%$, $p < 0.01$). Likewise, siRNA reduced the invasion of 3A cells through Matrigel-coated transwells (Figure 5B). The percentage of cells reaching the undersurface of the membrane had decreased to 70.4% ($p < 0.01$) after 48 h. To exclude that the effects of siRNA on invasion/motility were caused by a decrease in the proliferative capacity of



cells, accumulative cell numbers were determined (Additional file 4, Figure S3).

Tube-formation assay

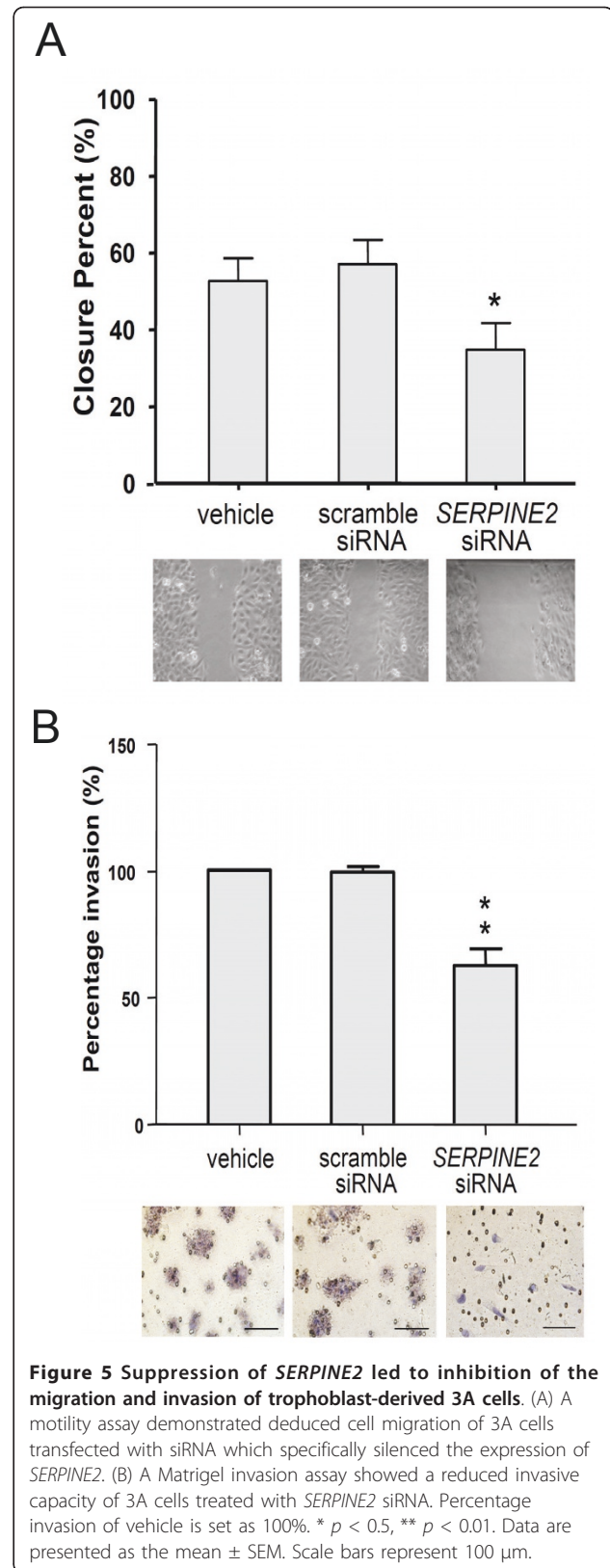
Extravillous trophoblast cells were found to develop endothelial cell-like behavior when cultivated on a matrix such as Matrigel. They migrated in the matrix to form networks of tube-like structures [29,30]. Similar phenomena were obtained from cultures of 3A cells on Matrigel (Figure 6A, lower panel). mRNA levels of SERPINE2 in 3A cells cultured on Matrigel were promoted to about 3.1-fold compared to cells cultured on plastic as control (Figure 6B). Secreted SERPINE2 was analyzed and found elevated during capillary formation (Figure

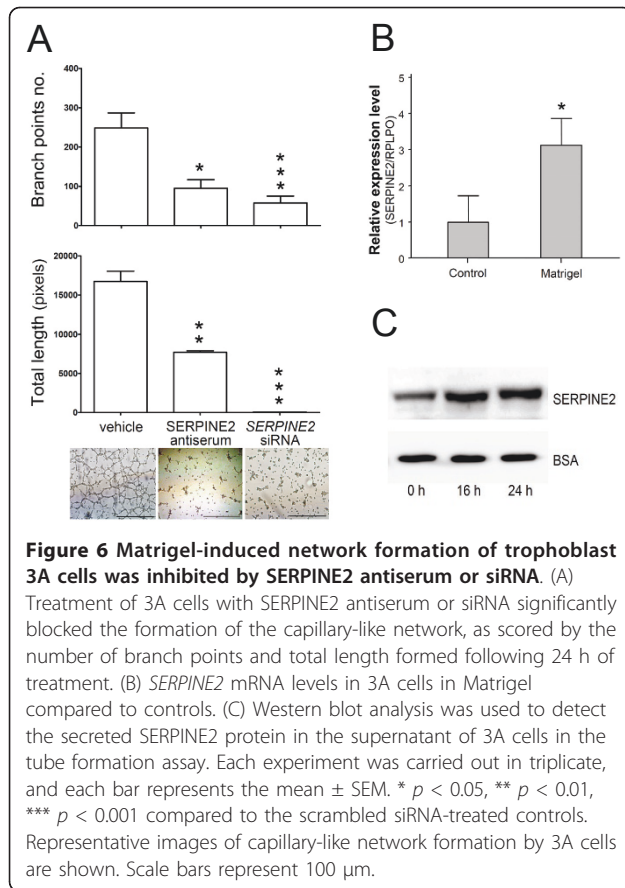


6C). We used 3A cells and an angiogenesis slide coated with Matrigel to investigate the effect of inhibiting *SERPINE2* on cell network formation. Compared to the controls, the number of networks and total length of capillaries were significantly reduced in the subset treated with *SERPINE2* siRNA and in the subset incubated with *SERPINE2* anti-serum (Figure 6A, upper panel). Immunofluorescent staining was also performed to assure the localization of *SERPINE2* in the formed capillary tubes (Additional file 5, Figure S4).

Discussion

In this study, we demonstrated that *SERPINE2* was extensively expressed in several cell types that exist in the human placenta. It was highly expressed in syncytiotrophoblasts, cytotrophoblasts, and extravillous trophoblasts in the placenta, while it was relatively weakly expressed in decidual cells (Figure 1D). These results were similar to a previous report on the term human





Serine proteases and their cognate inhibitors were documented to play key roles in matrix remodeling and degradation in the uterus. Accordingly, a well-regulated balance between levels of protease and its inhibitor during endometrial matrix remodeling and restricted trophoblast invasion are essential for a successful pregnancy [33]. We herein showed that downregulation of *SERPINE2* mediated by siRNA effectively suppressed the outgrowth of villous explants and tended to inhibit extravillous trophoblast invasion (Figure 4). In trophoblast-derived 3A cells, *SERPINE2* siRNA significantly impaired both migration and invasion (Figure 5). It seems that the depletion of *SERPINE2* disturbs the balance between proteases and protease inhibitors, causes a shift in the ECM profile, and further affects the activity of trophoblasts.

During the first trimester of pregnancy, spiral arteries transform into wide-caliber, low-resistance vessels, extravillous trophoblasts invade through the maternal decidua to the spiral arteries, and then differentiate into tube structures, lining the artery walls with endothelial cells. Blockage of *SERPINE2* inhibited 3A cell formation of capillary-like networks in Matrigel (Figure 6B), suggesting that *SERPINE2* is essential for invading trophoblasts to develop vasculogenic mimicry. We therefore propose the following scenario for the regulation of extravillous trophoblasts in tissue remodeling by *SERPINE2*. *SERPINE2* in the ECM establishes a micro-environment that facilitates trophoblast cell migration, and further promotes trophoblast cells aligning with themselves or with the maternal endothelium to establish vasculature structures via an unknown signaling pathway. Additionally, *SERPINE2* in the ECM may originate from trophoblasts themselves or from maternal decidual cells in a coordinated manner.

Plasminogen activator inhibitor-1 (PAI-1 or *SERPINE1*), the phylogenetically closest relative of *SERPINE2*, is more deeply studied, as exemplified by a body of published work [34]. Actually, *SERPINE1* mRNA seems to be the major PA inhibitor in the human placenta (our unpublished data). The uPA-uPAR system and PAI-1 are undoubtedly associated with malignances through regulating tumor cell proliferation, migration, invasion, metastasis, and apoptosis [35-38], although contrary to what would be expected for the function of a cellular protease inhibitor. Likewise, *SERPINE2* is reported to be upregulated in various tumors [15-19]. Further studies of serine proteases and cognate inhibitors' effects on placental tissue development will greatly enhance our understanding of the physiological and pathophysiological mechanisms of tissue remodeling.

placentas [12] which showed strong *SERPINE2* immunofluorescence in amnion, chorion, and trophoblastic epithelia; lower intense and interspersed signals in decidual cells and stroma. We further specified the colocalization of *SERPINE2* and invaded extravillous trophoblasts at the basal plate and the endothelium of the spiral artery. Recently, we demonstrated that *Serpine2* was extensively expressed in labyrinthine trophoblasts, spongiotrophoblasts, and decidual cells, but was less expressed in giant cells in the mouse placenta. The expression pattern of the placental *SERPINE2* protein greatly differs in various species. In rhesus monkeys, *SERPINE2* protein expression in the compartments of the endometrium and placenta was lower or undetectable [10]. However, the *SERPINE2* protein is extensively expressed in human and murine placentas.

Interestingly, the pattern of *SERPINE2* expression in the human placenta presented here during gestation parallels circulating uPA and tPA levels during pregnancy [31,32]. However, *SERPINE2* has broad-spectrum activity specific to serine proteases, including trypsin, thrombin, factor XIa [4], and prostaticin [5]. The question of what the cognate protease is in the human placenta needs to be further investigated.

Conclusions

SERPINE2 is highly expressed in the human placenta during pregnancy. Blockage of *SERPINE2* results in inhibition of extravillous trophoblast activity *in vitro*, including migration, invasion, and tube formation. Taken together, these data suggest that *SERPINE2* plays important roles in modulating placental tissue remodeling during pregnancy. Our studies may provide helpful insights into the roles of *SERPINE2* in placental remodeling.

Additional material

Additional file 1: Supplemental Table S1: Sequences of real-time PCR primers and siRNAs.

Additional file 2: Supplemental figure S1: Characterization of the trophoblast 3A cell line by RT-PCR analysis.

Additional file 3: Supplemental figure S2: Illustrated pictures of scoring scale of the villous explant migration base on a ordered series.

Additional file 4: Supplemental figure S3: Proliferation assay using an Alamar Blue dye reduction analysis of the viability of 3A cells after siRNA treatment.

Additional file 5: Supplemental figure S4: Immunofluorescence analysis of the network formed in the tube-formation (micro-angiogenesis) assay.

Acknowledgements

This work was supported by grants (NSC99-2628-B-195-001-MY3 and NSC97-2314-B-195-006-MY3) from the National Science Council and Mackay Memorial Hospital (MMH-E-100-04), Taipei, Taiwan. We wish to thank Dr. CL Chang for his helpful discussions.

Author details

¹Department of Biotechnology and Laboratory Science in Medicine, National Yang-Ming University, Taipei, Taiwan. ²Department of Medical Research, Mackay Memorial Hospital, Taipei, Taiwan. ³Mackay Medicine, Nursing and Management College, Taipei, Taiwan. ⁴Department of Obstetrics and Gynecology, Mackay Memorial Hospital, Taipei, Taiwan. ⁵Department of Biotechnology, Asia University, Taichung, Taiwan. ⁶School of Chinese Medicine, College of Chinese Medicine, China Medical University, Taichung, Taiwan. ⁷Institute of Clinical and Community Health Nursing, National Yang-Ming University, Taipei, Taiwan. ⁸Department of Obstetrics and Gynecology, School of Medicine, National Yang-Ming University, Taipei, Taiwan.

Authors' contributions

SRC carried out Western blotting, evaluated the activity of villous trophoblasts, and drafted the manuscript. SHL helped draft the manuscript. CLC carried out real-time PCR analyses and cell culture. HHC carried out immunohistochemistry. CPC and EITC conceived the study, and participated in the project design and coordination. All authors read and approved the final manuscript.

Competing interests

The authors declare that they have no competing interests.

Received: 8 June 2011 Accepted: 2 August 2011

Published: 2 August 2011

References

1. Gloor S, Odink K, Guenther J, Nick H, Monard D: A glia-derived neurite promoting factor with protease inhibitory activity belongs to the protease nexins. *Cell* 1986, **47**(5):687-93.

2. Baker JB, Low DA, Simmer RL, Cunningham DD: Protease-nexin: a cellular component that links thrombin and plasminogen activator and mediates their binding to cells. *Cell* 1980, **21**(1):37-45.
3. Stone SR, Nick H, Hofsteenge J, Monard D: Glial-derived neurite-promoting factor is a slow-binding inhibitor of trypsin, thrombin, and urokinase. *Arch Biochem Biophys* 1987, **252**(1):237-44.
4. Knauer DJ, Majumdar D, Fong PC, Knauer MF: SERPIN regulation of factor Xla. The novel observation that protease nexin 1 in the presence of heparin is a more potent inhibitor of factor Xla than C1 inhibitor. *J Biol Chem* 2000, **275**(48):37340-6.
5. Chen LM, Skinner ML, Kauffman SW, Chao J, Chao L, Thaler CD, Chai KX: Prostatin is a glycosylphosphatidylinositol-anchored active serine protease. *J Biol Chem* 2001, **276**(24):21434-42.
6. Vaughan PJ, Cunningham DD: Regulation of protease nexin-1 synthesis and secretion in cultured brain cells by injury-related factors. *J Biol Chem* 1993, **268**(5):3720-7.
7. Bouton MC, Richard B, Rossignol P, Philippe M, Guillin MC, Michel JB, Jandrot-Perrus M: The serpin protease-nexin 1 is present in rat aortic smooth muscle cells and is upregulated in L-NAME hypertensive rats. *Arterioscler Thromb Vasc Biol* 2003, **23**(1):142-7.
8. Fayard B, Bianchi F, Dey J, Moreno E, Djaffer S, Hynes NE, Monard D: The serine protease inhibitor protease nexin-1 controls mammary cancer metastasis through LRP-1-mediated MMP-9 expression. *Cancer Res* 2009, **69**(14):5690-8.
9. Reinhard E, Meier R, Halfter W, Rovelli G, Monard D: Detection of glia-derived nexin in the olfactory system of the rat. *Neuron* 1988, **1**(5):387-94.
10. Lin HY, Zhang H, Yang Q, Wang HX, Wang HM, Chai KX, Chen LM, Zhu C: Expression of prostatin and protease nexin-1 in rhesus monkey (*Macaca mulatta*) endometrium and placenta during early pregnancy. *J Histochem Cytochem* 2006, **54**(10):1139-47.
11. Kim NK, Choi MJ, Chung HM, Sohn TJ, Hwang SG, Oh D, Lee HH, Lee YH, Ko JJ: Increased expression and localization of a serine protease inhibitor, protease nexin-1 (PN-1), in the ovary and uterus during implantation in rat. *Thromb Res* 2001, **103**(2):135-42.
12. White EA, Baker JB, McGrogan M, Kitos PA: Protease nexin 1 is expressed in the human placenta. *Thromb Haemost* 1993, **69**(2):119-23.
13. Chern SR, Li SH, Lu CH, Chen EI: Spatiotemporal expression of the serine protease inhibitor, *SERPINE2*, in the mouse placenta and uterus during the estrous cycle, pregnancy, and lactation. *Reprod Biol Endocrinol* 2010, **8**:127.
14. Lee RK, Fan CC, Hwu YM, Lu CH, Lin MH, Chen YJ, Li SH: *SERPINE2*, an inhibitor of plasminogen activators, is highly expressed in the human endometrium during the secretory phase. *Reprod Biol Endocrinol* 2011, **9**:38.
15. Buchholz M, Biebl A, Neesse A, Wagner M, Iwamura T, Leder G, Adler G, Gress TM: *SERPINE2* (protease nexin I) promotes extracellular matrix production and local invasion of pancreatic tumors in vivo. *Cancer Res* 2003, **63**(16):4945-51.
16. Candia BJ, Hines WC, Heaphy CM, Griffith JK, Orlando RA: Protease nexin-1 expression is altered in human breast cancer. *Cancer Cell Int* 2006, **6**:16.
17. Selzer-Plon J, Bornholdt J, Friis S, Bisgaard HC, Lothe IM, Tveit KM, Kure EH, Vogel U, Vogel LK: Expression of prostatin and its inhibitors during colorectal cancer carcinogenesis. *BMC Cancer* 2009, **9**:201.
18. Gao S, Krogdahl A, Sørensen JA, Kousted TM, Dabelsteen E, Andreassen PA: Overexpression of protease nexin-1 mRNA and protein in oral squamous cell carcinomas. *Oral Oncol* 2008, **44**(3):309-13.
19. Thelin-Järnum S, Lassen C, Panagopoulos I, Mandahl N, Aman P: Identification of genes differentially expressed in TLS-CHOP carrying myxoid liposarcomas. *Int J Cancer* 1999, **83**(1):30-3.
20. Ferretti C, Bruni L, Dangles-Marie V, Pecking AP, Bellet D: Molecular circuits shared by placental and cancer cells, and their implications in the proliferative, invasive and migratory capacities of trophoblasts. *Hum Reprod Update* 2007, **13**(2):121-41.
21. Chou JY: Human placental cells transformed by tsA mutants of simian virus 40: a model system for the study of placental functions. *Proc Natl Acad Sci USA* 1978, **75**(3):1409-13.
22. Aplin JD, Haigh T, Jones CJ, Church HJ, Vióvac L: Development of cytotrophoblast columns from explanted first-trimester human placental villi: role of fibronectin and integrin $\alpha_5\beta_1$. *Biol Reprod* 1999, **60**(4):828-38.
23. Newby D, Marks L, Cousins F, Duffie E, Lyall F: Villous explant culture: characterization and evaluation of a model to study trophoblast invasion. *Hypertens Pregnancy* 2005, **24**(1):75-91.

24. Black S, Kadyrov M, Kaufmann P, Ugele B, Emans N, Huppertz B: **Syncytial fusion of human trophoblast depends on caspase 8.** *Cell Death Differ* 2004, **11**(1):90-8.
25. Schmittgen TD, Livak KJ: **Analyzing real-time PCR data by the comparative C(T) method.** *Nat Protoc* 2008, **3**(6):1101-8.
26. Gebäck T, Schulz MM, Koumoutsakos P, Detmar M: **TScratch: a novel and simple software tool for automated analysis of monolayer wound healing assays.** *Biotechniques* 2009, **46**(4):265-74.
27. Straszewski-Chavez SL, Abrahams VM, Funai EF, Mor G: **X-linked inhibitor of apoptosis (XIAP) confers human trophoblast cell resistance to Fas-mediated apoptosis.** *Mol Hum Reprod* 2004, **10**(1):33-41.
28. Bilban M, Tauber S, Haslinger P, Pollheimer J, Saleh L, Pehamberger H, Wagner O, Knöfler M: **Trophoblast invasion: assessment of cellular models using gene expression signatures.** *Placenta* 2010, **31**(11):989-96.
29. Waddell JM, Evans J, Jabbour HN, Denison FC: **CTGF expression is up-regulated by PROK1 in early pregnancy and influences HTR-8/Svneo cell adhesion and network formation.** *Hum Reprod* 2011, **26**(1):67-75.
30. Dokras A, Gardner LM, Seftor EA, Hendrix MJ: **Regulation of human cytotrophoblast morphogenesis by hepatocyte growth factor/scatter factor.** *Biol Reprod* 2001, **65**(4):1278-88.
31. Coolman M, de Groot CJ, Steegers EA, Geurts-Moespot A, Thomas CM, Steegers-Theunissen RP, Sweep FC: **Concentrations of plasminogen activators and their inhibitors in blood preconceptionally, during and after pregnancy.** *Eur J Obstet Gynecol Reprod Biol* 2006, **128**(1-2):22-8.
32. Belo L, Santos-Silva A, Rumley A, Lowe G, Pereira-Leite L, Quintanilha A, Rebelo I: **Elevated tissue plasminogen activator as a potential marker of endothelial dysfunction in pre-eclampsia: correlation with proteinuria.** *BJOG* 2002, **109**(11):1250-5.
33. Salamonsen LA: **Role of proteases in implantation.** *Rev Reprod* 1999, **4**(1):11-22.
34. Binder BR, Mihaly J: **The plasminogen activator "paradox" in cancer.** *Immunol Lett* 2008, **118**(2):116-24.
35. Carroll VA, Binder BR: **The role of the plasminogen activation system in cancer.** *Semin Thromb Hemost* 1999, **25**(2):183-97.
36. Blasi F, Carmeliet P: **uPAR: a versatile signalling orchestrator.** *Nat Rev Mol Cell Biol* 2002, **3**(12):932-43.
37. Sidenius N, Blasi F: **The urokinase plasminogen activator system in cancer: recent advances and implication for prognosis and therapy.** *Cancer Metastasis Rev* 2003, **22**(2-3):205-22.
38. Binder BR, Mihaly J, Prager GW: **uPAR-uPA-PAI-1 interactions and signaling: a vascular biologist's view.** *Thromb Haemost* 2007, **3**: 336-42.

doi:10.1186/1477-7827-9-106

Cite this article as: Chern *et al.*: Spatiotemporal expression of SERPINE2 in the human placenta and its role in extravillous trophoblast migration and invasion. *Reproductive Biology and Endocrinology* 2011 **9**:106.

**Submit your next manuscript to BioMed Central
and take full advantage of:**

- Convenient online submission
- Thorough peer review
- No space constraints or color figure charges
- Immediate publication on acceptance
- Inclusion in PubMed, CAS, Scopus and Google Scholar
- Research which is freely available for redistribution

Submit your manuscript at
www.biomedcentral.com/submit

