

RESEARCH

Open Access

IGFBP-4 and -5 are expressed in first-trimester villi and differentially regulate the migration of HTR-8/SVneo cells

Erin J Crosley¹, Caroline E Dunk², Alexander G Beristain^{3,4} and Julian K Christians^{1*}

Abstract

Background: Adverse gestational outcomes such as preeclampsia (PE) and intrauterine growth restriction (IUGR) are associated with placental insufficiency. Normal placental development relies on the insulin-like growth factors -I and -II (IGF-I and -II), in part to stimulate trophoblast proliferation and extravillous trophoblast (EVT) migration. The insulin-like growth factor binding proteins (IGFBPs) modulate the bioavailability of IGFs in various ways, including sequestration, potentiation, and/or increase in half-life. The roles of IGFBP-4 and -5 in the placenta are unknown, despite consistent associations between pregnancy complications and the levels of two IGFBP-4 and/or -5 proteases, pregnancy-associated plasma protein -A and -A2 (PAPP-A and PAPP-A2). The primary objective of this study was to elucidate the effects of IGFBP-4 and -5 on IGF-I and IGF-II in a model of EVT migration. A related objective was to determine the timing and location of IGFBP-4 and -5 expression in the placental villi.

Methods: We used wound healing assays to examine the effects of IGFBP-4 and -5 on the migration of HTR-8/SVneo cells following 4 hours of serum starvation and 24 hours of treatment. Localization of IGFBP-4, -5 and PAPP-A2 was assessed by immunohistochemical staining of first trimester placental sections.

Results: 2 nM IGF-I and -II each increased HTR-8/SVneo cell migration with IGF-I increasing migration significantly more than IGF-II. IGFBP-4 and -5 showed different levels of inhibition against IGF-I. 20 nM IGFBP-4 completely blocked the effects of 2 nM IGF-I, while 20 nM IGFBP-5 significantly reduced the effects of 2 nM IGF-I, but not to control levels. Either 20 nM IGFBP-4 or 20 nM IGFBP-5 completely blocked the effects of 2 nM IGF-II. Immunohistochemistry revealed co-localization of IGFBP-4, IGFBP-5 and PAPP-A2 in the syncytiotrophoblast layer of first trimester placental villi as early as 5 weeks of gestational age.

Conclusions: IGFBP-4 and -5 show different levels of inhibition on the migration-stimulating effects of IGF-I and IGF-II, suggesting different roles for PAPP-A and PAPP-A2. Moreover, co-localization of the pappalysins and their substrates within placental villi suggests undescribed roles of these molecules in early placental development.

Keywords: Pappalysins, PAPP-A, PAPP-A2, Insulin-like growth factor-binding proteins, IGFBP-4, IGFBP-5, Trophoblast migration

Background

Adverse gestational outcomes such as preeclampsia (PE) and intrauterine growth restriction (IUGR) are thought to be caused, at least in part, by deficiencies in processes critical to placental development, including extravillous trophoblast (EVT) invasion. EVT invade the maternal decidua and replace the endothelium of uterine spiral

arteries, thus increasing vessel diameter to ensure adequate blood flow required for oxygen and nutrient delivery to the placenta [1,2]. In both human villous explants and primary trophoblast cultures, insulin-like growth factors I and II (IGF-I and IGF-II, respectively), stimulate trophoblast proliferation and EVT migration [3,4].

The bioavailability of IGF-I and -II is modulated by six insulin-like growth factor-binding proteins (IGFBPs) [3,5,6], with the release of the IGFs generally achieved through proteolysis of the IGFBPs [7]. In addition to

* Correspondence: julian_christians@sfu.ca

¹Biological Sciences, Simon Fraser University, V5A 1S6 Burnaby, Canada
Full list of author information is available at the end of the article

reducing the availability of the IGFs, in some contexts IGFBPs increase the half-life of IGFs, concentrate them in particular regions and/or potentiate their effects [8]. Furthermore, IGFBP-1, IGFBP-2, IGFBP-3 and IGFBP-5 all exert IGF-independent effects in a variety of cell models and tissues [3,6,9]. For example, IGFBP-1 stimulates migration in an IGF-independent manner in HTR-8/SVneo cells, an immortalized trophoblast cell line commonly used to model EVT migration and invasion [10]. In BeWo cells, an immortalized choriocarcinoma cell line commonly used to model the villous cytotrophoblast, IGFBP-3 inhibits proliferation in an IGF-independent manner [11]. The proteolytic fragments of cleaved IGFBP-3 and -5 have also been shown to have effects in other systems [12-14].

The pappalysins, pregnancy-associated plasma proteins-A and -A2 (PAPP-A and PAPP-A2, respectively), are two IGFBP proteases that have been consistently associated with a range of pregnancy complications. PAPP-A is a protease of IGFBP-4 and -5 that is produced by the placenta [15] and circulates in the maternal blood at high levels during pregnancy. Abnormally low levels of PAPP-A in the first trimester have frequently been associated with increased risk of PE and IUGR [16]. Pregnancy-associated plasma protein-A2 (PAPP-A2) shares 45% amino acid identity with PAPP-A, cleaves IGFBP-5 but not IGFBP-4, and is also produced by the syncytiotrophoblast and released into the maternal circulation during pregnancy [17]. PAPP-A2 levels in the placenta and maternal circulation are higher at term in preeclamptic pregnancies and pregnancies with severe fetal growth restriction [18-21], and PAPP-A2 levels are also elevated in the first-trimester maternal serum of pregnancies that subsequently develop preeclampsia [22].

The mechanistic links between circulating pappalysin levels and pregnancy complications, and whether altered pappalysin expression plays a causal role in placental pathologies, remain unknown. However, whatever role the pappalysins play in placental development and physiology likely involves their IGFBP substrates, IGFBP-4 and -5. While IGFBP-1 is the most abundant IGFBP within the maternal decidua [23] and is relatively well-studied, the roles of IGFBP-4 and -5 in placental development have received little attention.

The purpose of this study was to investigate whether the pappalysins might influence EVT migration and invasion through effects on IGF availability and/or other actions of the IGFBPs. We employed a well-established model of first trimester EVT to examine the effects of exogenous IGFBP-4 and -5 on the migration-stimulating effects of IGF-I and IGF-II. We focused primarily on the inhibition of the migration, but also tested for potentiation and IGF-independent effects. The IGFBPs are known to be expressed in the maternal decidua [23] and therefore

are well positioned to regulate EVT invasion. However, to examine whether IGFBP-4 and -5 might also regulate processes within the villi, we examined the expression of these binding proteins in first-trimester villi using immunohistochemistry.

Methods

Cell lines and cell culture

HTR-8/SVneo cells, an immortalized cell line that is a well-established model of first trimester human trophoblasts, were obtained from Dr. Charles Graham (Queen's University, Kingston, ON, Canada) [24,25]. Cells were cultured in RPMI 1640 medium supplemented with 10% fetal bovine serum, 100 U/mL of penicillin, and 100 U/mL of streptomycin at 37°C in a humidified atmosphere of 5% CO₂. Cell culture media and reagents were purchased from Life Technologies (Burlington, ON, Canada).

HTR-8/SVneo cell wounding assay

HTR-8/SVneo cells were seeded at a density of 40,000 cells per well in 24-well polystyrene tissue culture plates and allowed to grow to confluence before serum starving for at least 4 hours. Wounding was performed with a 20 µL pipette tip across the horizontal midsection of each well, and photographs were taken at two points along each wound. The XY coordinates of each point were saved using Simple PCI coordinate mapping software and photographed again 24 hours after treatment (described below). The percentage wound closure was calculated as $(1 - (\text{area of wound at 24 hours} / \text{area of wound at time 0})) \times 100\%$, as quantified using ImageJ software (see Additional file 1: Figure S1). Recombinant human IGF-I, IGF-II, IGFBP-4 and IGFBP-5 were purchased from R&D Systems (Minneapolis, Minnesota). A dose response experiment ranging from 2–25 nM IGF-I or -II established that 2 nM was sufficient to generate a significant increase in migration of HTR-8/SVneo cells. Dosage in the range of 1–25 nM IGFBP-4 or -5 was expected to have inhibitory effects based on the literature [26] and preliminary experiments. Migration experiments examining the stimulatory effects of the IGFs were performed by treating HTR-8/SVneo cells for 24 hours with either 2 nM IGF-I or IGF-II. Migration experiments examining the inhibitory effects of the IGFBPs were performed by co-treating HTR-8/SVneo cells with either 20 nM IGFBP-4 or IGFBP-5, and one of the two IGFs at 2 nM. Experiments examining IGF-I potentiating effects of low doses of IGFBP-5 were performed across a range of concentrations from equimolar amounts of IGF-I and IGFBP-5, to an 8 fold excess of IGF-I against IGFBP-5 based on previous work with IGFBP-1 [27,28]. Potentiating effects of IGFBP-4 were not investigated because we know of no evidence that IGFBP-4 has IGF-potentiating effects in other systems [29]. Preliminary experiments examining

potential IGF-independent effects of 20 nM IGFBP-4 or 20 nM IGFBP-5 were also performed.

Immunohistochemistry

Human placental tissue was collected from elective terminations of pregnancies between 5 and 13 weeks of gestation. Sections from a total of 6 different placentae were used. Upon collection, samples were fixed overnight in 4% paraformaldehyde, paraffin-embedded, sectioned (4–5 μm) and mounted. Sections were deparaffinized in xylene and rehydrated with a graded series of alcohol. Antigen retrieval was performed by heating sections in 10 mM citrate buffer for 30 min. Immunohistochemical staining was performed using a horseradish peroxidase-3-amino-9-ethylcarbazole (HRP-AEC) goat kit (R&D Systems) according to the manufacturer's instructions. Adjacent sections were incubated with primary polyclonal anti-human antibodies against one of cluster of differentiation 31 (CD31), PAPP-A2, IGFBP-4 or IGFBP-5, all of which were raised in goat (R&D Systems). Immunoreactivity was visualized with AEC and sections were counterstained with hematoxylin. Negative controls were prepared using non-specific goat immunoglobulin G (IgG; R&D Systems) in place of primary antibodies. The use of these samples was approved by the University of British Columbia Children's and Women's Research Ethics Board, the Mount Sinai Hospital Research Ethics Board and the Simon Fraser University Research Ethics Board.

Statistical analyses

Effects of treatments were analyzed in JMP (ver. 10; SAS Institute Inc.) using a general linear model including the effects of treatment and date of experiment. Treatment replicates were distributed across different experimental dates, with replication both within and between days. All experiments contained the appropriate controls (controls, and IGF-I and/or -II alone) to allow for comparison across dates (with similar sample sizes for treatments performed on the same day).

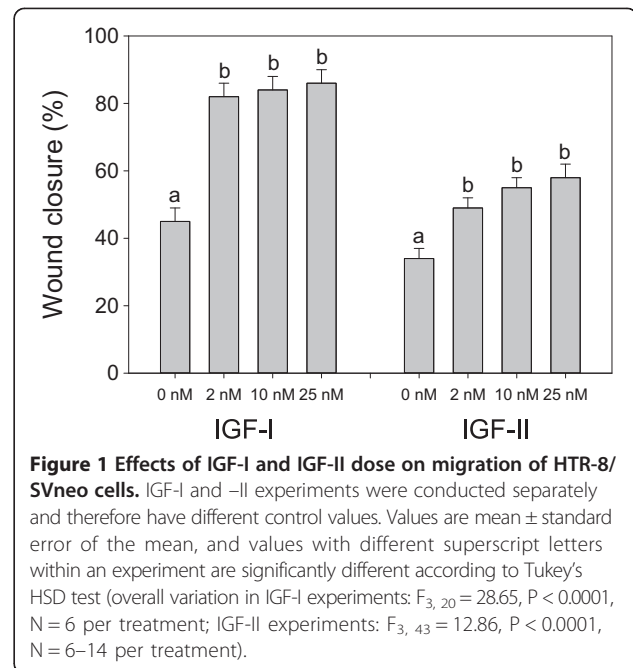
Results

IGF-I, IGF-II and HTR-8/SVneo migration

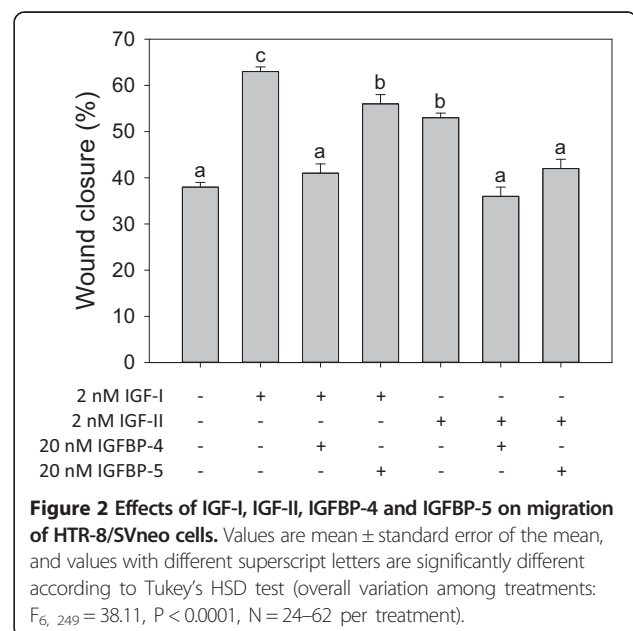
Preliminary experiments with 2 nM, 10 nM or 25 nM of either IGF-I or IGF-II showed a significant stimulatory effect of 2 nM on HTR-8/SVneo cells (Figure 1). Treating HTR-8/SVneo cells with either IGF-I or IGF-II at 2 nM significantly increased migration compared with controls, with IGF-I increasing migration significantly more than IGF-II (Figure 2).

IGFBP-4, IGFBP-5 inhibit effects of IGF-I and IGF-II on HTR-8/SVneo migration

While IGFBP-4 and -5 both significantly reduced the effects of 2 nM IGF-I, 20 nM IGFBP-4 almost completely



blocked the effects of 2 nM IGF-I, whereas 20 nM IGFBP-5 did not (Figure 2). While 2 nM IGF-I increased wound closure to 63%, co-treatment with 20 nM IGFBP-4 reduced wound closure to 41% compared with 38% in controls, but co-treatment with 20 nM IGFBP-5 had a lesser effect, reducing IGF-I-mediated wound closure to an intermediate level (56%). Either 20 nM IGFBP-4 or 20 nM IGFBP-5 completely blocked the effects of 2 nM IGF-II (Figure 2). The migration-stimulating effects



of IGF-II (wound closure 53%) were completely blocked by 20 nM IGFBP-4 (wound closure 36%) or 20 nM IGFBP-5 (wound closure 42%); neither IGFBP treatment was significantly different from controls (38%). There was no significant effect of IGFBP-4 or IGFBP-5 alone at 20 nM in preliminary experiments, suggesting an absence of IGF-independent effects (data not shown). Moreover, there was no significant potentiation effect of low doses of IGFBP-5 with 2 nM IGF-I (Figure 3).

Immunoreactivity for IGFBP-4, IGFBP-5 and PAPP-A2 in the syncytiotrophoblast

The presence of IGFBP-4, IGFBP-5 and PAPP-A2 was examined in serial sections of placental villi at 5, 6, 7 and 13 weeks of gestation. In addition to the non-specific goat IgG negative control, staining against CD31 was used as a negative control for immunoreactivity in the syncytiotrophoblast, since staining was only expected in the endothelium of fetal vessels. Across all gestational ages, IGFBP-4 and -5 showed localization within the syncytiotrophoblast, with stronger immunoreactivity observed for IGFBP-4 than IGFBP-5 (Figure 4). IGFBP-4 and -5 also appeared in the chorionic mesoderm. PAPP-A2 in contrast, showed little to no immunoreactivity in the chorionic mesoderm at 5 and 6 weeks, but did show strong immunoreactivity in the syncytiotrophoblast (Figure 4).

Discussion

To investigate the potential mechanism underlying the associations between levels of PAPP-A and PAPP-A2 and pregnancy complications such as PE and IUGR, we studied the effects of pappalysin substrates IGFBP-4

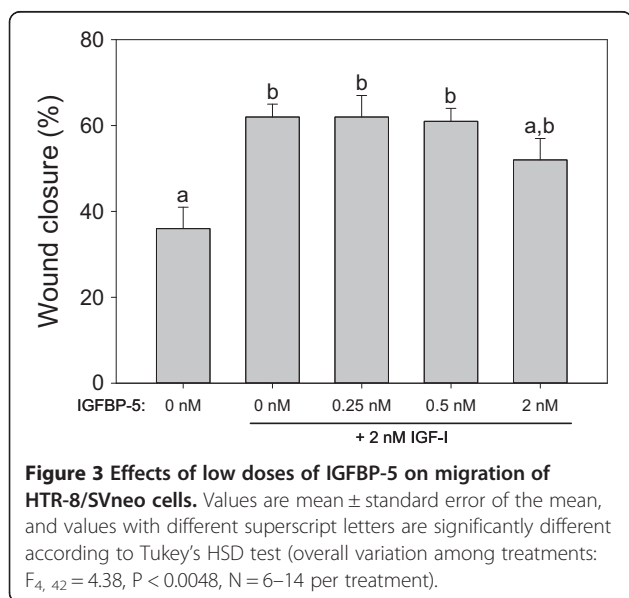
and -5 on IGF-I and -II in a model of EVT migration. We also examined the location and timing of IGFBP-4 and -5 expression to determine whether the pappalysins might also influence processes occurring within the villi early in pregnancy.

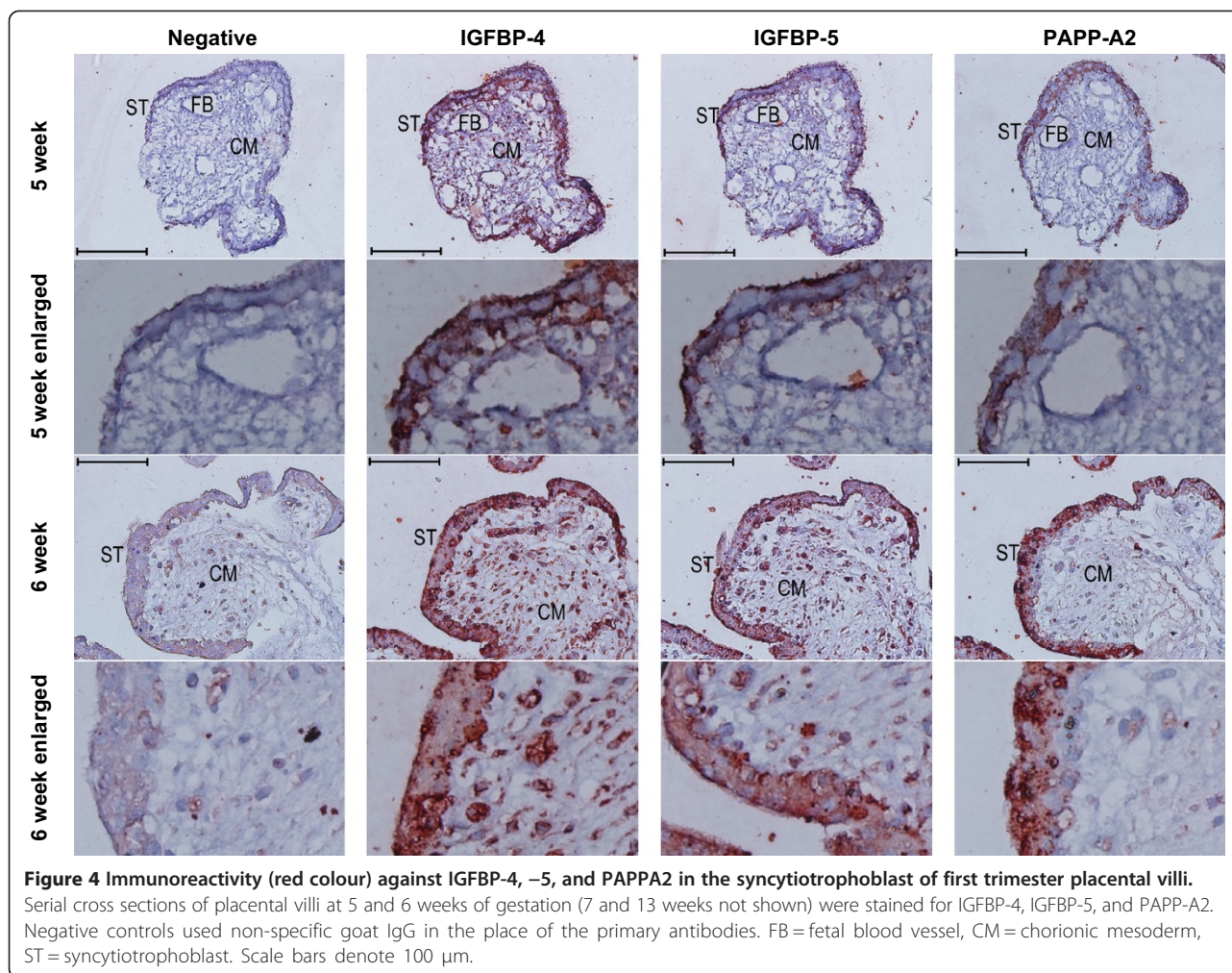
Consistent with previous findings in various models of first trimester human EVT [30-36], both IGF-I and IGF-II at 2 nM significantly stimulated migration of HTR-8/SVneo cells in a cell-wounding assay. Furthermore, IGF-I had greater stimulatory effects than IGF-II at this concentration. The difference in effects of IGF-I and -II may be due to the presence of both type 1 and type 2 IGF receptors (IGF1R and IGF2R) in HTR-8/SVneo cells [26,36], and the higher binding affinity of IGF1R for IGF-I than for IGF-II [37].

IGFBP-4 and -5 showed different levels of IGF inhibition. IGFBP-4 was able to block the migration-stimulating effects of both IGF-I and IGF-II to control levels. In contrast, IGFBP-5 was able to inhibit the migration-stimulating effects of IGF-II to control levels, but only partially inhibited IGF-I. While previous work has shown IGFBP-5 blocks IGF-II stimulation of migration in a cell line model of EVT [26], this is to our knowledge the first data regarding the effects of exogenous IGFBP-4 on trophoblast migration. IGFBP-4 has however been found to influence migration and invasion in cancer studies, with inhibitory or stimulatory effects on migration depending on the model examined [38-42]. Similarly, the effects of IGFBP-5 on cellular proliferation and invasion in breast cancer studies appear to be cell line dependent [43]. The inhibitory effect of IGFBP-4 on trophoblast migration may, at least in part, underlie the association between elevated circulating levels of IGFBP-4 in early pregnancy and the subsequent development of fetal growth restriction [44].

There was no evidence of potentiation of the effects of IGF-I by low doses of IGFBP-5, either because no such effect exists *in vivo*, or because IGF potentiation requires interaction between IGFBP-5 and the extracellular matrix [45]. Similarly, the lack of IGF-independent effects of IGFBP-4 or -5 in our experiments may be due to a real absence of effects *in vivo*, to the absence of as-yet-uncharacterized cell surface IGFBP-4 and -5 receptors in HTR-8/SVneo cells [29], or to a requirement for interaction with the extracellular matrix [45] or proteolysis of the IGFBPs [12,14].

IGF-I and -II have different primary sources in the placenta. IGF-II is strongly expressed by EVT and syncytiotrophoblast in the human placenta [3,4,23], whereas the predominant source of IGF-I in the placenta is the maternal circulation, as it is only weakly expressed by the placenta [4,23]. Low levels of IGF-I mRNA relative to IGF-II mRNA have been detected in the cytotrophoblast, mesodermal core and endothelium of human placental





villi (in first, second and third trimesters), but not in EVT [30,46,47]. IGF-I has been detected less consistently at the protein level. In one study, IGF-I protein was undetectable in human placental lysates [48], and in another IGF-I protein was detected in first trimester villous cytotrophoblasts, but at much lower levels than IGF-II [47].

A number of observations from previous work and this study suggest that PAPP-A and PAPP-A2 play very different roles in normal placental development and disease, which may explain why PAPP-A and PAPP-A2 show contrasting levels in relation to adverse pregnancy outcomes (i.e., PAPP-A being down-regulated and PAPP-A2 being upregulated in association with pregnancy complications [16]). PAPP-A is a protease of both IGFBP-4 and IGFBP-5, whereas PAPP-A2 only proteolyzes IGFBP-5. Therefore our data suggest that PAPP-A2 has less of a stimulatory effect on EVT migration than PAPP-A, as IGFBP-5 shows less inhibition of IGF-I, which is more potent than IGF-II. Furthermore, PAPP-A may have a

stronger effect modulating the availability of IGF-I from the maternal circulation than PAPP-A2.

PAPP-A and PAPP-A2 are expressed by the syncytiotrophoblast as well as invasive EVT [49,50]. It was previously thought that the only location of expression of IGFBP-4 and -5 in the first trimester was the maternal decidua, since IGFBP-5 had only been observed in villi in the second and third trimester [23]. More recently, IGFBP-4 immunoreactivity has been observed in the chorionic mesoderm of placental villi at 10–13 weeks [44]. Here, we show that IGFBP-4 and -5 are present in the syncytiotrophoblast of placental villi as early as 5 weeks of gestation. PAPP-A and PAPP-A2 may therefore influence aspects of early placental development in addition to the EVT invasion of the decidua and remodeling of the spiral arteries, e.g., cytotrophoblast proliferation or fusion with the syncytiotrophoblast. While we do not know whether the placentae we sampled were from pregnancies that would have gone on to develop pregnancy complications, we observed consistent results in

6 different placentae, 3 of which were at a gestational age of 7 weeks or less. It is very unlikely that none of these early placentae were from a healthy, uncomplicated pregnancy.

Conclusions

IGFBP-4 and -5 have differing effects on IGF-I and -II in an *in vitro* model of EVT migration. Given that PAPP-A and PAPP-A2 show contrasting patterns of regulation in adverse pregnancy outcomes, we propose that the stimulatory effects of PAPP-A2 on EVT migration may be less than those of PAPP-A, and that PAPP-A2 may function principally to modulate IGF-II produced locally in the placenta via its effects on IGFBP-5. Moreover, given the lack of IGF-independent and potentiating effects of the pappalysin substrates, we propose that the effects of the pappalysins are principally stimulatory on migration. This hypothesis suggests that low PAPP-A levels in early pregnancy may contribute to placental pathology, whereas high PAPP-A2 levels in pregnancies that go on to develop complications may represent a compensatory response [51,52].

Additional file

Additional file 1: Figure S1. HTR-8/SVneo cell wounding assay.

Abbreviations

AEC: 3-amino-9-ethylcarbazole; CD31: Cluster of differentiation 31; EVT: Extravillous trophoblast; HRP: Horseradish peroxidase; IGF: Insulin-like growth factor; IGF1R: Insulin-like growth factor 1 receptor; IGF2R: Insulin-like growth factor 2 receptor; IGFBP: Insulin-like growth factor binding protein; IgG: Immunoglobulin G; IUGR: Intrauterine growth restriction; PAPP-A: Pregnancy-associated plasma protein-A; PE: Preeclampsia.

Competing interests

The authors declare that they have no competing interests.

Authors' contributions

EJC performed all cell culture work and statistical analyses and drafted the manuscript. CED and AGB provided guidance with methodology, prepared sections for immunohistochemistry, and provided comments on the manuscript. JKC conceived of the study, participated in its design, performed the immunohistochemistry, and helped to draft the manuscript. All authors read and approved the final manuscript.

Acknowledgements

This work was supported by a Canadian Institutes of Health Research Master's Award (Frederick Banting and Charles Best Canada Graduate Scholarships), Simon Fraser University (SFU) graduate fellowships and a Phyllis Carter Burr Scholarship to EJC, and SFU Vice-President, Research, Bridging and NSERC Discovery Grants to JKC. We thank Dr. Gordon Rintoul for the use of his cell culture facilities at Simon Fraser University, Pavel Ogay for laboratory assistance, and Bryce Pasqualotto, Lubna Nadeem, Bo Peng and Tim Beischlag for advice and guidance. This paper is dedicated to the memory of Dr. Andrée Gruslin, who provided guidance and mentorship in this and so much of our other work.

Author details

¹Biological Sciences, Simon Fraser University, V5A 1S6 Burnaby, Canada. ²Research Centre for Women's and Infants Health, Lunenfeld Tanenbaum Research Institute, Mount Sinai Hospital, Toronto, Canada. ³Department of Obstetrics and Gynecology, The University of British Columbia, Vancouver, Canada. ⁴The Child and Family Research Institute, Vancouver, Canada.

Received: 8 October 2014 Accepted: 26 November 2014
Published: 4 December 2014

References

- Knofler M: Critical growth factors and signalling pathways controlling human trophoblast invasion. *Int J Dev Biol* 2010, **54**:269–280.
- Redman CW, Sargent IL: Latest advances in understanding preeclampsia. *Science* 2005, **308**:1592–1594.
- Nayak NR, Giudice LC: Comparative biology of the IGF system in endometrium, decidua, and placenta, and clinical implications for foetal growth and implantation disorders. *Placenta* 2003, **24**:281–296.
- Sferruzzi-Perri AN, Owens JA, Pringle KG, Roberts CT: The neglected role of insulin-like growth factors in the maternal circulation regulating fetal growth. *J Physiol* 2011, **589**:7–20.
- Murphy LJ: Insulin-like growth factor-binding proteins: functional diversity or redundancy? *J Mol Endocrinol* 1998, **21**:97–107.
- Baxter RC: Insulin-like growth factor (IGF)-binding proteins: interactions with IGFs and intrinsic bioactivities. *Am J Physiol Endocrinol Metab* 2000, **278**:E967–E976.
- Bunn RC, Fowlkes JL: Insulin-like growth factor binding protein proteolysis. *Trends Endocrinol Metab* 2003, **14**:176–181.
- Bowman CJ, Streck RD, Chapin RE: Maternal-Placental Insulin-Like Growth Factor (IGF) Signaling and its Importance to Normal Embryo-Fetal Development. *Birth Defects Res B Dev Reprod Toxicol* 2010, **89**:339–349.
- Wheatcroft SB, Kearney MT: IGF-dependent and IGF-independent actions of IGF-binding protein-1 and-2: implications for metabolic homeostasis. *Trends Endocrinol Metab* 2009, **20**:153–162.
- Gleeson LM, Chakraborty C, McKinnon T, Lala PK: Insulin-like growth factor-binding protein 1 stimulates human trophoblast migration by signaling through alpha 5 beta 1 integrin via mitogen-activated protein kinase pathway. *J Clin Endocrinol Metab* 2001, **86**:2484–2493.
- Forbes K, Souquet B, Garside R, Aplin JD, Westwood M: Transforming Growth Factor-beta (TGF beta) Receptors I/II Differentially Regulate TGF beta 1 and IGF-Binding Protein-3 Mitogenic Effects in the Human Placenta. *Endocrinology* 2010, **151**:1723–1731.
- Mazerbourg S, Callebaut I, Zapf J, Mohan S, Overgaard M, Monget P: Update on IGFBP-4: regulation of IGFBP-4 levels and functions, in vitro and in vivo. *Growth Hormon IGF Res* 2004, **14**:71–84.
- Zadeh SM, Binoux M: The 16-kDa proteolytic fragment of insulin-like growth factor (IGF) binding protein-3 inhibits the mitogenic action of fibroblast growth factor on mouse fibroblasts with a targeted disruption of the type 1 IGF receptor gene. *Endocrinology* 1997, **138**:3069–3072.
- Andress DL, Loop SM, Zapf J, Kiefer MC: Carboxy-truncated insulin-like growth factor binding protein-5 stimulates mitogenesis in osteoblast-like cells. *Biochem Biophys Res Commun* 1993, **195**:25–30.
- Giudice LC, Conover CA, Bale L, Faessen GH, Ilg K, Sun I, Imani B, Suen LF, Irwin JC, Christiansen M, Overgaard MT, Oxvig C: Identification and regulation of the IGFBP-4 protease and its physiological inhibitor in human trophoblasts and endometrial stroma: Evidence for paracrine regulation of IGF-II bioavailability in the placental bed during human implantation. *J Clin Endocrinol Metab* 2002, **87**:2359–2366.
- Christians JK, Gruslin A: Altered levels of insulin-like growth factor binding protein proteases in preeclampsia and intrauterine growth restriction. *Prenat Diagn* 2010, **30**:815–820.
- Overgaard MT, Boldt HB, Laursen LS, Sottrup-Jensen L, Conover CA, Oxvig C: Pregnancy-associated plasma protein-A2 (PAPP-A2), a novel insulin-like growth factor-binding protein-5 proteinase. *J Biol Chem* 2001, **276**:21849–21853.
- Macintire K, Tuohey L, Ye L, Palmer K, Gantier M, Tong S, Kaitu'u-Lino TJ: PAPP2 is increased in severe early onset pre-eclampsia and upregulated with hypoxia. *Reprod Fertil Dev* 2014, **26**:351–357.
- Paiva P, Whitehead C, Saglam B, Palmer K, Tong S: Measurement of mRNA Transcripts of Very High Placental Expression in Maternal Blood as Biomarkers of Preeclampsia. *J Clin Endocrinol Metab* 2011, **96**:E1807–E1815.
- Varkonyi T, Nagy B, Fule T, Tarca AL, Karaszi K, Schoenleber J, Hupuczki P, Mihalik N, Kovalszky I, Rigo J, Meiri H, Papp Z, Romero R, Than NG: Microarray Profiling Reveals That Placental Transcriptomes of Early-onset HELLP Syndrome and Preeclampsia Are Similar. *Placenta* 2011, **32**:S21–S29.
- Whitehead CL, Walker SP, Ye L, Mendis S, Kaitu'u-Lino TJ, Lappas M, Tong S: Placental Specific mRNA in the Maternal Circulation Are Globally

- Dysregulated in Pregnancies Complicated by Fetal Growth Restriction. *J Clin Endocrinol Metab* 2013, **98**:E429–E436.
22. Crosley EJ, Durland U, Seetharam K, Macrae S, Gruslin A, Christians JK: First-Trimester Levels of Pregnancy-Associated Plasma Protein A2 (PAPP-A2) in the Maternal Circulation Are Elevated in Pregnancies That Subsequently Develop Preeclampsia. *Reprod Sci* 2014, **21**:754–760.
 23. Han VKM, Carter AM: Spatial and temporal patterns of expression of messenger RNA for insulin-like growth factors and their binding proteins in the placenta of man and laboratory animals. *Placenta* 2000, **21**:289–305.
 24. Graham CH, Hawley TS, Hawley RG, Macdougall JR, Kerbel RS, Khoo N, Lala PK: Establishment and Characterization of 1st Trimester Human Trophoblast Cells with Extended Life-Span. *Exp Cell Res* 1993, **206**:204–211.
 25. Hannan NJ, Paiva P, Dimitriadis E, Salamonsen LA: Models for study of human embryo implantation: choice of cell lines? *Biol Reprod* 2010, **82**:235–245.
 26. Lee BPL, Rushlow WJ, Chakraborty C, Lala PK: Differential gene expression in premalignant human trophoblast: Role of IGFBP-5. *Int J Cancer* 2001, **94**:674–684.
 27. Tsuboi R, Shi CM, Sato C, Cox GN, Ogawa H: Co-administration of insulin-like growth factor (IGF)-I and IGF-binding protein-1 stimulates wound healing in animal models. *J Invest Dermatol* 1995, **104**:199–203.
 28. Yu J, Iwashita M, Kudo Y, Takeda Y: Phosphorylated insulin-like growth factor (IGF)-binding protein-1 (IGFBP-1) inhibits while non-phosphorylated IGFBP-1 stimulates IGF-I-induced amino acid uptake by cultured trophoblast cells. *Growth Hormon IGF Res* 1998, **8**:65–70.
 29. Mohan S, Nakao Y, Honda Y, Landale E, Leser U, Dony C, Lang K, Baylink DJ: Studies on the mechanisms by which insulin-like growth factor (IGF) binding protein-4 (IGFBP-4) and IGFBP-5 modulate IGF actions in bone cells. *J Biol Chem* 1995, **270**:20424–20431.
 30. Lacey H, Haigh T, Westwood M, Aplin JD: Mesenchymally-derived insulin-like growth factor 1 provides a paracrine stimulus for trophoblast migration. *BMC Dev Biol* 2002, **2**:5.
 31. Aplin JD, Lacey H, Haigh T, Jones CJ, Chen CP, Westwood M: Growth factor-extracellular matrix synergy in the control of trophoblast invasion. *Biochem Soc Trans* 2000, **28**:199–202.
 32. Kabir-Salmani M, Shiokawa S, Akimoto Y, Sakai K, Iwashita M: The role of alpha(5)beta(1)-integrin in the IGF-I-induced migration of extravillous trophoblast cells during the process of implantation. *Mol Hum Reprod* 2004, **10**:91–97.
 33. Irving JA, Lala PK: Functional-Role of Cell-Surface Integrins on Human Trophoblast Cell-Migration - Regulation by Tgf-Beta, Igf-Ii, and Igfbp-1. *Exp Cell Res* 1995, **217**:419–427.
 34. Hamilton GS, Lysiak JJ, Han VKM, Lala PK: Autocrine-paracrine regulation of human trophoblast invasiveness by insulin-like growth factor (IGF)-II and IGF-binding protein (IGFBP)-1. *Exp Cell Res* 1998, **244**:147–156.
 35. Qiu Q, Basak A, Mbikay M, Tsang BK, Gruslin A: Role of pro-IGF-II processing by proprotein convertase 4 in human placental development. *Proc Natl Acad Sci U S A* 2005, **102**:11047–11052.
 36. McKinnon T, Chakraborty C, Gleeson LM, Chidiac P, Lala PK: Stimulation of human extravillous trophoblast migration by IGF-II is mediated by IGF type 2 receptor involving inhibitory G protein(s) and phosphorylation of MAPK. *J Clin Endocrinol Metab* 2001, **86**:3665–3674.
 37. Stewart CE, Rotwein P: Growth, differentiation, and survival: multiple physiological functions for insulin-like growth factors. *Physiol Rev* 1996, **76**:1005–1026.
 38. Ueno K, Hirata H, Majid S, Tabatabai ZL, Hinoda Y, Dahiya R: IGFBP-4 activates the Wnt/beta-catenin signaling pathway and induces M-CAM expression in human renal cell carcinoma. *Int J Cancer* 2011, **129**:2360–2369.
 39. Culouscou JM, Shoyab M: Purification of a colon cancer cell growth inhibitor and its identification as an insulin-like growth factor binding protein. *Cancer Res* 1991, **51**:2813–2819.
 40. Damon SE, Maddison L, Ware JL, Plymate SR: Overexpression of an inhibitory insulin-like growth factor binding protein (IGFBP), IGFBP-4, delays onset of prostate tumor formation. *Endocrinology* 1998, **139**:3456–3464.
 41. Diehl D, Hoeflich A, Wolf E, Lahm H: Insulin-like growth factor (IGF)-binding protein-4 inhibits colony formation of colorectal cancer cells by IGF-independent mechanisms. *Cancer Res* 2004, **64**:1600–1603.
 42. Huang J, Tabata S, Kakiuchi S, Van The T, Goto H, Hanibuchi M, Nishioka Y: Identification of pregnancy-associated plasma protein A as a migration-promoting gene in malignant pleural mesothelioma cells: a potential therapeutic target. *Oncotarget* 2013, **4**:1172–1184.
 43. Beattie J, Allan GJ, Lochrie JD, Flint DJ: Insulin-like growth factor-binding protein-5 (IGFBP-5): a critical member of the IGF axis. *Biochem J* 2006, **395**:1–19.
 44. Qiu Q, Bell M, Lu X, Yan X, Rodger M, Walker M, Wen S, Bainbridge S, Wang H, Gruslin A: Significance of IGFBP-4 in the Development of Fetal Growth Restriction. *J Clin Endocrinol Metab* 2012, **97**:E1429–E1439.
 45. Jones JL, Gockerman A, Busby WH Jr, Camacho-Hubner C, Clemmons DR: Extracellular matrix contains insulin-like growth factor binding protein-5: potentiation of the effects of IGF-I. *J Cell Biol* 1993, **121**:679–687.
 46. Han VKM, Bassett N, Walton J, Challis JRG: The expression of insulin-like growth factor (IGF) and IGF-binding protein (IGFBP) genes in the human placenta and membranes: Evidence for IGF-IGFBP interactions at the feto-maternal interface. *J Clin Endocrinol Metab* 1996, **81**:2680–2693.
 47. Hu YX, Tan RS, MacCalman CD, Eastabrook G, Park SH, Dutz JP, von Dadelszen P: IFN-gamma-mediated extravillous trophoblast outgrowth inhibition in first trimester explant culture: a role for insulin-like growth factors. *Mol Hum Reprod* 2008, **14**:281–289.
 48. Street ME, Seghini P, Fieni S, Ziveri MA, Volta C, Martorana D, Viani I, Gramellini D, Bernasconi S: Changes in interleukin-6 and IGF system and their relationships in placenta and cord blood in newborns with fetal growth restriction compared with controls. *Eur J Endocrinol* 2006, **155**:567–574.
 49. Wang J, Qiu Q, Haider M, Bell M, Gruslin A, Christians JK: Expression of pregnancy-associated plasma protein A2 during pregnancy in human and mouse. *J Endocrinol* 2009, **202**:337–345.
 50. Nishizawa H, Pryor-Koishi K, Suzuki M, Kato T, Kogo H, Sekiya T, Kurahashi H, Udagawa Y: Increased levels of pregnancy-associated plasma protein-A2 in the serum of pre-eclamptic patients. *Mol Hum Reprod* 2008, **14**:595–602.
 51. Wagner PK, Christians JK: Altered placental expression of PAPP2 does not affect birth weight in mice. *Reprod Biol Endocrinol* 2010, **8**:90.
 52. Wagner PK, Otomo A, Christians JK: Regulation of pregnancy-associated plasma protein A2 (PAPP2) in a human placental trophoblast cell line (BeWo). *Reprod Biol Endocrinol* 2011, **9**:48.

doi:10.1186/1477-7827-12-123

Cite this article as: Crosley et al.: IGFBP-4 and -5 are expressed in first-trimester villi and differentially regulate the migration of HTR-8/SVneo cells. *Reproductive Biology and Endocrinology* 2014 **12**:123.

Submit your next manuscript to BioMed Central and take full advantage of:

- Convenient online submission
- Thorough peer review
- No space constraints or color figure charges
- Immediate publication on acceptance
- Inclusion in PubMed, CAS, Scopus and Google Scholar
- Research which is freely available for redistribution

Submit your manuscript at
www.biomedcentral.com/submit

