

RESEARCH ARTICLE

Open Access

Evidence for a heritable predisposition to Chronic Fatigue Syndrome

Frederick Albright^{1*}, Kathleen Light², Alan Light², Lucinda Bateman³ and Lisa A Cannon-Albright^{4,5}

Abstract

Background: Chronic Fatigue Syndrome (CFS) came to attention in the 1980s, but initial investigations did not find organic causes. Now decades later, the etiology of CFS has yet to be understood, and the role of genetic predisposition in CFS remains controversial. Recent reports of CFS association with the retrovirus xenotropic murine leukemic virus-related virus (XMRV) or other murine leukemia related retroviruses (MLV) might also suggest underlying genetic implications within the host immune system.

Methods: We present analyses of familial clustering of CFS in a computerized genealogical resource linking multiple generations of genealogy data with medical diagnosis data of a large Utah health care system. We compare pair-wise relatedness among cases to expected relatedness in the Utah population, and we estimate risk for CFS for first, second, and third degree relatives of CFS cases.

Results: We observed significant excess relatedness of CFS cases compared to that expected in this population. Significant excess relatedness was observed for both close ($p < 0.001$) and distant relationships ($p = 0.010$). We also observed significant excess CFS relative risk among first (2.70, 95% CI: 1.56-4.66), second (2.34, 95% CI: 1.31-4.19), and third degree relatives (1.93, 95% CI: 1.21-3.07).

Conclusions: These analyses provide strong support for a heritable contribution to predisposition to Chronic Fatigue Syndrome. A population of high-risk CFS pedigrees has been identified, the study of which may provide additional understanding.

Background

The Chronic Fatigue Syndrome (CFS) disease classification attempts to identify patients with a condition distinct from the fatigue of other chronic illness. It is most frequently defined by the Fukuda definition: severe, unexplained, chronic fatigue lasting at least 6 months, accompanied by 4 of 8 symptom criteria (post-exertional malaise, impaired memory or concentration, unrefreshing sleep, muscle pain, arthralgia, headaches, sore throat or, tender cervical or axillary lymph nodes)[1,2]. According to population based studies, 800,000 or more people in the US meet these criteria [3-8] or have CFS like disease [8]. The Center for Disease Control (CDC) posts that the illness costs the US \$9 billion annually in lost earnings and productivity [9,10].

CFS is a complex illness that is not well understood. This applies to the genetic and environmental origins of CFS, as well as factors that may contribute to the severity of symptoms and outcomes. Despite efforts to develop standardized research criteria to define the disease, progress in CFS diagnosis and treatment has been slow, in part due to concurrence in origins, causation, lack of a standard clinical definition, and lack of specific biomarkers. A community-based screening study by the CDC indicated that only 9%-16% of individuals with CFS had been diagnosed. Variations in presentation (age of onset, sudden versus gradual onset, and co-morbid conditions) further increase the heterogeneity of CFS patients. It has been proposed that predisposition to CFS may have a genetic basis, although environmental factors, viral illnesses, stressful life events or traumas may also be implicated [4,6,8,11,12]. CFS has been described as a disorder of the brain, the immune system, or the endocrine system; studies have documented

* Correspondence: frederick.albright@pharm.utah.edu

¹Pharmacotherapy Outcomes Research Center, Department of Pharmacotherapy, College of Pharmacy, University of Utah, USA
Full list of author information is available at the end of the article

underlying pathophysiological processes involving all of these systems [13-18].

There are numerous studies suggesting that genes might play a role in the development of CFS or in its progression [19-21]. Several twin studies have examined genetic vs. environmental determinants of CFS [21-24]. These studies have shown higher concordance in monozygotic vs. dizygotic twins. A small familial aggregation study (CFS cases = 25), showed excess relative risks for CFS in first-degree relatives of CFS cases compared to controls [20].

Analysis of a heritable contribution to CFS is confounded by the newness of the diagnosis, the lack of specific diagnostic criteria or biomarkers, and high rates of co-morbidity with other syndromes. Here we report the existence of a unique, population-based resource with genealogical information linked to diagnosis data allowing analysis of the genetic relationships among 811 individuals diagnosed with CFS since 1993. The combined data have been analyzed to examine the hypothesis of a heritable contribution to CFS.

Methods

The original Utah Population Database (UPDB) represented genealogical records of Utah pioneers and their descendants. The UPDB was created from family group sheets compiled by members of the Church of Jesus Christ of Latter-day Saints (LDS) submitted to the Genealogical Society of Utah. Researchers at the University of Utah computerized these genealogical paper records of Mormon pioneers and their descendants into an electronic database [25].

The original UPDB genealogy represented approximately 1.6 million individuals in genealogies up to 6 generations deep. Genealogical data added since the original derives from state records (birth, death, driver's license and others) entailing 6.5 million individuals. New individuals from these sources who link to the original genealogy data produce pedigrees up to 15 generations deep with 2.3 million individuals belonging to genealogies at least 3 generations deep.

Numerous Utah data sets have been linked to UPDB records, including Utah Cancer Registry (UCR) records. The UPDB has also been linked to individual medical data from the University of Utah Health Sciences Hospital (UUHSH) Enterprise Data Resource Center. The UUHSH Data Warehouse (DW) contains comprehensive hospital, medical, and clinical data from 1993 to present. The UUHSH serves 20% of the state's residents. The UUHSH Data Resource Center currently contains over 1.8 million patient demographic records for patients treated at the hospital and outpatient clinics. Over 1.26 million (73%) of these hospital records have been matched to a "person record" in UPDB.

CFS patients were identified by the presence in the medical record of a CFS-specific ICD-9 diagnostic code (780.71) originating from medical providers involved in the patient's care. Although in other areas of the country the rate of CFS diagnosis may be lower, it is likely that in Utah the appropriate application of the Fukuda definition and diagnosis of CFS increases the rate. This is likely related to the CFS referral clinic in the community, and the availability of CFS-specific Continuing Medical Education to community providers during the last decade. UUHSH has no clinics specifically devoted to CFS, or specialists who claim expertise in CFS.

Although all University of Utah hospital and clinic records have been linked to the UPDB genealogy, only a selected subset of these records can be accessed, due to the sensitive nature of the data. A set of randomly selected hospital patients was identified for use as controls, representing 20% of all University of Utah hospital/clinic patients who also had linked genealogy data ($n \sim 200,000$). We created cohorts to which these UUHSC patients were assigned, and from which controls were selected randomly. All individuals were assigned to 1 of 132 cohorts based on sex, birth-year, and birthplace (i.e., Utah or not). All controls for the analyses performed were selected randomly from this set.

This unique resource allowed us to identify all genetic relationships between patients with a diagnosis of CFS. To examine evidence for a genetic contribution to CFS in the UPDB, two different analyses were performed: estimation of relative risks in close and distant relatives of CFS cases, and comparison of average relatedness in CFS cases to controls.

Relative Risks in Relatives

We estimated relative risk (RR) for CFS among the relatives of patients using the classical odds ratio (OR) method. Although we were able to identify all patients with a diagnosis of CFS, we were only able to identify 20% of all known UUHSC patients in any given cohort, resulting in an inability to estimate true CFS population rates. We therefore selected 5 matched (hospital) controls for each case for RR estimation. Because of the over-representation of cases in each cohort, we excluded cases from selection as controls.

To estimate the RR we compared the number of CFS cases among the relatives of cases to the number of CFS cases among the relatives of 5 independently selected sets of matched UUHSC controls (relatives counted without duplication). Because of the nature of the UPDB resource, and the fact that we identify all genetic relationships between all CFS cases, this study did not require any screening of relatives; we identified all relatives of all cases (and all relatives of matched controls)

using genealogy data, and then counted UUHSC CFS cases who were identified among these relatives. The significance of the test of the null hypothesis $RR = 1.0$ was determined by Fisher's Exact Test for the 2×2 table. Confidence intervals for the RR were estimated as described in Agresti [26]. This method has been applied to other disease phenotypes in the UPDB [27,28].

Genealogical Index of Familiarity (GIF)

We used the Genealogical Index of Familiarity (GIF) statistic to test the hypothesis of no excess relatedness among CFS cases. This statistic, developed for use with the UPDB [29,30], measures the average pair-wise relatedness of a set of individuals, and compares the measure to the average expected relatedness of a set of similar individuals in this population. In contrast to the RR, which examines close relationships between cases, the GIF analysis considers all pair-wise genetic relationships between all cases, and separately for matched controls.

The GIF relatedness measure for a pair of individuals implements the Malécot coefficient of kinship [31], which is defined as the probability that randomly selected homologous genes from the 2 individuals are identical by descent from a common ancestor. For parent/child the coefficient is 0.50 (1/2), for siblings or grandparents the coefficient is 0.25 (1/4), for avunculars the coefficient is 0.125 (1/8), and so forth. The contribution to the GIF statistic is smaller for pairs with a greater genetic distance between them.

The case-GIF statistic is defined as the average of the coefficients of kinship between all possible pairs of CFS cases ($\times 100,000$). A control-GIF statistic is calculated as the average of the coefficients of kinship between all possible pairs in a single set of randomly selected matched controls. Comparison of the average relatedness of a set of cases to the distribution of the average relatedness statistics estimated for 1,000 independent sets of matched controls, provides an empirical test of significance.

Because both close and distant relationships are observed, the GIF statistic will show excess relatedness in the presence of genetic effects only, or environmental (familial, but non-genetic) effects only, or in the presence of a combination of both effects. The overall GIF statistic therefore tests the alternative hypothesis of no excess familial clustering of any origin. We also utilized the GIF test to examine the more specific hypothesis of a genetic contribution. To do this, the GIF statistic was estimated while ignoring all close relationships (relationships with genetic distance < 4 , or closer than first cousins). We term this statistic the distant GIF (dGIF). The dGIF statistic allows a test of the hypothesis that there are significantly more distant pair-wise relationships observed among cases than would be expected,

providing strong support for a familial effect that is based on shared genes.

No patient identifiers were used in this study; analysis of genetic relationships between affected individuals is non-identifiable. The University of Utah Institutional Review Board and the Utah Resource for Genetic and Epidemiological Research (RGE) approved the utilization of UPDB data in this study.

Results and Discussion

We identified 941 patients with a CFS diagnosis in the UUHSC DW from 1993 to present that also had Utah genealogy data. Age at diagnosis was estimated using the minimum admission date for a CFS diagnosis, and thus may be over estimated. Twelve percent of the cases had an age at diagnosis less than age 20 years; 28% of the cases had an age at diagnosis greater than 59 years; 653 (69%) were female. Because CFS is associated with various co-morbid conditions, with possible genetic associations, we excluded the 130 CFS cases that also had a diagnosis of cancer in the UCR. This left 811 CFS cases for analysis.

Relative Risks

Table 1 summarizes the RR estimates risk of CFS among first, second, and third degree relatives of CFS cases. For each degree of relationship considered, Table 1 shows the number of relatives considered (for cases and controls), the number of CFS cases observed among the relatives (for cases and controls), the significance for the Fisher's Exact test, the Odds Ratio (OR) estimate of RR, and the 95% confidence interval for the RR. Relative risks for first ($RR = 2.70$), second ($RR = 2.34$), and third degree ($RR = 1.93$) relatives were significantly elevated.

Genealogical Index of Familiarity

Table 2 shows the results of the GIF test for excess relatedness in the 811 CFS cases, including the average relatedness of the cases, the mean average relatedness for 1000 sets of matched controls, the empirical significance of the overall test for excess relatedness, and the empirical significance of the dGIF. The average relatedness of CFS cases was significantly greater than expected when all relationships were considered ($p < 0.001$),

Table 1 Estimated RRs for first-, second-, and third-degree relatives in the 811 CFS cases

Degree relative	Relatives of: cases / controls	# CFS cases in relatives of: Cases / controls	p-value	RR	95% CI
first	5,573 / 28,965	19 / 37	0.001	2.70	1.56, 4.66
second	15,469 / 80,206	16 / 36	0.008	2.34	1.32, 4.19
third	39,766 / 201,717	24 / 64	0.009	1.93	1.21, 3.07

Table 2 GIF test for excess relatedness among 811 CFS cases

Phenotype	n	Case Average Relatedness	Mean Control Average Relatedness	Empirical p-value GIF	Empirical p-value Distant GIF
CFS	811	3.15	2.31	< 0.001	0.010

showing strong evidence for excess familial clustering (due to either shared environment, or shared genes, or a combination). When close relationships (genetic distance <4) were ignored, the significant excess was still present (p = 0.010). Figure 1 displays the GIF test graphically. It shows the contribution to the GIF statistic (y-axis) by the relationship (x-axis; genetic distance) between all pairs for CFS cases (and controls). This observation of significant excess relationships observed at almost all degrees of relationship strongly supports a genetic contribution to predisposition to CFS.

Conclusions

The existence of a Utah resource combining up to 15 generations of genealogy data with medical diagnosis data from 1993 has allowed testing of the hypothesis of a heritable contribution to CFS. The methods used in this study have previously provided evidence for a heritable component to many diseases, including: prostate cancer, influenza mortality, aneurysm, cancer, rotator cuff disease, asthma mortality, and diabetes, among others [28,32-34]. Studies of Utah high-risk pedigrees identified in the UPDB have lead to the discovery of multiple cancer predisposition genes including *BRCA1*,

BRCA2, *p16*, and *HPC2/ELAC2* [35-38]. The UPDB data analyzed represents a homogeneous population that has been shown to be genetically representative of Northern Europe, with normal U.S. inbreeding levels [39,40].

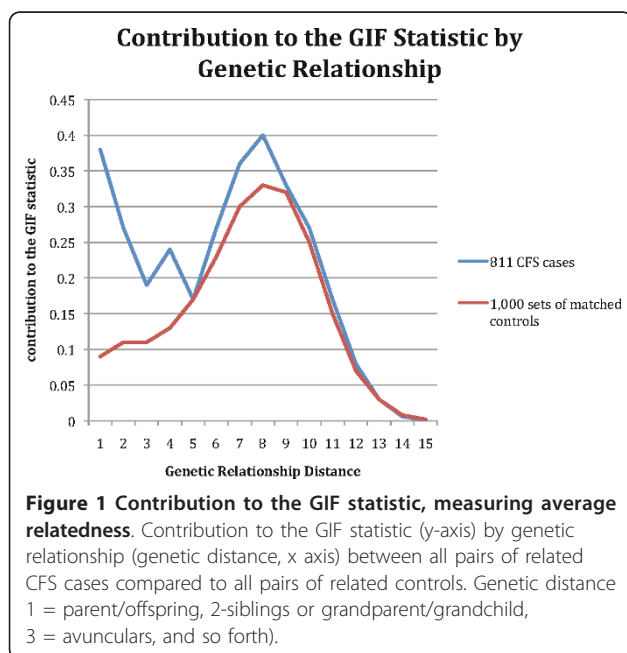
Significantly increased risks among first degree relatives are often referred to as providing evidence for a “genetic” contribution to disease. However, given the sharing among close relatives of their genes, lifestyle, and environment, increased first degree risk may simply indicate familial clustering, it does not provide evidence for a genetic contribution. However, significant excess risks in second and third degree relatives strongly indicates a genetic contribution to disease, given the much lower likelihood of these relatives sharing common risks and environments.

Analysis of CFS in a large Utah resource shows clear evidence of significant excess familial clustering and significantly elevated risks for CFS among first, second, and third degree relatives of CFS cases. The results strongly support a genetic contribution to predisposition to CFS as it is currently defined and diagnosed by clinicians in Utah. Although a genetic predisposition to CFS has been suggested in the literature, this is the first population-based analysis to comprehensively support this claim.

This study used a uniform, consistent source for all diagnoses, and is not limited by bias introduced by study designs involving selected ascertainment of cases or requiring recall for diagnoses. The most significant limitation of this analysis is the narrow window of view to identify individuals diagnosed with CFS. This results from the relatively short period of time for which this diagnosis has existed, and the limited time-period of diagnosis data available (1993-present). These effects limit our ability to identify cases who might be related across different generations (e.g. grandparent/grandchild or avunculars). Although CFS cases may have been censored from our observation in this resource, cases are uniformly censored across the resource, leading to conservative, but unbiased, estimates of familiarity.

We excluded CFS cases with a cancer diagnosis, which might have been a cause of CFS symptoms in these cases. Other potential confounders could not be considered: including other heritable predisposing conditions (e.g., depression), or risk factors that are familial, but not genetic (e.g., occupation, socioeconomic factors, or healthcare access).

This study of CFS heritability does not allow determination of the mechanisms that lead to predisposition to CFS. We have identified multiple pedigrees with a significant excess of CFS cases. We propose study of these pedigrees to identify the gene(s) predisposing to CFS, as well as to better understand mechanisms and potential environmental factors and triggers.



Studies reporting an association of CFS with XMRV and MLV-related viruses have provided conflicting results [41-44]. While association of CFS with an infectious-like syndrome at onset is recognized, and many microbial and viral infections have been implicated as possible triggers, no single agent has been associated with a large fraction of cases. It might be hypothesized that a heritable predisposition to virus infection explains both our findings and the complex virus associations that have been recognized.

Identification of CFS predisposition genes, and increased understanding of how these genes affect health could allow identification of predisposed individuals at an earlier age, prophylactic screening for at-risk individuals, improved healthcare standards to reduce risk of CFS development, all leading to identification of treatments or medications that could prevent or delay onset of symptoms in those impaired by this debilitating disease.

Acknowledgements

Support includes R01 NLM009331 (to LACA) and R21 NS057821 (KCL), Partial support for all datasets within the Utah Population Database (UPDB) provided by the University of Utah Huntsman Cancer Institute. The authors also acknowledge support from the Huntsman Cancer Foundation and a University of Utah Catalyst grant.

Author details

¹Pharmacotherapy Outcomes Research Center, Department of Pharmacotherapy, College of Pharmacy, University of Utah, USA. ²Department of Anaesthesiology, University of Utah, USA. ³Fatigue Consultation Clinic, Salt Lake City, UT, USA. ⁴Division of Genetic Epidemiology, Department of Internal Medicine, School of Medicine, University of Utah, USA. ⁵George E. Wahlen Department of Veterans Affairs Medical Center, Salt Lake City, Utah, USA.

Authors' contributions

Each author contributed equally to the development and ensuing research of the project. Each author made significant and substantial written contributions in this manuscript. All authors read and approved the final version of the manuscript.

Competing interests

No authors have any financial involvement or affiliation with any organization whose financial interests may be affected by material in the manuscript or which might potentially bias it.

Received: 18 January 2011 Accepted: 27 May 2011

Published: 27 May 2011

References

- Chronic fatigue Syndrome - The Revised Case Definition (abridged version). [http://www.cdc.gov/cfs/general/case_definition/abridged.html].
- Fukuda K, Straus SE, Hickie I, Sharpe MC, Dobbins JG, Komaroff A: **The chronic fatigue syndrome: a comprehensive approach to its definition and study.** International Chronic Fatigue Syndrome Study Group. *Ann Intern Med* 1994, **121**(12):953-959.
- Jason LA, Benton MC, Valentine L, Johnson A, Torres-Harding S: **The Economic impact of ME/CFS: Individual and societal costs.** *Dyn Med* 2008, **7**:6.
- Jason LA, Richman JA, Rademaker AW, Jordan KM, Plioplys AV, Taylor RR, McCready W, Huang CF, Plioplys S: **A community-based study of chronic fatigue syndrome.** *Arch Intern Med* 1999, **159**(18):2129-2137.
- Jason LA, Taylor R, Wagner L, Holden J, Ferrari JR, Plioplys AV, Plioplys S, Lipkin D, Papernik M: **Estimating rates of chronic fatigue syndrome from a community-based sample: a pilot study.** *Am J Community Psychol* 1995, **23**(4):557-568.
- Jason LA, Taylor RR, Kennedy CL, Song S, Johnson D, Torres S: **Chronic fatigue syndrome: occupation, medical utilization, and subtypes in a community-based sample.** *J Nerv Ment Dis* 2000, **188**(9):568-576.
- Jason LA, Taylor SL: **Monitoring chronic fatigue syndrome.** *J Nerv Ment Dis* 1994, **182**(4):243-244.
- Jason LAT-HS, Njoku MGC: **The face of CFS in the US.** *CFIDS Chronicle* 16-21, The Science 2005-2006.
- Reynolds KJ, Vernon SD, Bouchery E, Reeves WC: **The economic impact of chronic fatigue syndrome.** *Cost Eff Resour Alloc* 2004, **2**(1):4.
- Reyes M, Nisenbaum R, Hoaglin DC, Unger ER, Emmons C, Randall B, Stewart JA, Abbey S, Jones JF, Gantz N, et al: **Prevalence and incidence of chronic fatigue syndrome in Wichita, Kansas.** *Arch Intern Med* 2003, **163**(13):1530-1536.
- Steele L, Dobbins JG, Fukuda K, Reyes M, Randall B, Koppelman M, Reeves WC: **The epidemiology of chronic fatigue in San Francisco.** *Am J Med* 1998, **105**(3A):835-905.
- Boneva RS, Decker MJ, Maloney EM, Lin JM, Jones JF, Helgason HG, Heim CM, Rye DB, Reeves WC: **Higher heart rate and reduced heart rate variability persist during sleep in chronic fatigue syndrome: a population-based study.** *Auton Neurosci* 2007, **137**(1-2):94-101.
- Chapman CR, Tuckett RP, Song CW: **Pain and stress in a systems perspective: reciprocal neural, endocrine, and immune interactions.** *J Pain* 2008, **9**(2):122-145.
- Clear AJ: **The HPA axis and the genesis of chronic fatigue syndrome.** *Trends Endocrinol Metab* 2004, **15**(2):55-59.
- Skowera A, Clear AJ, Blair D, Bevis L, Wessely SC, Peakman M: **High levels of type 2 cytokine-producing cells in chronic fatigue syndrome.** *Clin Exp Immunol* 2004, **135**(2):294-302.
- Light AR, White AT, Hughen RW, Light KC: **Moderate exercise increases expression for sensory, adrenergic, and immune genes in chronic fatigue syndrome patients but not in normal subjects.** *J Pain* 2009, **10**(10):1099-1112.
- White AT, Light AR, Hughen RW, Bateman L, Martins TB, Hill HR, Light KC: **Severity of symptom flare after moderate exercise is linked to cytokine activity in chronic fatigue syndrome.** *Psychophysiology* 2010.
- Hampton T: **Researchers find genetic clues to chronic fatigue syndrome.** *JAMA* 2006, **295**(21):2466-2467.
- Kaiser J: **Biomedicine. Genes and chronic fatigue: how strong is the evidence?** *Science* 2006, **312**(5774):669-671.
- Walsh CM, Zainal NZ, Middleton SJ, Paykel ES: **A family history study of chronic fatigue syndrome.** *Psychiatr Genet* 2001, **11**(3):123-128.
- Buchwald D, Herrell R, Ashton S, Belcourt M, Schmalting K, Sullivan P, Neale M, Goldberg J: **A twin study of chronic fatigue.** *Psychosom Med* 2001, **63**(6):936-943.
- Hickie IB, Bansal AS, Kirk KM, Lloyd AR, Martin NG: **A twin study of the etiology of prolonged fatigue and immune activation.** *Twin Res* 2001, **4**(2):94-102.
- Schur E, Afari N, Goldberg J, Buchwald D, Sullivan PF: **Twin analyses of fatigue.** *Twin Res Hum Genet* 2007, **10**(5):729-733.
- Sullivan PF, Evengard B, Jacks A, Pedersen NL: **Twin analyses of chronic fatigue in a Swedish national sample.** *Psychol Med* 2005, **35**(9):1327-1336.
- Skolnick M: **The Utah genealogical database: A resource for genetic epidemiology.** In *Banbury Report No 4; Cancer Incidence in Defined Populations*. Edited by: Cairns J LJ, Skolnick M. New York: Cold Spring Harbor; 1980:285-297.
- Agresti A: **Categorical Data Analysis.** John Wiley & Sons; 1990.
- Tashjian RZ, Farnham JM, Albright FS, Teerlink CC, Cannon-Albright LA: **Evidence for an inherited predisposition contributing to the risk for rotator cuff disease.** *J Bone Joint Surg Am* 2009, **91**(5):1136-1142.
- Albright FS, Orlando P, Pavia AT, Jackson GG, Cannon Albright LA: **Evidence for a heritable predisposition to death due to influenza.** *J Infect Dis* 2008, **197**(1):18-24.
- Cannon Albright LA: **Utah family-based analysis: past, present and future.** *Hum Hered* 2008, **65**(4):209-220.
- Hill JR: **A survey of cancer sites by kinship in the Utah Mormon population.** In *Banbury Report No 4; Cancer Incidence in Defined Populations*.

Edited by: Cairns J LJ, Skolnick M. New York: Cold Spring Harbor; 1980:299-318.

31. Malécot G: *Les mathématiques de l'hérédité*. Paris: Masson; 1948.
32. Cannon Albright LA, Camp NJ, Farnham JM, MacDonald J, Abtin K, Rowe KG: **A genealogical assessment of heritable predisposition to aneurysms.** *J Neurosurg* 2003, **99**(4):637-643.
33. Teerlink CC, Hegewald MJ, Cannon-Albright LA: **A genealogical assessment of heritable predisposition to asthma mortality.** *Am J Respir Crit Care Med* 2007, **176**(9):865-870.
34. Weires MB, Tausch B, Haug PJ, Edwards CQ, Wetter T, Cannon-Albright LA: **Familiality of diabetes mellitus.** *Exp Clin Endocrinol Diabetes* 2007, **115**(10):634-640.
35. Miki Y, Swensen J, Shattuck-Eidens D, Futreal PA, Harshman K, Tavtigian S, Liu Q, Cochran C, Bennett LM, Ding W, et al: **A strong candidate for the breast and ovarian cancer susceptibility gene BRCA1.** *Science* 1994, **266**(5182):66-71.
36. Kamb A, Shattuck-Eidens D, Eeles R, Liu Q, Gruis NA, Ding W, Hussey C, Tran T, Miki Y, Weaver-Feldhaus J, et al: **Analysis of the p16 gene (CDKN2) as a candidate for the chromosome 9p melanoma susceptibility locus.** *Nat Genet* 1994, **8**(1):23-26.
37. Tavtigian SV, Simard J, Rommens J, Couch F, Shattuck-Eidens D, Neuhausen S, Merajver S, Thorlacius S, Offit K, Stoppa-Lyonnet D, et al: **The complete BRCA2 gene and mutations in chromosome 13q-linked kindreds.** *Nat Genet* 1996, **12**(3):333-337.
38. Tavtigian SV, Simard J, Teng DH, Abtin V, Baumgard M, Beck A, Camp NJ, Carillo AR, Chen Y, Dayananth P, et al: **A candidate prostate cancer susceptibility gene at chromosome 17p.** *Nat Genet* 2001, **27**(2):172-180.
39. Jorde LB: **Inbreeding in the Utah Mormons: an evaluation of estimates based on pedigrees, isonymy, and migration matrices.** *Ann Hum Genet* 1989, **53**(Pt 4):339-355.
40. McLellan T, Jorde LB, Skolnick MH: **Genetic distances between the Utah Mormons and related populations.** *Am J Hum Genet* 1984, **36**(4):836-857.
41. Erlwein O, Kaye S, McClure MO, Weber J, Wills G, Collier D, Wessely S, Cleare A: **Failure to detect the novel retrovirus XMRV in chronic fatigue syndrome.** *PLoS ONE* 2010, **5**(1):e8519.
42. Lo SC, Pripuzova N, Li B, Komaroff AL, Hung GC, Wang R, Alter HJ: **Detection of MLV-related virus gene sequences in blood of patients with chronic fatigue syndrome and healthy blood donors.** *Proc Natl Acad Sci USA* 2010.
43. Lombardi VC, Ruscetti FW, Das Gupta J, Pfof MA, Hagen KS, Peterson DL, Ruscetti SK, Bagni RK, Petrow-Sadowski C, Gold B, et al: **Detection of an infectious retrovirus, XMRV, in blood cells of patients with chronic fatigue syndrome.** *Science* 2009, **326**(5952):585-589.
44. Switzer WM, Jia H, Hohn O, Zheng H, Tang S, Shankar A, Bannert N, Simmons G, Hendry RM, Falkenberg VR, et al: **Absence of evidence of xenotropic murine leukemia virus-related virus infection in persons with chronic fatigue syndrome and healthy controls in the United States.** *Retrovirology* 2010, **7**:57.

Pre-publication history

The pre-publication history for this paper can be accessed here:
<http://www.biomedcentral.com/1471-2377/11/62/prepub>

doi:10.1186/1471-2377-11-62

Cite this article as: Albright et al.: Evidence for a heritable predisposition to Chronic Fatigue Syndrome. *BMC Neurology* 2011 **11**:62.

Submit your next manuscript to BioMed Central and take full advantage of:

- Convenient online submission
- Thorough peer review
- No space constraints or color figure charges
- Immediate publication on acceptance
- Inclusion in PubMed, CAS, Scopus and Google Scholar
- Research which is freely available for redistribution

Submit your manuscript at
www.biomedcentral.com/submit

