



# Correction to: War-Affected South Sudanese in Settings of Preflight, Flight, and Resettlement: a Systematic Review and Meta-analysis of Trauma-Associated Mental Disorders

Nhial T. Tutlam<sup>1</sup> · Jen Jen Chang<sup>2</sup> · William Byansi<sup>3</sup> · Louise H. Flick<sup>2</sup> · Fred M. Ssewamala · Theresa S. Betancourt<sup>3</sup>

© Springer Nature Switzerland AG 2022

**Correction to: Global Social Welfare**  
<https://doi.org/10.1007/s40609-022-00227-w>

The original article has been corrected. The error is listed in Fig. 1 below. The error highlighted below should be corrected and replaced with the [figure](#) presented on page 3.

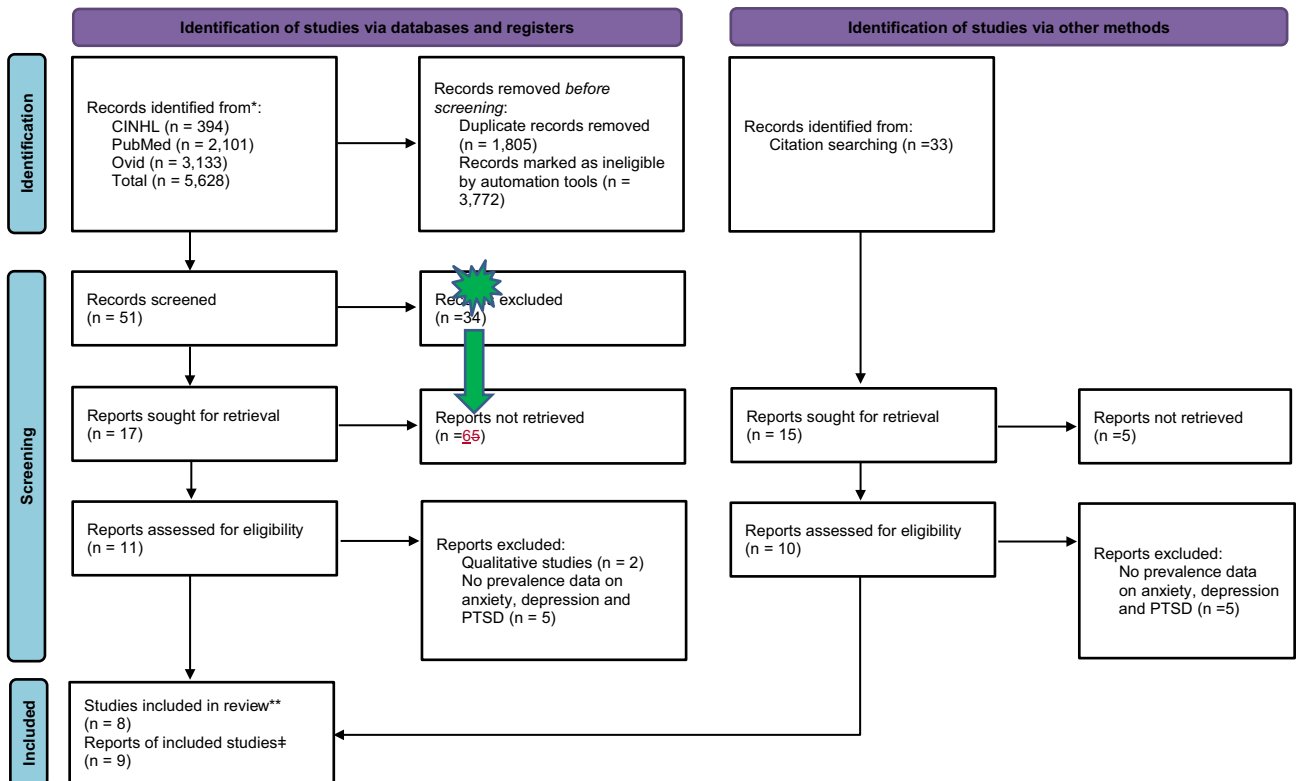
---

The original article can be found online at <https://doi.org/10.1007/s40609-022-00227-w>.

---

✉ Nhial T. Tutlam  
ntutlam@wustl.edu

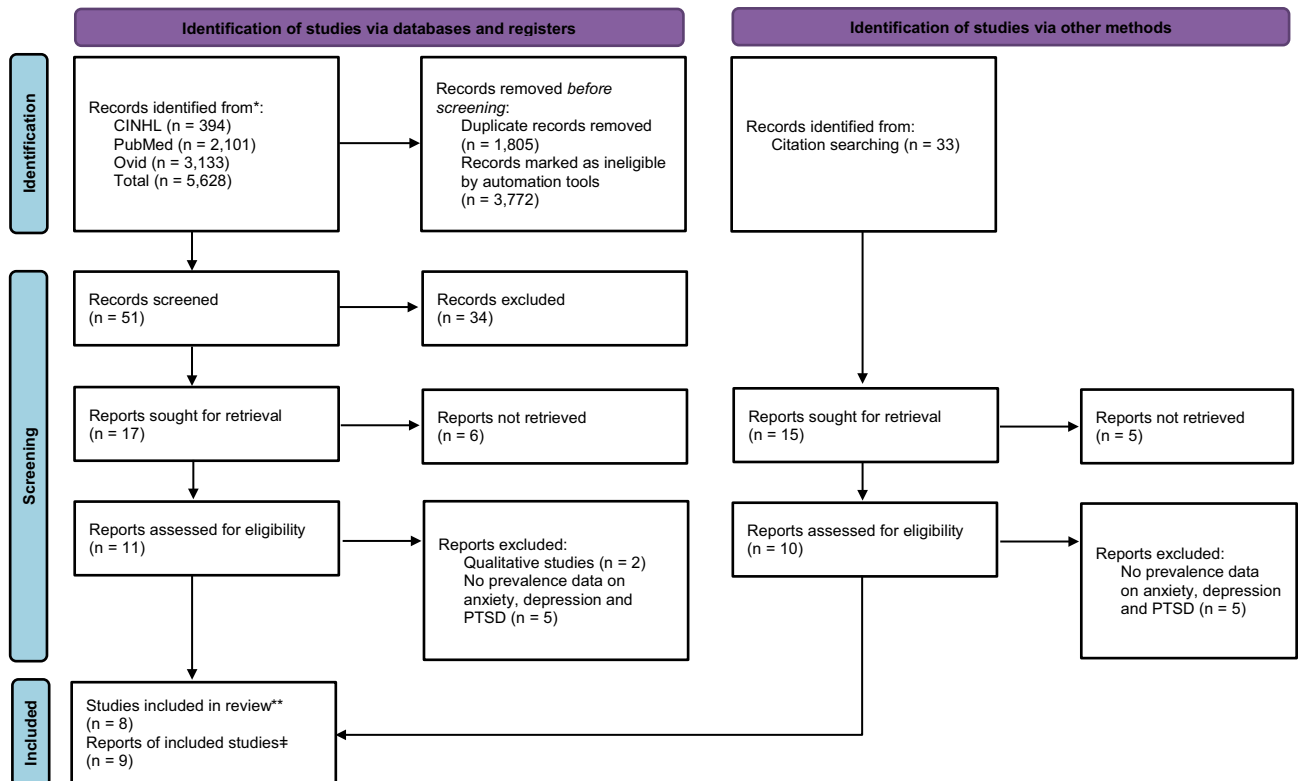
- <sup>1</sup> International Center for Child Health and Development (ICHAD), Brown School of Social Work, Washington University in St. Louis, St. Louis, MO, USA
- <sup>2</sup> Department of Epidemiology and Biostatistics, College for Public Health and Social Justice, Saint Louis University, St. Louis, MO, USA
- <sup>3</sup> Boston College School of Social Work, Chestnut Hill, St. Louis, MA, USA



\*Records identified from different databases using a combination of terms; \*\*one study had two articles; ‡ one article included data from two populations from two different settings.

From: Page MJ, McKenzie JE, Bossuyt PM, Boutron I, Hoffmann TC, Mulrow CD, et al. The PRISMA 2020 statement: an updated guideline for reporting systematic reviews. *BMJ* 2021;372:n71. doi: 10.1136/bmj.n71. For more information, visit: <http://www.prisma-statement.org/>

**Fig. 1** PRISMA flow chart outlining search process for selection of studies and reports included in this systematic review and meta-analysis



\*Records identified from different databases using a combination of terms; \*\*one study had two articles; ‡ one article included data from two populations from two different settings.

From: Page MJ, McKenzie JE, Bossuyt PM, Boutron I, Hoffmann TC, Mulrow CD, et al. The PRISMA 2020 statement: an updated guideline for reporting systematic reviews. *BMJ* 2021;372:n71. doi: 10.1136/bmj.n71. For more information, visit: <http://www.prisma-statement.org/>

**Fig. 1** PRISMA flow chart outlining search process for selection of studies and reports included in this systematic review and meta-analysis

**Publisher's Note** Springer Nature remains neutral with regard to jurisdictional claims in published maps and institutional affiliations.