

Erratum to: Autologous Bone-marrow Mesenchymal Cell induced Chondrogenesis: Single-stage Arthroscopic Cartilage Repair

Asode Ananthram Shetty^{1,2} · Seok Jung Kim^{2,3} · Vishvas Shetty^{1,2} ·
David Stelzeneder⁵ · Neha Shetty^{1,2} · Praveen Bilagi^{2,4} · Hyun-Jin Lee³

Published online: 27 July 2017

© The Korean Tissue Engineering and Regenerative Medicine Society and Springer Science+Business Media B.V. 2017

**Erratum to: Tissue Engineering and Regenerative
Medicine, Vol. 11, No. 3, pp 247–253
(2014)**
DOI 10.1007/s13770-014-0061-4

There was an error in Fig. 3 caption of the originally published article. Please find the correct figure and caption in this erratum (Fig. 3).

The online version of the original article can be found under
doi:[10.1007/s13770-014-0061-4](https://doi.org/10.1007/s13770-014-0061-4).

✉ Seok Jung Kim
peter@catholic.ac.kr

¹ Canterbury Christ Church University, Faculty of Health and Social Sciences, 30 Pembroke Court, Chatham Maritime, Kent ME4 4UF, United Kingdom

² Kent Knee Unit, Spire Alexandra Hospital, Impton lane, Chatham, Kent ME5 9PG, United Kingdom

³ Department of Orthopedic Surgery, Uijeongbu St. Mary's Hospital, College of Medicine, The Catholic University of Korea, 222 Banpo-daero, Seocho-gu, Seoul 137-701, Republic of Korea

⁴ Medway Maritime Hospital, Windmill Road, Gillingham, Kent ME7 5NY, United Kingdom

⁵ Department of Orthopaedics, Medical University of Vienna, Waehringer Guertel 18-20, 1090 Vienna, Austria

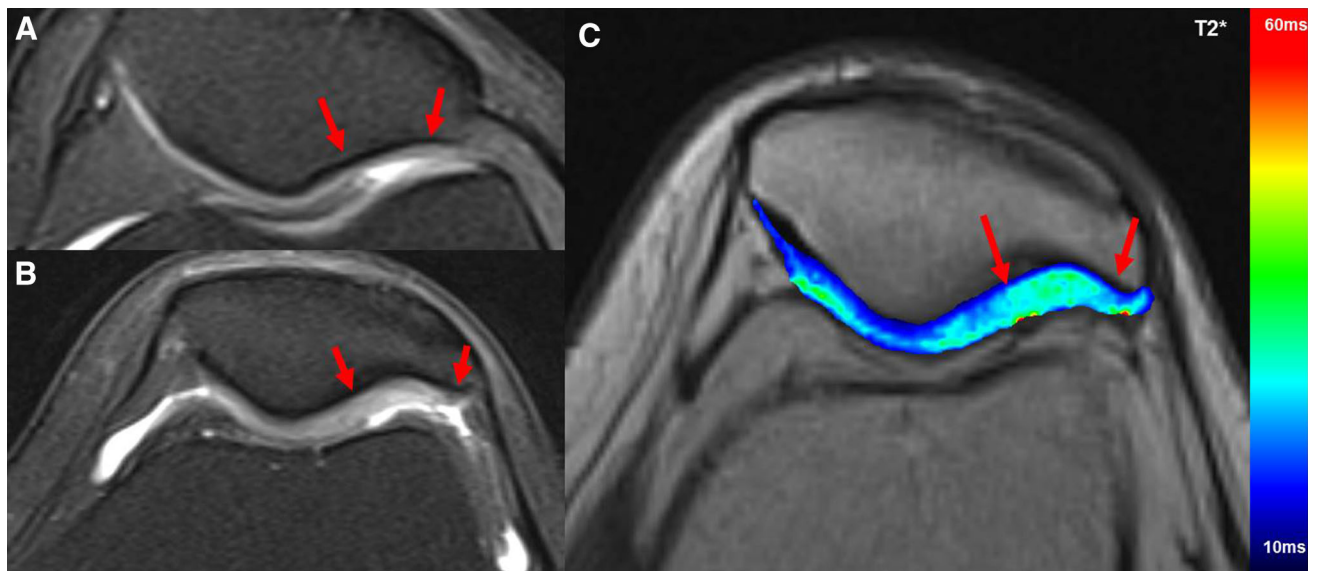


Figure 3. MRI images for patellar femoral joint lesions. The area between the two red arrows indicates area of repaired cartilage lesions. (A) Morphological MRI scan pre-operatively. (B) Morphological MRI scan post-operatively. (C) MRI T2* mapping post-operatively