



## Correction to: Minus-C subfamily has diverged from Classic odorant-binding proteins in honeybees

Bhavika MAM<sup>1,2,3</sup> , Snehal D. KARPE<sup>1</sup> , and Ramanathan SOWDHAMINI<sup>1,4</sup>

<sup>1</sup> National Centre for Biological Sciences, Tata Institute of Fundamental Research, GKVK Campus, Bangalore, Karnataka, India

<sup>2</sup> The University of Trans-Disciplinary Health Sciences and Technology (TDU), Bangalore, Karnataka, India

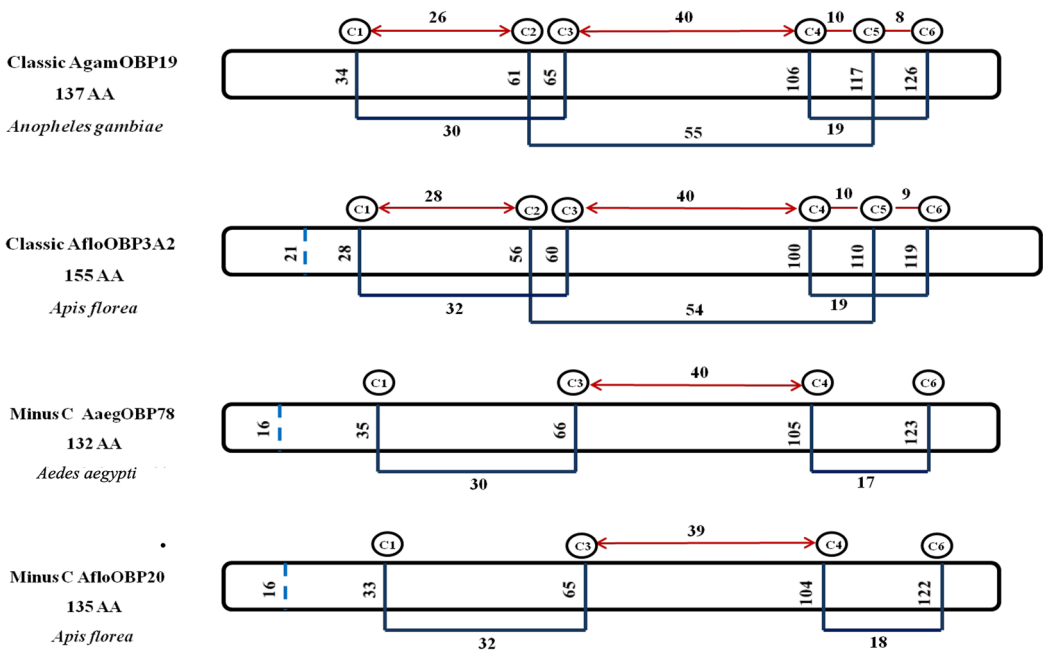
<sup>3</sup> Department of Medicine, Stanford University School of Medicine, Stanford, CA, USA

<sup>4</sup> Institute of Bioinformatics and Applied Biotechnology, GN Ramachandran Rd, Bangalore, Karnataka 560100, India

### Correction to: Apidologie (2023) 54:12

<https://doi.org/10.1007/s13592-022-00988-5>

The article was published with an error in Fig. 1. In Fig. 1, the MinusC OBP is AegOBP78, but its reference species name is *Anopheles gambiae*. Included herein is the modified figure with the corrected MinusC reference species to *Aedes aegypti*.



**Open Access** This article is licensed under a Creative Commons Attribution 4.0 International License, which permits use, sharing, adaptation, distribution and reproduction in any medium or format, as long as you give appropriate credit to the original author(s) and the source, provide a link to the Creative Commons licence, and indicate if changes were made. The images or other third party material in this article are included in the article's Creative Commons licence, unless indicated otherwise in a credit line to the material. If material is not included in

the article's Creative Commons licence and your intended use is not permitted by statutory regulation or exceeds the permitted use, you will need to obtain permission directly from the copyright holder. To view a copy of this licence, visit <http://creativecommons.org/licenses/by/4.0/>.

**Publisher's Note** Springer Nature remains neutral with regard to jurisdictional claims in published maps and institutional affiliations.