

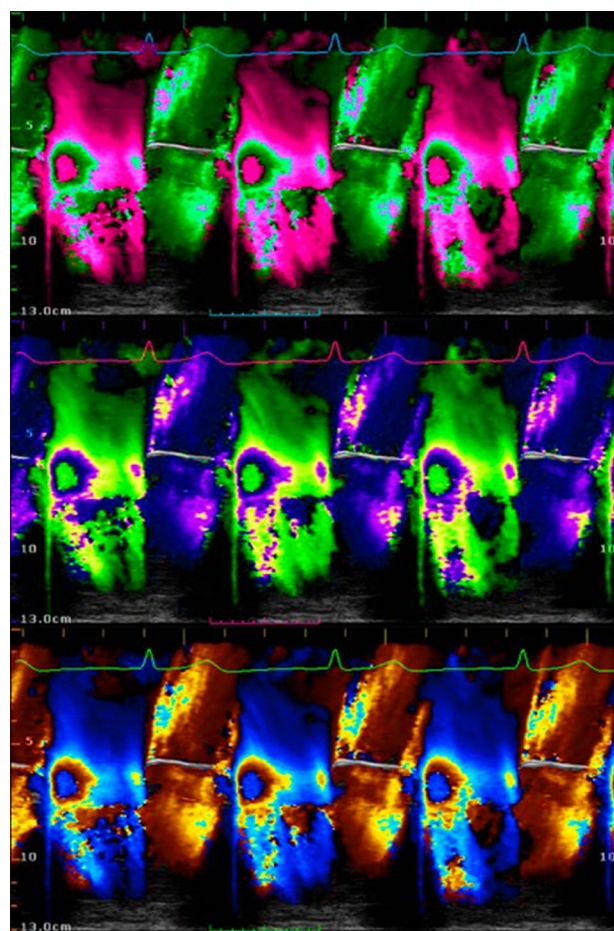
M-mode colour Doppler: where art meets science

Lebron Cooper, MD · Stefan Harsch, DVM

Received: 24 April 2015 / Accepted: 30 April 2015 / Published online: 13 May 2015
© Canadian Anesthesiologists' Society 2015

The electronic reproduction of a transesophageal echocardiographic (TEE) 2D M-mode colour Doppler image of three cardiac cycles depicts severe mitral regurgitation in a female patient undergoing mitral valve repair. The image was originally captured (bottom panel) and electronically archived using an iE33 TEE platform (Philips North America, Andover, MA, USA). The image was de-identified and the colour values (hues) of the original were digitally modified (top two panels) using image editor software (Adobe Photoshop). The final image was then printed on canvas (91 cm × 182 cm), framed, and mounted. The original artwork can be viewed in Detroit, MI, USA.

Conflicts of interest None declared.



L. Cooper, MD (✉)
Department of Anesthesiology, Henry Ford Hospital, Detroit,
MI, USA
e-mail: lebroncooper@mac.com

S. Harsch, DVM
Humane Society United States, South Florida Wildlife Center,
Fort Lauderdale, FL, USA