



ERRATUM

Erratum to: Real-time ultrasound-guided spinal anesthesia using the SonixGPS® needle tracking system: a case report

Simon W. Wong, MD · Ahtsham U. Niazi, MD ·
Ki J. Chin, MD · Vincent W. Chan, MD

Published online: 6 December 2012
© Canadian Anesthesiologists' Society 2012

Erratum to: Can J Anesth/J Can Anesth
DOI 10.1007/s12630-012-9821-6

In the article entitled: “Real-time ultrasound-guided spinal anesthesia using the SonixGPS® needle tracking system: a case report” published in the January 2013 issue, Can J Anesth 2013; DOI: [10.1007/s12630-012-9809-2](https://doi.org/10.1007/s12630-012-9809-2), the image in Fig. 2 was incorrect. The updated image and the related figure legend appear in this erratum. The publisher apologizes most sincerely for this error.

The online version of the original article can be found under doi:[10.1007/s12630-012-9809-2](https://doi.org/10.1007/s12630-012-9809-2).

S. W. Wong, MD · A. U. Niazi, MD (✉) ·
K. J. Chin, MD · V. W. Chan, MD
Department of Anesthesia, Toronto Western Hospital,
399 Bathurst Street, Toronto, ON M5T 2S8, Canada
e-mail: Ahtsham.Niazi@uhn.ca

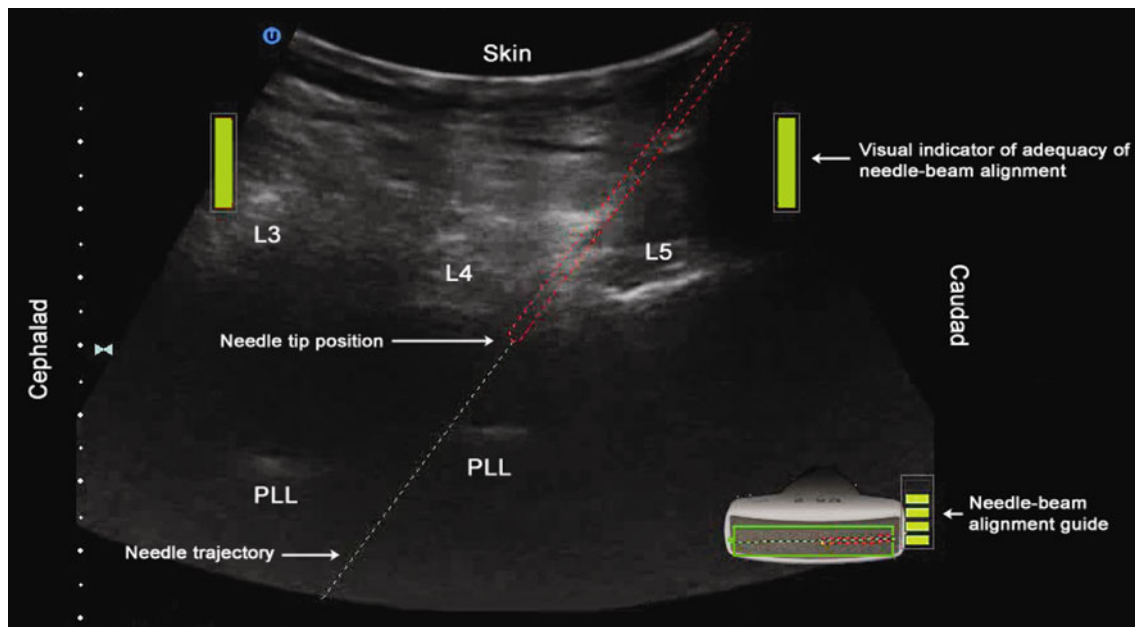


Fig. 2 Ultrasound image showing real-time needle advancement into the L4-L5 interspace. Needle trajectory is indicated on the screen by the dotted white line. The red outline indicates actual needle location. Needle-beam alignment is shown by the green bars on either side of

the image (green = good; red = poor) and also by the picture of the probe at the bottom right-hand side of the screen. L3, L4, L5 indicate the lamina of the corresponding vertebrae. PLL = the posterior longitudinal ligament and vertebral body complex