



Correction to: Role of Coronary Computed Tomography Angiography in Percutaneous Coronary Intervention of Chronic Total Occlusions

Poonam Velagapudi¹ · J. Dawn Abbott² · Mamas Mamas³ · Ron Blankstein⁴ · Yiannis S. Chatzizisis¹ · Emmanouil S. Brilakis⁵ · Farouc A. Jaffer⁶

Published online: 27 June 2020

© Springer Science+Business Media, LLC, part of Springer Nature 2020

Correction to: Current Cardiovascular Imaging Reports (2020)

<https://doi.org/10.1007/s12410-020-09541-3>

The original version of this image was of lower quality. The corrected image provides a better definition of the structures.

The online version of the original article can be found at <https://doi.org/10.1007/s12410-020-09541-3>

✉ Poonam Velagapudi
poonam.velagapudi@unmc.edu

J. Dawn Abbott
jabbott@lifespan.org

Mamas Mamas
mamasmamas1@yahoo.co.uk

Ron Blankstein
RBLANKSTEIN@bwh.harvard.edu

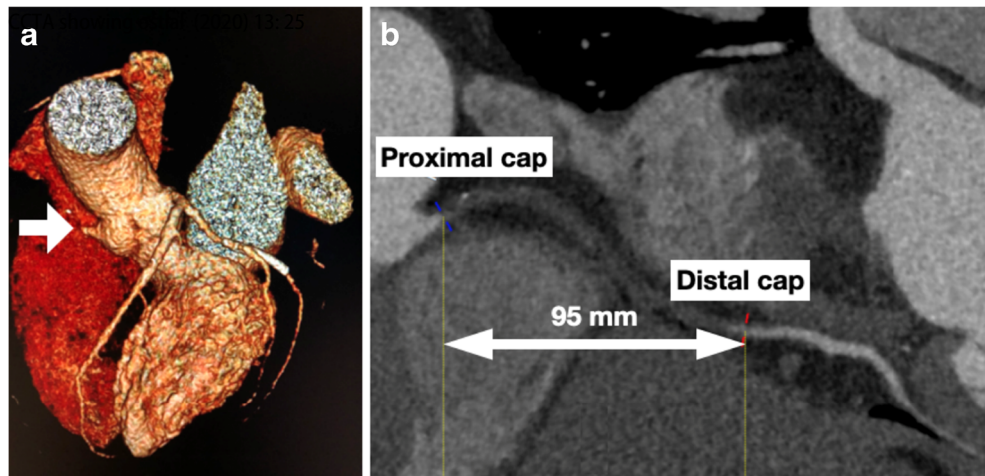
Yiannis S. Chatzizisis
esbrilakis@gmail.com

Emmanouil S. Brilakis
esbrilakis@gmail.com

Farouc A. Jaffer
fjaffer@mgh.harvard.edu

- ¹ Division of Cardiovascular Medicine, Department of Internal Medicine, University of Nebraska Medical Center, Omaha, NE, USA
- ² Brown University, Providence, RI, USA
- ³ Keele Cardiovascular Research Group, Keele University, Stoke-on-Trent, UK
- ⁴ Cardiovascular Division, Brigham and Women's Hospital, Boston, MA, USA
- ⁵ Minneapolis Heart Institute, Minneapolis, MN, USA
- ⁶ Cardiology Division, Massachusetts General Hospital, Boston, MA, USA

Fig. 3 CCTA showing ostial RCA CTO: A. 3-dimensional rendered view (white arrow denotes proximal cap). B. Curved multiplanar reformatted view showing the length of the CTO and the size of the distal and proximal cap. CCTA, coronary computed tomography angiography; RCA, right coronary artery; CTO, chronic total occlusion



Publisher's Note Springer Nature remains neutral with regard to jurisdictional claims in published maps and institutional affiliations.