

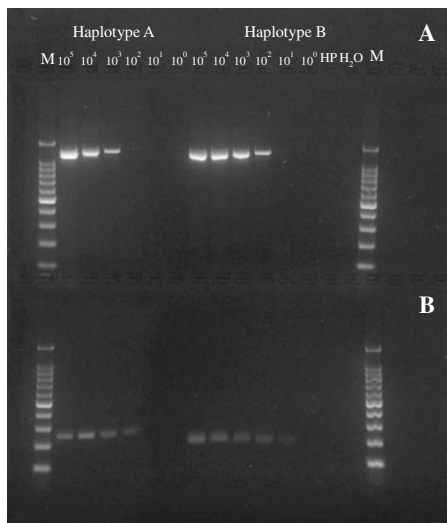
## Erratum to: Development of a PCR Assay for the Rapid Detection and Differentiation of ‘*Candidatus Liberibacter solanacearum*’ Haplotypes and Their Spatiotemporal Distribution in the United States

Aimin Wen · Chris Johnson · Neil C. Gudmestad

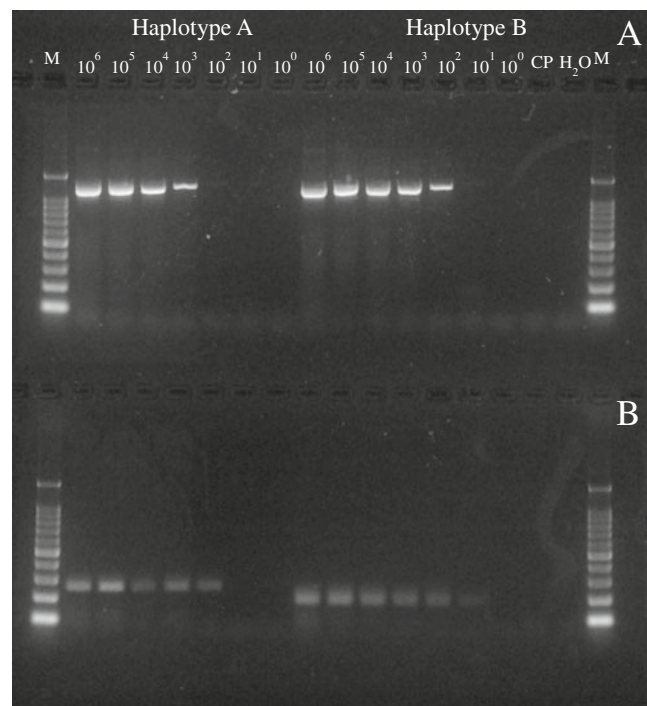
Published online: 20 April 2013  
© Potato Association of America 2013

Erratum to: Am. J. Potato Res.  
DOI 10.1007/s12230-012-9293-9

Older versions of Figs. 1, 2, 3 and Tables 1 and 2 were inadvertently published. The updated figures and tables are reproduced here.



**Fig. 1** Sensitivity of SSR and 16S PCR assays in potato samples infected with haplotype A Lso or haplotype B Lso. **a** 16S PCR products, and **b** SSR PCR products on the same set of DNA sample dilutions. Lane 1–6: 10-fold dilutions of total DNA extracted from potato sample harboring haplotype A Lso with starting  $10^5$  copies of Lso genome; lane 7–12: 10-fold dilutions of total DNA extracted from potato sample harboring haplotype B Lso with starting  $10^5$  copies of Lso genome; lane 13: potato DNA sample free of Lso; lane 14: water, negative control. M: 100 bp plus DNA ladder (Qiagen)

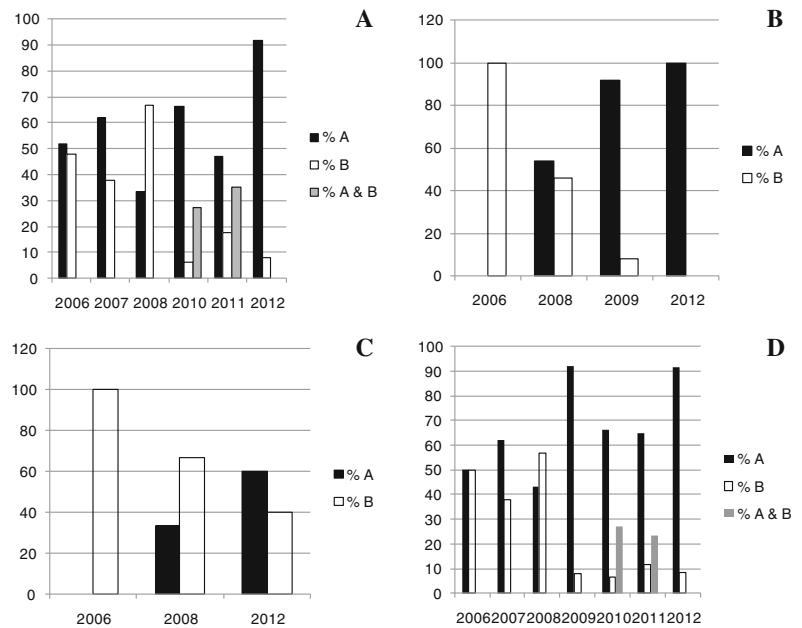


**Fig. 2** Sensitivity of SSR and 16S PCR assays in psyllid samples infected with haplotype A or haplotype B Lso. **a** 16S PCR products, and **b** SSR PCR products on the same set of sample dilutions. Lane 1–7: 10-fold dilutions of total DNA extracted from psyllid harboring haplotype A Lso with starting  $10^6$  copies of Lso genome; lane 8–14: 10-fold dilutions of total DNA extracted from psyllid harboring haplotype B Lso with starting  $10^6$  copies of Lso genome; lane 15: psyllid DNA sample free of Lso; lane 16: water, negative control. M: 100 bp plus DNA ladder (Qiagen)

The online version of the original article can be found at <http://dx.doi.org/10.1007/s12230-012-9293-9>.

A. Wen · C. Johnson · N. C. Gudmestad (✉)  
Department of Plant Pathology, North Dakota State University,  
Fargo, ND 58108, USA  
e-mail: neil.gudmestad@ndsu.edu

**Fig. 3** ‘*Candidatus Liberibacter solanacearum*’ haplotype detection frequency in potato samples collected in California, Colorado, Nebraska, Texas, Mexico and New Zealand from 2006 to 2012. **a** Texas; **b** Nebraska; **c** Colorado; and **d** All samples tested including those from California, USA and from Mexico and New Zealand



**Table 1** Frequency of ‘*Candidatus Liberibacter solanacearum*’ haplotypes detected in archived DNA from potato samples obtained from seven states of the USA, New Zealand and Mexico in 2006–2012

Year of collection	Origin <sup>a</sup> and symptom <sup>b</sup> (number of samples)	% Lso haplotype			
		A	B	A & B	
2006	CO, ZC (1)	0	100	0	
	NE, ZC (2)	0	100	0	
	TX, ZC (73)	52	48	0	
2007	TX, ZC (34)	62	38	0	
2008	CO, ZC (6)	33	67	0	
	KS, PY (7)	29	71	0	
	KS, ZC (17)	29	71	0	
	NE, PY (4)	100	0	0	
	NE, ZC (25)	47	53	0	
	TX, PY (6)	50	50	0	
	TX, ZC (72)	31	69	0	
	MX, ZC (16)	100	0	0	
	2009	CA, ZC (13)	92	8	0
		NE, ZC (62)	92	8	0
2010	TX, PY (16)	93	7	0	
	TX, ZC (110)	63	6	31	
2011	ID, ZC (77)	100	0	0	
	TX, PY (79)	100	0	0	
	TX, ZC (250)	30	23	47	
	WA, ZC (77)	100	0	0	
2012	NZ, ZC (11)	100	0	0	
	CO, ZC (10)	60	40	0	
	ID, ZC (23)	100	0	0	
	NE, PY (4)	100	0	0	
	NE, ZC (11)	100	0	0	
2012	TX, PY (15)	100	0	0	
	TX, ZC (30)	88	12	0	

<sup>a</sup> NZ stands for New Zealand, MX stands for Mexico

<sup>b</sup> ZC stands for zebra chip, PY for psyllid-yellowings

**Table 2** Frequency of ‘*Candidatus Liberibacter solanacearum*’ haplotypes detected in archived DNA from psyllid samples obtained from five states in the USA, New Zealand and Mexico in 2010–2012

Year of collection	Origin (number of Lso positive samples)	% Lso haplotype		
		A	B	A & B
2010	CA (4)	0	100	0
	ND (37)	100	0	0
	NE (54)	98	2	0
	TX (5)	0	100	0
	WA (8)	50	37	13
2011	TX (12)	33	25	42
	NZ <sup>a</sup> (8)	100	0	0
	MX <sup>b</sup> (4)	0	0	100
2012	TX (122)	39	36	25

<sup>a</sup> NZ stands for New Zealand

<sup>b</sup> Mexico psyllids were raised in growth room in Moxie, WA