

Erratum to: Cell-type-dependent access of HSF1 and HSF4 to α B-crystallin promoter during heat shock

Zhe Jing · Rajendra K. Gangalum · Josh Z. Lee ·
Dennis Mock · Suraj P. Bhat

Published online: 28 March 2013
© Cell Stress Society International 2013

Erratum to: Cell Stress and Chaperones DOI 10.1007/s12192-012-0386-7

In the above mentioned publication, an incorrect version of Fig. 5 has been used.

Due to an unfortunate conversion error, the location of one of the red pentagons in Fig. 5b appeared incorrectly. The red pentagons representing enhanced HSF1 in heated (*H*) NIH3T3

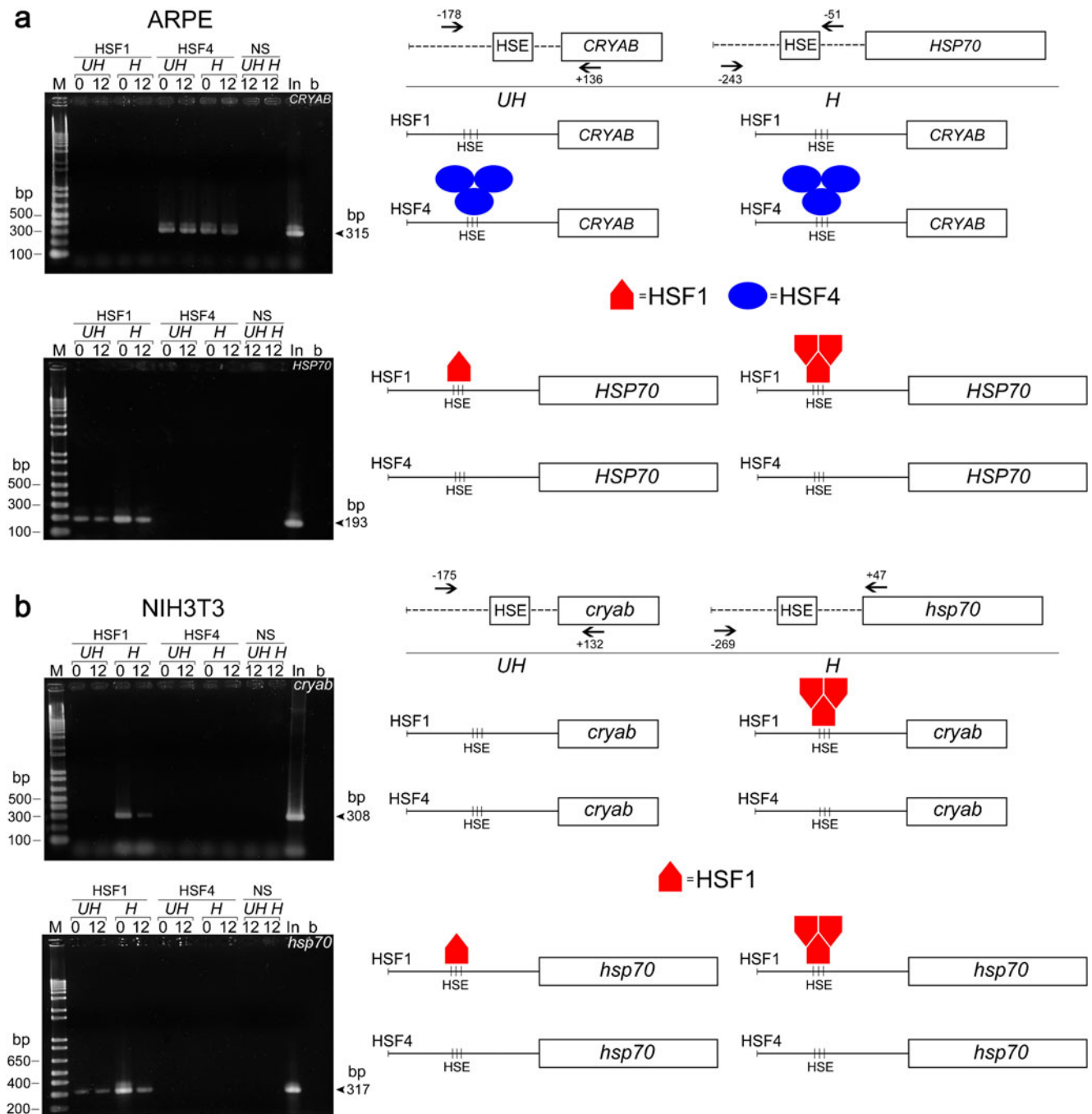
cells should be on the *cryab* gene promoter (as indicated below) and not on the schematics for the status of HSF4 on the *cryab* gene promoter (as incorrectly indicated in the original publication). Note that the originally published figure legend correctly describes the data as well as the schematics.

The correct image and its caption is published on the following page and should be treated as definitive by the reader.

The online version of the original article can be found at <http://dx.doi.org/10.1007/s12192-012-0386-7>.

Z. Jing · R. K. Gangalum · J. Z. Lee · D. Mock · S. P. Bhat
Jules Stein Eye Institute, David Geffen School of Medicine at
UCLA, Brain Research Institute and Molecular Biology Institute,
University of California, Los Angeles, CA 90095, USA

S. P. Bhat (✉)
Jules Stein Eye Institute, David Geffen School of Medicine at
UCLA, University of California, Los Angeles, CA 90095, USA
e-mail: bhat@jsei.ucla.edu



promoter only in heated cells (*red pentagons*). HSF1 is also present on the *hsp70* promoter in both the heated as well as unheated cells (*red pentagon*), but it is enhanced in heat shocked cells (*red pentagons*) just as in ARPE cells in **a**. Note that there is no HSF4 on either the *cryab* promoter or the *HSP70* promoter in NIH3T3 cells under any condition. The *first lane* of each gel shows the DNA markers (*M*, *bp* base pairs), the last lane (**b**) is the H₂O control. *H* heat shocked, *UH* not heat shocked, *In* input DNA before immunoprecipitation, *NS* normal serum. The sizes of amplicons are indicated on the right side of the agarose gels with an arrow pointing to the PCR product. The location of the primers for *cryab* and *HSP70* promoters in ARPE and NIH3T3 cells are schematically depicted. This experiment was repeated twice