

Erratum to: Mapping sediment thickness of Islamabad city using empirical relationships: Implications for seismic hazard assessment

SARFRAZ KHAN and M ASIF KHAN

J. Earth Syst. Sci., doi:10.1007/s12040-016-0675-0, **125(3)**, pp. 623–644

In the original version of this article, which appeared in *Journal of Earth System Science* **125(3)** 623–644, figures 1 and 2 were incorrectly presented. The corrected figures are as follows.

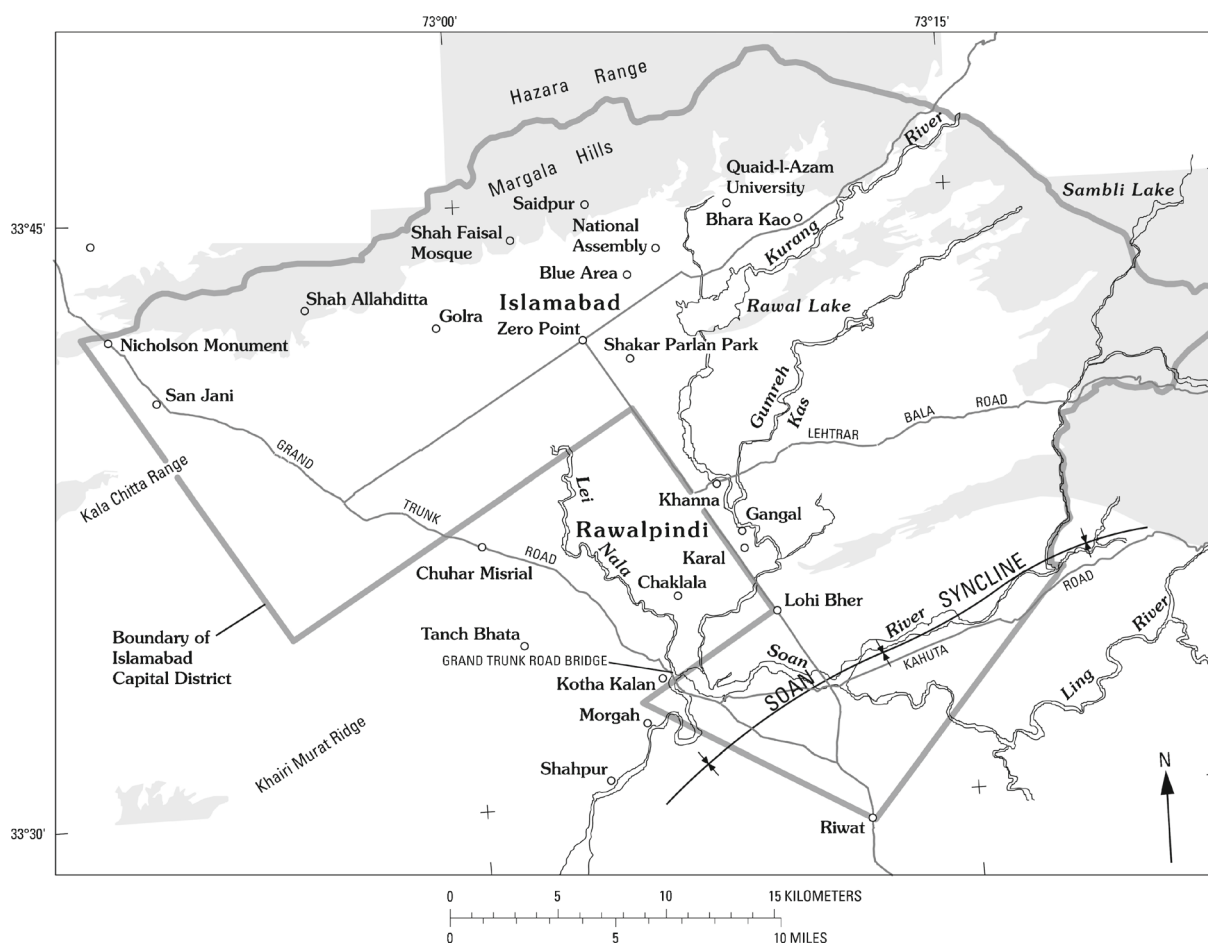


Figure 1. Location map of the study area, the bold light grey line shows the boundary of the Islamabad region.

*The online version of the original article can be found at <http://dx.doi.org/10.1007/s12040-016-0675-0>

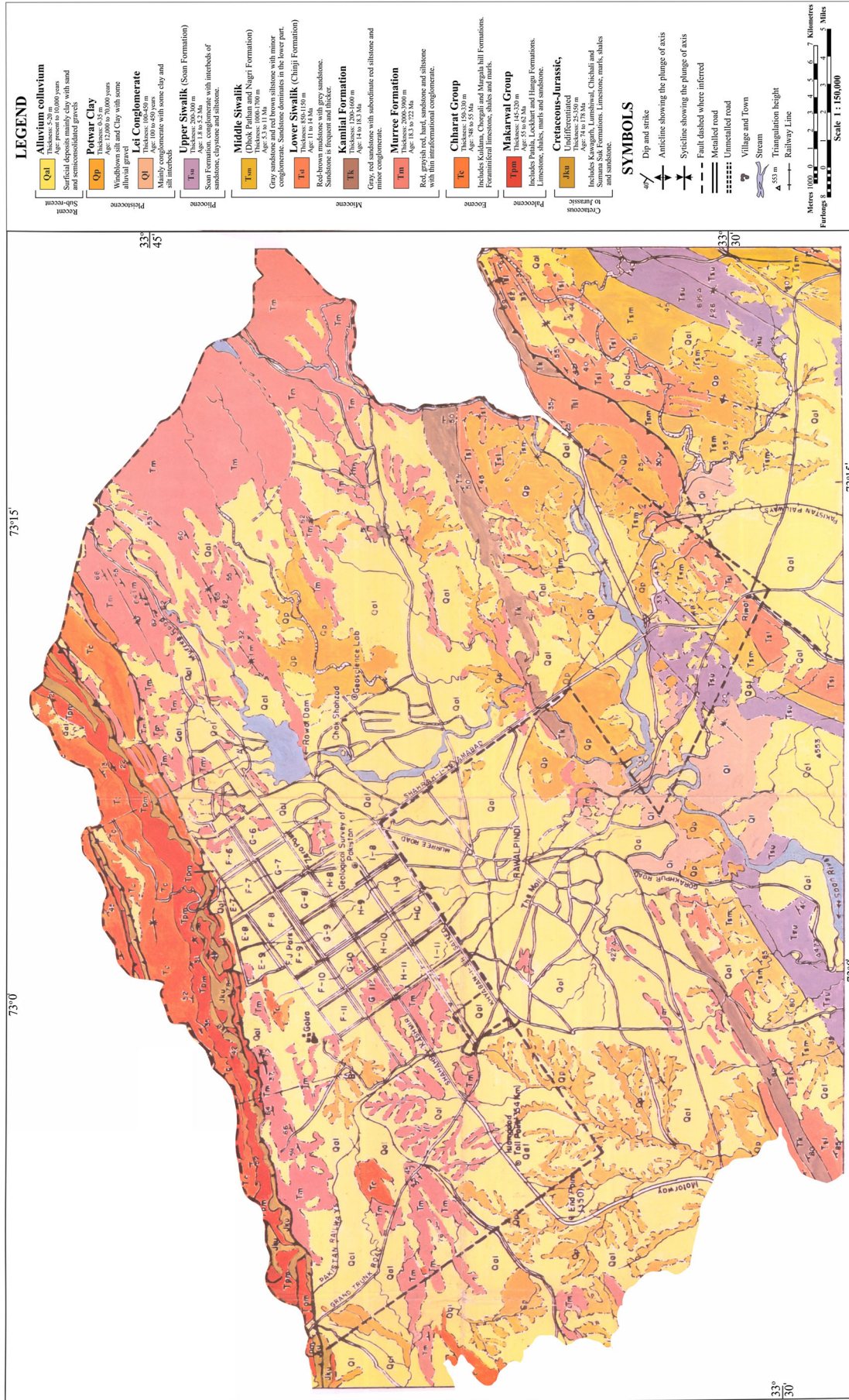


Figure 2. Geological map of the study area. Data points for ambient noise measurements survey were run at 81 sites in the study area (shown as grey dots).