




Correction: Immunoproteasome Subunit Low Molecular Mass Peptide 2 (LMP2) Deficiency Ameliorates LPS/A β 1-42-Induced Neuroinflammation

Yueting Guo¹ · Shiyi Wang¹ · Li Li^{2,3} · Hengce Zhang¹ · Xiaoyang Chen¹ · Zihan Huang¹ · Yingchun Liu¹ 

© The Author(s), under exclusive licence to Springer Science+Business Media, LLC, part of Springer Nature 2024

Correction: Molecular Neurobiology (2023) 61:28-41
<https://doi.org/10.1007/s12035-023-03564-9>

The original version of this article unfortunately contained error in Figure 1 and the authors would like to correct the image.

The framed images in Figure 1g, which should have been displayed mice LMP2 expression (red) in the cortex and hippocampus region, but the expression of LMP2^{-/-} rat NLRP3 (red) in the cortex and hippocampus region were mistakenly used.

The original article can be found online at <https://doi.org/10.1007/s12035-023-03564-9>.

✉ Yingchun Liu
lycmellisa@126.com

Yueting Guo
15001252427@qq.com

Shiyi Wang
sommerwang@163.com

Li Li
violet140@163.com

Hengce Zhang
zhc1047784563@163.com

Xiaoyang Chen
410561621@qq.com

Zihan Huang
2119523907@qq.com

- ¹ Key Laboratory of Stem Cell Engineering and Regenerative Medicine, Fujian Province University/School of Basic Medical Science, Fujian Medical University, Fuzhou City 350122, Fujian Province, China
- ² Key Laboratory of Gastrointestinal Cancer (Fujian Medical University), Ministry of Education, Fuzhou City 350122, Fujian Province, China
- ³ Department of Cell Biology and Genetics of Basic Medical Sciences, Fujian Medical University, Fuzhou City 350122, Fujian Province, China

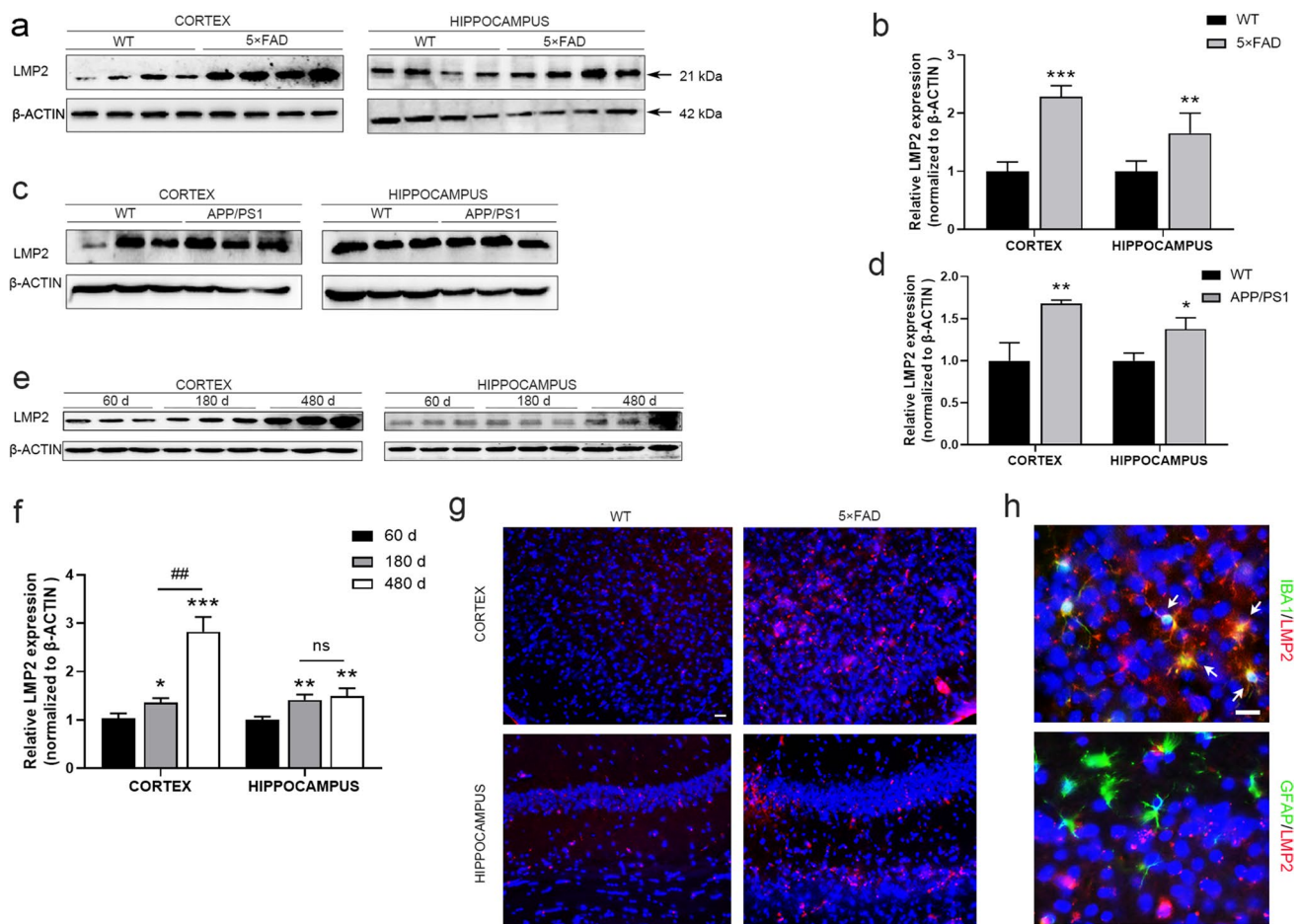


Fig. 1 LMP2 expression in the brain is increased upon aging and enhanced in AD mice. **a** Western blot analysis of cortex and hippocampus LMP2 expression in 14-month-old 5 × FAD and littermate wild-type mice. β-Actin served as a loading control. **b** Quantification of LMP2 protein levels in **a**, $n = 4$ mice per group. **c** Western blot analysis of cortex and hippocampal LMP2 expression in 18-month-old APP/PS1 mice. **d** Quantification of LMP2 protein levels in **c**, $n = 3$. **e** Western blot analysis of LMP2 expression in the cortex and hippocampus of 60-day-, 180-day-, and 480-day-old C57/BL6 mice. **f**

Quantification of LMP2 protein levels in **e**, $n = 3$ mice per group. **g** Immunofluorescence of LMP2 expression (red) in the cortex and CA1 region of WT and 5 × FAD mice. Nuclei (blue) visualized by DAPI counterstain. Scale bar 50 μm. **h** Double immunostaining of LMP2 (red) with IBA1 (green, a microglia specific protein) or GFAP (green, a astrocyte specific protein) in the brain of 5 × FAD mice. Data shown are the mean ± SD, * $p < 0.05$, ** $p < 0.01$, and *** $p < 0.001$; 180 days vs. 480 days: ## $p < 0.01$; ns not significant

The corrected images for Figure 1 is hereby published.
The original article has been corrected.

Publisher's Note Springer Nature remains neutral with regard to jurisdictional claims in published maps and institutional affiliations.