

Erratum to: Functional Characteristics and Molecular Mechanism of a New scFv Antibody Against A β 42 Oligomers and Immature Protofibrils

Yuan Zhang · Yuanhong Sun · Yangyang Huai · Ying-Jiu Zhang

Published online: 15 December 2014
© Springer Science+Business Media New York 2014

Erratum to: Mol Neurobiol
DOI 10.1007/s12035-014-8910-7

Figures 2c and 7c of the original articles unfortunately contain mistakes. The authors would like to correct these figures and are now elaborated as follows:

- (1) In Fig. 2c, the names of the two lanes should be swapped left–right. In the second line from the bottom of its caption, the word “left” should be “right.”
- (2) A β 42-Q26 in Fig. 7c should be A β 42-N27

Correct Figs. 2 and 7 are hereby published.

The online version of the original article can be found at <http://dx.doi.org/10.1007/s12035-014-8910-7>.

Y. Zhang · Y. Sun · Y. Huai · Y.-J. Zhang (✉)
Key Laboratory for Molecular Enzymology and Engineering of
Ministry of Education, Jilin University, 130012 Changchun, China
e-mail: yingjiu@jlu.edu.cn

Y.-J. Zhang
National Engineering Laboratory for AIDS Vaccine, Jilin University,
130012 Changchun, China

Y.-J. Zhang
School of Life Science, Jilin University, 130012 Changchun, China

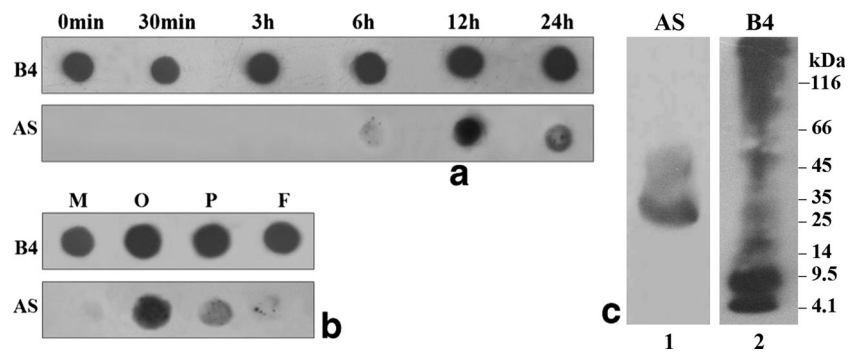


Fig. 2 Dot blot and Western blot analyses for the binding specificities of scFv AS to various A β 42 species. Dots of A β 42 monomers after incubation for an indicated period of time (0 and 30 min; 3, 6, 12, and 24 h) **a** or of A β 42 monomers, oligomers, protofibrils, and fibrils **b** were probed with B4 and scFv AS, respectively, and then were detected with HRP-

conjugated IgG and visualized with ECL chemiluminescence kit. Detection of scFv AS binding to various A β 42 species ranging from A β 42 monomers to fibrils by Western blot **c**. B4 served as positive controls [*top row* in **a** and **b** or *right lane* in **c**]. *M* monomers, *O* oligomers, *P* protofibrils, *F* fibrils

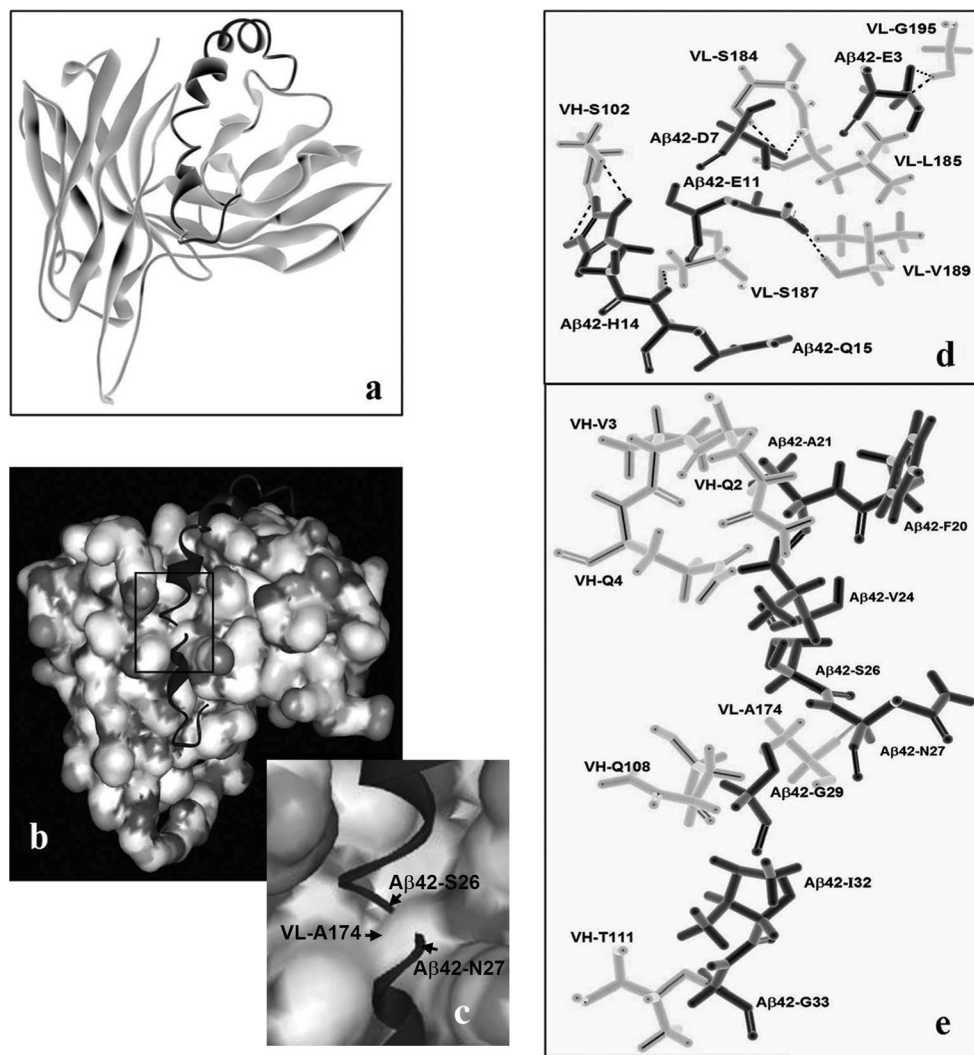


Fig. 7 Molecular docking model of A β 42 monomer to scFv AS. **a** Ribbon display mode showing A β 42 in dark black, scFv AS in light black. **b** Surface representation of the model. **c** Close-up view of VL-Ala174, A β 42-Ser26, and A β 42-Asn27 as those in **b**. **d** The hydrogen bonding

interactions (*dashed lines*) between scFv AS and the N-terminal region (residues 1–15) of A β 42 monomer. **e** The hydrophobic bonding interactions between scFv AS and the central region (residues 20–33) of A β 42 monomer