

Erratum to: What MRI Findings Predict Failure 10 Years After Surgery for Femoroacetabular Impingement?

Markus S. Hanke MD, Simon D. Steppacher MD, Helen Anwander MD,
Stefan Werlen MD, Klaus A. Siebenrock MD, Moritz Tannast MD

Published online: 12 September 2016
© The Association of Bone and Joint Surgeons® 2016

Erratum to: Clin Orthop Relat Res DOI 10.1007/s11999-016-5040-8

In the study, “What MRI Findings Predict Failure 10 Years After Surgery for Femoroacetabular Impingement?” the overview of the study population in Fig. 1 is incorrect as published. A total of 20 hips underwent MRA at another institution, not eight hips. Additionally, 10 hips had been operated on the contralateral side with a similar appearance, not 22 hips. The corrected Fig. 1 is shown in this erratum.

We apologize for the error.

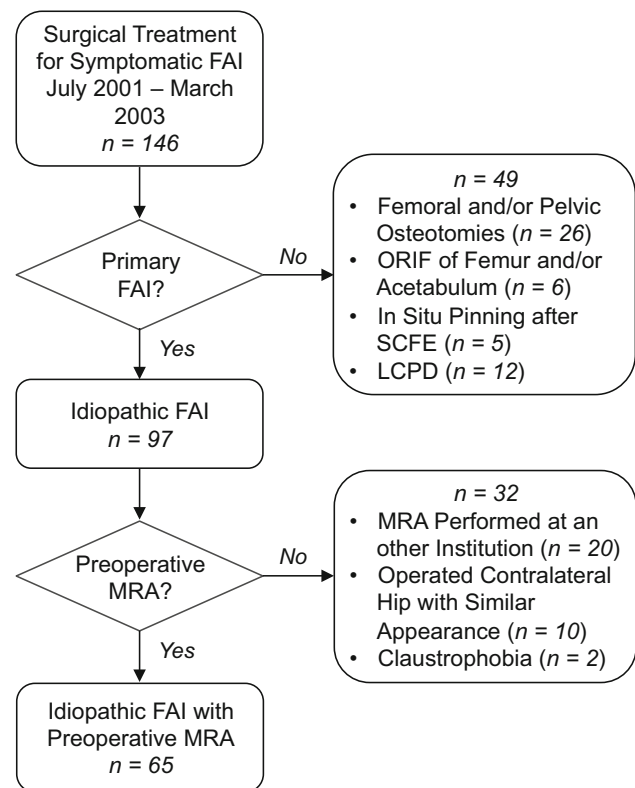


Fig. 1 Overview of the study population. ORIF = open reduction and internal fixation; SCFE = slipped capital femoral epiphysis; LCPD = Legg-Calvé-Perthes disease; MRA = magnetic resonance arthrogram.

The online version of the original article can be found under doi:10.1007/s11999-016-5040-8.

M. S. Hanke (✉), S. D. Steppacher, H. Anwander,
K. A. Siebenrock, M. Tannast
Department of Orthopedic Surgery, Inselspital, University of
Bern, Freiburgstrasse, 3010 Bern, Switzerland
e-mail: markus.hanke@insel.ch

S. Werlen
Department of Radiology, Sonnenhof Clinic, Bern, Switzerland