

ERRATA

# Erratum to: Insurance Status, not Race, is Associated with Mortality After an Acute Cardiovascular Event in Maryland

Derek K. Ng, ScM<sup>1</sup>, Daniel J. Brotman, MD<sup>2</sup>, Bryan Lau, PhD, MHS, ScM<sup>1,2</sup>, and J. Hunter Young, MD, MHS<sup>1,2</sup>

<sup>1</sup>Department of Epidemiology, Johns Hopkins Bloomberg School of Public Health, Baltimore, MD, USA; <sup>2</sup>Department of Medicine, Johns Hopkins Medical Institutions, Baltimore, MD, USA.

J Gen Intern Med 27(11):1569  
 DOI: 10.1007/s11606-012-2214-2  
 © Society of General Internal Medicine 2012

**Erratum to: J Gen Intern Med**  
**DOI: 10.1007/s11606-012-2147-9**

Figure 1 in the original publication is missing a label on the y axis. The corrected figure appears below.

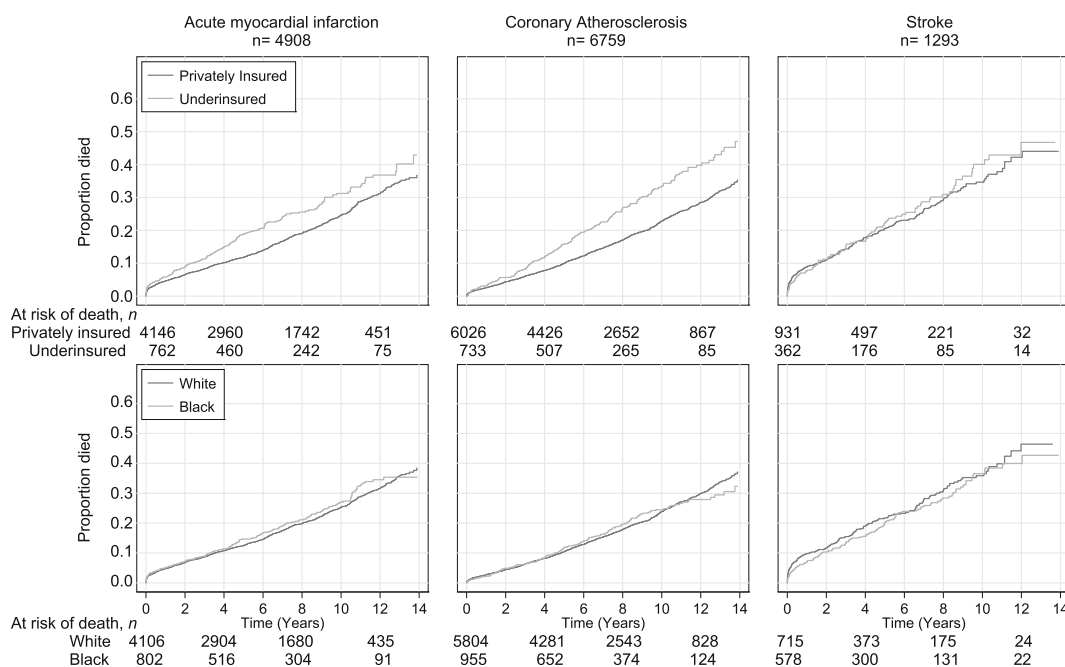


Figure 1. Kaplan–Meier plots, stratified by index admission condition comparing insurance status and race. The grey lines represent the expected high-risk groups (underinsured and black race).

**Corresponding Author:** Derek K. Ng, ScM; Department of Epidemiology, Johns Hopkins Bloomberg School of Public Health, 615 North Wolfe Street, Room E7133, Baltimore, Md 21025, USA (e-mail: dng@jhsph.edu)

The online version of the original article can be found at <http://dx.doi.org/10.1007/s11606-012-2147-9>.

Published online September 5, 2012