

ERRATUM

Erratum to: Cost Implications of ACGME's 2011 Changes to Resident Duty Hours and the Training Environment

Teryl K. Nuckols, MD, MSHS^{1,2} and José J. Escarce, MD, PhD^{1,2}

¹Division of General Internal Medicine and Health Services Research, David Geffen School of Medicine at the University of California, Los Angeles, CA, USA; ²The RAND Corporation, Santa Monica, CA, USA.

J Gen Intern Med 27(2):262–3

DOI: 10.1007/s11606-011-1827-1

© Society of General Internal Medicine 2011

The original publication omits a correction intended for Figure 2B. The complete corrected Figure 2 is reproduced here.

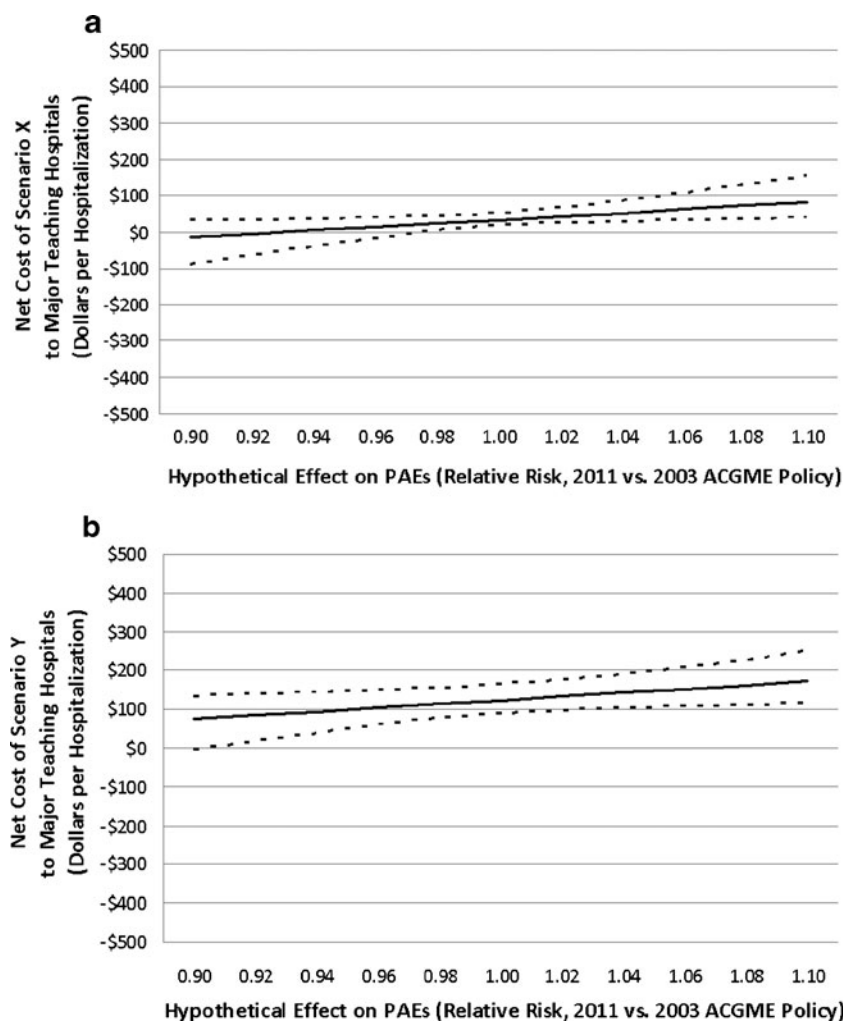


Figure 2. Net cost to major teaching hospitals of ACGME's 2011 Common Program Requirements as a function of the policy's hypothetical effect on preventable adverse events (PAEs). (a) scenario X: most programs reorganize schedules to comply with 16-hour shift requirement; small programs transfer PGY1s' excess work to other providers. (b) scenario Y: all programs transfer PGY1s' excess work to other providers. (In this figure, the other providers are a mixture of substitutes). Legend: —mean modeled estimate,95% confidence interval for mean modeled estimate.

Corresponding Author: Teryl K. Nuckols, MD, MSHS; Division of General Internal Medicine and Health Services Research, David Geffen School of Medicine at the University of California, 911 Broxton Avenue, Los Angeles, CA, 90095, USA (e-mail: tnuckols@mednet.ucla.edu)

The online version of the original article can be found at <http://dx.doi.org/10.1007/s11606-011-1775-9>.

Published online August 25, 2011