



## Correction to: Mathematical Model of Chronic Dermal Wounds in Diabetes and Obesity

Avner Friedman<sup>1</sup> · Nourridine Siewe<sup>2</sup> 

Published online: 7 January 2021

© Society for Mathematical Biology 2021

### Correction to: Bull Math Biol

<https://doi.org/10.1007/s11538-020-00815-x>

The original version of this article unfortunately contained a mistake. The presentation of Figure 3 was incorrect. The correct version of Fig. 3 is given below.

---

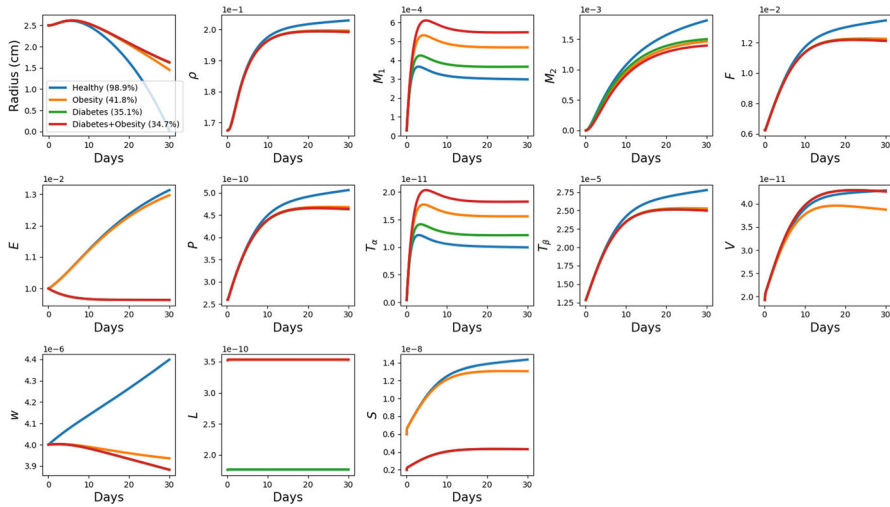
The original article can be found online at <https://doi.org/10.1007/s11538-020-00815-x>.

---

✉ Nourridine Siewe  
[nourridine@aims.ac.za](mailto:nourridine@aims.ac.za)

<sup>1</sup> Mathematical Biosciences Institute and Department of Mathematics, The Ohio State University, Columbus, OH, USA

<sup>2</sup> School of Mathematical Sciences, Rochester Institute of Technology, 1 Lomb Memorial Dr, Rochester, NY 14623, USA



**Fig. 3** Wound size and average densities/concentrations. The wound radius, and model variables are plotted for 30 days in a healthy case ( $D_1 = D_2 = D_3 = D_4 = 0$ ) and in cases of obesity only ( $D_1 = D_3 = 0$ ), diabetes only ( $D_2 = 0$ ) and diabetes+obesity. **a**  $\mathbf{D} = (0.2, 1, 2, 1.5)$  and diabetes<obesity since  $\text{RWC}(30; 0.2, 0, 2, 1.5) = 35.1\%$  while  $\text{RWC}(30; 0, 1, 0, 1.5) = 41.8\%$ ; **b**  $\mathbf{D} = (0.02, 25, 0.2, 1.5)$  and obesity<diabetes since  $\text{RWC}(30; 0, 25, 0, 1.5) = 38.6\%$  while  $\text{RWC}(30; 0.02, 0, 0.2, 1.5) = 40.3\%$

**Publisher's Note** Springer Nature remains neutral with regard to jurisdictional claims in published maps and institutional affiliations.