

Erratum to: Assessment of Blood Contamination in Biological Fluids Using MALDI-TOF MS

Katrina Laks^{1,2} · Tiina Kirsipuu^{1,2} · Tuuli Dmitrijeva¹ · Andres Salumets^{2,3} ·
Peep Palumaa^{1,2}

Published online: 21 April 2016
© Springer Science+Business Media New York 2016

Erratum to: Protein J
DOI 10.1007/s10930-016-9657-y

The original version of this article unfortunately contained a mistake. The presentation of Fig. 2 was incorrect. The corrected Fig. 2 is given below.

The online version of the original article can be found under doi:[10.1007/s10930-016-9657-y](https://doi.org/10.1007/s10930-016-9657-y).

✉ Katrina Laks
katrina.laks@gmail.com

¹ Department of Gene Technology, Tallinn University of Technology, Akadeemia st 15, 12618 Tallinn, Estonia

² Competence Centre on Health Technologies, Tiigi 61b, 50410 Tartu, Estonia

³ Institute of Bio- and Translational Medicine, University of Tartu, Ravila 19, 50411 Tartu, Estonia

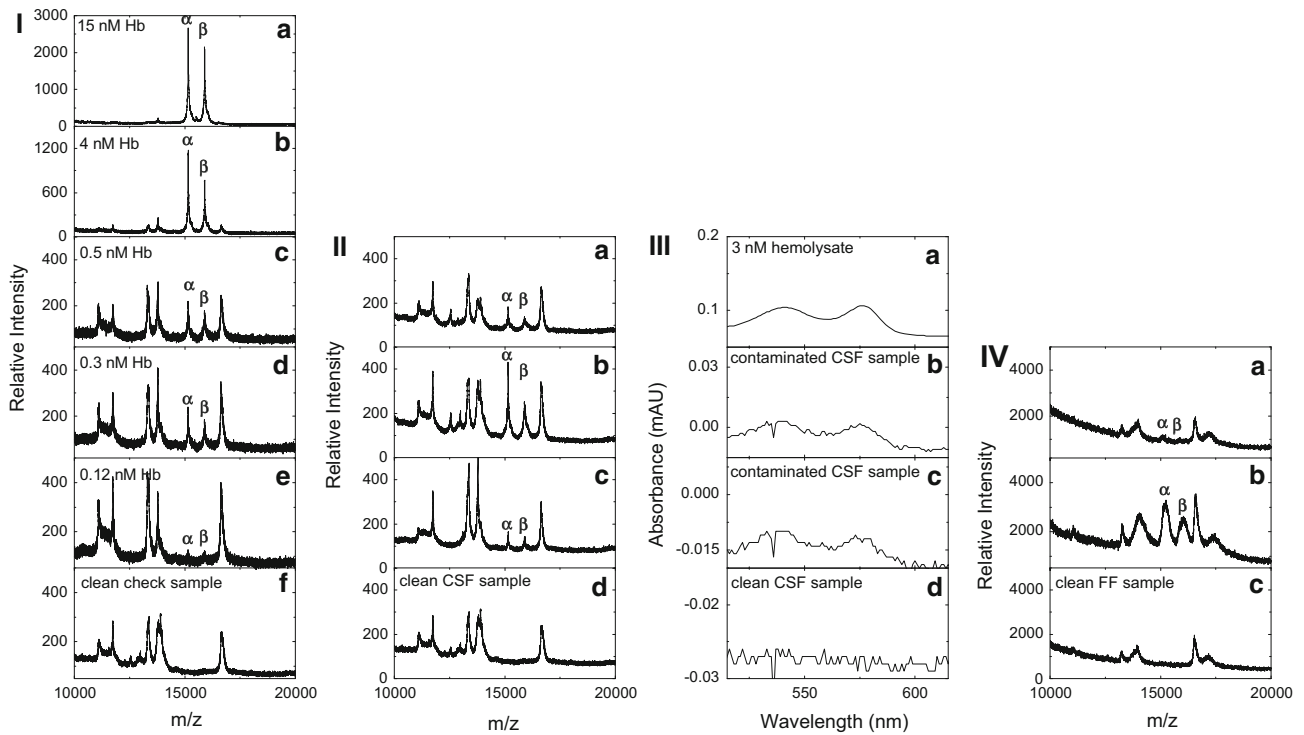


Fig. 2 Blood contamination detection in biological fluids. **I** MALDI-TOF MS spectra of CSF. **a–e** Artificially Hb-contaminated CSF. α and β denote the Hb α - and β -chains (15.1 and 15.9 kDa, respectively). **f** Negative control-uncontaminated CSF. **II** MALDI-TOF MS spectra of CSF. **a–c** Contaminated CSF samples.

d Uncontaminated CSF sample. **III** Spectrophotometric analysis of CSF (515–615 nm). **a** The 3.0-nM hemolysate absorbance spectrum. **b, c** Contaminated CSF. **d** Uncontaminated CSF. **IV** MALDI-TOF MS spectra of FF. **a, b** Contaminated FF samples. **c** Uncontaminated FF sample