

Erratum to: PVDF/PAN Blend Membrane: Preparation, Characterization and Fouling Analysis

Arezou Anvari¹ · Amir Azimi Yancheshme¹ · Fatemeh Rekaabdar² ·
Mahmood Hemmati² · Maryam Tavakolmoghadam² · Aliakbar Safekordi¹

Published online: 24 May 2017
© Springer Science+Business Media New York 2017

Erratum to: J Polym Environ DOI 10.1007/s10924-016-0889-x

In the original publication, some parts of Fig. 7 were repeated twice. Also, the citations of Fig. 7 were given incorrectly in the text. The above mentioned are corrected as follows:

1. In the section titled, “Morphological Analysis of the Prepared Membranes”, the first sentence of second para should read, “As can be seen from Fig. 7a1, the neat PVDF membrane in the absence of PAN has a sponge like structure with small pores.”
2. In the third Para, the third sentence should read, “These finger like pores, formed under the skin layer

as shown in Fig. 7b2–e2, have also been reported in a similar study.”

In the section titled “Fouling Analysis”, the fifth sentence of fourth para should read, “By further addition of PAN to values higher than 10 wt% more spherical particles are formed and the irreversible resistance (R_{ir}) is increased.”

In the section “conclusions”, the second point should read “The porosity of the PVDF/PAN blend membranes increased from 46.56 to 81.95 due to the increase in the PAN concentration.”

The revised text of reference number 25 is given below:

The online version of the original article can be found under doi:[10.1007/s10924-016-0889-x](https://doi.org/10.1007/s10924-016-0889-x).

✉ Maryam Tavakolmoghadam
tavakolm@ripi.ir

Arezou Anvari
arezu.anvari@gmail.com

Amir Azimi Yancheshme
amirazimi.y@gmail.com

Fatemeh Rekaabdar
rekaabdarf@ripi.ir

Mahmood Hemmati
hemmatim@ripi.ir

Aliakbar Safekordi
safekordi@sharif.edu

¹ Chemical Engineering Department, Sharif University, Tehran, Iran

² Research Institute of Petroleum Industry, Tehran, Iran

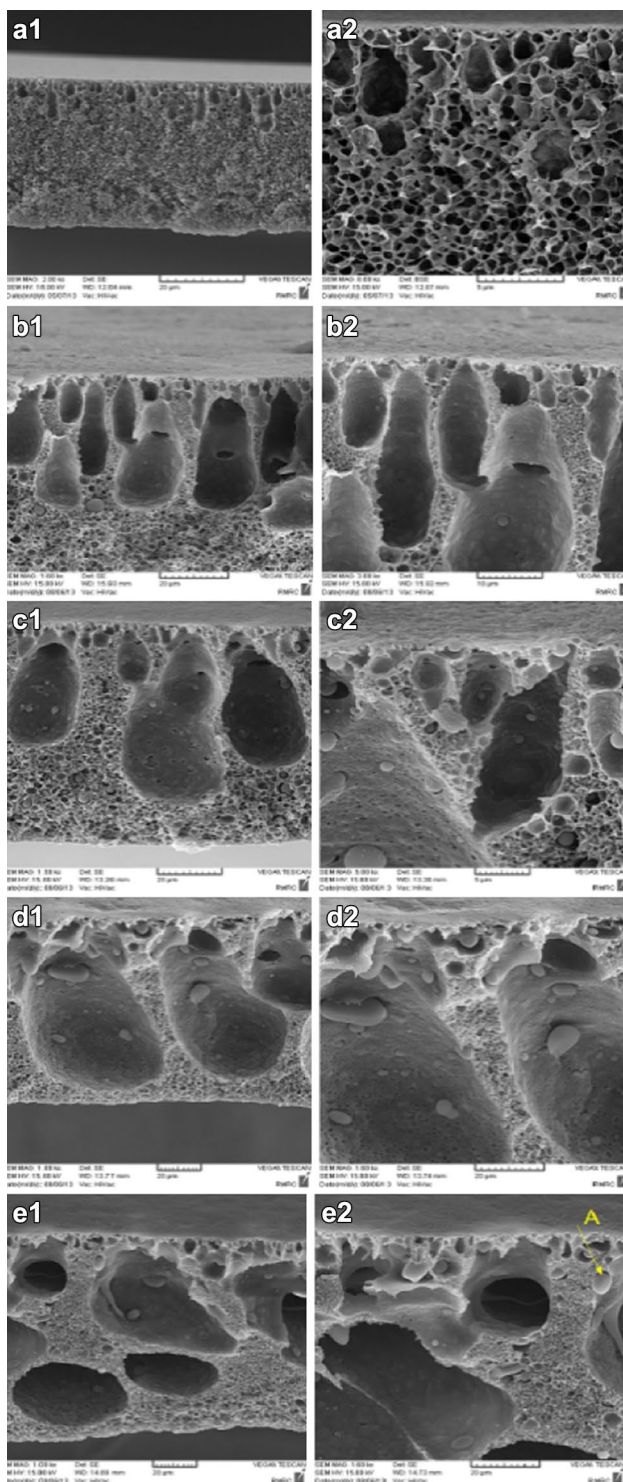


Fig. 7 SEM images of the blend PVDF/PAN membrane based on different PAN concentration in the casting solution (PAN composition in a–e is 0, 5, 10, 15 and 20 respectively)

Reference

- Anvari A, Safekordi A, Hemmati M, Rekabdar F, Tavakolmoghadam M, Azimi Yancheshme A, Gheshlaghi A (2016) Desalin Water Treat 57: 12090