

Erratum to: TH1/TH2 Functional Imbalance After Acute Myocardial Infarction: Coronary Arterial Inflammation or Myocardial Inflammation

Xiang Cheng · Yu-hua Liao · Hongxia Ge · Bin Li · Jinying Zhang ·
Jing Yuan · Min Wang · Ying Liu · Zhangqiang Guo · Jing Chen ·
Jin Zhang · Lanjing Zhang

Published online: 3 June 2014
© Springer Science+Business Media New York 2014

Erratum to: J Clin Immunol
DOI 10.1007/s10875-005-4088-0

The original version of the article unfortunately contained mistakes in Fig. 1. The correct version is presented below.

The online version of the original article can be found at <http://dx.doi.org/10.1007/s10875-005-4088-0>.

X. Cheng · Y.-h. Liao (✉) · H. Ge · B. Li · J. Zhang · J. Yuan ·
M. Wang · Y. Liu · Z. Guo · J. Chen · J. Zhang
Laboratory of Cardiovascular Immunology, Institute of Cardiology,
Union Hospital, Tongji Medical College of Huazhong University of
Science and Technology, Wuhan 430022, China
e-mail: liaoyh27@hotmail.com

L. Zhang
Department of Internal Medicine, University of Michigan Medical
School, Ann Arbor, MI 48109, USA

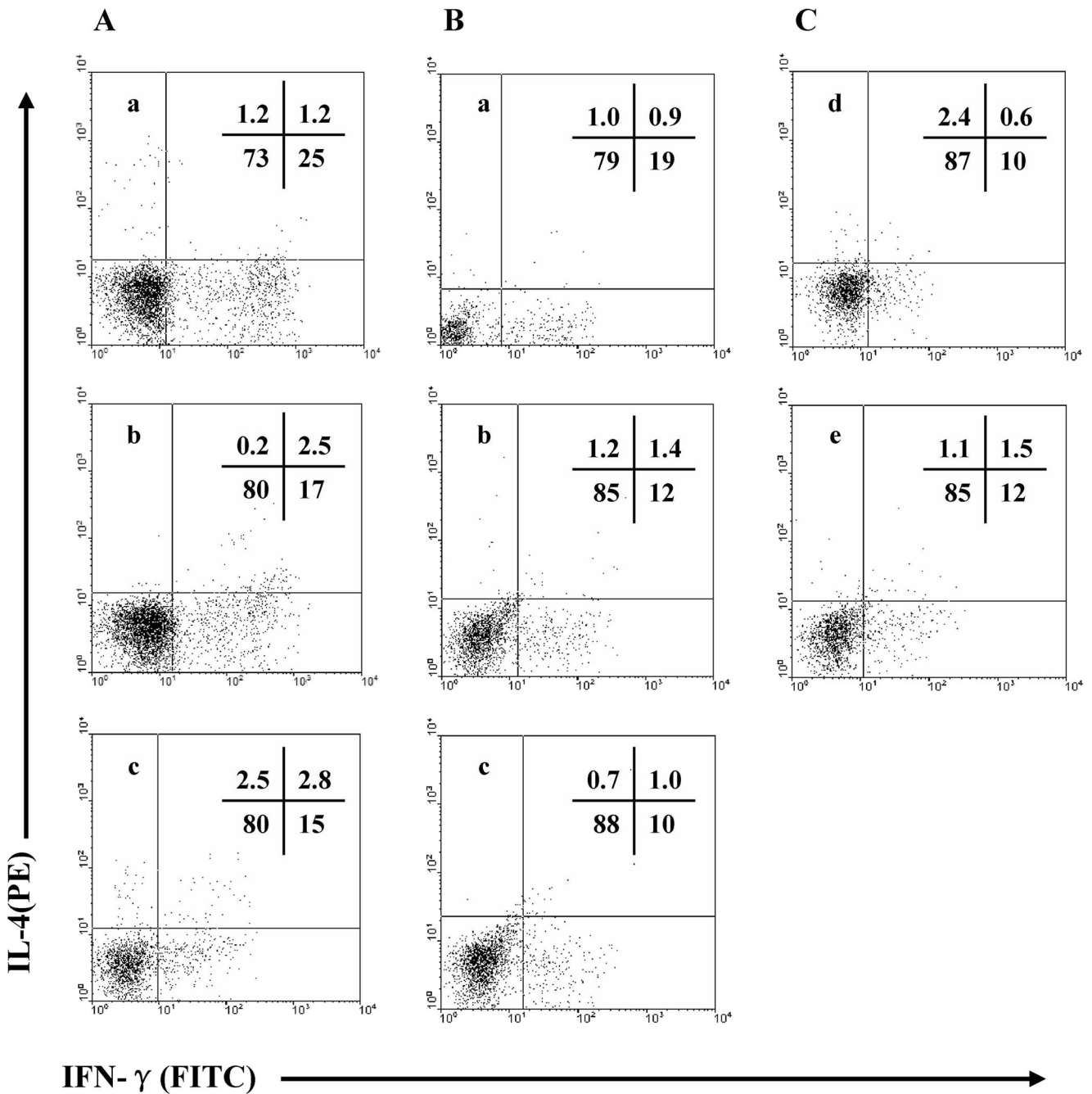


Fig. 1 The representative photographs of 3-color flow cytometric analysis of intracellular cytokines in CD4⁺ T-cells (gated to CD4). Cytokine-producing T-cells in AMI (A), UA (B) and control (C) group at the

different time points ((a), within 24 h; (b), on day 7 and (c), on day 30 after the onset of symptom; (d), group SA and (e), group CPS while coronary angiography)