



Correction to: Geraniin Inhibits LPS-Induced THP-1 Macrophages Switching to M1 Phenotype *via* SOCS1/NF- κ B Pathway

Xinxin Liu,^{1,2} Ji Li,^{1,2} Xiaohong Peng,³ Bo Lv,^{1,2} Peng Wang,⁴ Xiaoming Zhao,^{1,5,6} and Bo Yu^{1,2,6}

Correction to: *Inflammation* (2016) 39(4):1421–1433.
<https://doi.org/10.1007/s10753-016-0374-7>

After publication of our article [1], we found that the second images in the first row in Figure 2a were inadvertently replaced with the first image in Figure 2a. The published version of Figure 2a is therefore incorrect. The corrected version of the figure is shown below. The only change is in the first row of Figure 2a; the rest of the figure is identical to the published version. We apologize for this oversight and for any confusion that it has caused.

The online version of the original article can be found at <https://doi.org/10.1007/s10753-016-0374-7>

¹ Department of Cardiology, 2nd Affiliated Hospital of Harbin Medical University, Harbin, 150001, China

² Key Laboratory of Myocardial Ischemia, Ministry of Education, Harbin Medical University, Harbin, 150001, China

³ Heilongjiang Province Lumber Industry General Hospital, Harbin, 150040, China

⁴ Engineering Research Center of Forest Bio-preparation, Ministry of Education, Northeast Forestry University, Harbin, 150040, China

⁵ Department of Cardiology, Vanderbilt University Medical Center, Nashville, TN 37232, USA

⁶ To whom correspondence should be addressed to Xiaoming Zhao at Department of Cardiology, Vanderbilt University Medical Center, Nashville, TN 37232, USA. E-mail: David.Zhao@Vanderbilt.Edu; and ; dryu_hmu@163.com

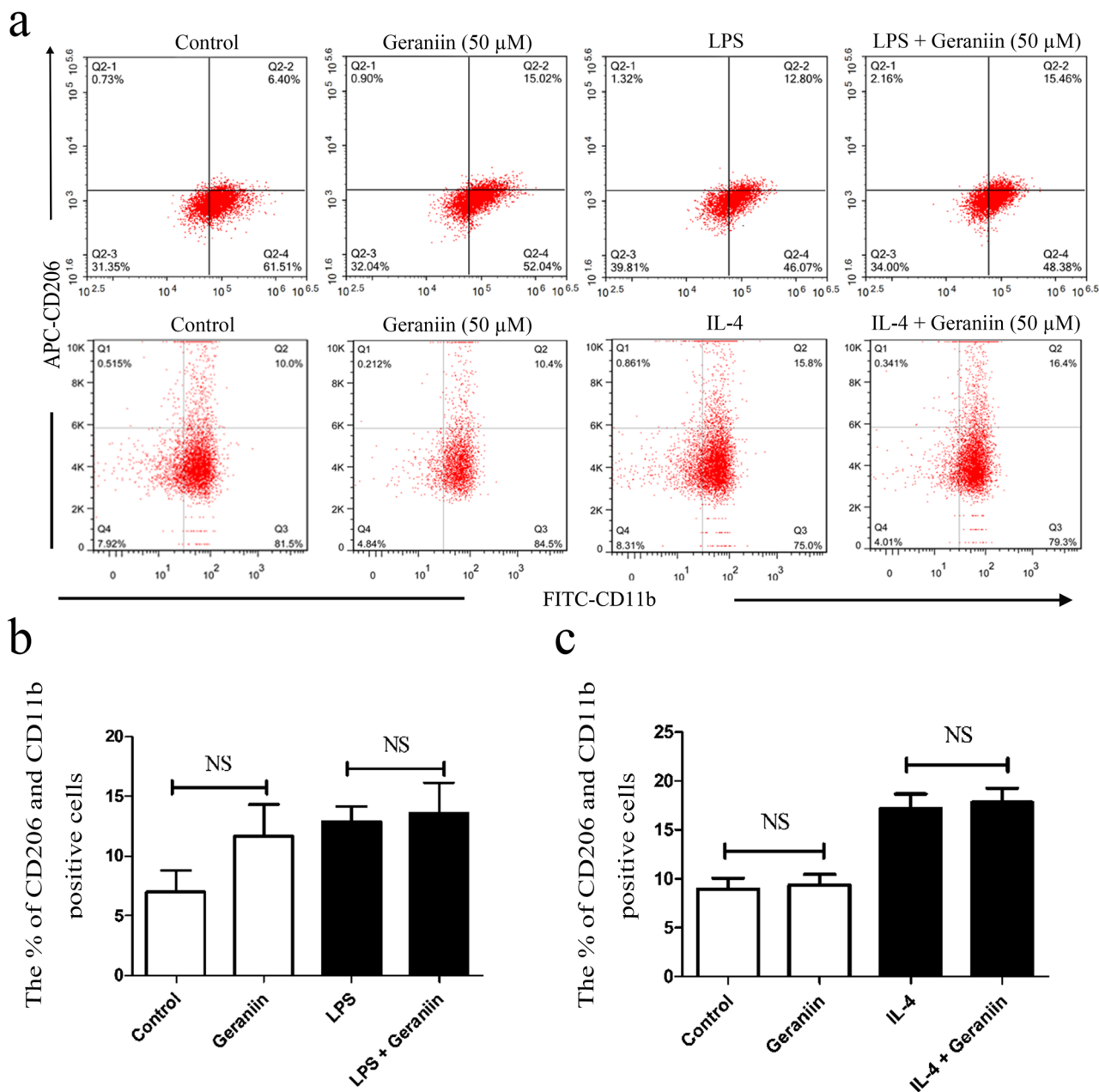


Fig. 2. **a** The percentage of M2-polarized macrophages was analyzed by measuring CD206⁺/CD11b⁺ cells using flow cytometry, and representative images of 3 independent experiments were shown. The cells were treated with geraniin (50 μM) for 2 h prior to the addition of either LPS or IL-4 (20 ng/mL) and then incubated for 24 h. **b, c** Data are means ± SD from 3 separate experiments, and the percentage of CD206⁺/CD11b⁺ cells was statistical analyzed.

REFERENCE

phenotype via SOCS1/NF-κB pathway. *Inflammation*. 39 (4): 1421–1433. <https://doi.org/10.1007/s10753-016-0374-7>.

1. Liu, X., J. Li, X. Peng, B. Lv, P. Wang, X. Zhao, and B. Yu. 2016. Geraniin inhibits LPS-induced THP-1 macrophages switching to M1