



CORRECTION

Correction to: Categorizing the influences of two large seabird colonies on island freshwater ecosystems in the Northwest Atlantic Ocean

Matthew P. Duda · Neal Michelutti · Xiaowa Wang · John P. Smol

Published online: 26 January 2021
© Springer Nature Switzerland AG 2021

Correction to: *Hydrobiologia*
<https://doi.org/10.1007/s10750-020-04498-2>

original article has been corrected and the correct display of Fig. 1 is also published here.

Due to an unfortunate mistake during the production process, the inset map in Fig. 1a is missing. The

The original article can be found online at <https://doi.org/10.1007/s10750-020-04498-2>.

M. P. Duda (✉) · N. Michelutti · J. P. Smol
Paleoecological Environmental Assessment and Research
Lab (PEARL), Department of Biology, Queen's
University, Kingston, ON K7L 3N6, Canada
e-mail: 16mpd3@queensu.ca

X. Wang
Aquatic Ecosystem Protection Research Division,
Environment and Climate Change Canada, Burlington,
ON L7S 1A1, Canada

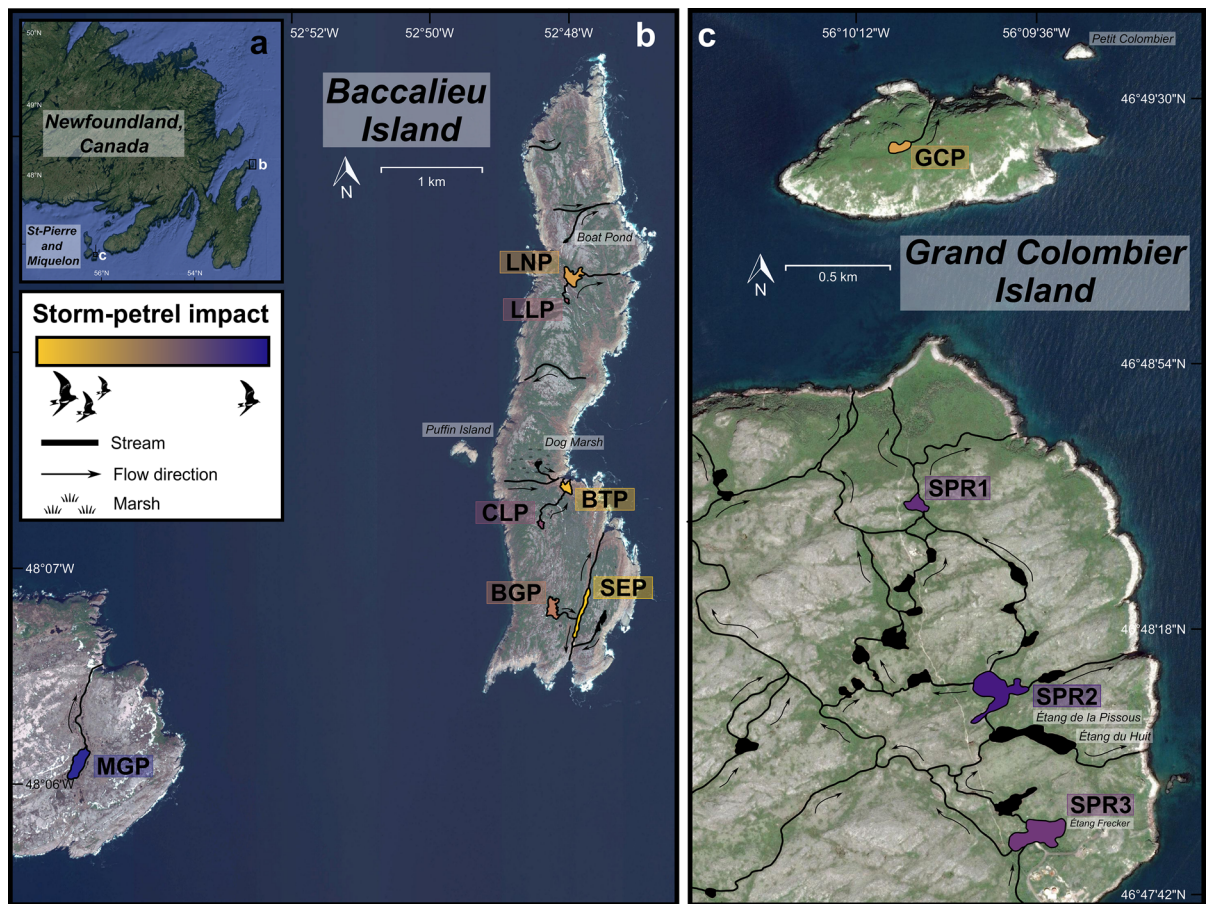


Fig. 1 Map of study ponds and inferred storm-petrel impacts. **a** Map of Eastern Newfoundland with the locations of **b** Baccalieu Island in Newfoundland and Labrador, Canada and **c** Grand Colombier Island, St. Pierre and Miquelon, France.

All studied ponds are presented in the colour of relative to impact as determined using a PCA (Fig. 5), and unstudied ponds are in black. Table 1 lists the study location names in full

Publisher's Note Springer Nature remains neutral with regard to jurisdictional claims in published maps and institutional affiliations.