



# The MINOUWApp: a web-based tool in support of by-catch and discards management

Lorenzo D'Andrea · Aida Campos · Karim Erzini · Paulo Fonseca · Simone Franceschini · Stefanos Kavadas · Irida Maina · Francesc Maynou · Tommaso Russo

Received: 4 April 2020 / Accepted: 22 October 2020 / Published online: 9 November 2020  
© The Author(s) 2020

**Abstract** Current fishing practices often do not allow adequate selection of species or sizes of fish, resulting in unwanted catches, subsequently discarded, with the consequent negative effects on both marine communities and fisheries profitability. The cross-analysis of

density patches of potential unwanted catches and distribution of fishing effort can support the identification of spatial-temporal hot-spots in which the fishing pressure should be reduced to limit the amount of discards. The MinouWApp represents a technological and

## Highlights

- A web-based tool to support management strategies of unwanted catch mitigation
- Interactive maps to inspect fishing fleet dynamics and areas of unwanted catches
- Exploitation patterns appraisal with a focus on the spatiotemporal dimensions

## Software availability

- Name of Software: MinouWApp
- Description: A web-based tool to examine the spatial/temporal dynamics of the fishery system, particularly in the context of discard-reducing policies
- Developer: Lorenzo D'Andrea
- Funding Source: H2020 project “Science, Technology and Society Initiative to Minimise Unwanted Catches in European Fisheries” (MINOUW - <http://minouw-project.eu/>)
- Source Language: R, html, CSS
- Supported Systems: Unix, Linux, MacOS, Windows
- License: [Attribution-ShareAlike 4.0 International \(CC BY-SA 4.0\)](https://creativecommons.org/licenses/by-sa/4.0/)
- Availability: <https://github.com/d-lorenz/minouWApp> (source code) - <https://minouw.shinyapps.io/minouWApp/> (live demo)

L. D'Andrea (✉) · S. Franceschini · T. Russo  
Università degli studi di Roma Tor Vergata (UTV), Via della Ricerca Scientifica 1, 00133 Rome, Italy  
e-mail: Lorenzo.DAndrea@uniroma2.it

S. Franceschini  
e-mail: Simone.Franceschini@uniroma2.it

T. Russo  
e-mail: Tommaso.Russo@uniroma2.it

A. Campos · K. Erzini · P. Fonseca  
Centre of Marine Sciences (CCMAR), Universidade do Algarve,  
Campus de Gambelas, 8005-139 Faro, Portugal

methodological framework to bring different, and structurally complex, sources of georeferenced data together into a simple visual interface aiming to interactively explore temporal ranges and areas of interest. The objective is to improve the understanding of fisheries dynamics, including discards, thus contributing to the implementation of discard management plans in a context of participative, ecosystem-based fisheries management strategies.

**Keywords** Fishing footprint; · Resource distribution; · Interactive application; · Participative management; · Landing obligation; · Decision support

## Introduction

Balancing commercial exploitation of marine resources and environmental protection represents one of the main global issues and probably the greatest challenge in fisheries science (Nelson and Burnside 2019). In a context of climate change, ecosystem degradation and population growth that contribute to impair the effectiveness of management strategies (Sumaila et al. 2011; Cheung et al. 2013), credible advice for policy-making depends on ensuring timely access to relevant data resulting from public-funded research, as recommended by the European Commission (2012) and the “European Code of Conduct for Research Integrity” (ALLEA 2017). The development of interactive applications storing spatial data about the distribution of human activities is essential to allow exploring their overlap and impact on marine ecosystem resources (Halpern et al. 2008). One

of the main fisheries-related impacts is historically represented by the practice of discarding during fishing operations. Within the new Common Fisheries Policy (CFP—[https://ec.europa.eu/fisheries/cfp\\_en](https://ec.europa.eu/fisheries/cfp_en)), discarding is defined as “the practice of returning unwanted catches (UWC) to the sea, either dead or alive, because they are undersized, due to market demand, the fisherman has no quota or because catch composition rules impose this.” It is largely acknowledged that UWC and discards cause unacceptable damage to the marine communities since they represent an additional, usually unaccounted source of mortality for the stocks and a threat to the ecosystems. Discarding is a pervasive practice in fisheries, and it is estimated that globally, discards account for between 10 and 23% of total catches (Guillen et al. 2018; Pérez Roda et al. 2019). According to these concerns, one of the more recent initiatives of the European Community towards marine resource protection and fisheries optimization is represented by the strategy towards minimization of UWC through the implementation of a landing obligation (LO), i.e., the interdiction of discarding, for commercial species subject to output control measures such as the definition of total allowable catch (TAC) or minimum conservation reference size (MCRS).

Since the implementation of the CFP of the European Union (EU) in January 1983, the European Commission has repeatedly addressed the issue of discards (EC 1998; EC 2002; EC 2007; EC 2009). The LO was introduced in 2013 with implementation from 2015 (EC 2013); since then, de minimis exemptions have been established to this regulation for a high number of species and ICES regions, including the Mediterranean

---

A. Campos  
e-mail: [acampos@ipma.pt](mailto:acampos@ipma.pt)

K. Erzini  
e-mail: [kerzini@ualg.pt](mailto:kerzini@ualg.pt)

P. Fonseca  
e-mail: [pfonseca@ipma.pt](mailto:pfonseca@ipma.pt)

A. Campos · P. Fonseca  
Instituto Português do Mar e da Atmosfera (IPMA), Avenida  
Alfredo Magalhães Ramalho 6, 1495-165 Algés, Portugal

S. Kavadas · I. Maina  
Hellenic Centre for Marine Research (HCMR), Institute of Marine  
Biological Resources and Inland Waters, 46.7 km Athens Sounio  
ave. P.O. Box 712, 19013 Anavyssos/Attiki, Greece

S. Kavadas  
e-mail: [stefanos@hcmr.gr](mailto:stefanos@hcmr.gr)

I. Maina  
e-mail: [imaina@hcmr.gr](mailto:imaina@hcmr.gr)

F. Maynou  
Institut de Ciències del Mar (CSIC), Psg Marítim de la Barceloneta,  
37-49 08003 Barcelona, Spain  
e-mail: [maynouf@icm.csic.es](mailto:maynouf@icm.csic.es)

and the ICES areas VIII and IX, (EU 2018a; EU 2018b). Although under certain conditions it allows fishers to continue to discard species that would otherwise be subject to the LO, this will not prevent its full implementation in the coming years (Damalas 2015).

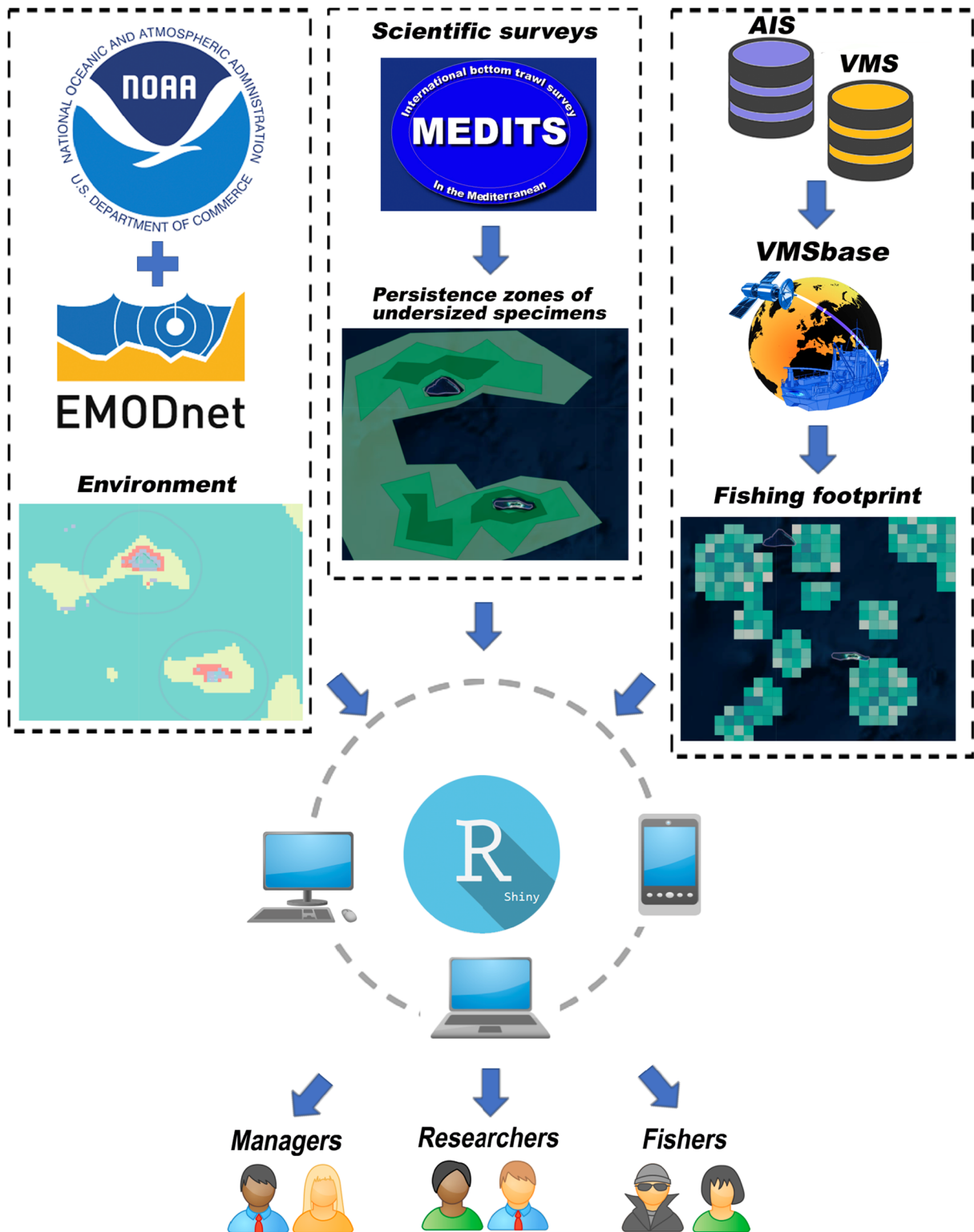
It is well documented that UWC, the reason for discarding, occur as a result of fishers' choices at various stages of the fishing process (i.e., fishing strategies and tactics), and thus discarding patterns vary widely across space, time, fisheries, gears, and species (Adams et al. 2019; Chagaris et al. 2019; Nelson and Burnside 2019; Paradinas et al. 2016; Pennino et al. 2017; Rochet et al. 2014). It has been repeatedly demonstrated that discard patterns are motivated by the combination, in time and space, of two main components: (1) the distribution of density patches of potential UWC-prone species and (2) the distribution of the fishing effort. For example, density patches of potential UWC could be nursery areas of demersal fish, spawning aggregations of pelagic species or the occurrence of endangered species. These patches are characterized by spatial/temporal dynamics according to the life histories of the different species, the characteristics of the environment, and the distribution of the fishing effort (with particular reference to bottom otter trawling), which is the result of complex socio-economic drivers and interactions among fleets (Preciado et al. 2019; Russo et al. 2014). The inclusion of discards information into a spatial management perspective is in line with management procedures such as the common framework for Maritime Spatial Planning in Europe ([https://ec.europa.eu/maritimeaffairs/policy/maritime\\_spatial\\_planning\\_en](https://ec.europa.eu/maritimeaffairs/policy/maritime_spatial_planning_en)), representing a potentially ideal and effective approach to contribute to discard mitigation (Maina et al. 2018), and should be incorporated in discard management plans. The cross-analysis of fishing effort patterns and fish distribution can support the identification of spatial-temporal hot-spots (Maina et al. 2016), defined as areas and periods, in which the fishing pressure should be reduced to limit the amount of discards and the corresponding impact on the total biomass, species composition and diversity of the entire fish community determined by the discard/by-catch process (Eliassen and Bichel 2016; Pointin et al. 2018). This approach is also versatile because it can be tailored to each fishery or even species within a fishery.

According to this rationale, one of the key actions within the H2020 project MINOUW ("Science, Technology and Society Initiative to Minimise Unwanted Catches in European Fisheries"—<http://minouw-project.eu/>) consisted in assessing the spatial distribution of

fishing effort in relation to areas of potential high discards. This was carried out in selected case studies by exploring remote vessel tracking data (VMS—Vessel Monitoring System/AIS—Automatic Information System) in combination with nursery and/or sensitive habitat maps. Here, we present the development approach and the design choices we employed in the context of the MINOUW program, applying the following workflow, data preparation and dissemination, to a total of seven Case Studies within the European waters (<http://minouw-project.eu/case-studies-new/>). As the purpose of this application is to demonstrate its potential to provide a framework for analysis, and also due to confidentiality purposes regarding these data, hereafter, a fictional case study near the Palmyra Atoll will be used as a reference example. The MinouwApp is open source and freely available with the fictional case study preloaded as a blueprint of the input requirements and formats. The complete code and the sample datasets can be downloaded from the Github repository (<https://github.com/d-lorenz/minouwApp>). The application can be loaded locally executing the source code, as is or eventually customized and adapted to new case studies, or it can be examined online with the live demo (<https://minouw.shinyapps.io/minouwApp/>).

### Development approach

A web-based application was devised to allow for the visualization and the cross-analysis of different layers of metadata (Fig 1). The information to be used should aggregate data from multiple sources, comprising (1) maps of high-density patches of potential UWC (see "Unwanted catches" section), such as nursery areas of demersal fish, spawning aggregations of pelagic species or areas of distribution of endangered species. These maps can be obtained from routine trawl surveys (MEDITS: Mediterranean International Trawl Surveys, Bertrand et al. 2002; ICES-IBTS: (Atlantic) International Bottom Trawl Surveys, Niels et al. 2001), as well as national surveys carried out either in research and commercial vessels at the scope of the European Data Collection Framework (DCF) and, most importantly, fishery-dependent data obtained from vessel logbooks (2) habitat maps ("Habitat data" section), including sea bottom depth and substrate composition (e.g., EMODnet Seabed Habitats layers, <https://www.emodnet-seabedhabitats.eu/>); (3) fishing effort maps



**Fig. 1** Representation of the main data sources integrated into the MinouWApp and of the main end users accessing the outputs. The logo of MEDITS, which is the main scientific survey carried out annually in

the Mediterranean Sea to monitor the state of demersal fishery resources (Bertrand et al. 2002), is used here as a convenient example for whatever source of reliable information about the distribution of UWC

derived from AIS and VMS data (“Fishing footprint” section), the two main remote tracking devices currently used in fisheries science, providing high-resolution information on vessel activities.

The application described in this paper allows the inspection of the main components driving the patterns of discarding, explicitly illustrating their variability on the spatial and temporal dimensions. Namely, a series of overlap analyses to produce maps showing areas with a high probability to produce high discard rates of either commercial or by-catch species. The potential applications of this tool are related to the different end-users accessing it: (1) to fishers and related industry (e.g., ship-owners, fish processing, and marketing), which can use these maps to adapt their fishing strategies in compliance with the LO. Whether this can be provided in an almost real-time basis depends on whether georeferenced data on landings and discards from fishers logbooks are timely updated; (2) to managers, in support of informed management decisions such as the implementation of spatial closures and fisheries-restricted areas; (3) to researchers, by providing modelling approaches to estimate the potential effects of different management scenarios. Consequently, as all the stakeholders have access to the same spatially explicit information and share a common platform, they are therefore empowered by the opportunity to co-create possible management solutions.

From a technical point of view, the application described in this paper, called MinouwApp, is based on Shiny (Chang et al. 2015), an R package to build interactive web apps straight from R, which is the most widespread statistical environment in fisheries science (<https://www.r-project.org/>). Several publications of Shiny web applications, covering a wide range of scientific fields, were made available in recent years. The ones dedicated to spatial data and including GIS database include a web-based mapping application for precision farming (Jahanshahi and Shariff 2014) and a web-based screening model for climate risk to water supply systems in the northeastern USA (Whateley et al. 2015).

The MinouwApp integrates not only a series of geodatabases, independently obtained by different MINOUW teams of researchers with different methods and data sources, but also layers of spatial information coming from other sources, including open-access data and results from EU research projects.

## Design choices

The protocol of data analysis has been arranged, for each case study, in three subsequent steps: data collection, processing, and usage (Fig. 2). During the data collection step, all the datasets (detailed in the following sections) required for downstream processing were compiled and harmonized. The data processing step is responsible for the transformation of the raw data on the individual (vessel’s) fishing activity into an aggregated footprint of the fishing. This is a mandatory step for two different reasons: first, because both the desired output of the project and the customarily adopted methods of analysis involve the use of data aggregated at the fleet level; secondly, the individual fishing activity includes personal information, whose disclosure we chose to avoid for reasons of confidentiality. Finally, the processed datasets are properly wrapped into a single Shiny App package and loaded online on the ShinyApps.io cloud service to be made available to authorized users.

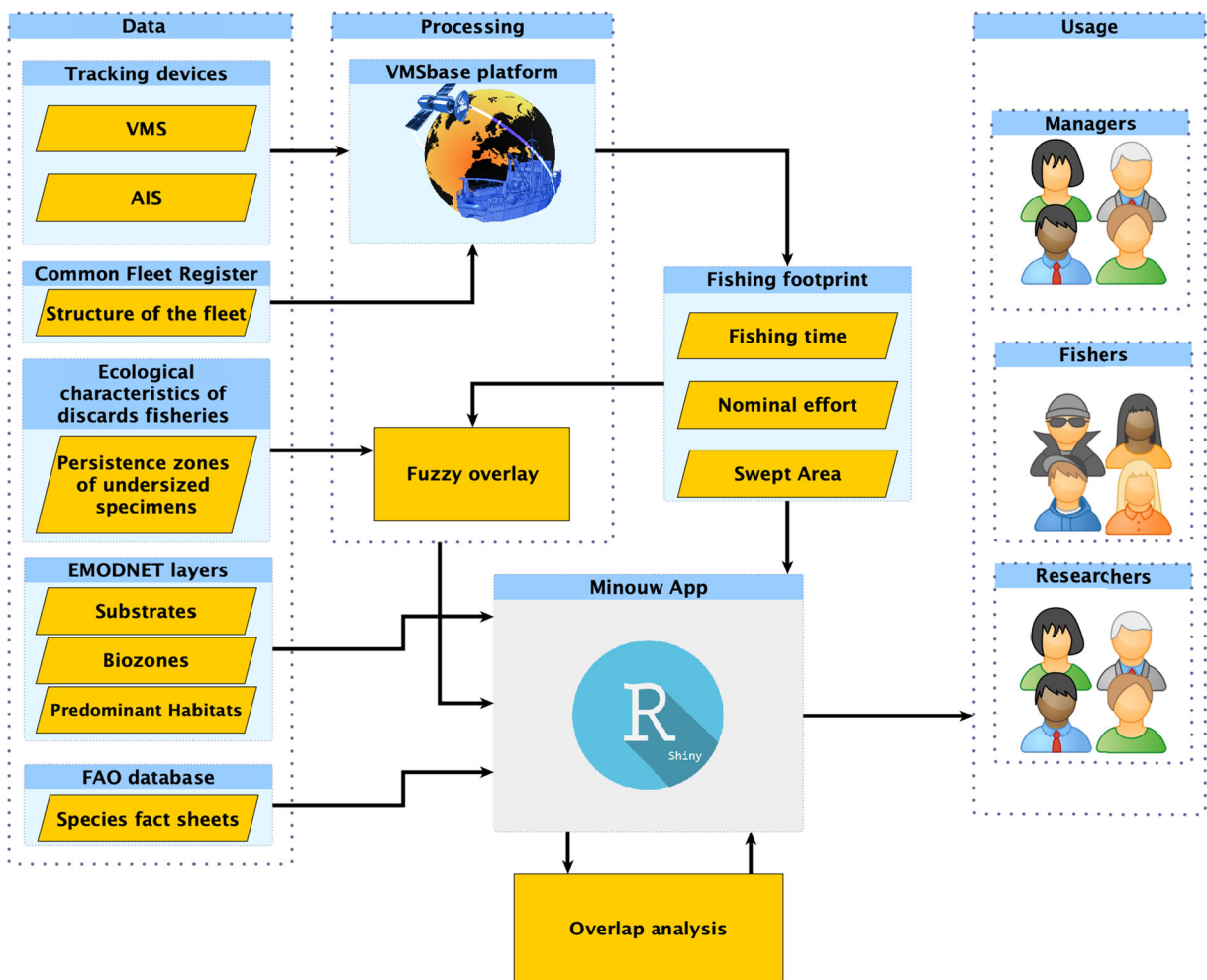
## Data

To conduct a complete set of analyses, and to fulfil all the required steps of the MinouwApp workflow, several sources of information are required, and the mandatory datasets are described in the following subsections.

### *Boundaries and spatio-temporal units of the area of study*

The geographical boundaries of each case study are delimited by a shapefile composed of a polygon layer enclosing all the maritime surfaces to be assessed. A regular grid of rectangular cells, built on the extent of the former shapefile, is another essential object needed to define the spatial dimensions of the study. Each cell of the grid, associated with the corresponding C-Square string (Rees 2003), will become the basic spatial unit to which any further computed measure will be related.

The required dataset is temporally heterogeneous, and usually collected or organized at multiple temporal scales: survey data, which are the foundation for the UWC, are based on annual or seasonal surveys or fishing logbooks; VMS/AIS data are logged with a frequency ranging from minutes to hours but then aggregated at the monthly scale; the available



**Fig. 2** Schematic representation of data- and workflow regarding the preparation and deployment of each case study

output on the MinouwApp is aggregated quarterly and yearly for visualization purposes. The patterns of effort are the more dynamic effect accounted in the system, while the UWC maps are assumed to be more stable across seasons/year (with the necessary precautions based on individual species characteristics). Being the fuzzy relationship computed quarterly or yearly, the general guideline is to employ a coherent temporal range between the two time-series with a complete overlap between the two sets, since the fuzzy-product effort/UWC will be applied on the same time-window (each quarter or year).

#### *Habitat data*

The habitat data in this application is a collection of measured or modelled information to illustrate

the bottom floor features of the area of study in terms of seabed characteristics and bathymetric profile. It is downloaded, as a shapefile with multiple attribute fields, from the Seabed Habitats portal of the EModNet project (<http://www.emodnet.eu/>). The raw seabed features are clipped with the case study boundary shapefile and only the “Biozone,” “Substrate,” “EUNIS classification,” and “MSFD habitats” fields are kept. The second dataset, i.e., the bathymetric profile, is obtained from the ETOPO1 database hosted on the NOAA website. The “marmap” R package (Pante and Simon-Bouhet 2013) which is dedicated to gathering and transforming bathymetric data was used to download and convert the bathymetric dataset to the raster layer format with the maximum available resolution of one degree.

### Fleet register

The structural characteristics of any fishing vessels actively engaged in the case study area should be gathered from a dedicated repository. Within the MINOUW project, the European fleet register online database available on the Fleet Register On the Net (FRONT, <http://ec.europa.eu/fisheries/fleet/index.cfm>) website was used. Assuming that this source of information is available, the final product is arranged as a table including the fields about the vessel identification number, length over all (LOA), horsepower, and main and secondary fishing gear.

### Fishing footprint

For each case study, the fleet was defined in terms of fishing vessels composition and characteristics. The fishing footprint was estimated at a monthly scale, for the period 2012–2016, using all the VMS/AIS available data, following the workflow of the VMSbase platform (Russo et al. 2014; Russo et al. 2016). The fishing footprint was then coupled with habitat maps to identify the hot spots of discards production, based on two different overlap approaches (see details in “Fleet register,” “Fuzzy overlay,” and “Overlap analysis” sections).

The raw VMS/AIS data of the fishing fleet involved in the studied fishery system is processed with the vmsbase R package (<https://cran.r-project.org/web/packages/vmsbase/index.html>) and archived as SQLite databases. Subsequently, the standardized fishing positions are used to prepare the aggregated effort metrics to be loaded on the MinouWApp. The fishing effort metrics computed are “Fishing Hours,” “Fishing Days,” “Nominal Effort,” and “Swept Area.” In more detail:

1. The Fishing duration was computed as the product of the number of fishing points (from VMS/AIS databases) by their time interval (10 min);
2. The Nominal Effort was computed as the product of the fishing days (FD) and the engine power (PW in kW) of each vessel. The total FD of each vessel for each month was computed using the R package fecR (Scott et al. 2017). For example, in case that a single gear is in use during a fishing trip, it was allocated 1 fishing day for each date with at least one point classified as “fishing activity” (e.g., one or more tows);

3. The Swept Area (SWA) was computed, for the case studies involving towed gears (trawling) according to Eigaard et al. (2016) and Russo et al. (2017) as follows:

$$SWA = OFS \times TL$$

where *OFS* is the trawl horizontal opening, i.e., distance between trawl wing tips, and *TL* is the length of the haul (in meters). While *TL* can be directly computed from interpolated pings corresponding to Fishing Points, *OFS* was estimated, for each fishing vessel length (LOA), using the following formula:

$$OFS = a \times LOA + b$$

The *a* and *b* parameters (respectively, slope and intercept of the linear link function) were selected, for each case studies, from Table 4 of Eigaard et al. (2016). The computation of the Swept Area was not carried out for the Case Studies involving active gears (i.e., Purse Seine).

### Unwanted catches

The last input demanded is the shapefiles of the UWC and the FAO factsheets for the studied species. The UWC shapefiles, created by the end users from georeferenced survey data, consist of a collection of geospatial layers depicting the potential zones of undersized organisms resulting from the computation of the Persistence Index (PI, Fiorentino et al. 2003). The UWC shapefiles can be prepared following the methodology proposed in Colloca et al. (2009). Briefly, a time series of juvenile densities is estimated from survey data with Bayesian kriging and afterwards, a geostatistical aggregation accounts for the density hot-spots. The resulting PI measures the number of times an area is classified as a hot spot, for organisms under the minimum landing size, with reference to the total number of years in the time-series. Specifically, higher PI values mean higher hot spot occurrence throughout the time series. Otherwise, when the PI value is zero, a hot spot has never been observed. We employed single-species maps of areas of high juvenile density; however, other hot-spot identification criteria (i.e., endangered species or sensitive habitats) can be employed with the condition of being provided as a polygon shapefile of areas with potential UWC.

## Processing

The processing phase (Fig. 2) comprises two blocks of analyses carried out outside the MinouWApp. Each block is based on a published procedure, which was already applied and tested outside the MINOUW project, namely, the VMS/AIS processing and the Fuzzy Overlay technique. The integrated analysis of VMS and AIS data with the VMSbase platform is extensively documented in Russo et al. (2014) and Russo et al. (2016). The Fuzzy Overlay combines both fishing effort and UWC by taking into consideration two types of layers: (1) the spatiotemporal distribution of fishing effort and (2) the spatial distribution of UWC by each species under investigation. The use of the fuzzy logic technique has started gaining recognition in fisheries science in the last decades (e.g., Stelzenmuller et al. 2010; Kavadas et al. 2015). Fuzzy logic represents an extension of the classic binary logic, with the possibility of defining sets without clear boundaries of elements belonging to a given set (Malczewski 1999; Biacino and Gerla 2002). A Fuzzy Linear membership function was used to transform the values of each type of layer to a 0 to 1 possibility continuous scale. Linear transformations are commonly used in the fuzzification of deterministic criteria (Fisher 2000). The Fuzzy Linear transformation was applied between the minimum (min) and maximum (max) of the values distribution and is estimated by the formula:

$$\mu(x) = 0 \text{ if } x < \min, \mu(x) = 1 \text{ if } x > \max, \\ \text{otherwise } \mu(x) = \frac{(x-\min)}{(\max-\min)}$$

where  $x$  is the value in each cell (planning unit).

The spatial distribution of the combination of both fishing effort and UWC was derived as the fuzzy overlay of the two previously Fuzzy-transformed types of layers. Generally, there are several techniques used in a fuzzy overlay analysis, for investigating the relationships and quantifying the interactions. The combination approach used in this work was the Fuzzy Product (Zimmermann and Zysno 1980). The Fuzzy Product overlay type will, for each cell, multiply each of the fuzzy values for all the input criteria. Values close to 1 indicate areas with an elevated likelihood of intense fishing effort and UWC (at the same time). It should be noted that

despite the apparent similarity between the concepts of “fuzzy overlay” and “overlap analysis,” their functioning and purpose are different and complementary. While the overlap analysis is a GIS routine to select specific areas (according to the effort and UWC thresholds) and then merge continuous patches of cells, the fuzzy overlay performs a fuzzy transformation (it standardises the observed distributions, of both effort and unwanted catches, to be between zero and one) and applies a fuzzy product, to provide a combined representation of both the distributions.

## Usage and end-users

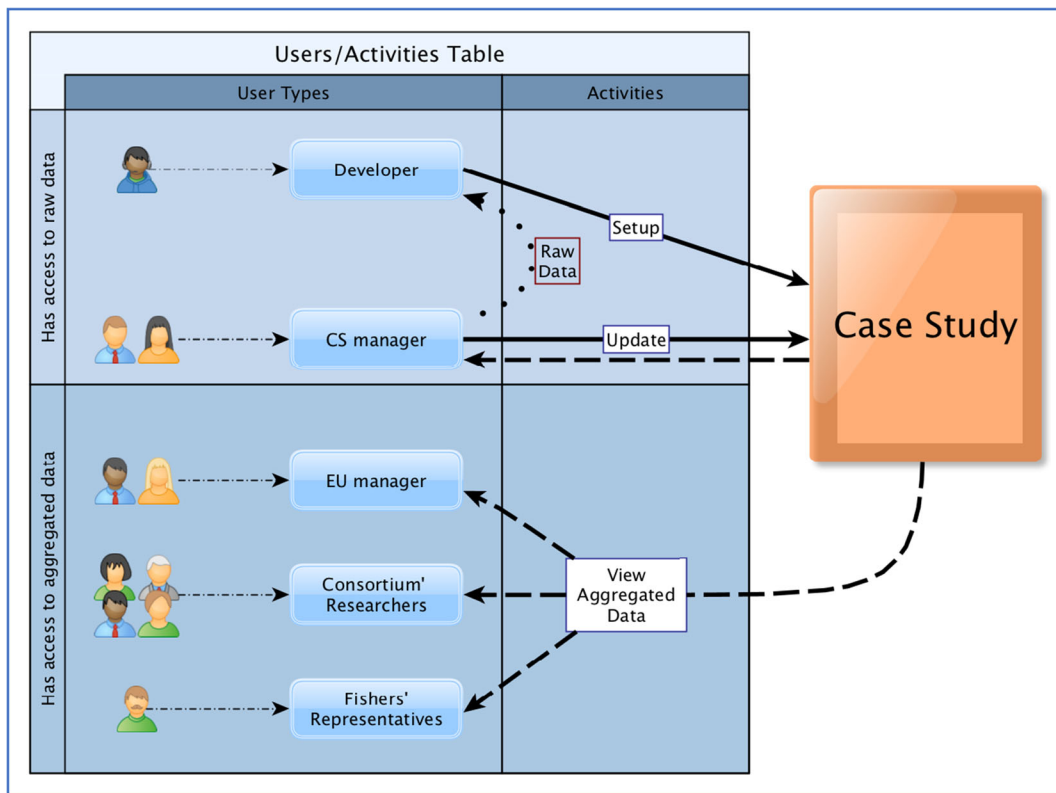
The application of the MinouWApp to each case study considered within the MINOUW project involved the developer of the MinouWApp and at least one researcher as “case study expert” (Figs. 1, 2, and 3). Raw data, including VMS positions (which are confidential), and AIS positions, were exchanged only between the developer team and the case study expert in order to avoid the inadvertent leak of sensitive data. At the end of the processing phase, the aggregated pattern of the fishing footprint was obtained from VMS and AIS data and uploaded into the MinouWApp.

With reference to the MinouWApp usage, it is possible to list three main groups of end users: managers, researchers, and fishers, whose interaction capabilities with the dataset are relegated to the aggregated data (since it is the sole information that is actually uploaded online). Furthermore, every single user must be individually authorized to access a specific case study.

## Implementation and panel structure

The MinouWApp is designed as a Shiny Dashboard. The dashboard consists of two main objects, a vertical sidebar on the left, which functions as a clickable menu, and the body of the page on the right, which shows the different interactive information related to the case study. The user can then navigate between the different information panels clicking on the corresponding menu buttons. In practice, the following options are available: “Overview,” “Effort Data,” “Unwanted Catches,”





**Fig. 3** Case study (CS) access rights schema and activity routes by user type. The developer and the CS managers oversee the setup and update of the CS data, while the other group of users is allowed access to the aggregated data only

“Fuzzy Overlay,” “Overlap Analysis,” “Wordbook,” and “References & Credits.”

Overview

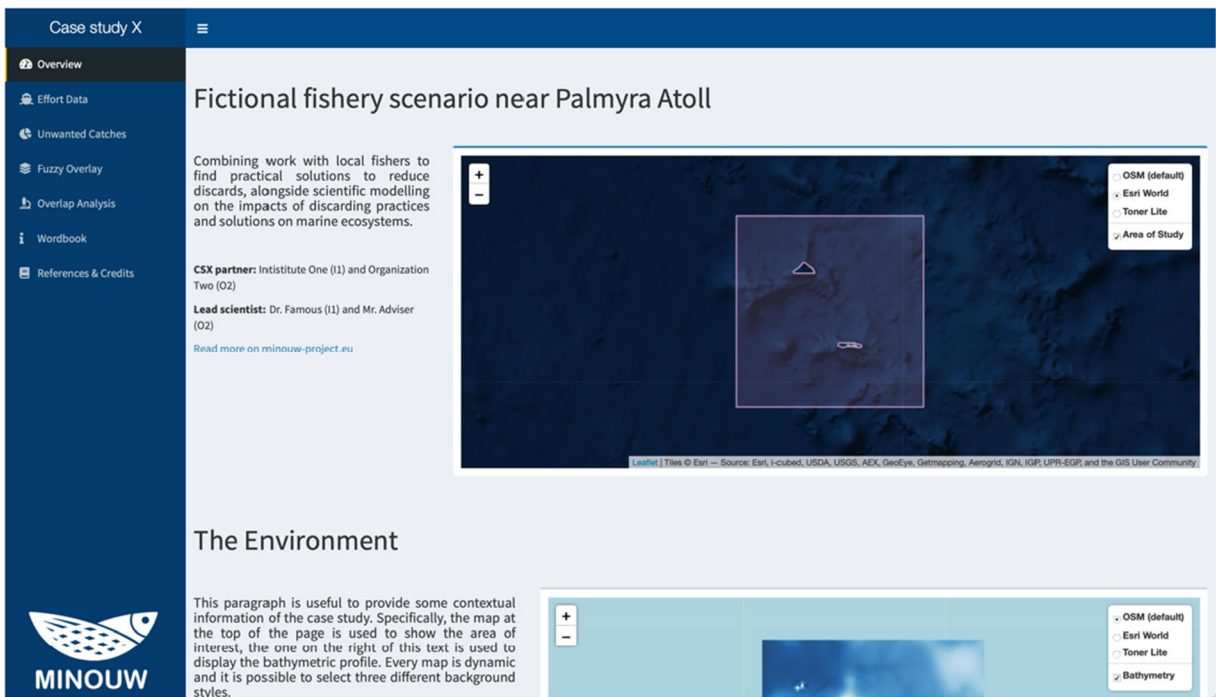
The “Overview” page (Fig. 4) is designed to supply the user with the basic information about the specific case study under examination, being divided into three subsections. The first corresponds to a brief description with scope and objectives, names of the scientific officer and partners, and an interactive map focused on the area of interest along with a highlight of the actual maritime zone that defines the spatial limits of the case study. The second contains a more detailed description of the fishing system under examination and two maps, one with the bathymetric profile of the area and the other with three different levels of information about the type of substrate and seabed category. The last subsection is used to report the relevant information about the fishing fleet and includes a text summary and a graphical representation of the fleet characteristics.

Effort data

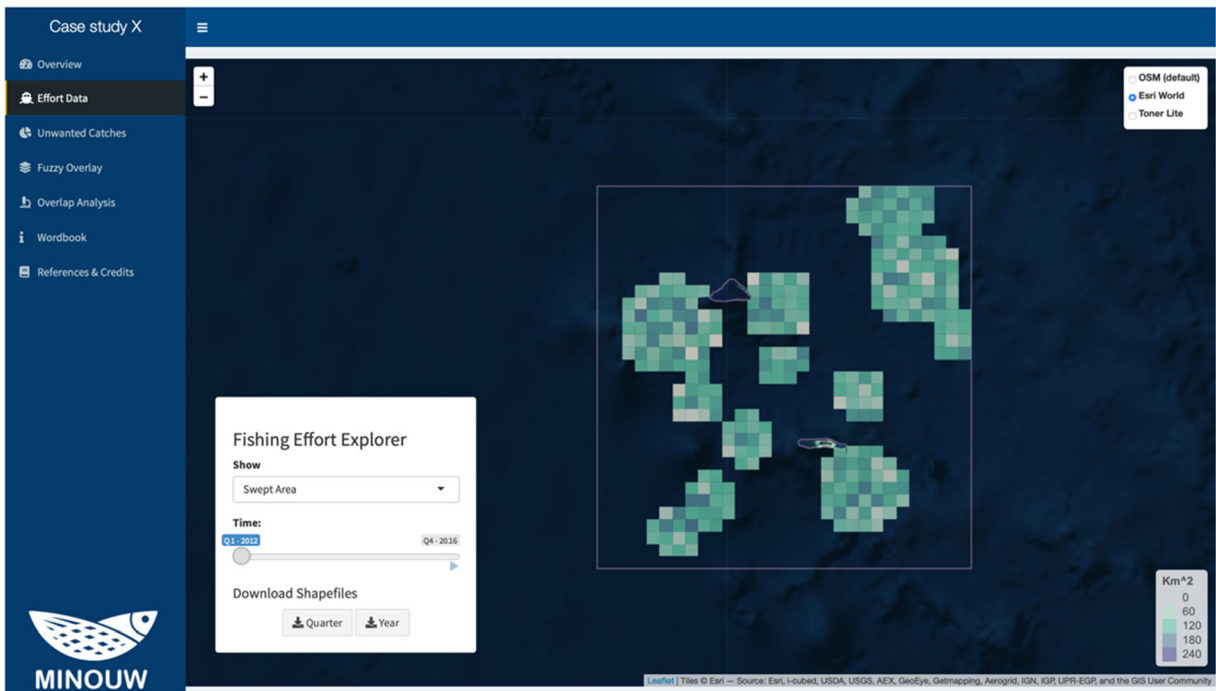
The “Effort Data” page (Fig. 5) provides a large interactive map to explore the spatial dynamics of the fleet through four different fishing effort metrics selectable by the user between Fishing Hours, Fishing Days, Nominal Effort, or Swept Area. The map shows the selected distribution as various shades of a colour ramp, darker blue and lighter green colours denoting higher and lower values, respectively. While the basic unit of the temporal resolution showed is the quarter, the user can download both the quarter and the yearly temporal aggregation. It is possible to change the time frame by moving the slider to select a different quarter or automatically animate the map clicking on the play button.

Unwanted catches

The “Unwanted Catches” page (Fig. 6) allows visualizing the UWC Map, which represents graphically the different areas where a number of catches below the



**Fig. 4** Screenshot of the Overview panel, with an example from the case study of bottom trawl fisheries in the fictional case study near Palmyra Atoll



**Fig. 5** Screenshot of the Effort data panel, with an example from the case study of bottom trawl fisheries in the fictional case study near Palmyra Atoll. In this example, the fishing effort is represented as the swept area (km<sup>2</sup>)



**Fig. 6** Screenshot of the Unwanted catches panel, with an example from the case study of bottom trawl fisheries in the fictional case study near Palmyra Atoll. In this example, the different

polygons are coloured with respect to the Persistence Index scale in the bottom right side of the map

minimum landing size (MLS) have occurred within the area of study. The color-coded shading represents the level of occurrence of UWC (Persistence Index), light colours for low persistence (the area is classified as hot-spot only in 1 year of the time-series) and darker colours for higher persistence (the area is classified as hot-spot every, or at least more than one, year of the time-series). The user can select and deselect the different species in display by clicking on the species three-code name on the top right menu of the map.

#### Fuzzy overlay

The “Fuzzy Overlay” page (Fig. 7) shows an interactive map with the results of the fuzzy overlay procedure. The interface displays the fuzzy product, on a single time frame, corresponding to the selected fishing effort metric and a species. The Fuzzy Overlay index is on a scale between 0 and, with zero meaning “no overlap” and one “total overlap.” The time frame can be chosen by the user using the slider on the fuzzy overlay explorer or automatically animated clicking the play button. It is

possible to download the data on both quarterly and yearly aggregated time frames.

#### Overlap analysis

Although the detailed cross-analysis of fishing effort and discards patterns is beyond the scope of this application, the MinouWApp interface allows producing some basic overlap analyses (Fig. 8). Namely, the user can:

- Select a measure of the fishing effort;
- Define a threshold range for the fishing effort measure;
- Select a species for the UWC layer;
- Define a threshold range for the UWC layer;
- Perform an overlay analysis between the area of UWC and the pattern of the fishing effort.

The MinouWApp will return, as a visual output, the union of the contiguous cells meeting the selected thresholds and a table of the main related statistics.



**Fig. 7** Screenshot of the Fuzzy overlay panel, with an example from the case study of bottom trawl fisheries in the fictional case study near Palmyra Atoll. In this example, the different cells are coloured with respect to the (0–1) index scale in the bottom right side of the map

Clicking on the button at the bottom of the page, the resulting spatial selection can be also downloaded as a shapefile.

#### Wordbook and references

The last two pages of the MinouWApp, “Wordbook” and “References & Credits,” report a collection of the basic knowledge relevant to the understanding of the MinouW Project, the MinouWApp, and the specific case study. Four panels are presented in the “Wordbook” page (Fig. 9): Measure of Effort, Unwanted Catches, Fuzzy Overlay, and Overlap Analysis. In each one of these panels, a brief explanation is provided on the underlying procedure employed to perform the analysis along with a short definition of the terms used. In the Unwanted catches panel, there are other subsections showing the FAO fact sheet of the species included in the case study.

The “Credits” page (Fig. 10), other than the acknowledgement of authorship and funding for the MinouW project, is a collection of the relevant literature to each section of the MinouWApp.

#### Discussions and conclusions

The estimation of the fisheries footprint and of the species’ geographical distribution represent two fundamental steps for a spatially based resource management system designed to achieve the sustainability of human activities in the marine space. Sustainability is, in turn, a multidisciplinary concept that involves environmental, socio-economic, and jurisdictional aspects. This means that minimizing human impacts at sea require the involvement of different actors, including scientists, managers, fishers, and other stakeholders, along with, considerable diversification of competences. Within the specific thematic of discard reduction, but also in the general context of fisheries management, there is an urgent need to seek practical solutions to address the complex issue of balancing human needs with sustainable exploitation of marine ecosystems. The current situation is additionally complicated by both the inherent difficulties deriving from the interaction of a community with mixed know-how participating in the decision process and the essential non-triviality of the methodological approaches to be formulated and proposed to relieve the pressure on the biological resources. Another

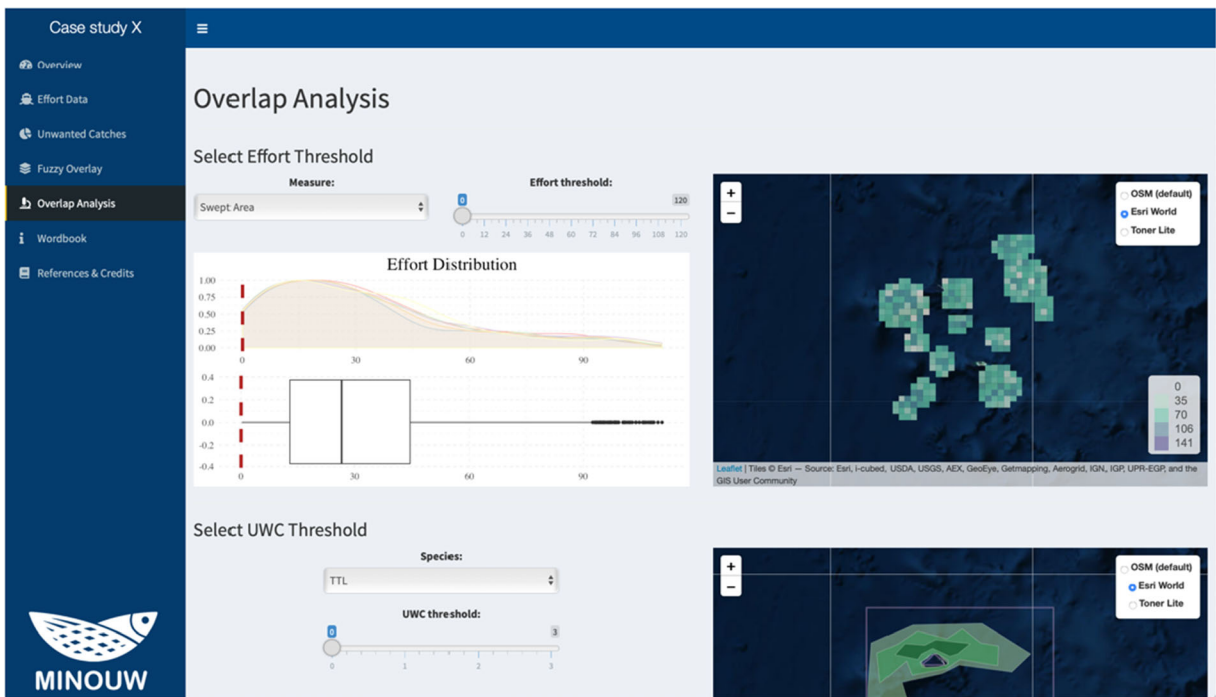


Fig. 8 Screenshot of the Overlap analysis panel, with an example from the case study of bottom trawl fisheries in the fictional case study near the Palmyra Atoll

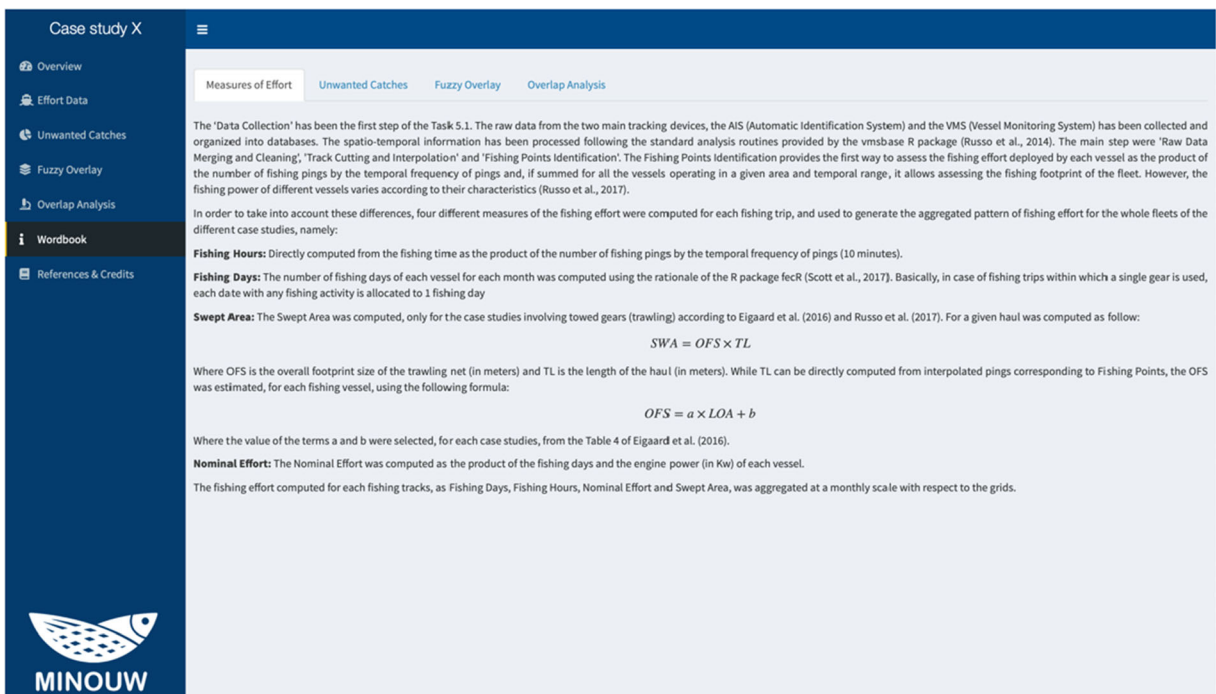
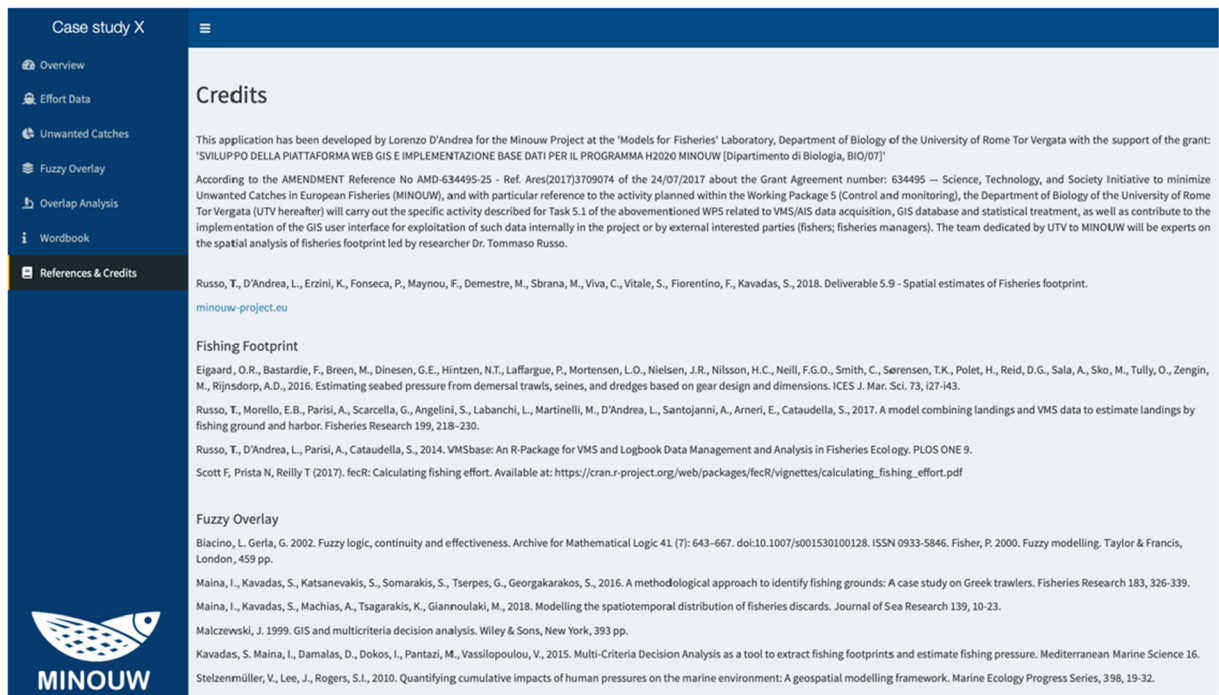


Fig. 9 Screenshot of the Workbook panel, with the explanation of the procedure for the computation of the different metrics applied to quantify the fishing footprint



**Fig. 10** Screenshot of the Credits panel

key aspect to highlight, for improved comprehension of the behavioural dynamics of a fishery system, is the emphasis to be recommended about the explicit consideration and the methodological inclusion of the spatial dimension and of the advantages coming from its leverage.

In consideration of the stated assumptions, the development, distribution, and update of an operational platform are critical for (1) a deeper insight on fishing effort, bycatch, discards, and stock spatial distribution and their relationship; (2) facilitating data analysis and presentation of crucial findings of ongoing research; (3) identifying hot-spot areas for priority management intervention; and (4) providing managers with an operational tool in support of decision. The MinouWApp represents one of the first attempts towards this, through the design of a technological and methodological framework for the inclusion and harmonization of all the mentioned objectives. Furthermore, the purpose of this application is to equip the involved parties with a convenient “control centre” for an express acknowledgment of the fishery’s structure (fished populations and fleet interaction), able to provide a straightforward appraisal of the current circumstances of resource exploitation on the spatiotemporal dimensions. Specifically, the MinouWApp implements:

- The main dashboard to summarize the main typical feature of the fishing fleet together with the details of the environment in which it operates;
- Three main GIS mapping tools to inspect, first, the dynamics of the fishing fleet on the basis of different measures of effort; second, the geographical distribution of the studied species and the major areas of potentially unwanted catches; third, the combination of the previous two descriptive informational layers for the integrated evaluation of fish and fishers spatial concentrations;
- An adequate interface to perform the fundamental operations of selection, overlap, and union of the geographical areas of principal interest;
- A simple, yet precise, glossary page for a succinct explanation on both the terminology used and the essential biological aspects of the species in study.

The description of the MinouWApp and the example of its application to the provided fictional case study demonstrate the feasibility in coordinating large amounts of data from different sources. These include data collected within scientific surveys, generated through remote tracking devices onboard fishing vessels as well as open-access data from different origins, into a visual interface allowing to interactively select temporal ranges and areas of interest

and return maps (with related statistics) that can both support management strategies, such as the development of regional Discard Plans, and drive fishers in adapting their behaviour to meet legislation requirements. In addition, the MinouWApp can be further tailored to support additional aspects of fisheries spatial management from the supervision of marine management areas to the designation of fisheries restricted areas or the identification of vulnerable marine ecosystems (VME), in line with CFP and MSFD objectives.

This application constitutes a framework for the inspection of discarding patterns and their main drivers. It represents a novel, participative approach in fisheries science (i.e., as a powerful Research & Innovation tool within a scientific support system, [https://ec.europa.eu/info/research-and-innovation/strategy\\_en](https://ec.europa.eu/info/research-and-innovation/strategy_en)), by offering an opportunity for managers, fishermen, scientists, and the public to be involved at a regional level in designing frameworks that improve global understanding of the ocean and incentivize long-term fisheries sustainability. Whether this information can be used in support of governance depends on whether short-term decisions are allowed, by providing georeferenced data on landings and discards in an almost real-time basis. Lastly, fisheries struggle to balance the exploitation of a publicly held resource (i.e., the fish) while maintaining the confidentiality and intellectual property of the fishermen. In fact, the general policy status tries to accommodate the different interests between publicly available knowledge, intellectual property, and confidentiality while avoiding hindering the research and the potential impairing of our capabilities to foresee, prevent, and treat environmental issues. Thus, we strived to provide all the necessary aspects of the dataflow for the MinouWApp as a publicly available platform (on the GitHub repository: <https://github.com/d-lorenz/minouw-app>) to be employed on future case studies.

**Acknowledgements** For constructive feedback on this manuscript we thank: Dr. Jordan Watson for his help in the review phases and writing improvements; and the anonymous reviewers.

**Authors' contribution** L.D. and T.R. conceptualized the application workflow and designed the interface; L.D. and S.F. prepared the case studies information and tested the software; L.D., A.C. K.E., P.F., S.K. I.M., F.M., and T.R. conceived and revised the methodology. All authors contributed to the data curation step and writing the manuscript.

**Funding** Open access funding provided by Università degli Studi di Roma Tor Vergata within the CRUI-CARE Agreement. This research has received funding from the European

Commission's Horizon 2020 Research and Innovation Programme under Grant Agreement No. 634495 for the Science, Technology and Society Initiative to Minimize Unwanted Catches in European Fisheries (MINOUW)

**Abbreviations** AIS, automatic identification system; CFP, common fisheries policy; EMODNET, European Marine Observation and Data Network; FAO, Food and Agriculture Organization; FD, fishing days; FRONT, Fleet Register On the Net; GIS, Geographic Information System; LO, landing obligation; LOA, length over all; MEDITS, MEDiterranean International Trawl Surveys; MSFD, Marine Strategy Framework Directive; NOAA, National Oceanic and Atmospheric Administration; OFS, overall footprint size; PI, persistence index; PW, engine power; SWA, SWept Area; TL, total haul length; UWC, unwanted catches; VME, vulnerable marine ecosystems; VMS, vessel monitoring system

**Open Access** This article is licensed under a Creative Commons Attribution 4.0 International License, which permits use, sharing, adaptation, distribution and reproduction in any medium or format, as long as you give appropriate credit to the original author(s) and the source, provide a link to the Creative Commons licence, and indicate if changes were made. The images or other third party material in this article are included in the article's Creative Commons licence, unless indicated otherwise in a credit line to the material. If material is not included in the article's Creative Commons licence and your intended use is not permitted by statutory regulation or exceeds the permitted use, you will need to obtain permission directly from the copyright holder. To view a copy of this licence, visit <http://creativecommons.org/licenses/by/4.0/>.

## References

- Adams, A. J., Shenker, J. M., Jud, Z. R., Lewis, J. P., Carey, E., & Danylchuk, A. J. (2019). Identifying pre-spawning aggregation sites for bonefish (*Albula vulpes*) in the Bahamas to inform habitat protection and species conservation. *Environmental Biology of Fishes*, 102, 159–173.
- ALLEA. All European Academies. (2017). The European code of conduct for research integrity, revised edition. Strasbourg: European Science Foundation.
- Bertrand, J., Gil De Sola, L., Papaconstantinou, C., Relini, G., & Souplet, A. (2002). The general specifications of the Medits surveys. *Scientia Marina*, 66(Suppl. 2), 9–17.
- Biacino, L., & Gerla, G. (2002). Fuzzy logic, continuity and effectiveness. *Archive for Mathematical Logic*, 41(7), 643–667.
- Chagaris, D., Allen, M., & Camp, E. (2019). Modelling temporal closures in a multispecies recreational fishery reveals tradeoffs associated with species seasonality and angler effort dynamics. *Fisheries Research*, 210, 106–120.
- Chang, W., Cheng, J., Xie, Y., Mcpherson, J., 2015. Shiny: Web Application Framework for R.
- Cheung, W. W. L., Sarmiento, J. L., Dunne, J., Frölicher, T. L., Lam, V. W. Y., Deng Palomares, M. L., Watson, R., &

- Pauly, D. (2013). Shrinking of fishes exacerbates impacts of global ocean changes on marine ecosystems. *Nature Climate Change*, 3, 254–258.
- Colloca, F., Bartolino, V., Jona, L. G., Maiorano, L., & Sartor, P. (2009). Identifying fish nurseries using density and persistence measures. *Marine Ecology Progress Series*, 381, 287–296.
- Damalas, D. (2015). Mission impossible: discard management plans for the EU Mediterranean fisheries under the reformed Common Fisheries Policy. *Fisheries Research*, 165, 96–99.
- EC. (1998). Council Regulation No 850/98 of 30 March 1998 for the conservation of fishery resources through technical measures for the protection of juveniles of marine organisms. *Commun: The Official Journal of the European Union*. <http://data.europa.eu/eli/reg/1998/850/oj>.
- EC (2002). Communication from the Commission to the Council and the European Parliament: On a Community Action Plan to Reduce Discards of Fish Commission of the European Communities. Brussels, 26.11.2002 COM(2002) 656 final.
- EC (2007). Communication from the Commission to the Council and the European Parliament: A Policy to Reduce Unwanted By-Catches and Eliminate Discards in European Fisheries. Brussels, 28.3.2007 COM(2007) 136 final.
- EC (2009). Green Paper on the Reform of the Common Fisheries Policy. Brussels, 22.4.2009 COM(2009)163 final.
- EC (2012). Commission Recommendation of 17.7.2012 on access to and preservation of scientific information. Brussels, 17.7.2012 C(2012) 4890 final.
- EC. (2013). *Regulation (EU) No 1380/2013 of the European Parliament and the Council of 11 December 2013 on the Common Fisheries Policy, amending Council Regulation (EC) No 1954/2003 and (EC) No 1224/2009 and replacing Council Regulation (EC) No 2371/2002 and (EC) No 639/2004 and Council Decision 2004/585/EC*. *Commun: Off. J. Eur.*
- EU (2018a). Commission Delegated Regulation (EU) No 2018/2033 of 18 October 2018 establishing a discard plan for certain demersal fisheries in South-Western waters for the period 2019–2021. *Off. J. Eur. Commun.*
- EU. (2018b). *Commission Delegated Regulation (EU) 2018/2036 of 18 October 2018 amending Delegated Regulation (EU) 2017/86 establishing a discard plan for certain demersal fisheries in the Mediterranean Sea*. *Commun: Off. J. Eur.*
- Eigaard, O. R., Bastardie, F., Breen, M., Dinesen, G. E., Hintzen, N. T., Laffargue, P., Mortensen, L. O., Nielsen, J. R., Nilsson, H. C., Neill, F. G. O., Smith, C., Sørensen, T. K., Polet, H., Reid, D. G., Sala, A., Sko, M., Tully, O., Zengin, M., & Rijnsdorp, A. D. (2016). Estimating seabed pressure from demersal trawls, seines, and dredges based on gear design and dimensions. *ICES Journal of Marine Science*, 73, i27–i43.
- Eliassen, S. O., & Bichel, N. (2016). Fishers sharing real-time information about “bad” fishing locations. A tool for quota optimization under a regime of landing obligations. *Marine Policy*, 64, 16–23.
- Fiorentino, F., Garofalo, G., De Santi, A., Bono, G., Giusto, G. B., & Norrito, G. (2003). Spatio-temporal distribution of recruits (0 group) of *Merluccius merluccius* and *Phycis blennoides* (Pisces, Gadiformes) in the Strait of Sicily (Central Mediterranean). *Hydrobiologia*, 503, 223–236.
- Fisher, P. (2000). *Fuzzy modelling* (459 pp). London: Taylor & Francis.
- Guillen, J., Holmes, S. J., Carvalho, N., Casey, J., Dörner, H., Gibin, M., Mannini, A., Vasilakopoulos, P., & Zanzi, A. (2018). A Review of the European Union Landing Obligation Focusing on Its Implications for Fisheries and the Environment. *Sustainability*, 10(4), 900.
- Halpern, B. S., Walbridge, S., Selkoe, K. A., Kappel, C. V., Micheli, F., D’Agrosa, C., Bruno, J. F., Casey, K. S., Ebert, C., Fox, H. E., Fujita, R., Heinemann, D., Lenihan, H. S., Madin, E. M. P., Perry, M. T., Selig, E. R., Spalding, M., Steneck, R., & Watson, R. (2008). A global map of human impact on marine ecosystems. *Science*, 319(5865), 948–952.
- Jahanshiri, E., Shariff, A.R.M., (2014). Developing web-based data analysis tools for precision farming using R and Shiny. *IOP Conference Series Earth and Environmental*, 20(1).
- Kavadas, S., Maina, I., Damalas, D., Dokos, I., Pantazi, M., & Vassilopoulou, V. (2015). Multi-criteria decision analysis as a tool to extract fishing footprints: Application to small scale fisheries and implications for management in the context of the maritime spatial planning directive. *Mediterranean Marine Science*, 16, 294–304.
- Maina, I., Kavadas, S., Katsanevakis, S., Somarakis, S., Tserpes, G., & Georgakarakos, S. (2016). A methodological approach to identify fishing grounds: A case study on Greek trawlers. *Fisheries Research*, 183, 326–339.
- Maina, I., Kavadas, S., Machias, A., Tsagarakis, K., & Giannoulaki, M. (2018). Modelling the spatiotemporal distribution of fisheries discards: a case study on eastern Ionian Sea trawl fishery. *Journal of Sea Research*, 139, 10–23.
- Malczewski, J. (1999). *GIS and multicriteria decision analysis* (393 pp). New York: Wiley & Sons.
- Nelson, K., & Burnside, N. G. (2019). Identification of marine management priority areas using a GIS-based multi-criteria approach. *Ocean and Coastal Management*, 172, 82–92.
- Niels, D., de Boois I., Emslie D., Fletcher, N., Heessen, H., Larsen, L.I., Lassen, H., Mahe, J.-C., Newton, A.W., Patberg, W., Peach, K.J., Gerjan, P., Sparholt, H., Star, B., Storbeck, F., (2001). Development of a central database for European trawl survey data. Final report. Project number QLRT-2001-00025.
- Pante, E., Simon-Bouhet, B., (2013). marmap: A package for importing, plotting and analyzing bathymetric and topographic data in R. *PLoS One*, 8(9).
- Paradinas, I., Mar, M., Pennino, M. G., Lopez-Quilez, A., Conesa, D., Barreda, D., Gonzalez, M., & Bellido, J. M. (2016). Identifying the best fishing-suitable areas under the new European discard ban. *ICES Journal of Marine Science*, 73(10), 2479–2487.
- Pennino, M. G., Vilela, R., Valeiras, J., & Bellido, J. M. (2017). Discard management: A spatial multi-criteria approach. *Marine Policy*, 77, 144–151.
- Pérez Roda, M.A., Gilman, E., Huntington, T., Kennelly, S.J., Suuronen, P., Chaloupka, M., Medley, P.A.H., 2019. A third assessment of global marine fisheries discards. *FAO - Technical Paper*, 633.
- Pointin, F., Cornou, A.-S., Prod’homme, R., Taupin, N., & Rochet, M. J. (2018). A method to address the non-random spatial distribution of on-board observer data to map landings and discards. *Fisheries Research*, 199, 242–251.
- Preciado, I., Arroyo, N.L., González-Irusta, J.M, López-López, L., Punzóna, A., Muñoz, I., Serrano, A., 2019. Small-scale



- spatial variations of trawling impact on food web structure. *Ecological Indicators*, 98, 442–452.
- Rees, T., 2003. "C-Squares," A new spatial indexing system and its applicability to the description of oceanographic datasets. *Oceanography*, 16(1), 11–19. "C-Squares," A New Spatial Indexing System and its Applicability to the Description of Oceanographic Datasets.
- Rochet, M. J., Catchpole, T., & Cadrin, S. (2014). Bycatch and discards: from improved knowledge to mitigation programmes. *ICES Journal of Marine Science*, 71(5), 1216–1218.
- Russo, T., D'Andrea, L., Parisi, A., & Cataudella, S. (2014). VMSbase: An R-Package for VMS and logbook data management and analysis in fisheries ecology. *PLoS One*, 9(6), e100195.
- Russo, T., D'Andrea, L., Parisi, A., Martinelli, M., Belardinelli, A., Boccoli, F., Cignini, I., Tordoni, M., & Cataudella, S. (2016). Assessing the fishing footprint using data integrated from different tracking devices: issues and opportunities. *Ecological Indicators*, 69, 818–827.
- Russo, T., Morello, E. B., Parisi, A., Scarcella, G., Angelini, S., Labanchi, L., Martinelli, M., D'Andrea, M., Santojanni, A., Ameri, E., & Cataudella, S. (2017). A model combining landings and VMS data to estimate landings by fishing ground and harbor. *Fisheries Research*, 199, 218–230.
- Scott, F., Prista, N., Reilly, T., (2017). fecR: Fishing Effort Calculator in R. Available at: <https://rdrr.io/cran/fecR/>
- Stelzenmüller, V., Lee, J., & Rogers, S. I. (2010). Quantifying cumulative impacts of human pressures on the marine environment: A geospatial modelling framework. *Marine Ecology Progress Series*, 398, 19–32.
- Sumaila, U. R., Cheung, W. W. L., Lam, V. W. Y., Pauly, D., & Herrick, S. (2011). Climate change impacts on the biophysics and economics of world fisheries. *Nature Climate Change*, 1(9), 449.
- Whateley, S., Walker, J. D., & Brown, C. (2015). A web-based screening model for climate risk to water supply systems in the northeastern United States. *Environmental Modelling and Software*, 73, 64–75.
- Zimmermann, H. J., & Zysno, P. (1980). *Fuzzy set theory and its application* (363 pp). Boston, Dordrecht, Lancaster: Kluwer-Nijhoff Publishing.

**Publisher's note** Springer Nature remains neutral with regard to jurisdictional claims in published maps and institutional affiliations.