

Massive left atrium thrombus

Paula Martínez Santos · Elena Batlle López · Elena España Barrio ·
Lorenzo Hernando Marrupe · Julia Jiménez Valtierra · Fátima Pérez González ·
Adriana de la Rosa Riestra · Raquel Campuzano Ruiz · Javier Botas Rodríguez

Received: 30 August 2013 / Accepted: 20 September 2013 / Published online: 10 October 2013
© Springer Science+Business Media Dordrecht 2013

Abstract The image shows a left atrium completely occupied by a giant non-homogeneous, irregularly-surfaced mass, obstructing the disc motion, mimicking severe mitral prosthetic stenosis.

Keywords Echocardiography · Thrombus · Left atrium

A 78-year-old man with a history of permanent atrial fibrillation and a mitral valve replacement (a 29 mm St Jude mechanical valve) for rheumatic disease 10 years before, was admitted by an acute cardioembolic coronary syndrome without ST elevation. Although he was treated with acenocoumarol his target index normalised ratio was not achieved. The transthoracic echocardiography showed that the mitral valve area measured by the pressure half time method was 0.9 cm^2 . The transvalvular gradient through the prosthesis was 10 mmHg. Because of the poor acoustic window, a transesophageal echocardiography was performed. The left atrium was completely occupied by a giant non-homogeneous, irregularly-surfaced mass (Fig. 1) which was obstructing the disc motion, mimicking severe mitral prosthetic stenosis (video 1). He was scheduled for

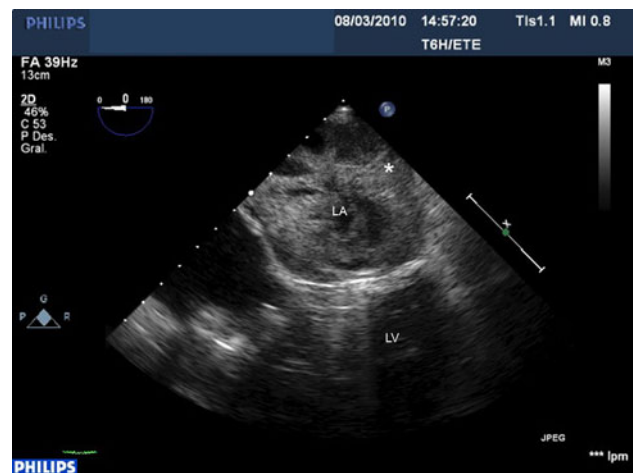


Fig. 1 Thrombus in left atrium. Transesophageal echocardiography showing a huge thrombus (asterisk) occupying almost the entire left atrium. LA Left atrium, LV left ventricle

cardiac surgery. A huge thrombus was removed but unfortunately he died during the surgery.

Conflict of interest None.

Electronic supplementary material The online version of this article (doi:10.1007/s10554-013-0299-2) contains supplementary material, which is available to authorized users.

P. M. Santos (✉) · E. B. López · E. E. Barrio ·
L. H. Marrupe · J. J. Valtierra · F. P. González ·
A. de la Rosa Riestra · R. C. Ruiz · J. B. Rodríguez
Department of Cardiology, Hospital Universitario Fundación
Alcorcón, Av Budapest, 1., 28922 Alcorcón, Madrid, Spain
e-mail: paulams1@hotmail.com