



## Correction to: Non-contrast MRI for breast screening: preliminary study on detectability of benign and malignant lesions in women with dense breasts

Yangyang Bu<sup>1,2</sup> · Jun Xia<sup>3</sup> · Bobby Joseph<sup>4</sup> · Xianjing Zhao<sup>1,2</sup> · Maosheng Xu<sup>1,2</sup> · Yingxing Yu<sup>1,2</sup> · Shouliang Qi<sup>5</sup> · Kamran A. Shah<sup>4</sup> · Shiwei Wang<sup>1,2</sup> · Jiani Hu<sup>4</sup>

Published online: 20 August 2019  
© Springer Science+Business Media, LLC, part of Springer Nature 2019

**Correction to: Breast Cancer Research and Treatment**  
<https://doi.org/10.1007/s10549-019-05342-5>

In the original version of the article, the image of Fig. 2 was erroneously duplicated as Fig. 4. The correct version of Fig. 4 is given below. The original article has been corrected.

---

The original article can be found online at <https://doi.org/10.1007/s10549-019-05342-5>.

---

✉ Shiwei Wang  
wsw1204@zcmu.edu.cn; 2474721554@qq.com

✉ Jiani Hu  
jhu@med.wayne.edu

Yangyang Bu  
56386012@qq.com

Jun Xia  
xiajun@email.szu.edu.cn

Bobby Joseph  
bjoseph2@dmc.org

Xianjing Zhao  
xianjingzhao@qq.com

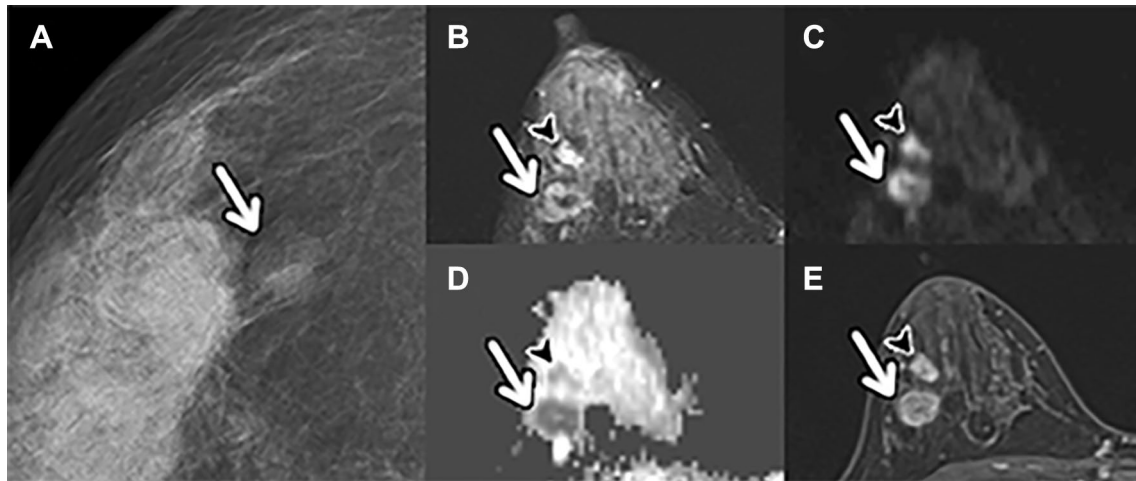
Maosheng Xu  
xums166@zcmu.edu.cn

Yingxing Yu  
yyx581117@163.com

Shouliang Qi  
qisl@bmie.neu.edu.cn

Kamran A. Shah  
kshah@wayne.edu

- <sup>1</sup> The First Clinical Medical College, Zhejiang Chinese Medical University, Hangzhou 310053, China
- <sup>2</sup> Department of Radiology, The First Affiliated Hospital of Zhejiang Chinese Medical University, 54 Youdian Road, Hangzhou 310006, China
- <sup>3</sup> Department of Radiology, The First Affiliated Hospital of Shenzhen University, Health Science Center, Shenzhen Second People's Hospital, Shenzhen 518037, China
- <sup>4</sup> Department of Radiology, Wayne State University, Detroit, MI 48201, USA
- <sup>5</sup> Sino-Dutch Biomedical and Information Engineering School of Northeastern University, Shenyang, China



**Fig. 4** A 38-year-old woman with dense breasts, with pathologically proven invasive carcinoma of no special type and mucinous carcinoma in the right breast. The lesion visibility scores of MG, DWI+TIRM, and clinical MRI of the lesion (arrow) were 4, 5, and 5, respectively. The breast cancer detection scores of MG, DWI+TIRM, and clinical MRI of the lesion (arrow) were 3, 4, and 5, respectively. The lesion visibility scores of MG, DWI+TIRM, and clinical MRI of the lesion (arrow head) were 2, 5, and 5, respectively. The breast cancer detection scores of MG, DWI+TIRM, and clinical MRI of the

lesion (arrow head) were 2, 4, and 5, respectively. **a** MG showed a high-density lesion with a circumscribed margin. **b** TIRM and **c** DWI ( $b=0.8 \times 10^{-3} \text{ s/mm}^2$ ) demonstrated a heterogeneous high-signal-intensity lesion (arrow) and a homogeneous high-signal-intensity lesion (arrow head) in the right breast. **d** ADC values of these two lesions were  $0.78 \times 10^{-3} \text{ mm}^2/\text{s}$  (arrow) and  $0.83 \times 10^{-3} \text{ mm}^2/\text{s}$  (arrow head). **e** Contrast-enhanced MRI showed both lesion heterogeneous enhancement

**Publisher's Note** Springer Nature remains neutral with regard to jurisdictional claims in published maps and institutional affiliations.