



## Correction to: Large-scale habitat model reveals a key role of large trees and protected areas in the metapopulation survival of the saproxylic specialist *Cucujus cinnaberinus*

Michał Belcik<sup>1</sup>  · Jakub Goczał<sup>2</sup> · Michał Ciach<sup>3</sup>

Published online: 4 November 2019  
© The Author(s) 2019

### Correction to: Biodiversity and Conservation

<https://doi.org/10.1007/s10531-019-01854-0>

We present here a revised version of Fig. 1 from our paper as it lacked some information used for the species distribution modeling as the original might be found misleading by some readers. This omission did not influence the results of our modeling process, for which the full set of observations was used. It does not therefore compromise our conclusions, or affect the other figures and tables we presented.

---

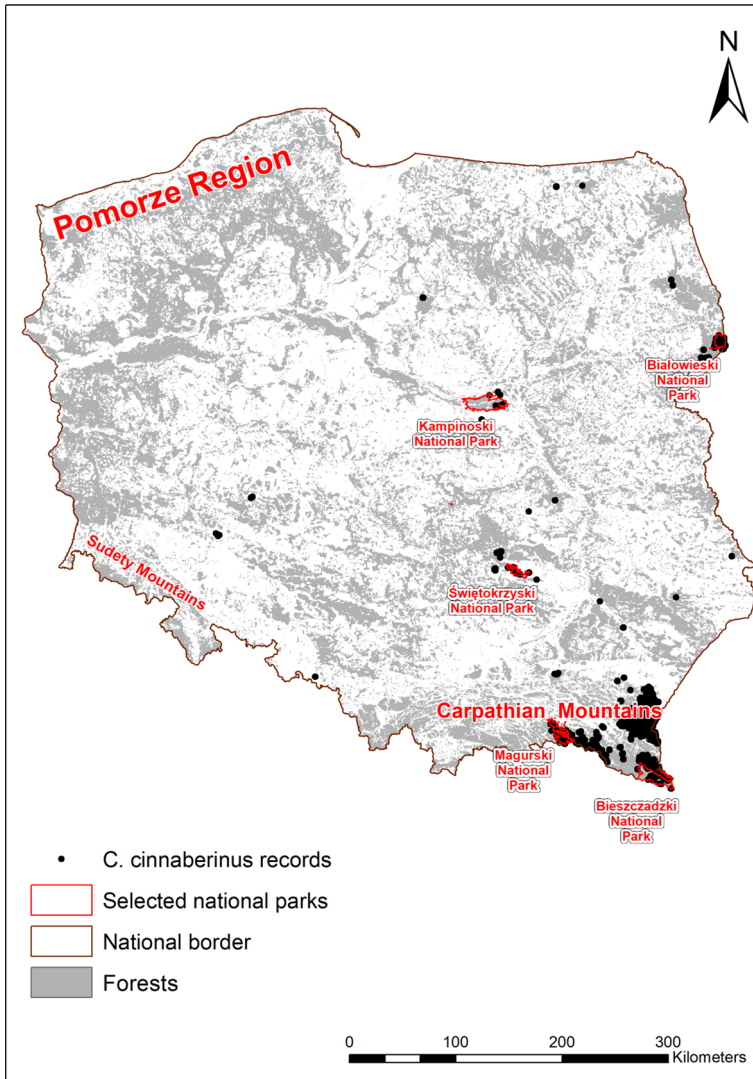
The original article can be found online at <https://doi.org/10.1007/s10531-019-01854-0>.

✉ Michał Belcik  
belcik@iop.krakow.pl

<sup>1</sup> Institute of Nature Conservation, Polish Academy of Sciences, Mickiewicza 33, 31-120 Kraków, Poland

<sup>2</sup> Institute of Forest Ecosystem Protection, Faculty of Forestry, University of Agriculture in Krakow, 29 Listopada 46, 31-425 Kraków, Poland

<sup>3</sup> Department of Forest Biodiversity, Faculty of Forestry, Institute of Forest Ecology and Silviculture, University of Agriculture in Krakow, 29 Listopada 46, 31-425 Kraków, Poland



**Fig. 1** Forests in Poland, *Cucujus cinnaberinus* presence records and the most important locations mentioned in the text

**Open Access** This article is distributed under the terms of the Creative Commons Attribution 4.0 International License (<http://creativecommons.org/licenses/by/4.0/>), which permits unrestricted use, distribution, and reproduction in any medium, provided you give appropriate credit to the original author(s) and the source, provide a link to the Creative Commons license, and indicate if changes were made.

**Publisher's Note** Springer Nature remains neutral with regard to jurisdictional claims in published maps and institutional affiliations.