

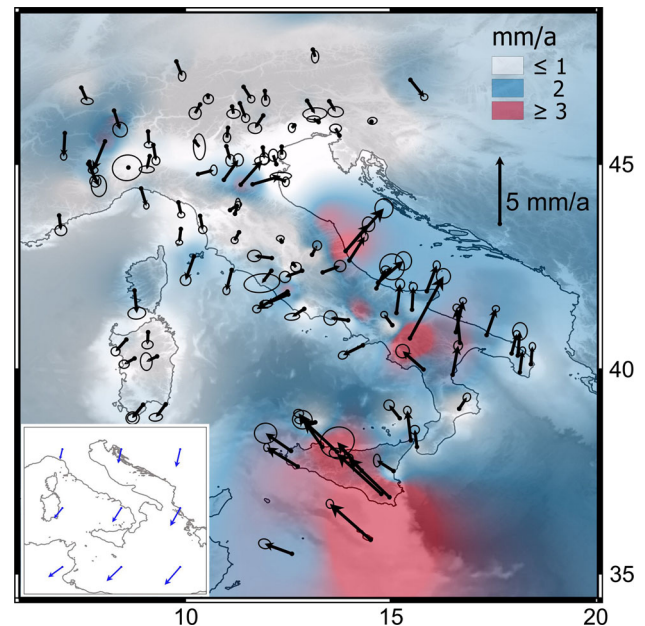
## Erratum to: Contemporary crustal velocity field in Alpine Mediterranean area of Italy from new geodetic data

Gregorio Farolfi<sup>1,2</sup> · Chiara Del Ventisette<sup>1</sup>

Published online: 22 February 2016  
© Springer-Verlag Berlin Heidelberg 2016

### Erratum to: GPS Solut DOI 10.1007/s10291-015-0481-1

In the original publication, Fig. 6 was incorrect. The North and East components of velocity vectors were inverted. The correct version of the Fig. 6 is shown here.



**Fig. 6** Horizontal velocities and error ellipses (95 % of confidence level) in the local reference frame defined for the Alpine Mediterranean area. The interpolated horizontal velocity field is displayed by a graduated color scale. *White* represents stable part, *blue* 2 mm/a and *red* up to 4 mm/a. Velocity field vectors of the Alpine Mediterranean Euler Pole with respect to the Eurasia are shown in the *inset*

The online version of the original article can be found under doi:[10.1007/s10291-015-0481-1](https://doi.org/10.1007/s10291-015-0481-1).

✉ Gregorio Farolfi  
gregorio.farolfi@gmail.com  
Chiara Del Ventisette  
chiara.delventisette@unifi.it

<sup>1</sup> Department of Earth Sciences, University of Firenze, Via La Pira 4, 50121 Florence, Italy

<sup>2</sup> Istituto Geografico Militare, Via Battisti, 10/12, 50121 Florence, Italy