



# Correction to: Temporal change in life and renal prognosis of rapidly progressive glomerulonephritis in Japan via nationwide questionnaire survey

Kunihiro Yamagata<sup>1</sup> · Joichi Usui<sup>1</sup>  · Hitoshi Sugiyama<sup>2</sup> · Shoichi Maruyama<sup>3</sup> · Ichiei Narita<sup>4</sup>

Published online: 27 July 2020  
© Japanese Society of Nephrology 2020

## Correction to:

**Clinical and Experimental Nephrology**  
(2019) 23:573–575

<https://doi.org/10.1007/s10157-018-1663-2>

In the Original publication of the article, the text in the horizontal axis in Fig. 1a and b appears incorrectly as “Time from treatment start (Months)”. The corrected Fig. 1 is given below

---

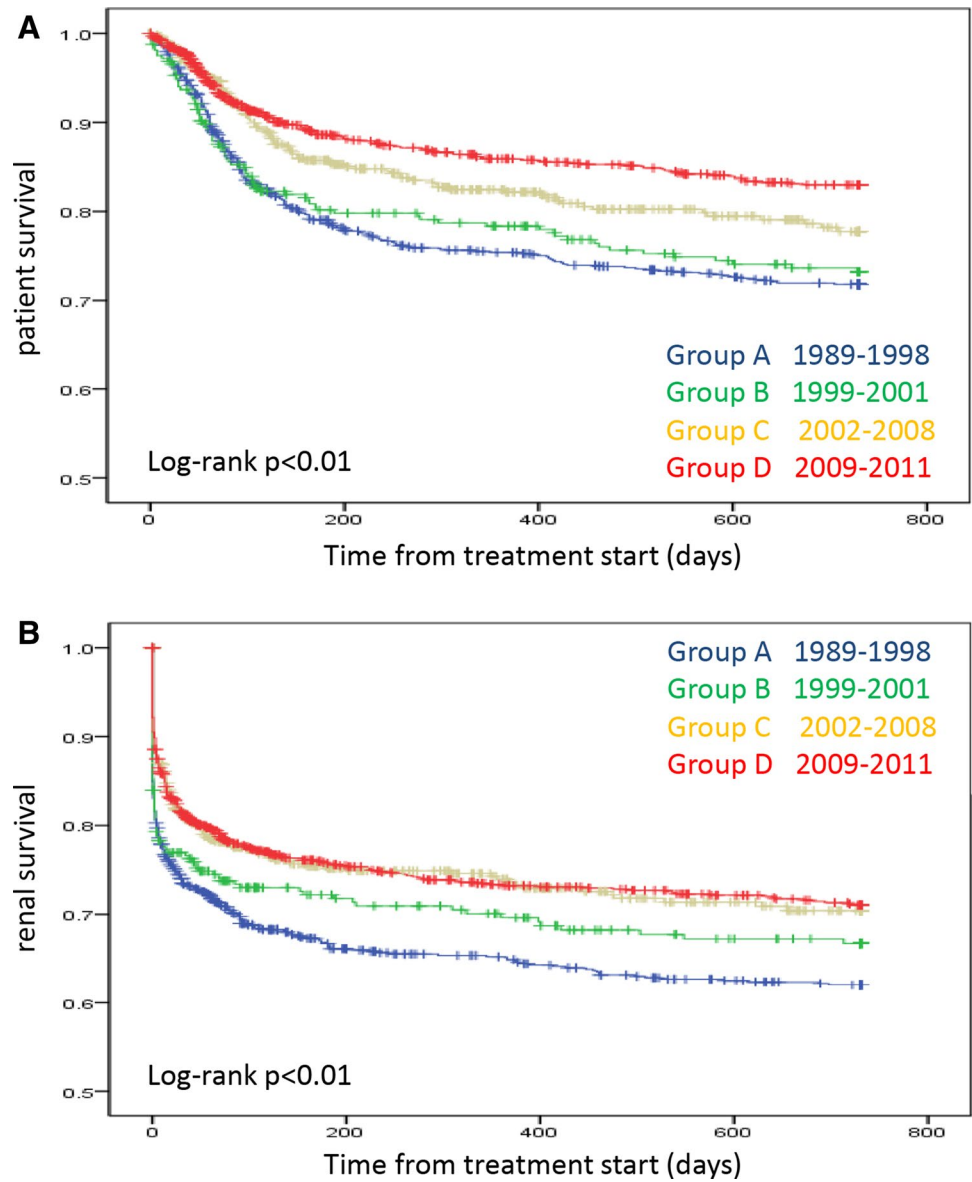
The original article can be found online at <https://doi.org/10.1007/s10157-018-1663-2>.

---

✉ Kunihiro Yamagata  
k-yamaga@md.tsukuba.ac.jp

- <sup>1</sup> Department of Nephrology, Faculty of Medicine, University of Tsukuba, 1-1-1 Tennodai, Tsukuba, Ibaraki 305-8575, Japan
- <sup>2</sup> Department of Human Resource Development of Dialysis Therapy for Kidney Disease, Okayama University Graduate School of Medicine, Dentistry and Pharmaceutical Sciences, Okayama, Japan
- <sup>3</sup> Department of Nephrology, Internal Medicine, Nagoya University Graduate School of Medicine, Nagoya, Japan
- <sup>4</sup> Division of Clinical Nephrology and Rheumatology, Niigata University Graduate School of Medical and Dental Sciences, Niigata, Japan

**Fig. 1** Temporal change of survival(a) and renal survival (b)of rapidly progressive glomerulonephritis



**Publisher’s Note** Springer Nature remains neutral with regard to jurisdictional claims in published maps and institutional affiliations.