

Erratum to: Surgical therapy of neuroendocrine neoplasm with hepatic metastasis: patient selection and prognosis

F. M. Watzka · C. Fottner · M. Miederer · A. Schad ·
M. M. Weber · G. Otto · H. Lang · T. J. Musholt

Published online: 7 April 2015
© Springer-Verlag Berlin Heidelberg 2015

Erratum to: Langenbecks Arch Surg
DOI 10.1007/s00423-015-1277-z

Figure 5 is not visible in the published online version. The correct figure and caption is shown below.

The online version of the original article can be found at <http://dx.doi.org/10.1007/s00423-015-1277-z>.

F. M. Watzka · H. Lang · T. J. Musholt (✉)
Clinic of General, Visceral and Transplantation Surgery, University Medical Center University Mainz, Langenbeckstr. 1, 55131 Mainz, Germany
e-mail: musholt@uni-mainz.de

C. Fottner · M. M. Weber
Clinic of Endocrinology and Metabolic Diseases, University Medical Center University Mainz, Langenbeckstr. 1, 55131 Mainz, Germany

M. Miederer
Clinic of Nuclear Medicine, University Medical Center University Mainz, Langenbeckstr. 1, 55131 Mainz, Germany

A. Schad
Institute of Pathology, University Medical Center University Mainz, Langenbeckstr. 1, 55131 Mainz, Germany

G. Otto
Clinic of Transplantation Surgery, University Medical Center University Mainz, Langenbeckstr. 1, 55131 Mainz, Germany

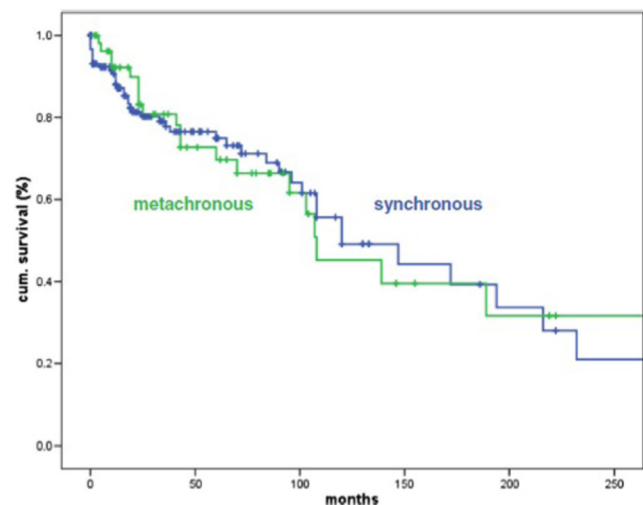


Fig. 5 Kaplan–Meyer curve according to synchronous ($n=150$) or metachronous ($n=54$) occurrence of the hepatic metastases. There is no significant difference between the curves (log rank test $p=0.834$). The 10-year survival rates were 55.7 % for synchronous and 45.2 % for metachronous hepatic metastases