



Higher midlife CAIDE score is associated with increased brain atrophy in a cohort of cognitively healthy middle-aged individuals

Xulin Liu¹ · Maria-Eleni Dounavi¹ · Karen Ritchie^{2,3} · Katie Wells⁴ · Craig W. Ritchie² · Li Su¹ · Graciela Muniz-Terrera² · John T. O'Brien¹

Received: 5 October 2020 / Revised: 18 December 2020 / Accepted: 19 December 2020 / Published online: 9 January 2021
© The Author(s) 2021

Abstract

Background Structural brain changes associated with Alzheimer's disease (AD) can occur decades before the onset of symptoms. The Cardiovascular Risk Factors, Aging, and Dementia (CAIDE) score has been suggested to be associated with accelerated brain atrophy in middle-aged subjects but the regional specificity of atrophic areas remains to be elucidated.

Methods 3T T1-weighted magnetic resonance imaging scans of 160 cognitively healthy middle-aged participants (mean age = 52) in the PREVENT-Dementia cohort, from baseline and from follow-up after 2 years, were examined. Images were preprocessed using Computational Anatomy Toolbox 12. Voxel-based morphometry was performed in FSL 6.0.1 to identify areas of grey matter (GM) volume differences both cross-sectionally and longitudinally between subjects with high and low baseline CAIDE score (CAIDE score was dichotomized at cohort-median). A GM percentage of change map was created for each subject for evaluation of atrophy over 2 years. Analyses were adjusted for age, gender, education and total intracranial volume.

Results Compared to subjects with CAIDE score ≤ 6 (low risk), subjects with CAIDE score > 6 (high risk) showed lower GM volume in the temporal, occipital, and fusiform cortex and lingual gyrus at baseline, and greater percentage of GM loss over 2 years in the supramarginal gyrus, angular gyrus, precuneus, lateral occipital cortex, superior parietal lobule and cingulate gyrus (corrected $P < 0.05$).

Conclusion This study demonstrated accelerated GM atrophy concentrated in several AD signature cortical regions in healthy middle-aged subjects with high CAIDE scores.

Keywords Dementia · Alzheimer's disease · Grey matter · Atrophy · Middle aged

✉ Maria-Eleni Dounavi
med57@medschl.cam.ac.uk

Xulin Liu
xl454@cam.ac.uk

Karen Ritchie
karen.ritchie@inserm.fr

Katie Wells
katie.wells@imperial.ac.uk

Craig W. Ritchie
craig.ritchie@ed.ac.uk

Li Su
ls514@medschl.cam.ac.uk

Graciela Muniz-Terrera
G.Muniz@ed.ac.uk

John T. O'Brien
john.obrien@medschl.cam.ac.uk

¹ Department of Psychiatry, School of Clinical Medicine, University of Cambridge, Level E4 Cambridge Biomedical Campus, Cambridge CB2 0SP, UK

² Centre for Dementia Prevention, University of Edinburgh Centre for Clinical Brain Sciences, Edinburgh, UK

³ INSERM, University of Montpellier, Montpellier, France

⁴ The Centre for Psychiatry, Imperial College London, London, UK

Introduction

Dementia is characterized by cognitive decline, loss of memory and behavioral changes, leading to reduced ability to perform daily life activities [1]. By 2040, it is expected that the number of people with dementia will increase by 100% in developed countries and by approximately 300% in developing countries and heavily populated regions [2]. The most common cause of dementia is Alzheimer's disease (AD) [3, 4]. Although AD symptoms usually appear after the age of 65, the potential neuropathology and brain structural alternations underlying AD might occur decades before the onset of symptoms [5–8]. Furthermore, exposure to many risk factors at middle age is associated with an increased risk of developing AD later in life [9]. Identification of AD structural biomarkers in middle-aged subjects at risk of future AD could, therefore, be an important step towards early diagnosis and interventions.

Cardiovascular risk factors are well-known risk factors for AD and are associated with brain volume changes commonly connected with AD [10–13]. Cross-sectional studies have found associations between cardiovascular risk factors (e.g., hypertension, obesity, high cholesterol) and decreases in total grey matter (GM) volume, hippocampal volume and cortical thickness [11–13]. The Cardiovascular Risk Factors, Aging and Dementia (CAIDE) score is a midlife dementia risk score calculated based on the population-based CAIDE study [14]. Some previous studies have demonstrated the association of CAIDE score with global brain volume and cognition. For example, a longitudinal study in cognitively healthy older people with a mean age of 70 years has shown that higher CAIDE scores were associated with lower total GM volume, lower cortical thickness, and worse cognition [11]. A cross-sectional study in healthy middle-aged subjects has demonstrated that higher CAIDE score was associated with poorer visual association learning and lower brain volume [15]. There has, however, been limited longitudinal research in cognitively healthy middle-aged people linking CAIDE score to longitudinal brain volume changes. A recently published longitudinal study in middle-aged subjects (aged 40–59) of the PREVENT-Dementia cohort has shown that having a midlife CAIDE score > 6 was associated with greater whole brain atrophy rate over 2 years [16]. However, the specific brain structures responsible for the increased brain atrophy with increased midlife CAIDE score are yet to be explored. This is important to determine as it might contribute to a better understanding of early brain structural atrophy underlying AD and provide specific targets for potential early interventions.

Hence, to address the current literature gap in the regional specificity of atrophic areas associated with

dementia risk score in middle-aged people, the primary aims of this present study are to use voxel-based morphometry (VBM) to examine the specific brain regions with increased atrophy associated with higher CAIDE score and to examine the association of CAIDE score with cortical thickness.

Materials and methods

Study participants

This study examined participants of the PREVENT-Dementia cohort study (West London site), an ongoing multi-site longitudinal study in the UK and Ireland recruiting cognitively healthy volunteers in the age range of 40–59 [17]. Participants were recruited based on dementia family history, and their apolipoprotein E (APOE) genotype was recorded [17]. All subjects recruited in this cohort were cognitively unimpaired and details of baseline cognitive measures have been described elsewhere [15]. Magnetic resonance imaging (MRI) scans at baseline and at follow-up after 2 years were acquired. Participants who had completed both baseline and 2-year follow-up MRI scans by the time of this study were included ($n = 168$). One subject had missing essential information and, therefore, was excluded from image preprocessing. Hence, MRI scans of 167 subjects were included in image preprocessing.

Dementia risk score

A CAIDE score was calculated for each participant in the PREVENT-Dementia cohort. The CAIDE score ranges from 0 to 18, calculated by taking into account age, gender, education years, systolic blood pressure, body mass index, total cholesterol, physical activity, and APOE $\epsilon 4$ carriership which is by far a major genetic risk factor for the development of sporadic AD [14, 18]. Midlife CAIDE score is highly predictive of dementia risk over 20 years and has been validated in a large (> 9000 participants) population from the US (age range, 40–55 years) [19]. In the present study, CAIDE score was treated as a binary variable dichotomized according to the group median (CAIDE score = 6) in accordance with the previous methodological approach in the research on the same cohort [16]. Baseline CAIDE score > 6 will be referred to as CAIDE-high and baseline CAIDE score ≤ 6 will be referred to as CAIDE-low in this study.

MRI data acquisition and preprocessing

MRI scanning was carried out at the West London Cognitive Disorders Treatment and Research Unit in West London

Mental Health Trust, West London, UK using a 3 T SIE-MENS Magnetom Verio Syngo scanner. A three-dimensional T1-weighted magnetization prepared rapid gradient echo (MPRAGE) sequence image was acquired with repetition time = 2300 ms, echo time = 2.98 ms, FOV = 240 × 256 mm², voxel size = 1.0 × 1.0 × 1.0 mm³, 160 slices with 1 mm slice thickness and flip angle = 9°.

The acquired T1-weighted MPRAGE images were pre-processed using the longitudinal processing stream of the Computational Anatomy Toolbox 12 (CAT12) (<http://www.neuro.uni-jena.de/cat/>) in Statistical Parametric Mapping 12 (<https://www.fil.ion.ucl.ac.uk/spm/software/spm12/>) based on MATLAB version 2019a (R2019a, MathWorks, Natick, MA, USA). As part of the longitudinal preprocessing, an initial intra-subject rigid registration was applied to realign images of all time points and an intra-subject bias correction was applied. Images were denoised and corrected for intensity non-uniformities and segmented into different tissue classes. Images were then spatially normalized using Diffeomorphic Anatomical Registration Through Exponentiated Lie Algebra (DARTEL) algorithm and registered to the Montreal Neurological Institute (MNI) 152 template. The resultant image in MNI space was modulated using the Jacobian determinants [20]. Finally, images were spatially smoothed with a 8 mm full-width at half maximum (FWHM) Gaussian kernel. The absolute and relative volumes of GM, white matter (WM), and cerebrospinal fluid (CSF) of the whole brain and the total intracranial volume (TIV) were calculated based on the segmented maps, as part of the CAT 12 preprocessing. Relative volume was calculated by dividing absolute volume by TIV, which would control for the individual differences in brain sizes. Cortical thickness was estimated as part of the preprocessing pipeline in CAT12 using the projection-based thickness approach [21].

All preprocessed GM images were inspected one-by-one visually for image quality assurance before further analysis. Images with poor quality or issues resulting from preprocessing that could not be addressed were excluded. Subjects with incidental findings such as meningiomas were excluded.

Voxel-based morphometry

The smoothed, modulated, warped and segmented GM images generated from CAT12 preprocessing were used for voxel-wise [22] statistical analyses performed in FSL 6.0.1 (<https://fsl.fmrib.ox.ac.uk/fsl/fslwiki/FSL>). The GM images were investigated using voxel-wise general linear model (GLM) (<https://fsl.fmrib.ox.ac.uk/fsl/fslwiki/GLM>) with permutation nonparametric testing [23] (5000 permutations). Results were corrected for multiple comparisons in FSL by family-wise error (FWE) correction [24]. A FWE-corrected *P* value < 0.05 was considered to be statistically

significant. Brain structures with significant difference between the considered groups were identified using the Harvard–Oxford Cortical and Subcortical Structural Atlases with an overlay of 20% or above of significant clusters with a particular structure. Baseline age, gender, education years and TIV were included as covariates in GLMs.

To limit the analysis to areas of GM, a GM mask was created by binarizing the individual GM images at a threshold of 0.1 (i.e., GM areas with GM > 10% were included) using MATLAB version 2019a (R2019a, MathWorks, Natick, MA, USA). For cross-sectional analyses to investigate any baseline difference, voxel-wise two-sample unpaired t-test was performed in FSL with a mask including all binarized individual baseline GM images to compare the GM volume between CAIDE-high and CAIDE-low subjects.

For longitudinal analyses, a percentage of change map was created for each subject as in the equation below:

$$100 * \frac{\text{GM at followup} - \text{GM at baseline}}{\text{GM at baseline}}$$

where GM represents the 10% threshold-applied GM image (i.e., GM areas with GM > 10% were included). Non-numerical and infinite values were set to 0 in the change map. A mask for voxel-wise analysis was created by including all areas in the change maps with an absolute threshold of 0.01 (i.e., areas with absolute values > 0.01 were included) to exclude non-numerical and infinite values. Voxel-wise two-sample t-test was performed in FSL to compare the GM change maps between CAIDE-high and CAIDE-low subjects.

To further investigate the regions that showed significant differences in longitudinal GM volume change between the groups, an “AD signature cortical regions” mask was created by including the main cortical regions defined as “AD signature” in previous literature (inferior temporal gyrus, temporal pole, angular gyrus, superior frontal gyrus, superior parietal lobule, supramarginal gyrus, precuneus, inferior frontal sulcus) [25] using the Harvard–Oxford Cortical Structural Atlases in FSL. The voxels from regions showing significant differences in GM volume change between the groups that overlap with the AD signature cortical regions mask were quantified in FSL.

Statistical analyses

Non-voxel-wise statistical analyses were performed in GraphPad Prism 8 (Version 8.3.1 (332)). Comparisons of demographic characteristics were performed using chi-squared tests for categorical variables and Mann–Whitney tests for continuous variables. The MRI measurements (i.e., relative volumes of GM, WM, and CSF; TIV; and cortical thickness) were compared cross-sectionally (i.e., at baseline)

and longitudinally. The 2-year percentage of change of each measurement was calculated using the equation below:

$$100 * \frac{\text{measurement at followup} - \text{measurement at baseline}}{\text{measurement at baseline}}$$

Linear regressions were used with MRI measurements as dependent variables in cross-sectional analyses and with the 2-year percentage of change of MRI measurements as dependent variables in longitudinal analyses. CAIDE score as a binary variable was used as an independent variable. As APOE $\epsilon 4$ carriership is included in the calculation of CAIDE score, post hoc analysis of APOE $\epsilon 4$ carriership was performed using it as an independent variable in linear regression to investigate whether the effect of CAIDE score was driven by APOE $\epsilon 4$ carriership. Age, gender and education years were included as covariates in regression analyses.

For all statistical analyses, demographic values and CAIDE score at baseline were used. *P* values < 0.05 were considered to be statistically significant.

Results

Characteristics of participants

Out of the 167 subjects with MRI scans preprocessed, 5 subjects were excluded due to incidental findings: 4 had meningioma and 1 had damage due to a brain surgery. Two subjects were excluded due to image quality issues in pre-processing. Hence, 160 was the final analytic sample. Baseline characteristics of participants are reported in Table 1. For those subjects with a family history of dementia, the mean age at which the first parent was diagnosed with

dementia was 77 years, and therefore, these subjects were estimated at baseline to be approximately 24 years away from possible dementia onset based on their parental age at diagnosis.

Analyses of whole brain tissues

For the whole sample on average, from baseline to follow-up, GM volume decreased by $0.96\% \pm 1.9\%$, cortical thickness decreased by $0.5\% \pm 1.0\%$, WM decreased by $0.12\% \pm 1.7\%$, and CSF increased by $2.2\% \pm 5.3\%$.

Cross-sectionally, CAIDE score was negatively associated with GM volume and positively associated with CSF volume (Table 2). Longitudinally, CAIDE score was associated with decreases in GM volume and cortical thickness and with an increase in CSF volume (Table 2), as expected from previously published analyses of this cohort [16]. After adjusting for age, gender and education years, higher CAIDE score remained associated with a decrease in GM volume (Table 2). APOE $\epsilon 4$ allele carriership was not a significant predictive variable of any tissue volume or cortical thickness cross-sectionally or longitudinally.

Voxel-based morphometry

Cross-sectionally, CAIDE-high subjects showed smaller GM volume in the temporal, occipital, and fusiform cortex and lingual gyrus in comparison with CAIDE-low subjects at baseline (Fig. 1). Longitudinally, CAIDE-high subjects showed greater percentage of GM volume loss compared to CAIDE-low subjects in the supramarginal gyrus, angular gyrus, precuneus, lateral occipital cortex, superior parietal lobule and cingulate gyrus (Fig. 2). VBM results with cluster details are shown in Table 3. 76.6%

Table 1 Baseline characteristics of study participants

	All subjects	CAIDE score > 6	CAIDE score \leq 6	<i>P</i> value
<i>n</i>	160	68	92	
CAIDE score	5.9 ± 2.9	8.5 ± 1.6	4.0 ± 2.0	
Age	52.0 ± 5.3	55.0 ± 3.7	49.8 ± 5.3	< 0.001
Female <i>n</i> (%)	114 (71.2)	42 (61.8)	72 (78.3)	0.023
Education years	16.1 ± 3.4	15.3 ± 3.4	16.6 ± 3.3	0.028
APOE $\epsilon 4$ carriers <i>n</i> (%)	61 (38.1)	39 (57.4)	22 (23.9)	< 0.001
SBP (mmHg)	121.6 ± 14.7	127.1 ± 15.3	117.5 ± 12.8	< 0.001
BMI (kg/m ²)	27.1 ± 4.7	29.2 ± 5.3	25.6 ± 3.4	< 0.001
Total cholesterol (mmol/L)	5.6 ± 1.0	5.7 ± 1.2	5.5 ± 0.9	0.25
Physical activity (<i>n</i> and % of subjects defined as active)	33 (20.6)	11 (16.2)	22 (23.9)	0.23
FHD + <i>n</i> (%)	86 (53.8)	43 (63.2)	43 (46.7)	0.039

Plus-minus values are means \pm standard deviation. *P* value represents the *P* value of statistical difference between subjects with CAIDE score > 6 and CAIDE score \leq 6

APOE apolipoprotein E, BMI body mass index, CAIDE Cardiovascular Risk Factors, Aging, and Dementia risk, FHD + with family history of dementia, SBP systolic blood pressure

Table 2 Results of the linear regressions with brain volumes and cortical thickness at baseline and the percentage of change^a over 2 years as dependent variables and with binary CAIDE score as an independent variable

	CAIDE score univariate	CAIDE score covariate ^b
GM^c (%)		
Baseline	$\beta = -0.098, SE = 0.030, P = 0.0016^*$	$\beta = -0.54, SE = 0.36, P = 0.14$
Percentage of change	$\beta = -0.065, SE = 0.021, P = 0.0020^*$	$\beta = -0.0077, SE = 0.0034, P = 0.026^*$
Cortical thickness (mm)		
Baseline	$\beta = -0.045, SE = 0.029, P = 0.13$	$\beta = -0.0053, SE = 0.034, P = 0.87$
Percentage of change	$\beta = -0.061, SE = 0.024, P = 0.014^*$	$\beta = -0.053, SE = 0.029, P = 0.064$
CSF^c (%)		
Baseline	$\beta = 0.064, SE = 0.031, P = 0.042^*$	$\beta = 0.020, SE = 0.036, P = 0.57$
Percentage of change	$\beta = 0.071, SE = 0.026, P = 0.0065^*$	$\beta = 0.055, SE = 0.030, P = 0.067$
WM^c (%)		
Baseline	$\beta = -0.0025, SE = 0.028, P = 0.93$	$\beta = 0.016, SE = 0.032, P = 0.62$
Percentage of change	$\beta = -0.033, SE = 0.021, P = 0.13$	$\beta = -0.019, SE = 0.025, P = 0.45$
TIV (cm³)		
Baseline	$\beta = 0.055, SE = 0.029, P = 0.059$	$\beta = 0.022, SE = 0.027, P = 0.42$
Percentage of change	$\beta = 0.012, SE = 0.017, P = 0.48$	$\beta = 0.012, SE = 0.020, P = 0.53$

CAIDE Cardiovascular Risk Factors, Aging, and Dementia risk, CSF cerebrospinal fluid, GM grey matter, SE standard error, TIV total intracranial volume, WM white matter

^aPercentage of change over 2 years was calculated by (measurement at follow-up – measurement at baseline)/measurement at baseline

^bCAIDE score was used as an independent variable with age, gender, and education years added as covariates in linear regressions

^cRelative volume was used in analyses, calculated by absolute volume/TIV and represented as a percentage

*Statistically significance defined as $P < 0.05$

of the regions showing greater percentage of GM volume loss in CAIDE-high subjects were located within the AD signature cortical regions [25] (Table 4).

Discussion

Following a recent study reporting the association of CAIDE score with global GM atrophy and ventricular enlargement in the PREVENT-Dementia cohort [16], the present study has investigated GM associations with

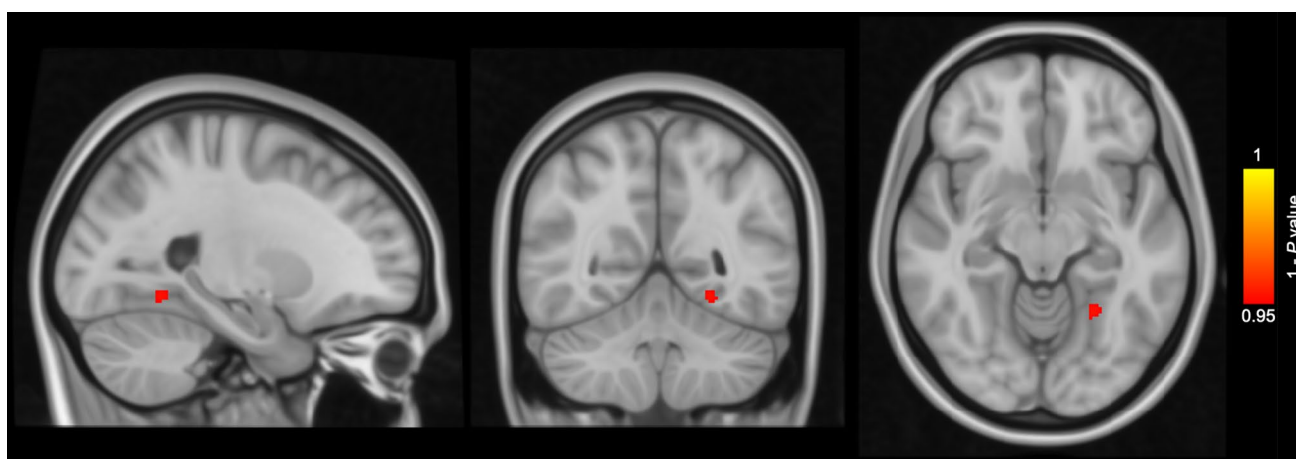


Fig. 1 Voxel-based morphometry results of cross-sectional grey matter (GM) comparison between subjects with Cardiovascular Risk Factors, Aging, and Dementia risk (CAIDE) score > 6 ($n = 68$) and subjects with CAIDE score ≤ 6 ($n = 92$) at baseline. Areas in red-yellow

represent areas, where the GM volume was lower in subjects with CAIDE score > 6 than subjects with CAIDE score ≤ 6 (family-wise error corrected $P < 0.05$), adjusting for age, gender, education years and total intracranial volume

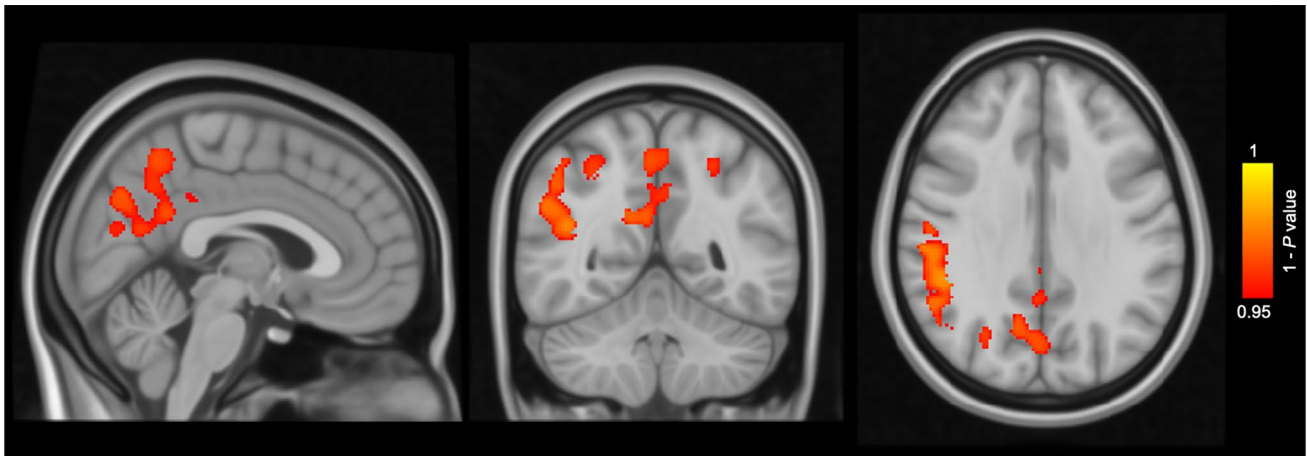


Fig. 2 Voxel-based morphometry results of comparison of the grey matter (GM) percentage of change over 2 years between subjects with Cardiovascular Risk Factors, Aging, and Dementia risk (CAIDE) score > 6 ($n=68$) and subjects with CAIDE score ≤ 6 ($n=92$). Areas

in red-yellow represent areas, where the percentage of GM loss was greater in subjects with CAIDE score > 6 than subjects with CAIDE score ≤ 6 (family-wise error corrected $P < 0.05$), adjusting for age, gender, education years and total intracranial volume

Table 3 VBM results of GM volume comparison between subjects with CAIDE score > 6 and subjects with CAIDE score ≤ 6

Anatomical region	Cluster size (voxels)	Coordinates (MNI)			FWE-corrected P value
		x	y	z	
<i>Cross-sectional</i>					
Temporal, occipital and fusiform cortex; Lingual gyrus	39	-24	-54	-10.5	0.047
<i>Longitudinal</i>					
Supramarginal gyrus; Angular gyrus	4109	51	-42	34.5	0.020
Precuneus	2270	15	-57	25.5	0.031
Lateral occipital cortex	342	43.5	-79.5	-1.5	0.038
Superior parietal lobule	92	-25.5	-54	49.5	0.039
Cingulate gyrus	46	3	-37.5	33	0.049

CAIDE Cardiovascular Risk Factors, Aging, and Dementia risk, FWE family-wise error, GM grey matter, MNI Montreal Neurological Institute, VBM voxel-based morphometry

Table 4 Cluster sizes of AD signature cortical regions^a, regions showing increased GM atrophy in subjects with CAIDE score > 6, and their overlapped regions

Anatomical region	Cluster size (voxels)
AD signature cortical regions	101,020
Regions with increased GM atrophy in subjects with CAIDE score > 6	6859
AD signature cortical regions with increased GM atrophy in subjects with CAIDE score > 6	5255

AD Alzheimer’s disease, CAIDE Cardiovascular Risk Factors, Aging, and Dementia risk, GM grey matter
^aAD signature cortical regions include eight main regions (inferior temporal gyrus, temporal pole, angular gyrus, superior frontal gyrus, superior parietal lobule, supramarginal gyrus, precuneus, inferior frontal sulcus)[25]

CAIDE score at a voxel-wise level to identify specific structures with accelerated GM atrophy. The present study has also investigated the association of CAIDE score with cortical thickness. Our results for the global tissue volumes are in line with the previous study [16], using in the present study a different image processing software tool.

Using VBM the current study has investigated the voxel-wise associations between GM volume and CAIDE score and has localized specific regions with increased GM loss predicted by a baseline CAIDE score greater than 6. We have shown that in cognitively healthy middle-aged subjects a CAIDE score greater than 6 was associated with

lower GM volume in the temporal, occipital, and fusiform cortex and lingual gyrus cross-sectionally and with accelerated GM atrophy longitudinally in the supramarginal gyrus, angular gyrus, precuneus, lateral occipital cortex, superior parietal lobule and cingulate gyrus. These results were adjusted for the effects of age, gender, education and TIV.

The structures demonstrating accelerated atrophy with a high CAIDE score are involved in the process of consciousness, integration of elements, visual-spatial memory, and episodic memory according to the literature [26–29]. The majority of these regions could be classified as “AD signature cortical regions”, where AD-related cortical thinning often occurs [25] and such thinning has been suggested to be related to greater likelihood of progression from mild cognitive impairment to mild AD [30] and related to symptom severity in mild AD [25]. Based on findings from the present study, some of these AD signature cortical regions are vulnerable to accelerated GM atrophy associated with a high CAIDE score in midlife. In previous studies, CAIDE score has been more commonly examined as a continuous variable [11, 15, 31, 32]. A longitudinal study on a Finnish population has shown that increased midlife CAIDE score was associated with lower total GM volume and lower AD signature cortical thickness [11]. We have also examined the association between CAIDE score and cortical thickness in this present study and found that a CAIDE score > 6 was associated with increased cortical thinning although the association did not survive after adding age, gender and education years as covariates. The Finnish study has also found that higher midlife CAIDE score was associated with lower hippocampal volume, more pronounced deep WM lesions, more pronounced visually rated medial temporal atrophy (MTA) and poorer cognition later in life [11]. Higher midlife CAIDE score has been found to be associated with more severe MTA up to 30 years later also in another Finnish study [31] and in a cross-sectional study of non-demented subjects in Sweden [32]. We have found in this present study that higher CAIDE score was associated with accelerated GM atrophy in approximately 5% of the AD signature cortical regions [25] but not the medial temporal lobe. The possible reason for the discrepancy might be that the previous longitudinal studies mentioned above followed subjects for an average of more than 15 years, while this present study was based on longitudinal analyses over only 2 years. In the long run MTA might be associated with high midlife CAIDE score but short-term changes associated with high CAIDE score in midlife might be mostly concentrated in regions shown in this present study. Increased atrophy in these regions might, therefore, suggest an increased vulnerability to AD indicated by higher CAIDE score during midlife. The present results also suggest that CAIDE score might be a sensitive score to assist in detecting potentially AD-related

brain structural alternations in cognitively healthy middle-aged subjects.

CAIDE score was calculated based on age, gender and education in addition to vascular risk factors and APOE genotype. Since age has been suggested to be the largest contributor to the dementia risk predictive effect of CAIDE score [33], this present study, in addition to analyzing CAIDE score as a single independent variable, also analyzed CAIDE score with age, gender and education years as covariates to control for any linear effects of these factors. The voxel-wise association between CAIDE score and GM atrophy remained significant after controlling for the effects of age, gender, and education years. In addition, APOE genotype in this cohort was not associated with GM volume loss over time. Hence, the association between CAIDE score and GM atrophy observed in VBM analyses might be mostly driven by vascular factors within the CAIDE score. This is of particular importance considering that around a third of AD cases worldwide might be attributable to potentially modifiable risk factors, including some risk factors that are taken into account when calculating the CAIDE score, such as midlife hypertension, midlife obesity, physical inactivity, and low education [10]. The increased GM loss in middle-aged subjects with a higher dementia risk score suggests that the observed accelerated GM atrophy in several AD-signature regions might potentially be delayed by improving modifiable vascular risk factors.

Although baseline volume differences were found between CAIDE-high and CAIDE-low subjects in a very small number of areas, these areas did not show differential degree of atrophy over time between the groups. This possibly suggests that the baseline differences found in this study had been established in the previous years of life and the rate of atrophy in these areas during midlife might not be significantly associated with the risk of dementia as defined by CAIDE score. Given that only a very small number of areas showed subtle baseline differences, the differences could also be attributable to inherited volume differences between individuals, and therefore, it is reasonable that some regions showing baseline differences are generally unaffected in AD. On the other hand, it is important to indicate that the cortical regions with differences in longitudinal GM atrophy between groups did not show any difference at baseline. One possible explanation is that these subjects might be at the age when AD signature cortical regions are just beginning to show accelerated atrophy associated with a higher risk of dementia as predicted by CAIDE score, suggesting that possible interventions should be implemented at this age or even earlier.

Strengths of this study include its longitudinal design. The longitudinal image preprocessing stream in CAT12 used in this study was developed and optimized to detect more subtle effects over shorter periods in comparison with traditional cross-sectional preprocessing pipelines and,

therefore, conferred an advantage in this middle-aged and cognitively healthy population, in which any differences related to dementia risk might be more subtle than those normally observed in older age over longer periods of time. CAT12 pipeline is also considered an advanced but computationally less expensive tool in brain volume segmentation [34]. A second strength is that CAIDE score was originally developed in middle-aged subjects, and therefore, it is the most appropriate and sensitive for use in assessments of middle-aged people. Finally, age, gender and education years were adjusted in VBM analyses, and therefore, the increased atrophy associated with high CAIDE score should mainly indicate the impact of vascular factors.

A limitation of this study is that the actual future incidence of dementia in these subjects remains unknown and requires long-term follow-up to reveal the association between CAIDE score, brain atrophy and cognitive decline to a dementia syndrome. Additionally, it should be noted that subjects in the PREVENT-Dementia cohort were all volunteering participants. They might not perfectly reflect the general population, as they were likely to be more concerned about their general health and have been more proactively reducing modifiable risk factors for dementia.

Conclusion

To our knowledge, this is the first longitudinal study to demonstrate accelerated GM atrophy concentrated in the supramarginal gyrus, angular gyrus, precuneus, lateral occipital cortex, superior parietal lobule and cingulate gyrus at middle age associated with high CAIDE score. These findings highlight the possibility and significance of early AD intervention through modifiable midlife vascular risk factors. AD diagnosis and interventions should be implemented early before symptoms occur. Interventions could, in light of present findings of subtle longitudinal GM volume changes occurring in midlife, possibly be informed by CAIDE score and implemented during or even earlier than middle age. Planned longitudinal analysis of the whole PREVENT-Dementia cohort (target recruitment: 700 people) to confirm the specific structures of accelerated atrophy associated with high CAIDE score in midlife and long-term follow-up to investigate the impact on clinical cognitive performance would be valuable. Further investigation into the specific midlife vascular risk factors accelerating GM loss in these regions would be important for the potential development of disease prevention and early intervention strategies.

Acknowledgements We thank all the PREVENT-Dementia participants for their enthusiastic participation in this study. We thank the NIHR Cambridge Biomedical Centre for support.

Author contributions XL performed the image preprocessing, image quality check, image analyses, statistical analyses, and wrote the paper. MED was involved with the image preprocessing and image analysis protocol design. KR helped obtain funding and was involved with the study design. KW oversaw data collection. CWR helped obtain funding, was involved with the study design and is Chief Investigator of the PREVENT-Dementia programme. LS assisted with the implementation of the imaging protocol and oversaw data collection. GMT provided input into the statistical analysis design. JTO'B helped obtain funding, was involved with the study design and supervised the study. All authors read and approved the final manuscript.

Funding The PREVENT-Dementia study is supported by the UK Alzheimer's Society (grant numbers 178 and 264), the US Alzheimer's Association (grant number TriBEKa-17-519007) and philanthropic donations.

Availability of data and materials Data are available upon reasonable request.

Code availability Available upon reasonable request.

Compliance with ethical standards

Conflict of interest On behalf of all authors, the corresponding author states that there is no conflict of interest.

Ethics approval NHS Research Ethics Committee London Camberwell St-Giles (REC reference: 12/LO/1023).

Consent to participate Each participant has given consent to participate in the cohort study.

Consent to publication Not applicable.

Open Access This article is licensed under a Creative Commons Attribution 4.0 International License, which permits use, sharing, adaptation, distribution and reproduction in any medium or format, as long as you give appropriate credit to the original author(s) and the source, provide a link to the Creative Commons licence, and indicate if changes were made. The images or other third party material in this article are included in the article's Creative Commons licence, unless indicated otherwise in a credit line to the material. If material is not included in the article's Creative Commons licence and your intended use is not permitted by statutory regulation or exceeds the permitted use, you will need to obtain permission directly from the copyright holder. To view a copy of this licence, visit <http://creativecommons.org/licenses/by/4.0/>.

References

- McKhann GM, Knopman DS, Chertkow H, Hyman BT, Jack CR Jr, Kawas CH, Klunk WE, Koroshetz WJ, Manly JJ, Mayeux R, Mohs RC, Morris JC, Rossor MN, Scheltens P, Carrillo MC, Thies B, Weintraub S, Phelps CH (2011) The diagnosis of dementia due to Alzheimer's disease: recommendations from the National Institute on Aging-Alzheimer's Association workgroups on diagnostic guidelines for Alzheimer's disease. *Alzheimers Dement* 7(3):263–269. <https://doi.org/10.1016/j.jalz.2011.03.005>
- Ferri CP, Prince M, Brayne C, Brodaty H, Fratiglioni L, Ganguli M, Hall K, Hasegawa K, Hendrie H, Huang Y, Jorm A, Mathers C, Menezes PR, Rimmer E, Sczufca M, Alzheimer's Disease I

- (2005) Global prevalence of dementia: a Delphi consensus study. *Lancet* 366(9503):2112–2117. [https://doi.org/10.1016/S0140-6736\(05\)67889-0](https://doi.org/10.1016/S0140-6736(05)67889-0)
3. Alzheimer's Association (2019) Alzheimer's disease facts and figures. *Alzheimer's Dement* 15(3):321–387. <https://doi.org/10.1016/j.jalz.2019.01.010>
 4. Masters CL, Bateman R, Blennow K, Rowe CC, Sperling RA, Cummings JL (2015) Alzheimer's disease. *Nat Rev Dis Primers* 1(1):15056. <https://doi.org/10.1038/nrdp.2015.56>
 5. Jack CR Jr, Knopman DS, Jagust WJ, Shaw LM, Aisen PS, Weiner MW, Petersen RC, Trojanowski JQ (2010) Hypothetical model of dynamic biomarkers of the Alzheimer's pathological cascade. *Lancet Neurol* 9(1):119–128. [https://doi.org/10.1016/S1474-4422\(09\)70299-6](https://doi.org/10.1016/S1474-4422(09)70299-6)
 6. Braak H, Braak E (1997) Frequency of stages of Alzheimer-related lesions in different age categories. *Neurobiol Aging* 18(4):351–357. [https://doi.org/10.1016/s0197-4580\(97\)00056-0](https://doi.org/10.1016/s0197-4580(97)00056-0)
 7. Ohm TG, Muller H, Braak H, Bohl J (1995) Close-meshed prevalence rates of different stages as a tool to uncover the rate of Alzheimer's disease-related neurofibrillary changes. *Neuroscience* 64(1):209–217. [https://doi.org/10.1016/0306-4522\(95\)90397-p](https://doi.org/10.1016/0306-4522(95)90397-p)
 8. Reiman EM, Uecker A, Caselli RJ, Lewis S, Bandy D, de Leon MJ, De Santi S, Convit A, Osborne D, Weaver A, Thibodeau SN (1998) Hippocampal volumes in cognitively normal persons at genetic risk for Alzheimer's disease. *Ann Neurol* 44(2):288–291. <https://doi.org/10.1002/ana.410440226>
 9. Barnes DE, Yaffe K (2011) The projected effect of risk factor reduction on Alzheimer's disease prevalence. *Lancet Neurol* 10(9):819–828. [https://doi.org/10.1016/S1474-4422\(11\)70072-2](https://doi.org/10.1016/S1474-4422(11)70072-2)
 10. Norton S, Matthews FE, Barnes DE, Yaffe K, Brayne C (2014) Potential for primary prevention of Alzheimer's disease: an analysis of population-based data. *Lancet Neurol* 13(8):788–794. [https://doi.org/10.1016/S1474-4422\(14\)70136-X](https://doi.org/10.1016/S1474-4422(14)70136-X)
 11. Stephen R, Liu Y, Ngandu T, Rinne JO, Kempainen N, Parkkola R, Laatikainen T, Paajanen T, Hanninen T, Strandberg T, Antikainen R, Tuomilehto J, Keinanen Kiukaanniemi S, Van-ninen R, Helisalmi S, Levalahti E, Kivipelto M, Soininen H, Solomon A (2017) Associations of CAIDE Dementia Risk Score with MRI, PIB-PET measures, and cognition. *J Alzheimers Dis* 59(2):695–705. <https://doi.org/10.3233/JAD-170092>
 12. Mosconi L, Walters M, Sterling J, Quinn C, McHugh P, Andrews RE, Matthews DC, Ganzer C, Osorio RS, Isaacson RS, De Leon MJ, Convit A (2018) Lifestyle and vascular risk effects on MRI-based biomarkers of Alzheimer's disease: a cross-sectional study of middle-aged adults from the broader New York City area. *BMJ Open* 8(3):e019362. <https://doi.org/10.1136/bmjopen-2017-019362>
 13. McIntosh EC, Jacobson A, Kemmotsu N, Pongpipat E, Green E, Haase L, Murphy C (2017) Does medial temporal lobe thickness mediate the association between risk factor burden and memory performance in middle-aged or older adults with metabolic syndrome? *Neurosci Lett* 636:225–232. <https://doi.org/10.1016/j.neulet.2016.10.010>
 14. Kivipelto M, Ngandu T, Laatikainen T, Winblad B, Soininen H, Tuomilehto J (2006) Risk score for the prediction of dementia risk in 20 years among middle aged people: a longitudinal, population-based study. *Lancet Neurol* 5(9):735–741. [https://doi.org/10.1016/S1474-4422\(06\)70537-3](https://doi.org/10.1016/S1474-4422(06)70537-3)
 15. Ritchie K, Carriere I, Su L, O'Brien JT, Lovestone S, Wells K, Ritchie CW (2017) The midlife cognitive profiles of adults at high risk of late-onset Alzheimer's disease: the PREVENT study. *Alzheimers Dement* 13(10):1089–1097. <https://doi.org/10.1016/j.jalz.2017.02.008>
 16. O'Brien JT, Firbank MJ, Ritchie K, Wells K, Williams GB, Ritchie CW, Su L (2020) Association between midlife dementia risk factors and longitudinal brain atrophy: the PREVENT-Dementia study. *J Neurol Neurosurg Psychiatry* 91(2):158–161. <https://doi.org/10.1136/jnnp-2019-321652>
 17. Ritchie CW, Ritchie K (2012) The PREVENT study: a prospective cohort study to identify mid-life biomarkers of late-onset Alzheimer's disease. *BMJ Open* 2(6):e001893. <https://doi.org/10.1136/bmjopen-2012-001893>
 18. Farrer LA, Cupples LA, Haines JL, Hyman B, Kukull WA, Mayeux R, Myers RH, Pericak-Vance MA, Risch N, van Duijn CM (1997) Effects of age, sex, and ethnicity on the association between apolipoprotein E genotype and Alzheimer disease. A meta-analysis. APOE and Alzheimer Disease Meta Analysis Consortium. *JAMA* 278(16):1349–1356
 19. Exalto LG, Quesenberry CP, Barnes D, Kivipelto M, Biessels GJ, Whitmer RA (2014) Midlife risk score for the prediction of dementia four decades later. *Alzheimers Dement* 10(5):562–570. <https://doi.org/10.1016/j.jalz.2013.05.1772>
 20. Good CD, Johnsrude IS, Ashburner J, Henson RN, Friston KJ, Frackowiak RS (2001) A voxel-based morphometric study of ageing in 465 normal adult human brains. *Neuroimage* 14(1 Pt 1):21–36. <https://doi.org/10.1006/nimg.2001.0786>
 21. Dahnke R, Yotter RA, Gaser C (2013) Cortical thickness and central surface estimation. *Neuroimage* 65:336–348. <https://doi.org/10.1016/j.neuroimage.2012.09.050>
 22. Ashburner J, Friston KJ (2005) Unified segmentation. *Neuroimage* 26(3):839–851. <https://doi.org/10.1016/j.neuroimage.2005.02.018>
 23. Winkler AM, Ridgway GR, Webster MA, Smith SM, Nichols TE (2014) Permutation inference for the general linear model. *Neuroimage* 92:381–397. <https://doi.org/10.1016/j.neuroimage.2014.01.060>
 24. Holmes AP, Blair RC, Watson JD, Ford I (1996) Nonparametric analysis of statistic images from functional mapping experiments. *J Cereb Blood Flow Metab* 16(1):7–22. <https://doi.org/10.1097/00004647-199601000-00002>
 25. Dickerson BC, Bakkour A, Salat DH, Feczko E, Pacheco J, Greve DN, Grodstein F, Wright CI, Blacker D, Rosas HD, Sperling RA, Atri A, Growdon JH, Hyman BT, Morris JC, Fischl B, Buckner RL (2009) The cortical signature of Alzheimer's disease: regionally specific cortical thinning relates to symptom severity in very mild to mild AD dementia and is detectable in asymptomatic amyloid-positive individuals. *Cereb Cortex* 19(3):497–510. <https://doi.org/10.1093/cercor/bhn113>
 26. Cavanna AE, Trimble MR (2006) The precuneus: a review of its functional anatomy and behavioural correlates. *Brain* 129(Pt 3):564–583. <https://doi.org/10.1093/brain/awl004>
 27. Cunningham SI, Tomasi D, Volkow ND (2017) Structural and functional connectivity of the precuneus and thalamus to the default mode network. *Hum Brain Mapp* 38(2):938–956. <https://doi.org/10.1002/hbm.23429>
 28. Seghier ML (2013) The angular gyrus: multiple functions and multiple subdivisions. *Neuroscientist* 19(1):43–61. <https://doi.org/10.1177/1073858412440596>
 29. Whitlock JR (2017) Posterior parietal cortex. *Curr Biol* 27(14):R691–R695. <https://doi.org/10.1016/j.cub.2017.06.007>
 30. Bakkour A, Morris JC, Dickerson BC (2009) The cortical signature of prodromal AD: regional thinning predicts mild

- AD dementia. *Neurology* 72(12):1048–1055. <https://doi.org/10.1212/01.wnl.0000340981.97664.2f>
31. Vuorinen M, Spulber G, Damangir S, Niskanen E, Ngandu T, Soininen H, Kivipelto M, Solomon A (2015) Midlife CAIDE dementia risk score and dementia-related brain changes up to 30 years later on magnetic resonance imaging. *J Alzheimers Dis* 44(1):93–101. <https://doi.org/10.3233/JAD-140924>
 32. Enache D, Solomon A, Cavallin L, Kareholt I, Kramberger MG, Aarsland D, Kivipelto M, Eriksson M, Winblad B, Jelic V (2016) CAIDE Dementia Risk Score and biomarkers of neurodegeneration in memory clinic patients without dementia. *Neurobiol Aging* 42:124–131. <https://doi.org/10.1016/j.neurobiolaging.2016.03.007>
 33. Licher S, Yilmaz P, Leening MJG, Wolters FJ, Vernooij MW, Stephan BCM, Ikram MK, Ikram MA (2018) External validation of four dementia prediction models for use in the general community-dwelling population: a comparative analysis from the Rotterdam Study. *Eur J Epidemiol* 33(7):645–655. <https://doi.org/10.1007/s10654-018-0403-y>
 34. Tavares V, Prata D, Ferreira HA (2020) Comparing SPM12 and CAT12 segmentation pipelines: a brain tissue volume-based age and Alzheimer's disease study. *J Neurosci Methods* 334:108565. <https://doi.org/10.1016/j.jneumeth.2019.108565>