

Reef sites

An old and massive colony of *Pavona decussata* is sexually active at high latitude (32°N) in Japan

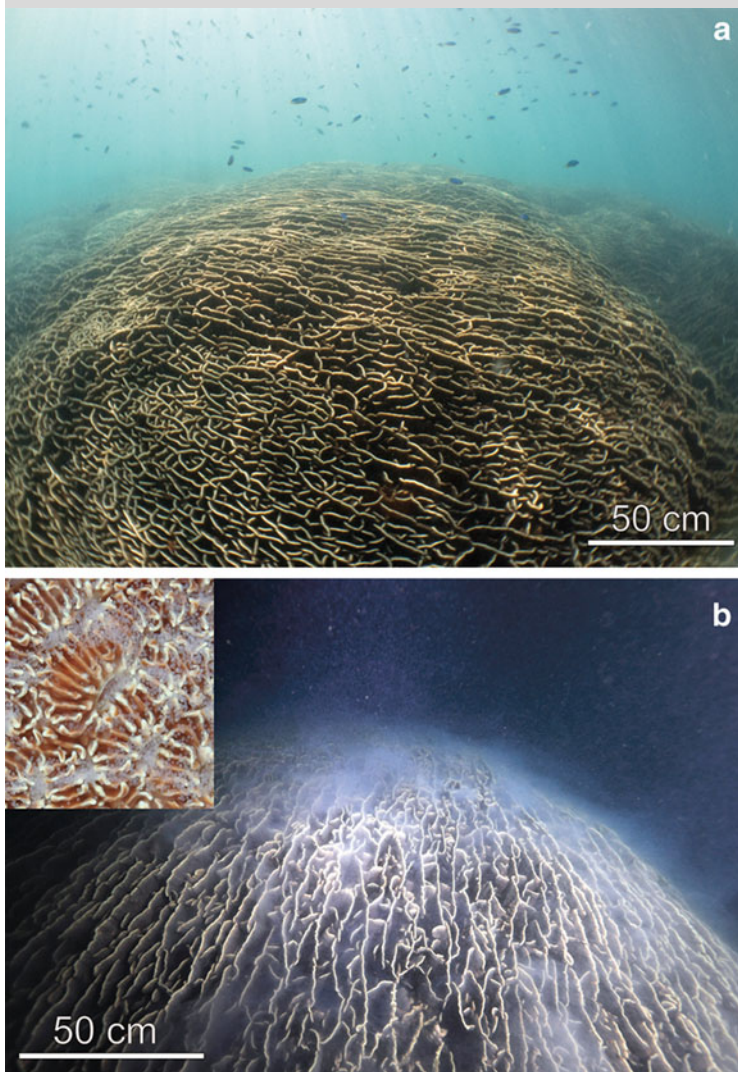


Fig. 1 a Wide-angle view of *Pavona decussata* colony in Tatsukushi Marine Park, Kochi, Japan. b Wide-angle and close-up (inset photo) view of the colony releasing eggs

References

- Irikawa A, Casareto BE, Suzuki Y, Agostini S, Hidaka M, van Woesik R (2011) Growth anomalies on *Acropora cytherea* corals. *Mar Pollut Bull* 62:1702–1707
- Rinkevich B, Loya Y (1986) Senescence and dying signals in a reef building coral. *Experientia* 42:320–322
- Tokioka T (1968) Preliminary observations made by Mr. S. Hamahira on the growth of the giant colony of the Madrepোরarian coral *Pavona frondifera* Lamarck, found in a cove on the southwestern coast of Sikoku Island. *Publ Seto Mar Biol Lab XVI* 1:55–59

T. Mezaki (✉)

Biological Institute on Kuroshio, Nishidomari, Otsuki-cho, Kochi, Japan
e-mail: mezaki@kuroshio.or.jp

S. Keshavmurthy · C. A. Chen
Biodiversity Research Center, Academia Sinica, Nangang, Taipei 115, Taiwan

Received: 20 May 2013 / Accepted: 1 September 2013 / Published online: 22 September 2013
© Springer-Verlag Berlin Heidelberg 2013

Coral Reefs (2014) 33:97
DOI 10.1007/s00338-013-1080-7