

Polymorphism of *SFBB*^{-γ} and its use for *S* genotyping in Japanese pear (*Pyrus pyrifolia*)

Hiroyuki Kakui · Takeshi Tsuzuki · Takato Koba ·
Hidenori Sassa

Published online: 25 September 2008
© Springer-Verlag 2008

Erratum to: Plant Cell Rep (2007) 26:1619–1625
DOI 10.1007/s00299-007-0386-8

In the article, we have found an error in the legend to Fig. 2. The restriction enzyme ‘HpyCH4IV’ is wrong and should be replaced by ‘BbvCI’. Please see below Fig. 2 with the correct figure legend.

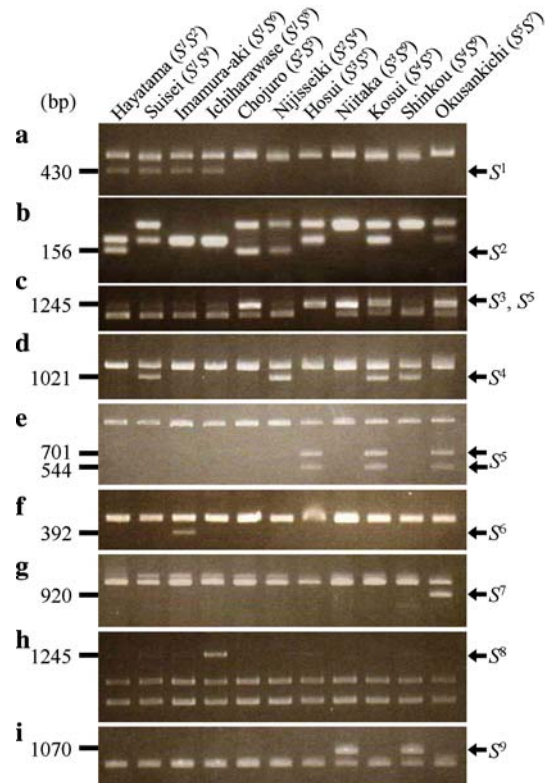


Fig. 2 *S* haplotype-specific sequence polymorphisms of *PpSFBB*^{-γ} genes. The *S* haplotype-specific fragments were detected by CAPS and dCAPS analysis. Amplified *PpSFBB*^{-γ} genes were digested with nine restriction endonucleases; *TaqI* (a), *RsaI* (b), *BbvCI* (c), *NspI* (d), *AflII* (e), *DdeI* (f), *PstI* (g), *SmaI* (h) and *HaeIII* (i). Arrows and numbers show the representative *S* haplotype specific fragments and their sizes (bp), respectively (see Table 1)

The online version of the original article can be found under doi:10.1007/s00299-007-0386-8.

H. Kakui
Graduate School of Science and Technology, Chiba University,
648 Matsudo, Matsudo, Chiba 271-8510, Japan

T. Tsuzuki · T. Koba · H. Sassa (✉)
Faculty of Horticulture, Chiba University, 648 Matsudo,
Matsudo, Chiba 271-8510, Japan
e-mail: sassa@faculty.chiba-u.jp