

Chronic progressive ankle pain

Zaid Jibri^{1,2} · Ryan Foster^{1,2} · Kawan Rakhra^{1,2}

Published online: 27 February 2017
© ISS 2017

A 33-year-old male presented with progressive atraumatic left ankle pain of 20 years duration. Clinical assessment revealed anterolateral ankle tenderness with stiffness at the subtalar joint. Ankle MRI was performed (Fig. 1).

Compliance with ethical standards

Conflict of interest The authors declare that they have no conflict of interest.

The diagnosis can be found at doi: [10.1007/s00256-017-2586-9](https://doi.org/10.1007/s00256-017-2586-9)

✉ Zaid Jibri
zaid.jibri@icloud.com

¹ Department of Medical Imaging, The Ottawa Hospital, Ottawa, Ontario, Canada

² Department of Radiology, University of Ottawa, Ottawa, Ontario, Canada

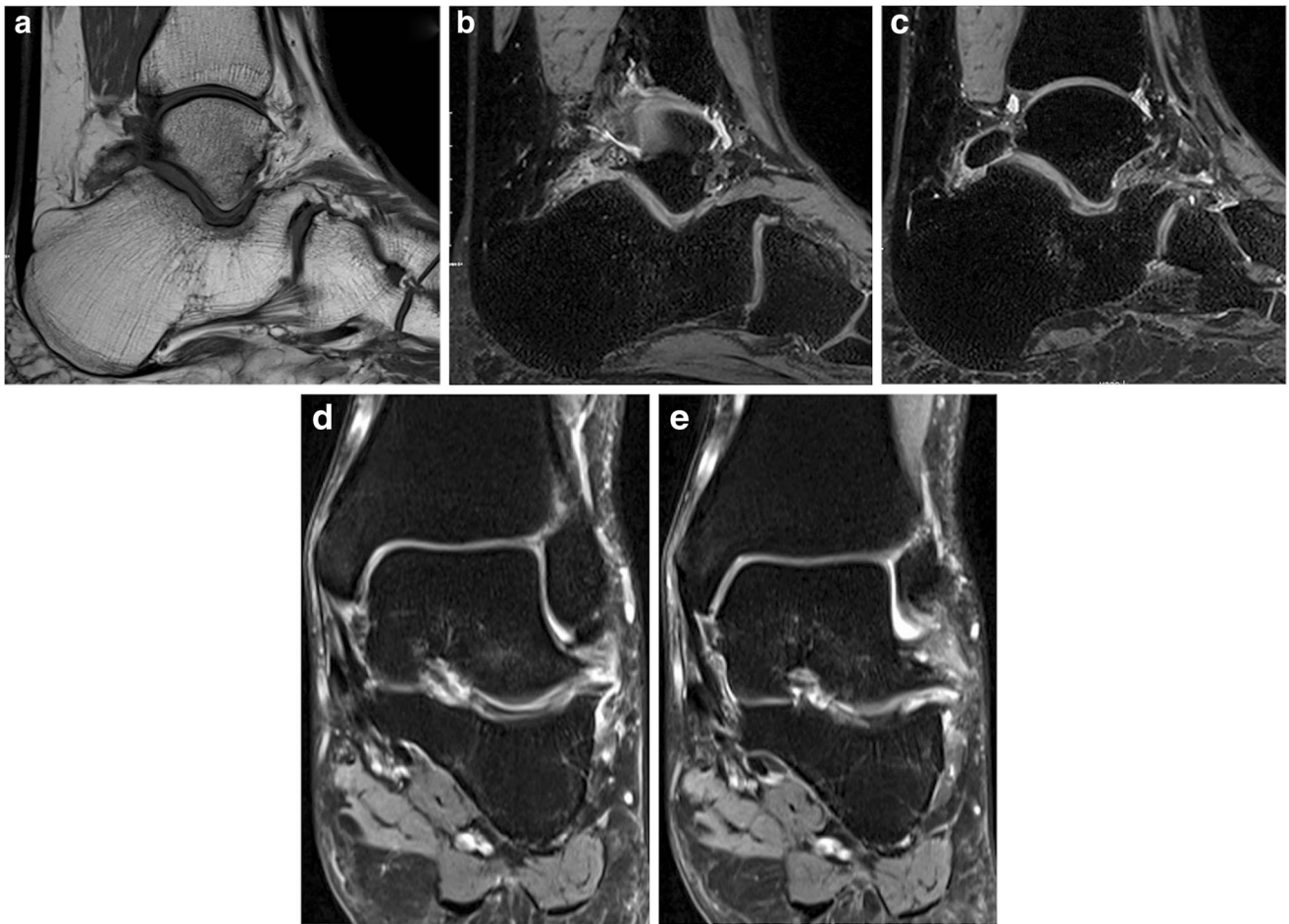


Fig 1 Left ankle MRI. Sagittal T1 (a), sagittal MRI SPACE (sampling perfection with application optimized contrasts using different flip angle evolution) with fat saturation (b, c), coronal PDFS (proton density with fat suppression) (d, e)