

Groin pain

Farouk Dako¹ · Sayed Ali¹

Published online: 29 November 2016
© ISS 2016

Presentation

Eighty-four year old female with history of knee osteoarthritis presents with new onset groin pain. Pelvis and femur radiographs show a lesion in the proximal right femur (Figs. 1, 2 and 3)

Compliance with ethical standards

Conflict of interest The authors declare that they have no conflict of interest

The diagnosis can be found at doi: [10.1007/s00256-016-2546-9](https://doi.org/10.1007/s00256-016-2546-9)

✉ Farouk Dako
fdako123@gmail.com

¹ Department of Radiology, Temple University Hospital, 3401 North Broad Street., Philadelphia, PA 19140, USA

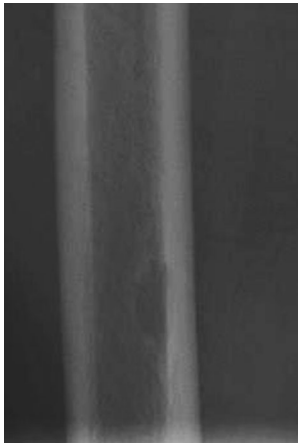


Fig. 1 Coned AP radiograph of the proximal femur

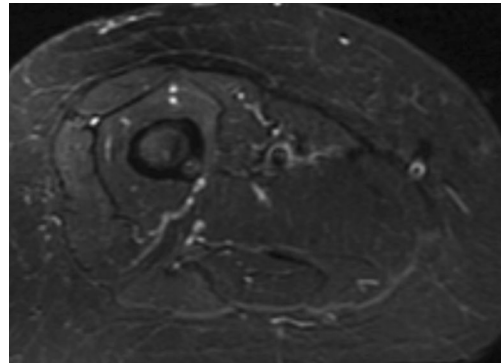


Fig. 3 Corresponding axial fat suppressed FSE T2weighted image

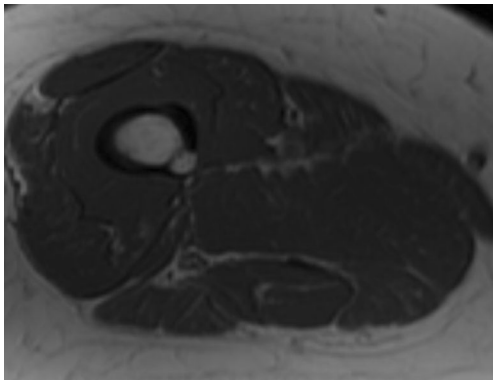


Fig. 2 Corresponding axial T1 weighted image of the proximal femur