

Sixty-five-year-old female with complaint of spontaneous acute pain at the lateral aspect of the knee

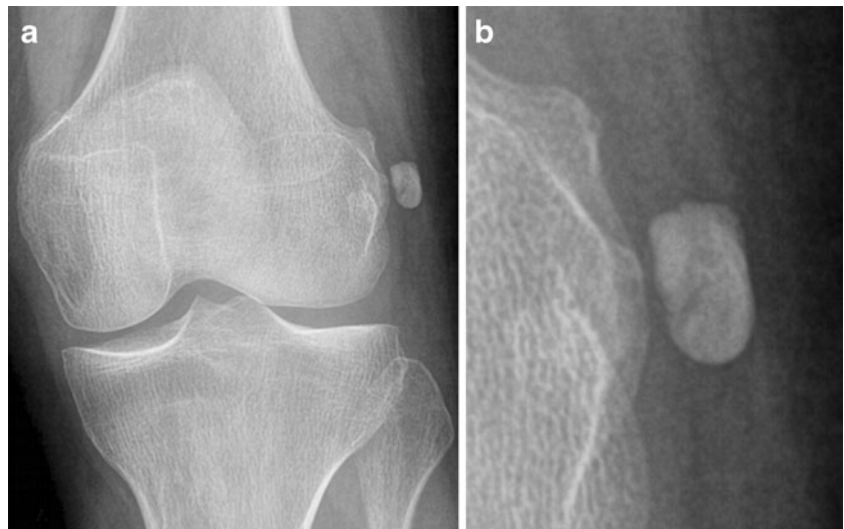
Andrea Zagarella · Maria Chiara Castoldi

Published online: 3 July 2012
© ISS 2012

A healthy 65-year-old female was admitted to the emergency department complaining of acute pain at the lateral aspect of the knee. She had no history of trauma or rheumatological disorders. Radiographs of the knee were performed (Fig. 1), and

non-steroidal anti-inflammatory medications (NSAID) were administered. After eight days of symptomatic relief, she was referred suffering acute pain, again at the same site. An MRI scan was then obtained for further investigation (Fig. 2).

Fig. 1 **a** Anteroposterior plain radiograph of the knee obtained at the emergency department; **b** enlarged detail of femoral cortex and calcifying lesion



The diagnosis can be found at doi:10.1007/s00256-012-1480-8

A. Zagarella (✉) · M. C. Castoldi
Department of Radiology,
Orthopedic Traumatological Center (CTO-ICP),
Via Bignami 1,
20126 Milan, Italy
e-mail: andrea.zagarella@icp.mi.it

M. C. Castoldi
e-mail: maria.castoldi@icp.mi.it

Fig. 2 MRI scan acquired eight days after initial onset of symptoms: **a** STIR weighted image (TR/TE/TI:3600/20/90) coronal view; **b** MRI T2-weighted image (TE=100; TR=5100) axial view

