

## Erratum to: Knee contact forces and lower extremity support moments during running in young individuals post-partial meniscectomy

R. W. Willy<sup>1</sup>  · M. A. Bigelow<sup>2</sup> · A. Kolesar<sup>2</sup> · J. D. Willson<sup>1</sup> · J. S. Thomas<sup>2</sup>

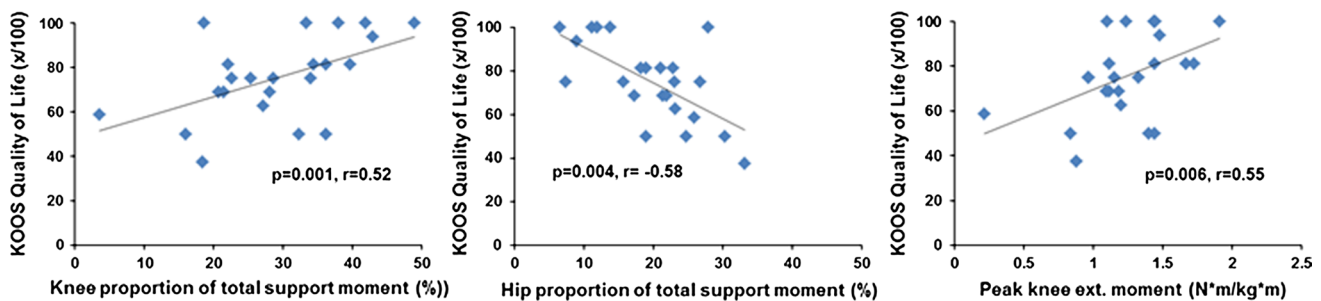
Published online: 20 September 2016

© European Society of Sports Traumatology, Knee Surgery, Arthroscopy (ESSKA) 2016

### Erratum to: Knee Surg Sports Traumatol Arthrosc DOI 10.1007/s00167-016-4143-9

In the original publication of the article, Fig. 4 did not include the peak knee extension moment data.

The correct Fig. 4 is given below:



**Fig. 4** Correlational analysis (Pearson's  $r$ ) for significant biomechanical measures in the PM limb and the KOOS Quality of Life subscale

The online version of the original article can be found under  
doi:[10.1007/s00167-016-4143-9](https://doi.org/10.1007/s00167-016-4143-9).

✉ R. W. Willy  
willyr@ecu.edu

<sup>1</sup> Department of Physical Therapy, College of Allied Health Sciences, East Carolina University, Mail Stop: 668 Allied Health, Greenville, NC 27834, USA

<sup>2</sup> Division of Physical Therapy, College of Health Sciences, Ohio University, Athens, OH 45701, USA