

**Julia Hasslacher**  
**Georg Franz Lehner**  
**Ulrich Harler**  
**Ronny Beer**  
**Hanno Ulmer**  
**Rudolf Kirchmair**  
**Reiner Fischer-Colbrie**  
**Romuald Bellmann**  
**Stefan Dunzendorfer**  
**Michael Joannidis**

## **Erratum to: Secretoneurin as a marker for hypoxic brain injury after cardiopulmonary resuscitation**

---

Published online: 19 September 2014  
© Springer-Verlag Berlin Heidelberg and ESICM 2014

---

The online version of the original article can be found under doi:[10.1007/s00134-014-3423-4](https://doi.org/10.1007/s00134-014-3423-4).

---

J. Hasslacher · G. F. Lehner · U. Harler · R. Bellmann · S. Dunzendorfer · M. Joannidis (✉)  
Division of Intensive Care and Emergency Medicine, Department of Internal Medicine I, Medical University Innsbruck, Anichstr. 35, 6020 Innsbruck, Austria  
e-mail: michael.joannidis@i-med.ac.at  
Tel.: 0512-504-24180

R. Kirchmair  
Department of Internal Medicine III, Medical University Innsbruck, Innsbruck, Austria

R. Fischer-Colbrie  
Department of Pharmacology, Medical University Innsbruck, Innsbruck, Austria

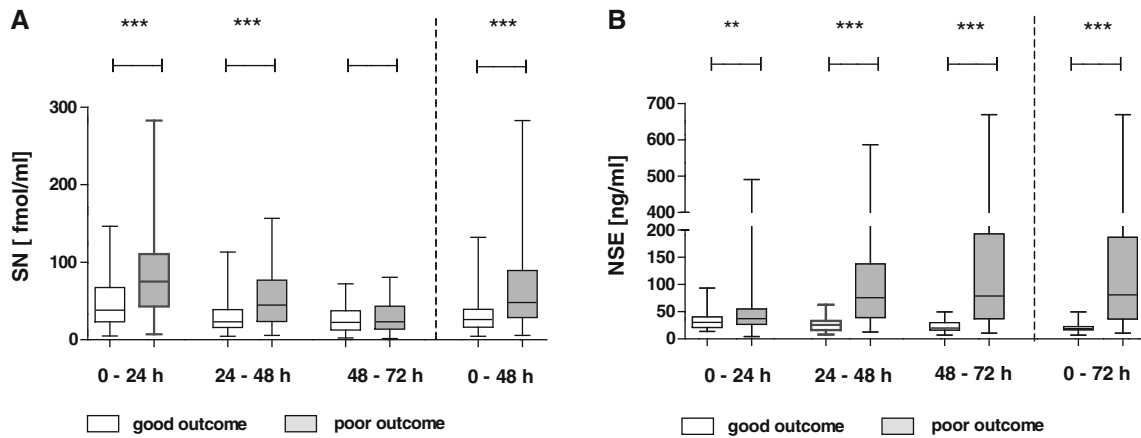
R. Beer  
Department of Neurology, Medical University Innsbruck, Innsbruck, Austria

H. Ulmer  
Department of Medical Statistics, Informatics and Health Economics, Medical University Innsbruck, Innsbruck, Austria

---

### **Erratum to: Intensive Care Med DOI 10.1007/s00134-014-3423-4**

Owing to oversights in typesetting, this article was published with errors in the legend of Fig. 1 and the column heads of Table 2. These mistakes are rectified here.



**Fig. 1 a** Secretoneurin (SN) serum levels of patients with good and poor outcome. SN levels [fmol/ml] in the first 72 h after CPR comparing patients with good and poor outcome; *n* (total) = 134; *n* (0–24 h) = 111; *n* (24–48 h) = 98; *n* (48–72 h) = 77; *n* (0–48 h) = 125. Graph shows median and range. \*\*\**p* < 0.001. **b** Neuron-specific

enolase (NSE) serum levels of patients with good and poor outcome. NSE levels [ng/ml] in the first 72 h after CPR comparing patients with good and poor outcome; *n* (total) = 134; *n* (0–24 h) = 119; *n* (24–48 h) = 87; *n* (48–72 h) = 57; *n* (0–72 h) = 128. Graph shows median and range. \*\**p* < 0.01, \*\*\**p* < 0.001

**Table 2** Diagnostic accuracy of either SN or NSE at different time intervals to predict poor neurological outcome

	Cut-off	AUC	Sens (%)	Spec (%)	PPV (%)	NPV (%)
SN 0–24 h	121 fmol/mL	0.708 [0.611–0.806]	23	95	80	57
SN 24–48 h	58 fmol/mL	0.711 [0.606–0.816]	32	95	82	63
SN 48–72 h	54 fmol/mL	0.552 [0.417–0.687]	13	96	67	63
SN 0–48 h	65 fmol/mL	0.753 [0.665–0.841]	38	95	88	62
NSE 0–24 h	33 ng/mL	0.645 [0.546–0.743]	57	64	64	57
NSE 24–48 h	33 ng/mL	0.860 [0.778–0.943]	81	76	76	81
NSE 48–72 h	33 ng/mL	0.883 [0.787–0.979]	83	84	83	82
NSE 0–72 h	33 ng/mL	0.881 [0.815–0.946]	80	81	80	79

*AUC* area under the curve, *Sens* sensitivity, *Spec* specificity, *PPV* positive predictive value, *NPV* negative predictive value, *SN* secretoneurin, *NSE* neuron-specific enolase