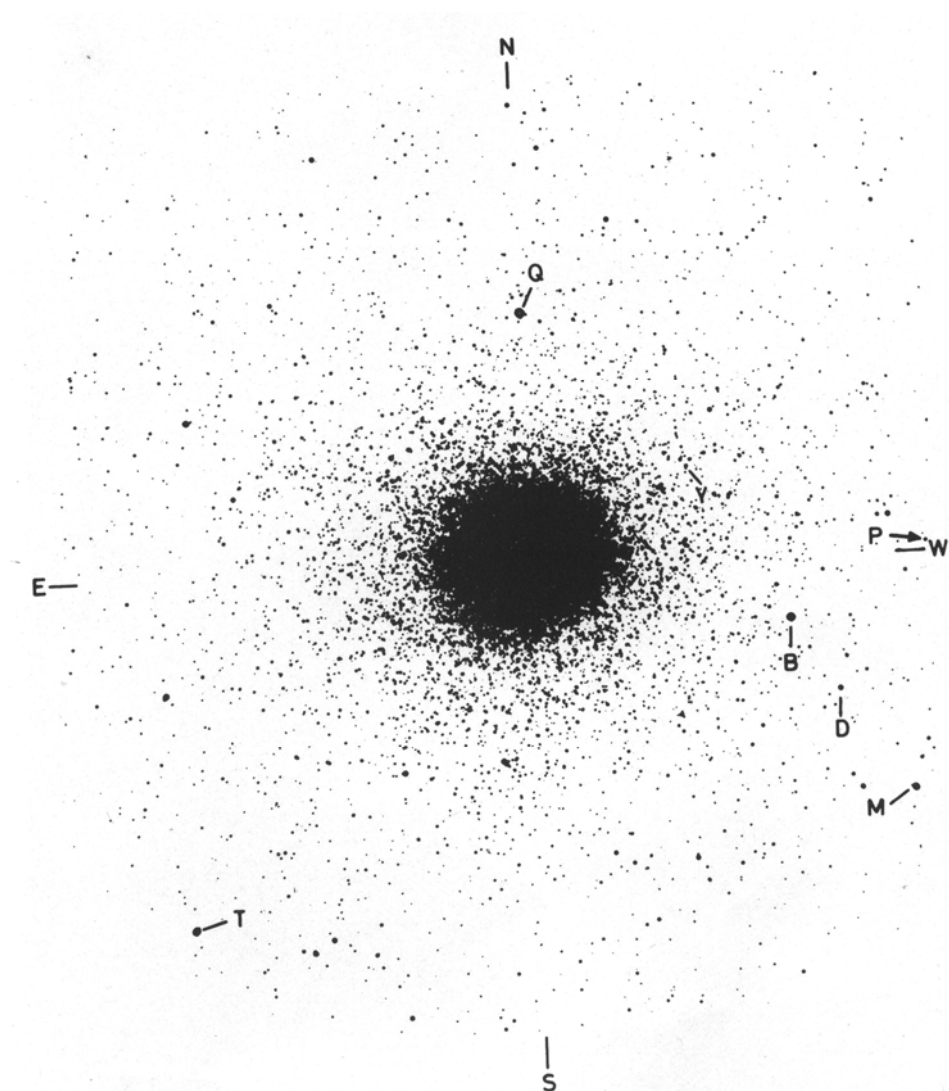


## Corrigendum

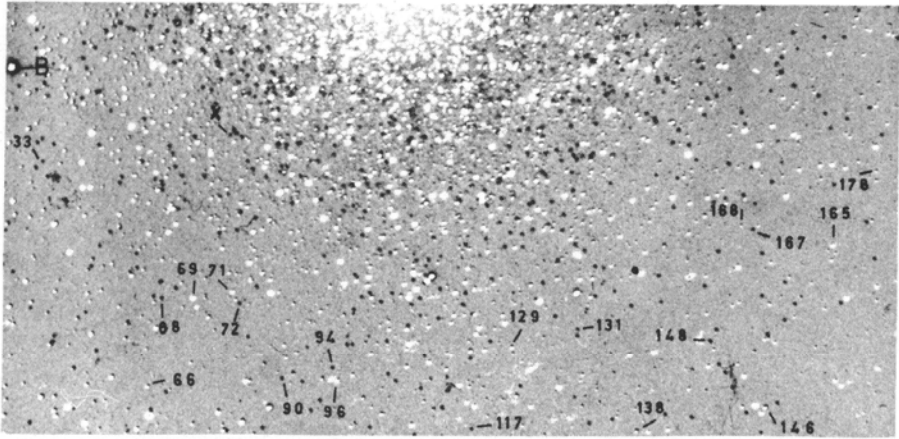
‘ Mass Segregation in Globular Clusters’ by K. K. Scaria and M. K. V. Bappu was published in *Journal of Astrophysics and Astronomy*, Volume 2, Number 3, September 1981.

Figs 14 and 15 should be replaced by the ones reproduced here.

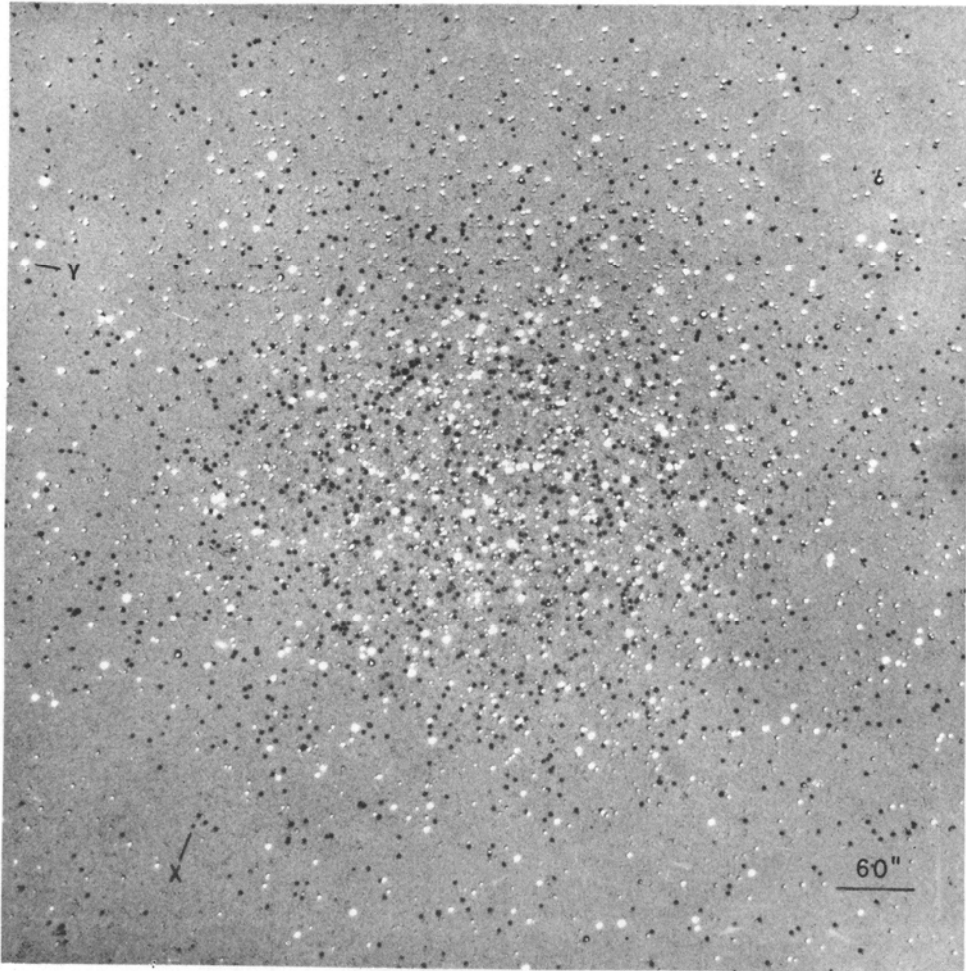


**Figure 14.**  $\omega$  Cen in *B* Band taken with the 102 cm reflector at Kavalur. Stars marked *T* and *M* are the reference stars for the equidensitometry of the cluster. Star *P* is the reference star for the scan in the east-west direction and star *Q* is reference star for the north-south scan. Stars *B* and *D* are the two photoelectric standards. Star *Y* has been identified in Fig. 15(b) which shows the distribution of blue stars.

(a)



(b)



**Figure 15.** Distribution of horizontal branch stars in w Cen. (a) Outer region: 20 stars with *UBV* photometry by Geyer (1967) are identified. Stars having colour  $B-V < 0.4$  mag are seen as dark points while red stars are seen as white points. (b) Inner region: Star *X* is marked to allow an easy comparison of the two figures.