

ERRATUM

Erratum to: Low expression of ULK1 is associated with operable breast cancer progression and is an adverse prognostic marker of survival for patients

Jun Tang^{1,2} · Rong Deng¹ · Rong-Zhen Luo^{1,3} · Guo-Ping Shen¹ · Mu-Yan Cai^{1,3} ·
Zi-Ming Du^{1,3} · Shan Jiang¹ · Ming-Tian Yang^{1,2} · Jian-Hua Fu^{1,4} ·
Xiao-Feng Zhu¹

Published online: 9 March 2016
© Springer Science+Business Media New York 2016

Erratum to: Breast Cancer Res Treat (2012)
134:549–560
DOI 10.1007/s10549-012-2080-y

In the original publication of the article, Fig. 5c was published incorrectly. The authors apologize for this error and the correct Fig. 5c is given below.

The online version of the original article can be found under doi:[10.1007/s10549-012-2080-y](https://doi.org/10.1007/s10549-012-2080-y).

✉ Jian-Hua Fu
fujh@sysucc.org.cn

✉ Xiao-Feng Zhu
zhuxfeng@mail.sysu.edu.cn

¹ State Key Laboratory of Oncology in South China, Cancer Center, Sun Yat-sen University, Guangzhou, China

² Department of Breast Oncology, Cancer Center, Sun Yat-sen University, Guangzhou, China

³ Department of Pathology, Cancer Center, Sun Yat-sen University, Guangzhou, China

⁴ Department of Thoracic Surgery, Cancer Center, Sun Yat-sen University, Guangzhou, China

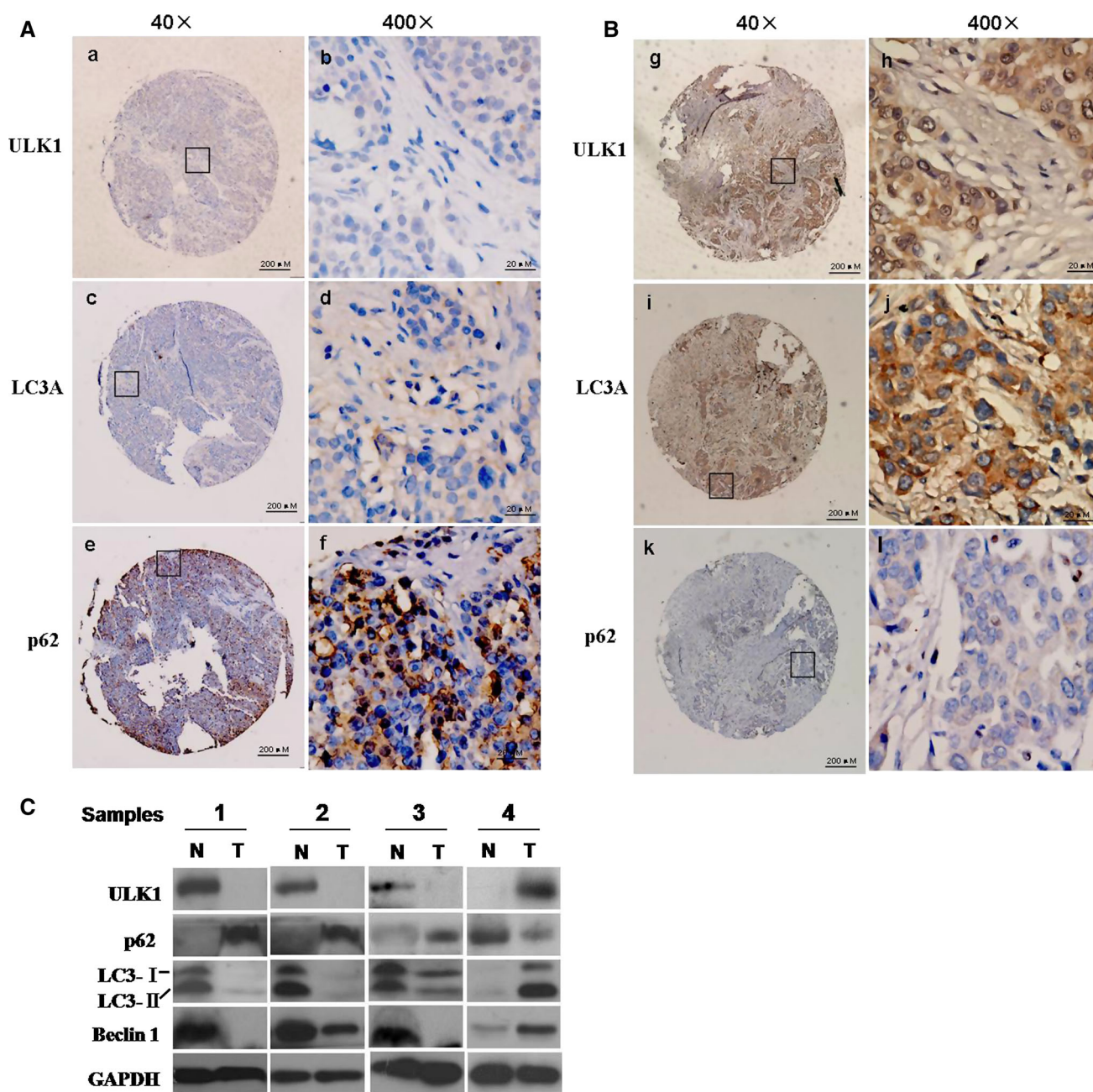


Fig. 5 Correlation between the expression of ULK1 and autophagic activity in breast cancer tissues. **A** Low expression of ULK1 (*a, b*) associated with low expression of LC3A (*c, d*) and high expression of p62 (*e, f*) was observed on the serial section of the same case 188. **B** High expression of ULK1 (*g, h*) associated with high expression of

LC3A (*i, j*) and low expression of p62 (*k, l*) was observed on the serial section of the same case 281. **C** Western blot results of ULK1, p62, LC3 and Beclin1 protein expression in four pairs of matched breast tissue. GAPDH was used as loading control