

Age-related Task Sensitivity of Frontal EEG Entropy
during Encoding predicts Retrieval
Supplementary Materials

Denis O'Hora Stefan Schinkel Michael J. Hogan Liam Kilmartin Michael Keane
 Robert Lai Neil Upton

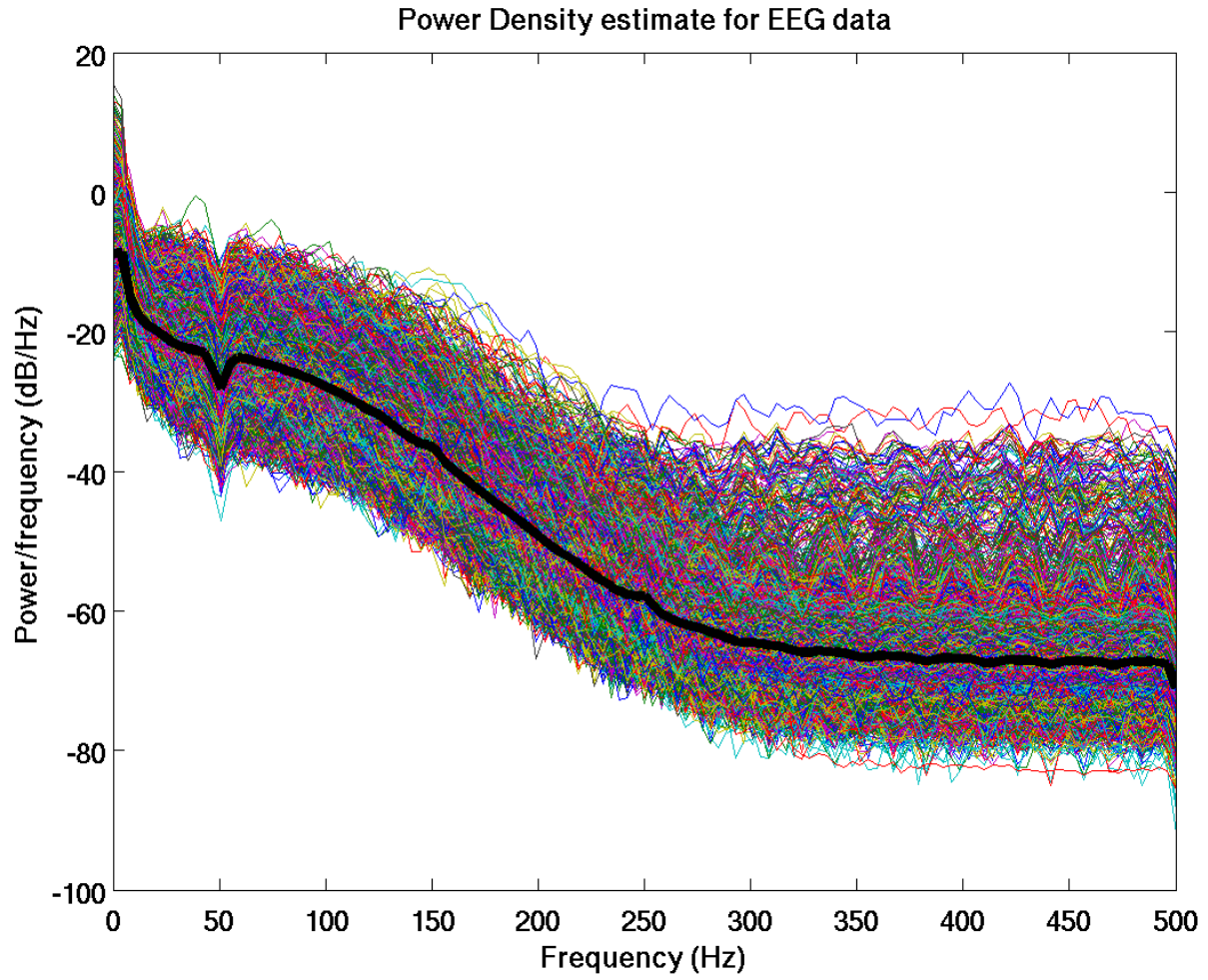


Figure 1: Estimated power spectrum of EEG data used for analysis, computed for each channel in each subject. Average in bold line.

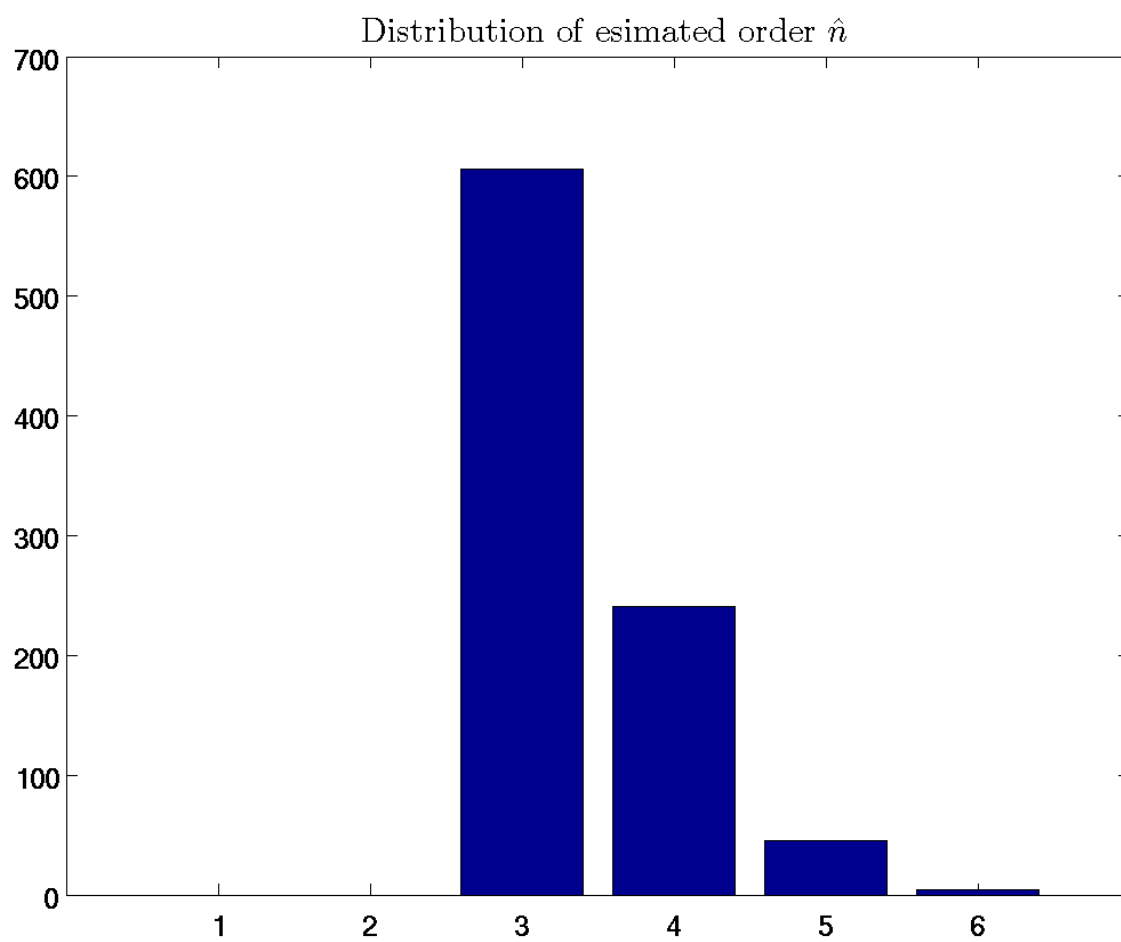


Figure 2: Estimated order of the EEG used for analysis,computed for each channel in each subject.

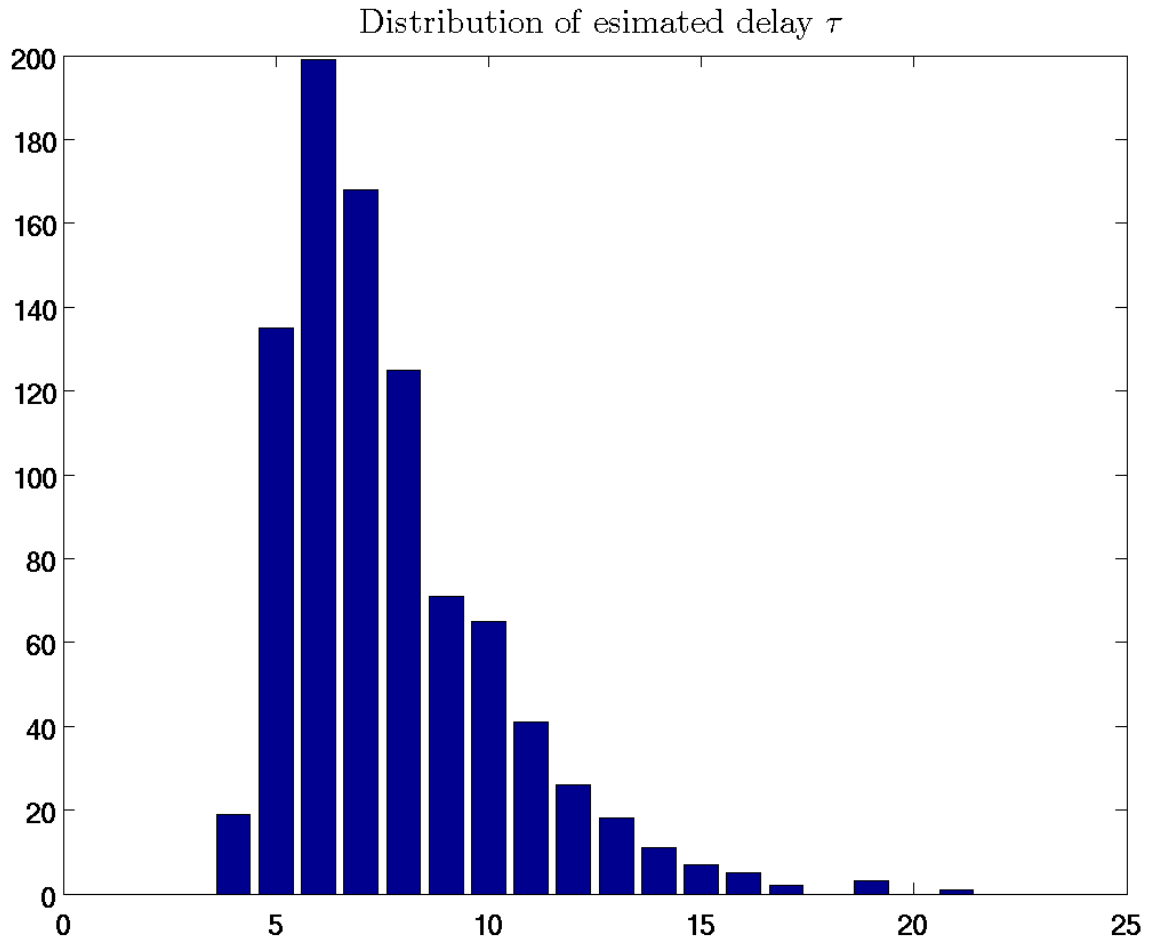


Figure 3: Estimated delay (τ) of the EEG used for analysis, computed for each channel in each subject.

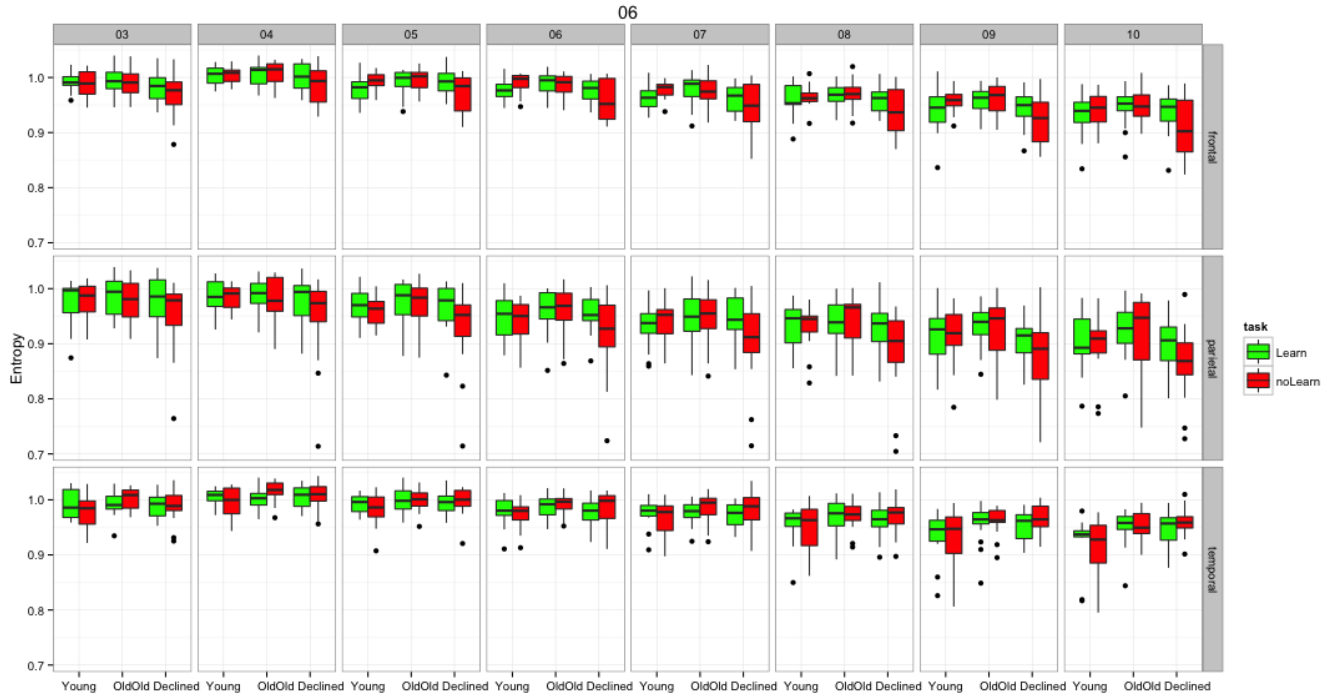


Figure 4: PermEN as a function of the delay for Dimension 06

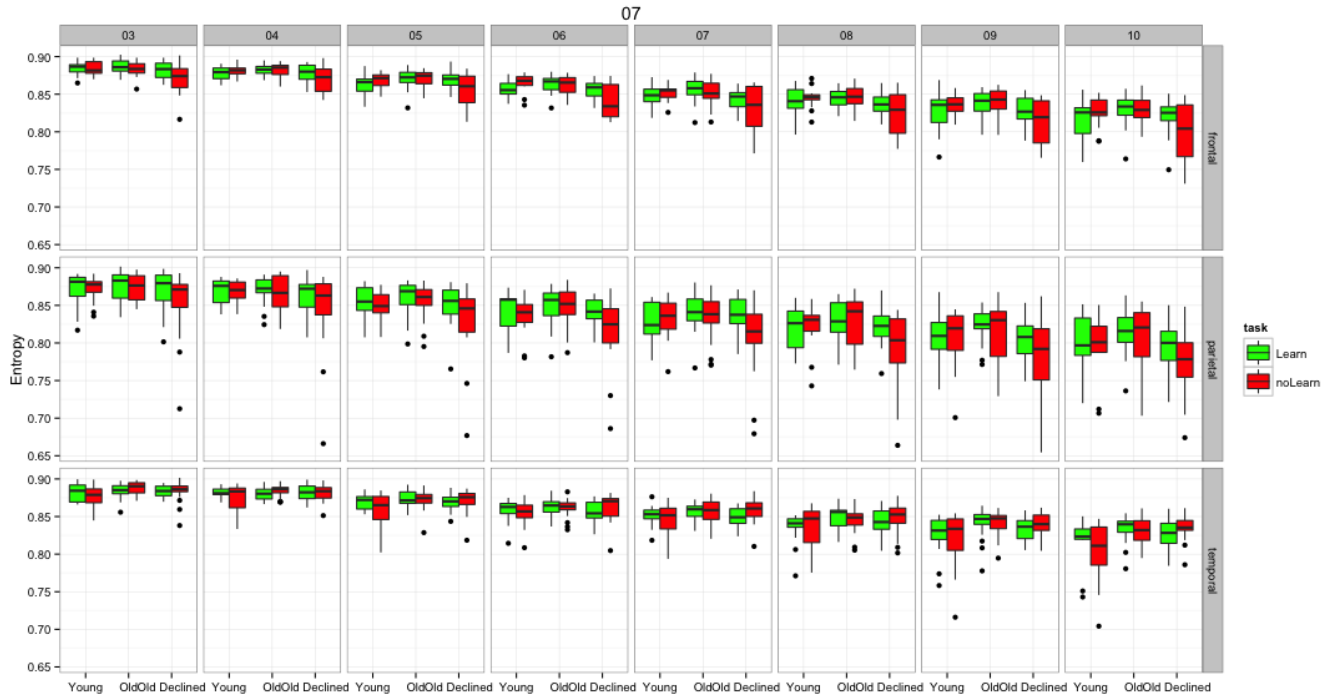


Figure 5: PermEN as a function of the delay for Dimension 07

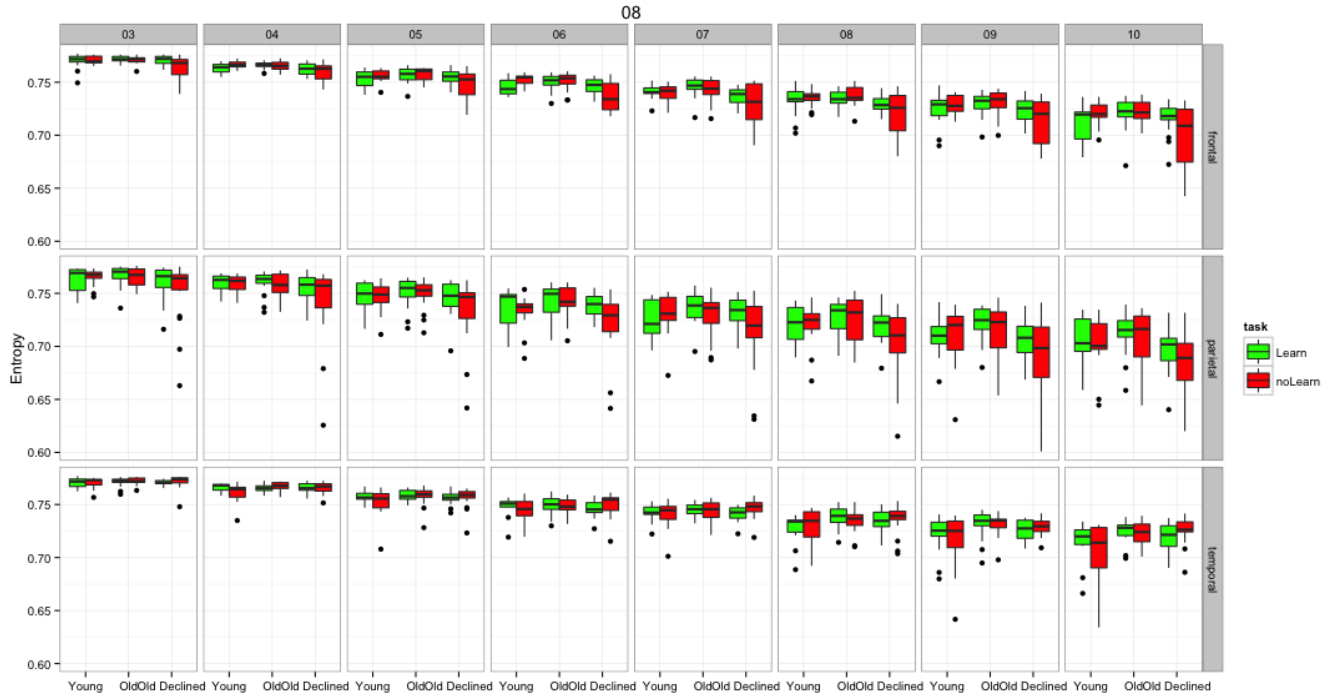


Figure 6: PermEN as a function of the delay for Dimension 08

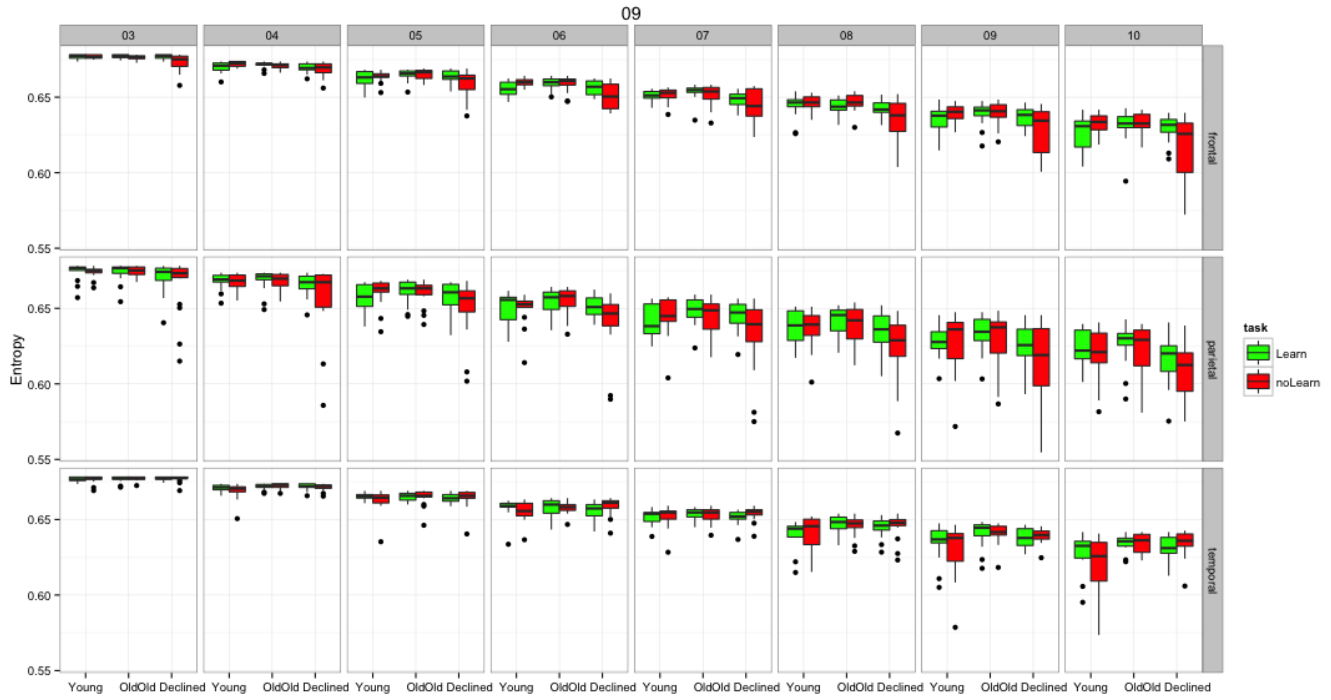


Figure 7: PermEN as a function of the delay for Dimension 09

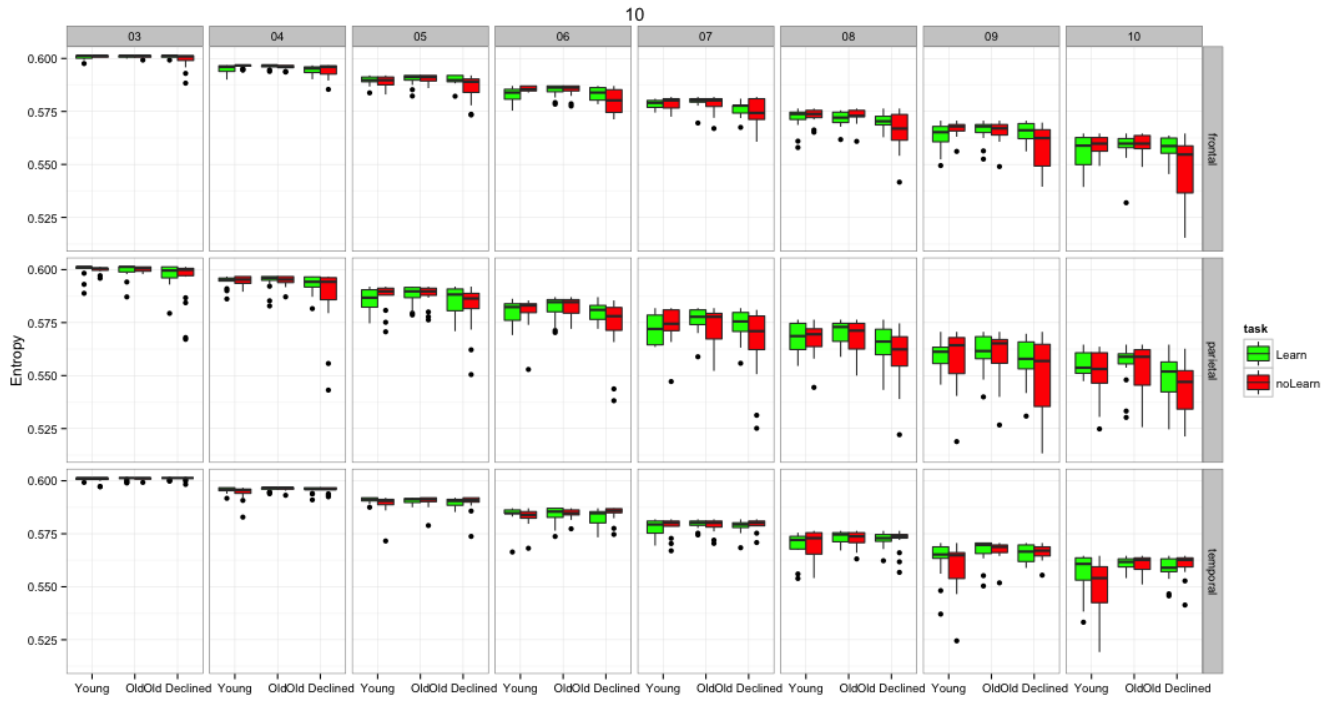


Figure 8: PermEN as a function of the delay for Dimension 10